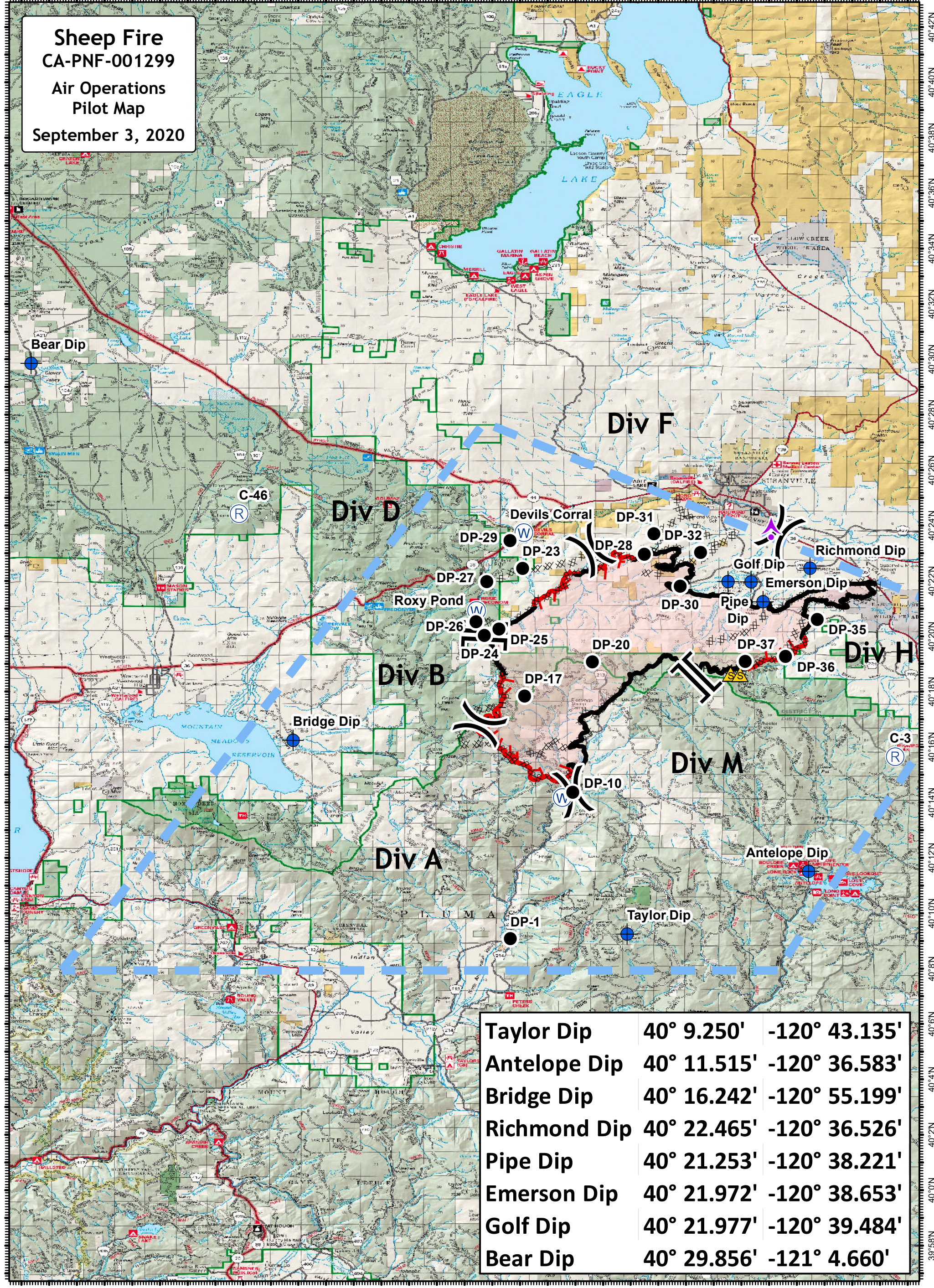


**Sheep Fire
CA-PNF-001299**
**Air Operations
Pilot Map**
September 3, 2020



Taylor Dip	40° 9.250'	-120° 43.135'
Antelope Dip	40° 11.515'	-120° 36.583'
Bridge Dip	40° 16.242'	-120° 55.199'
Richmond Dip	40° 22.465'	-120° 36.526'
Pipe Dip	40° 21.253'	-120° 38.221'
Emerson Dip	40° 21.972'	-120° 38.653'
Golf Dip	40° 21.977'	-120° 39.484'
Bear Dip	40° 29.856'	-121° 4.660'

Wildfire Daily Fire Perimeter	Drop Point	Division Break	Contained Line	R - R - Road as Completed Line
Aerial Hazard	Repeater	Branch Break	Completed Dozer Line	Temporary Flight Restriction
Dip Site	Safety Zone	Uncontrolled Fire Edge	H - H - Completed Hand Line	
Water Source				

Erin Kim Deniz
Production 20200902/2200
WGS84 Lat/Long Grid

California Interagency
Incident Management Team

0 1/2 Miles