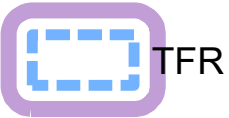
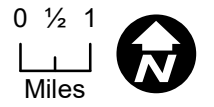


# Sheep Fire CA-PNF-001299

## Air Operations Pilot Map

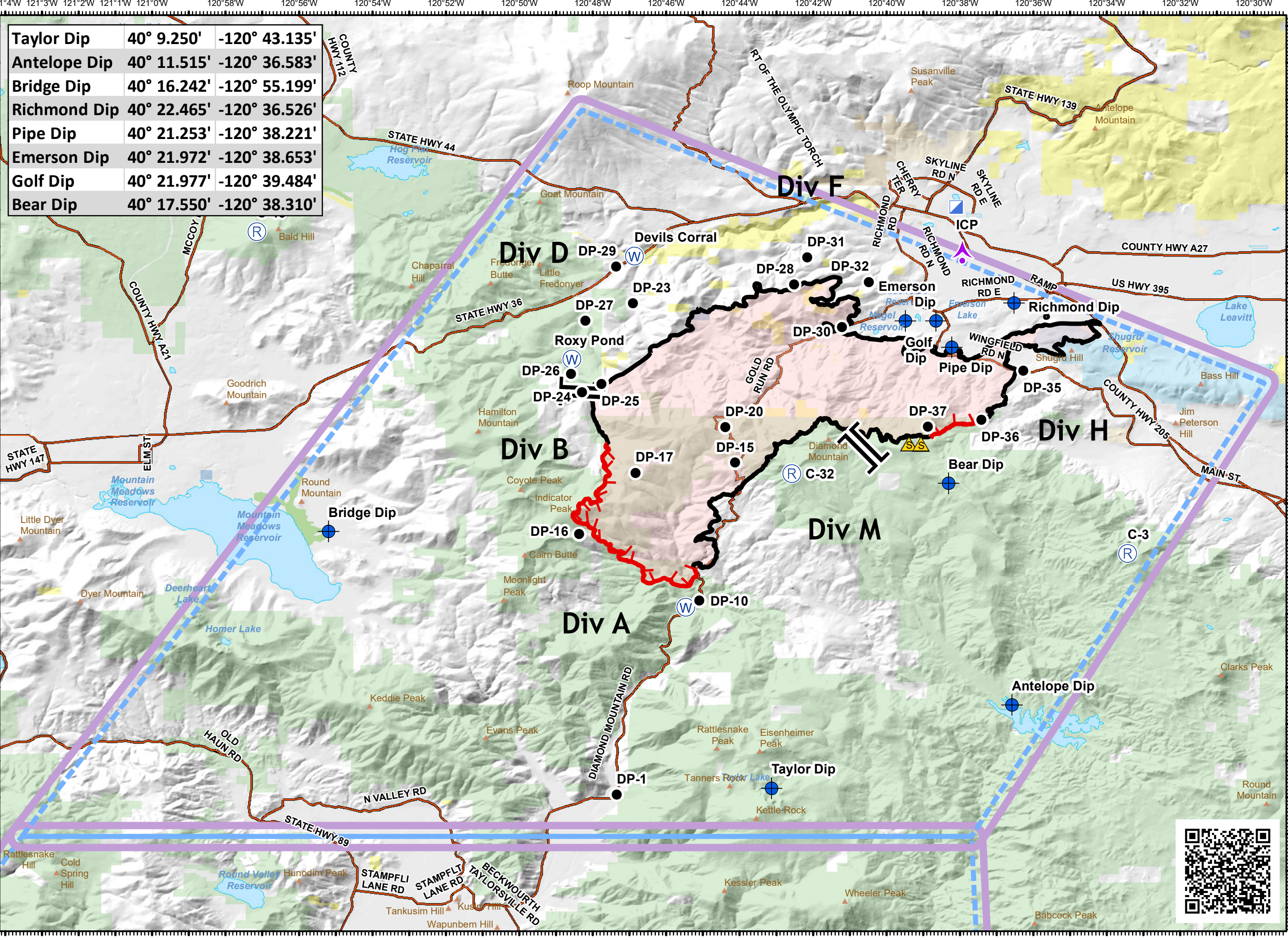
September 6, 2020

29,570 ac



- Aerial Hazard
- Dip Site
- Drop Point
- Incident Command Post
- Repeater
- Safety Zone
- Water Source
- Branch Break

- Uncontrolled Fire Edge
  - Contained Line
  - Wildfire Daily Fire Perimeter
  - RoadMajor250K\_WestUSA
  - Mountain Peak
- Ownership**
- Representation: ownership
- Local Government
  - Non-Profit Conservancies and Trusts
  - CA Dept. of Fish and Wildlife
  - Other State Lands
  - USDA Forest Service
  - Bureau of Land Management
  - Bureau of Indian Affairs
  - Other Federal Lands



Taylor Dip	40° 9.250'	-120° 43.135'
Antelope Dip	40° 11.515'	-120° 36.583'
Bridge Dip	40° 16.242'	-120° 55.199'
Richmond Dip	40° 22.465'	-120° 36.526'
Pipe Dip	40° 21.253'	-120° 38.221'
Emerson Dip	40° 21.972'	-120° 38.653'
Golf Dip	40° 21.977'	-120° 39.484'
Bear Dip	40° 17.550'	-120° 38.310'

