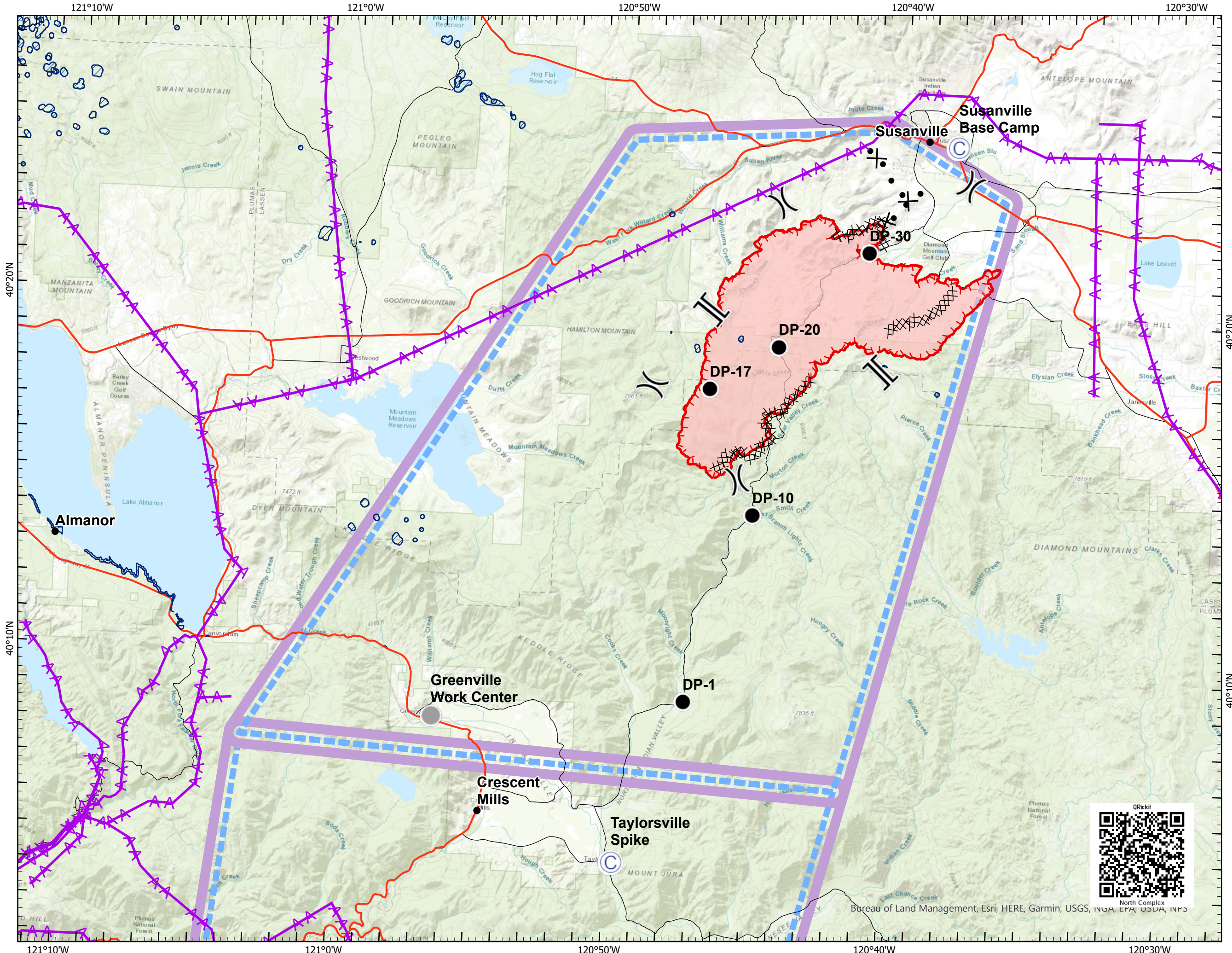


Pilot Map

Sheep Fire
CA-PNF-001299
8/24/2020

- Camp
- Drop Point
- Other
- Division Break
- Branch Break
- Uncontrolled Fire Edge
- Completed Dozer Line
- Proposed Dozer Line
- Transmission Lines
- Wildfire Daily Fire Perimeter
- TFR



IncidentName	FeatureCategory	Label	Lat	Long
Bear	Drop Point	DP-80	39° 56.554' N	121° 1.080' W
Bear	Drop Point	DP-83	39° 55.490' N	121° 4.136' W
Bear	Drop Point	DP-86	39° 52.716' N	121° 6.514' W
Bear	Drop Point	DP-88	39° 50.579' N	121° 7.071' W
Claremont	Camp	Taylorsville Spike	40° 4.510' N	120° 49.715' W
Claremont	Dip Site	East Quincy Dip	39° 55.520' N	120° 52.720' W
Claremont	Dip Site	Greenhorn Creek Dip	39° 57.485' N	120° 53.595' W
Claremont	Dip Site	McMorrow Pond Dip	39° 56.827' N	120° 59.485' W
Claremont	Dip Site	River/Nelson Dip	39° 51.670' N	120° 51.270' W
Claremont	Dip Site	Sawmill Pond Dip	39° 56.532' N	120° 54.425' W
Claremont	Dip Site	Z Dip	39° 51.560' N	120° 51.040' W
Claremont	Drop Point	DP-37	39° 52.679' N	120° 56.463' W
Claremont	Drop Point	DP-40	39° 53.072' N	120° 54.874' W
Claremont	Drop Point	DP-44	39° 55.603' N	120° 52.972' W
Claremont	Drop Point	DP-45	39° 56.231' N	120° 51.730' W
Claremont	Drop Point	DP-50	39° 52.457' N	120° 51.812' W
Claremont	Drop Point	DP-51	39° 51.616' N	120° 50.999' W
Claremont	Drop Point	DP-55	39° 53.503' N	120° 47.086' W
Claremont	Incident Command Post	North Complex ICP	39° 56.346' N	120° 54.903' W
Claremont	Water Source		39° 56.150' N	120° 51.972' W
Sheep	Camp	Susanville Base Camp	40° 24.836' N	120° 38.101' W
Sheep	Drop Point	DP-1	40° 9.075' N	120° 47.345' W
Sheep	Drop Point	DP-10	40° 14.356' N	120° 45.095' W
Sheep	Drop Point	DP-17	40° 17.835' N	120° 46.833' W
Sheep	Drop Point	DP-20	40° 19.084' N	120° 44.387' W
Sheep	Drop Point	DP-30	40° 21.801' N	120° 41.216' W