



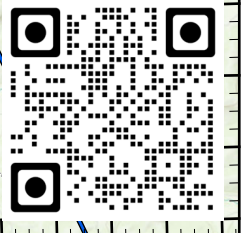
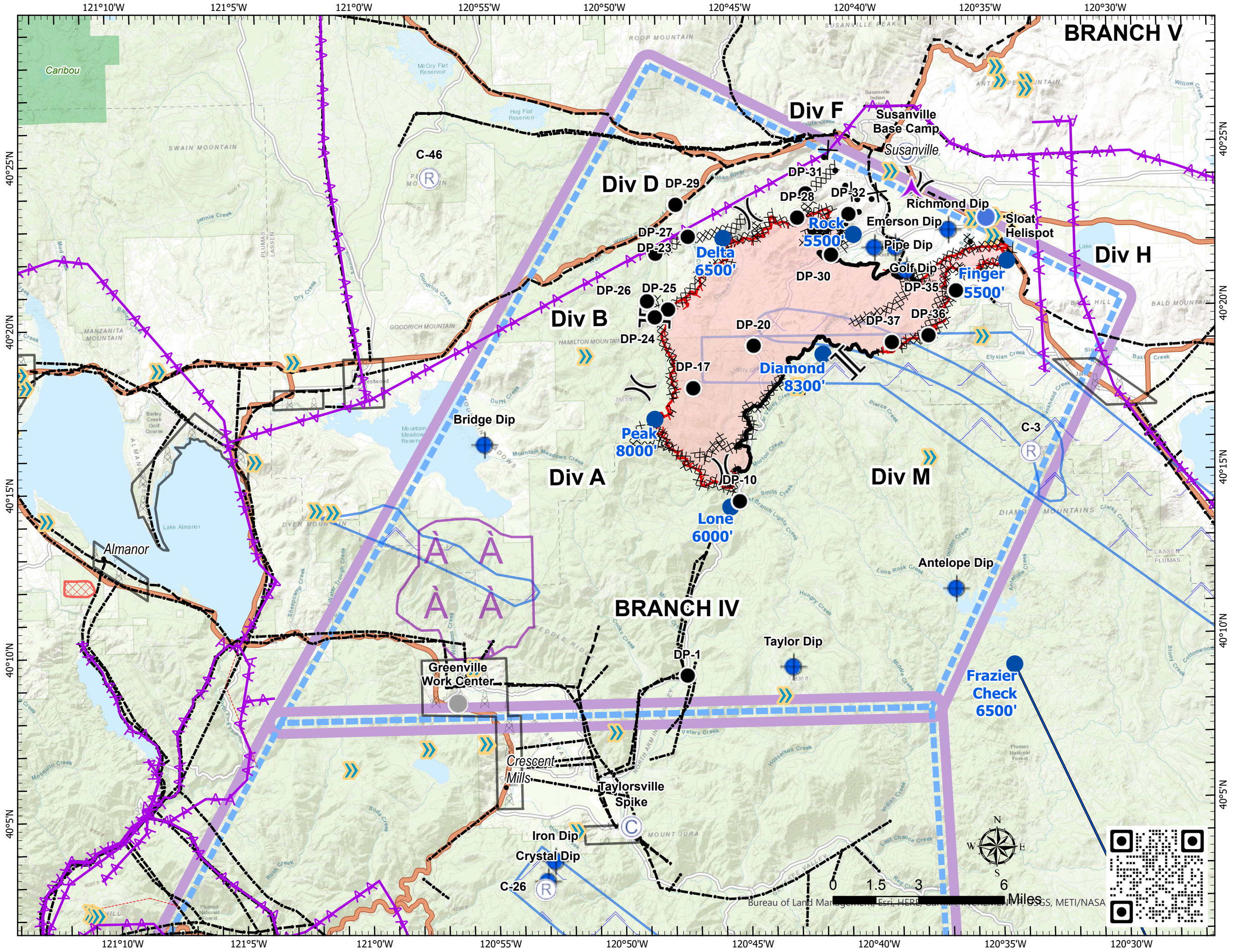
Pilot Map

Sheep Fire

CA-PNF-001299

8/29/2020

-  Aerial Hazard
-  Camp
-  Dip Site
-  Drop Point
-  Helispot
-  Repeater
-  Other
-  Division Break
-  Branch Break
-  Check Point
-  Airport
-  Congested area
-  Tower
-  Uncontrolled Fire Edge
-  Contained Line
-  Completed Dozer Line
-  Completed Hand Line
-  Road as Completed Line
-  Proposed Dozer Line
-  Powerline
-  Telephone wires
-  Aerial Hazard
-  Aerobatic
- Congested area
- Hangglide/Paraglide
- Jettison
- MOA
- No Dipping
- No Fly Zone
- Powerline
- Turbulence
- Wildfire Daily Fire Perimeter
- Wilderness
- HelicopterRoutes_North
- TFR



IncidentName	Label	Lat WGS84_DDM	Long WGS84_DDM
Bear	DP-88	+39° 50.57897694'	-121° 07.07084898'
Bear	DP-86	+39° 52.71620430'	-121° 06.51414300'
Bear	DP-83	+39° 55.48950858'	-121° 04.13551566'
Bear	DP-80	+39° 56.55415902'	-121° 01.07964162'
Bear	Fowler Dip	+39° 46.43670042'	-121° 00.31732968'
Bear	Haskins Mobile Retardant Base	+39° 52.12910772'	-121° 10.47001884'
Bear	DP-93	+39° 51.93583134'	-120° 59.97194304'
Bear		+39° 52.75264326'	-121° 05.08871682'
Bear		+39° 51.27701784'	-121° 03.73986312'
Bear	DP-94	+39° 51.36168660'	-121° 00.65315418'
Bear	DP-81	+39° 52.35382254'	-121° 02.73341676'
Bear	DP-82	+39° 52.41994020'	-121° 03.89278494'
Bear	DP-84	+39° 52.75031094'	-121° 05.10090390'
Bear		+39° 51.44907426'	-121° 00.24909150'
Bear		+39° 52.72104762'	-121° 06.52931316'
Bear		+39° 50.07149964'	-121° 11.03028018'
Bear		+39° 47.54387796'	-121° 12.81097596'
Bear	DP-90	+39° 50.07149964'	-121° 11.03028018'
Bear		+39° 52.16536194'	-121° 01.88211186'
Claremont	DP-40	+39° 53.07212124'	-120° 54.87357408'
Claremont		+39° 53.13932430'	-120° 56.60709072'
Claremont		+39° 56.13773736'	-120° 53.11481364'
Claremont		+39° 50.89927290'	-120° 55.50844710'
Claremont		+39° 51.93964674'	-120° 43.80984834'
Claremont	Cell Service	+39° 51.01734420'	-120° 52.08403332'
Claremont	DP-50	+39° 52.45701702'	-120° 51.81195714'
Claremont		+39° 54.73758942'	-120° 48.40429572'
Claremont	DP-45	+39° 56.23059102'	-120° 51.72971802'
Claremont	DP-55	+39° 53.50315596'	-120° 47.08615194'
Claremont	North Complex ICP	+39° 56.34543456'	-120° 54.90268752'
Claremont	DP-44	+39° 55.60324944'	-120° 52.97197494'
Claremont	Taylorville Spike	+40° 04.51038666'	-120° 49.71536076'
Claremont	Greenville Work Center	+40° 08.38330872'	-120° 56.48821428'
Claremont	DP-51	+39° 51.61604202'	-120° 50.99886258'
Claremont		+39° 56.14982676'	-120° 51.97195332'
Claremont	East Quincy Dip	+39° 55.51999998'	-120° 52.72000002'
Claremont	River/Nelson Dip	+39° 51.67000002'	-120° 51.27000000'
Claremont	Z Dip	+39° 51.55999998'	-120° 51.04000002'
Claremont	McMorrow Pond Dip	+39° 56.82690000'	-120° 59.48500002'
Claremont	Greenhorn Creek Dip	+39° 57.48499998'	-120° 53.59500000'
Claremont	Sawmill Pond Dip	+39° 56.53240038'	-120° 54.42494346'
Claremont	DP-37	+39° 52.67875176'	-120° 56.46316164'
Claremont	Williams Dip	+39° 54.66199998'	-120° 48.71299998'
Claremont	Crystal Dip	+40° 02.88317148'	-120° 53.08056894'
Claremont	DP-46	+39° 55.40343384'	-120° 50.05323222'
Claremont	DP-56	+39° 54.35247402'	-120° 44.74758642'
Claremont		+39° 51.91828242'	-120° 43.69937910'
Claremont		+39° 51.89379006'	-120° 43.55402046'
Claremont	DP-57	+39° 52.70542416'	-120° 45.63363954'
Claremont	DP-58	+39° 52.42412916'	-120° 44.40381588'
Claremont	DP-59	+39° 52.53342738'	-120° 43.76998500'
Claremont	DP-62	+39° 51.46015860'	-120° 41.32024902'
Claremont		+39° 54.85914924'	-120° 48.41748624'
Claremont		+39° 54.90075306'	-120° 48.50649444'
Claremont	DP-61	+39° 51.56900892'	-120° 43.66672578'
Claremont	C-10	+39° 52.99864716'	-120° 56.75246190'
Claremont	C47	+39° 43.07597850'	-121° 11.89662960'
Claremont	C-26	+40° 02.65648158'	-120° 53.16962934'
Claremont	Poplar Dip	+39° 50.25300498'	-120° 44.95700136'
Claremont		+39° 50.99400546'	-120° 50.21405508'
Claremont	H-2 Bray	+39° 50.99157516'	-120° 50.13047976'
Claremont	DP-35	+39° 53.21050230'	-120° 57.45293634'
Iron	Iron Dip	+40° 03.49999998'	-120° 52.77000000'
Sheep	DP-10	+40° 14.35632222'	-120° 45.09458718'
Sheep	DP-20	+40° 19.08388896'	-120° 44.38706316'
Sheep		+40° 15.32449974'	-120° 45.68103300'
Sheep	DP-1	+40° 09.07473348'	-120° 47.34465318'
Sheep		+40° 20.02780920'	-120° 48.28627236'
Sheep		+40° 18.51068346'	-120° 40.63170564'
Sheep		+40° 23.75784186'	-120° 37.61472804'
Sheep	DP-30	+40° 21.80043894'	-120° 41.21556330'
Sheep		+40° 17.90601210'	-120° 48.90866694'
Sheep		+40° 23.11162392'	-120° 44.43506934'
Sheep	Susanville Base Camp	+40° 24.83553756'	-120° 38.10094002'
Sheep	DP-17	+40° 17.83494540'	-120° 46.83336690'
Sheep	Taylor Dip	+40° 09.25024026'	-120° 43.13506302'
Sheep	Antelope Dip	+40° 11.51531700'	-120° 36.58279458'
Sheep	Bridge Dip	+40° 16.24231584'	-120° 55.19879820'
Sheep	Richmond Dip	+40° 22.46531790'	-120° 36.52579608'
Sheep	Pipe Dip	+40° 21.25331766'	-120° 38.22079620'
Sheep	Emerson Dip	+40° 21.97231764'	-120° 38.65279638'
Sheep	Golf Dip	+40° 21.97731762'	-120° 39.48379650'
Sheep	DP-25	+40° 20.25514218'	-120° 47.76357198'
Sheep	DP-26	+40° 20.52705684'	-120° 48.59106882'
Sheep	DP-27	+40° 21.97180062'	-120° 48.20301792'
Sheep	DP-24	+40° 20.02780920'	-120° 48.28627236'
Sheep	C-46	+40° 24.42831636'	-120° 57.15113298'
Sheep	C-3	+40° 15.65181756'	-120° 33.45246132'
Sheep		+40° 23.69331786'	-120° 37.93279644'
Sheep	Sloat Helispot	+40° 22.82800542'	-120° 34.98334698'
Sheep	Gravel Mobile Retardant Base	+39° 51.37231476'	-120° 43.36279290'
Sheep	DP-29	+40° 23.44831710'	-120° 47.36079798'
Sheep	DP-23	+40° 22.45531704'	-120° 46.90779774'
Sheep	DP-28	+40° 22.95531744'	-120° 42.51279708'
Sheep	DP-31	+40° 23.69961750'	-120° 42.15949716'
Sheep	DP-32	+40° 23.03131758'	-120° 40.47879678'
Sheep	DP-35	+40° 20.61231774'	-120° 36.26879580'
Sheep	DP-36	+40° 19.27331754'	-120° 37.41279576'
Sheep	DP-37	+40° 19.08731742'	-120° 38.87079600'