

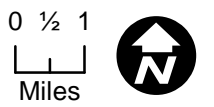
# Sheep Fire

CA-PNF-001299

Air Operations Pilot Map

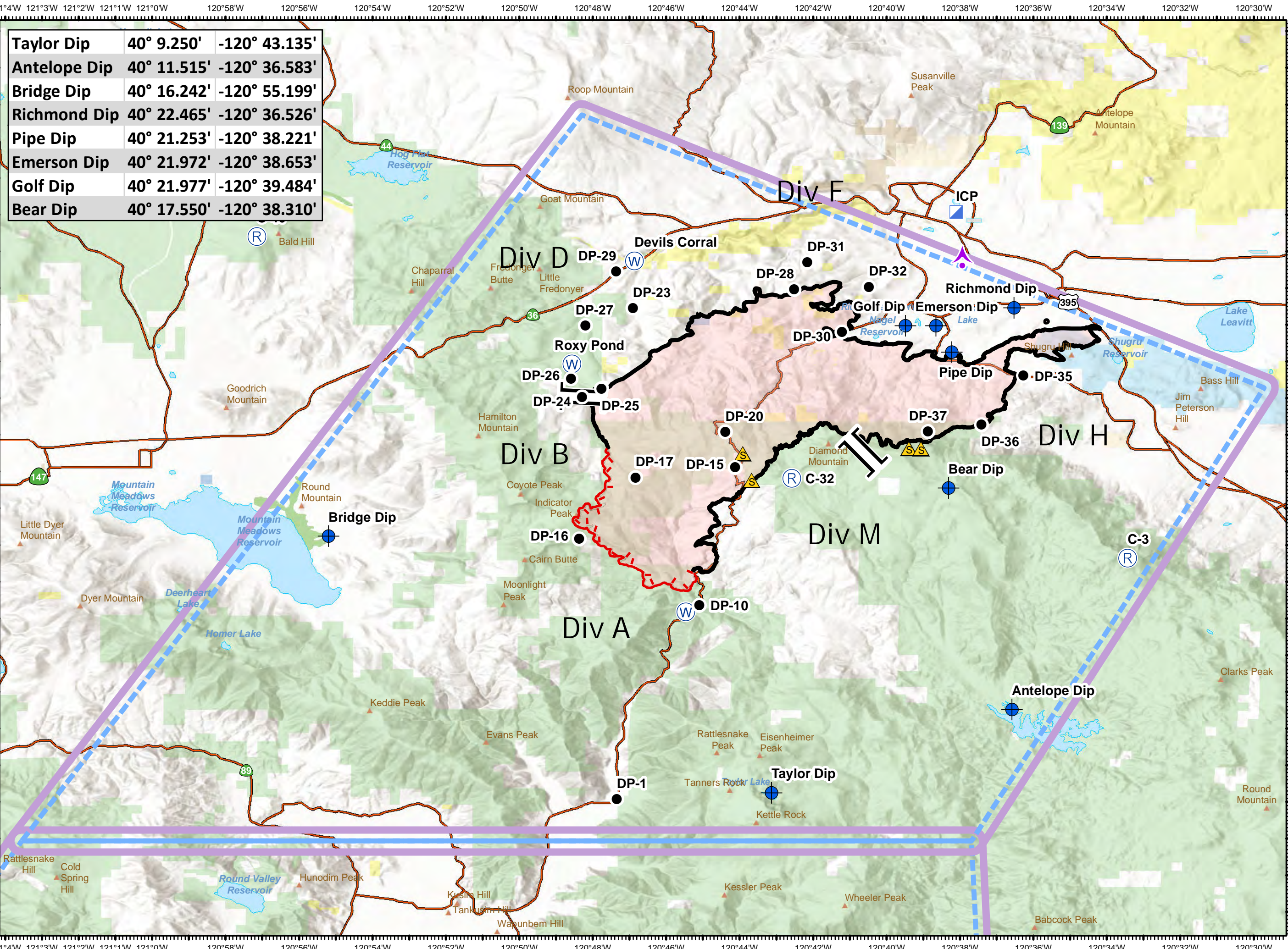
September 7, 2020

29,570 ac



- Aerial Hazard
- Dip Site
- Drop Point
- Incident Command Post
- Repeater
- Safety Zone
- Water Source
- Branch Break

- Uncontrolled Fire Edge
  - Contained Line
  - Major Roads
  - Wildfire Daily Fire Perimeter
  - Mountain Peak
- Ownership**
- Representation: ownership
- Local Government
  - Non-Profit Conservancies and Trusts
  - CA Dept. of Fish and Wildlife
  - Other State Lands
  - USDA Forest Service
  - Bureau of Land Management
  - Bureau of Indian Affairs
  - Other Federal Lands



<b>Taylor Dip</b>	<b>40° 9.250'</b>	<b>-120° 43.135'</b>
<b>Antelope Dip</b>	<b>40° 11.515'</b>	<b>-120° 36.583'</b>
<b>Bridge Dip</b>	<b>40° 16.242'</b>	<b>-120° 55.199'</b>
<b>Richmond Dip</b>	<b>40° 22.465'</b>	<b>-120° 36.526'</b>
<b>Pipe Dip</b>	<b>40° 21.253'</b>	<b>-120° 38.221'</b>
<b>Emerson Dip</b>	<b>40° 21.972'</b>	<b>-120° 38.653'</b>
<b>Golf Dip</b>	<b>40° 21.977'</b>	<b>-120° 39.484'</b>
<b>Bear Dip</b>	<b>40° 17.550'</b>	<b>-120° 38.310'</b>

