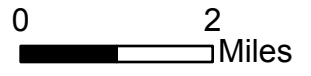
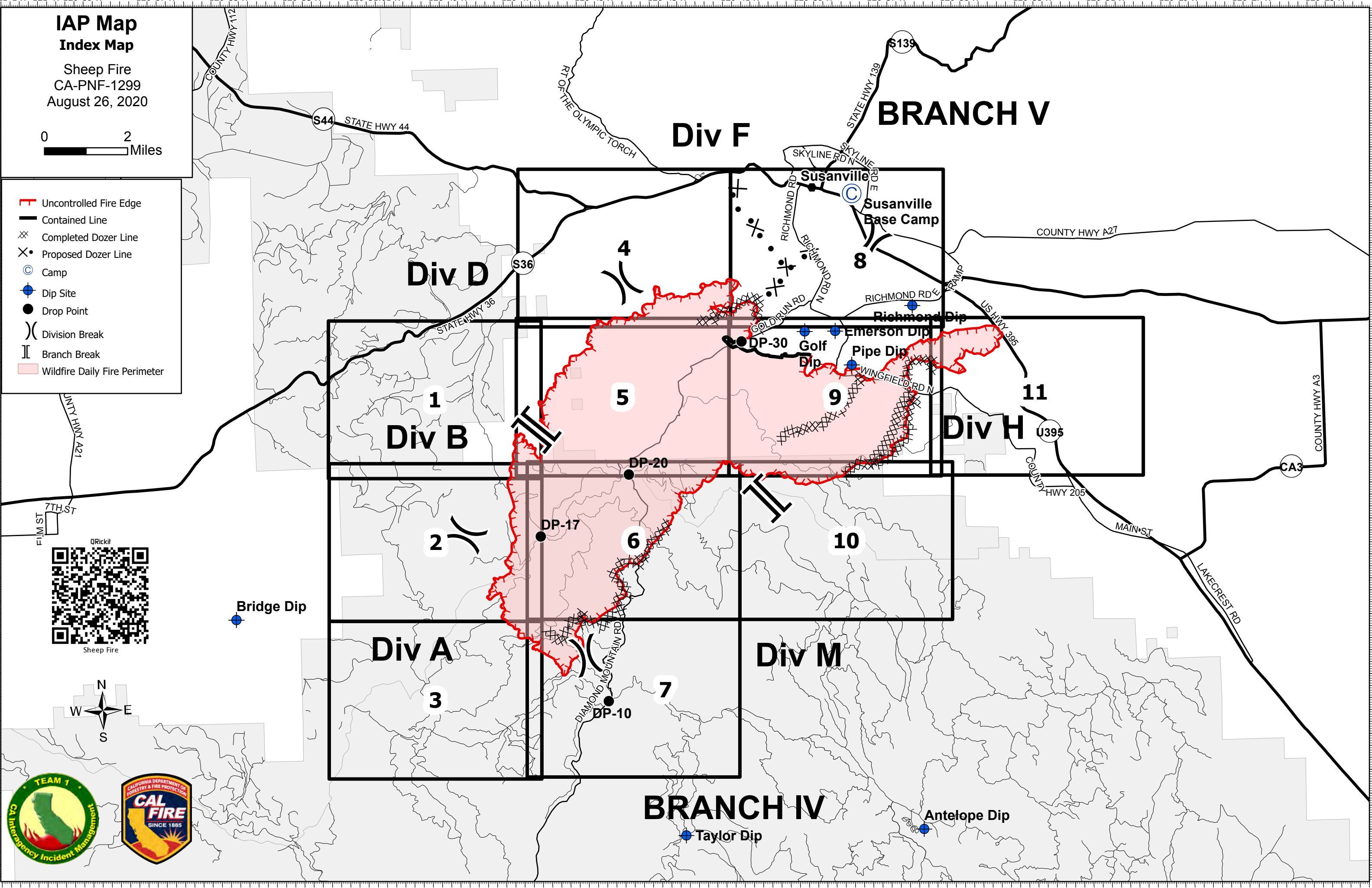


IAP Map Index Map

Sheep Fire
CA-PNF-1299
August 26, 2020



- Uncontrolled Fire Edge
- Contained Line
- Completed Dozer Line
- Proposed Dozer Line
- Camp
- Dip Site
- Drop Point
- Division Break
- Branch Break
- Wildfire Daily Fire Perimeter



40°28'N
40°27'N
40°26'N
40°25'N
40°23.99'N
40°23'N
40°22'N
40°21'N
40°20'N
40°19'N
40°18'N
40°17'N
40°16'N
40°15'N
40°14'N
40°13'N
40°12'N
40°11'N

121°1'W
121°W
120°59'W
120°57'W
120°55'W
120°53'W
120°51.01'W
120°49'W
120°47'W
120°45'W
120°43'W
120°41'W
120°39'W
120°37'W
120°35'W
120°33'W
120°31'W
120°29'W
120°27'W
120°25'W

IAP Map

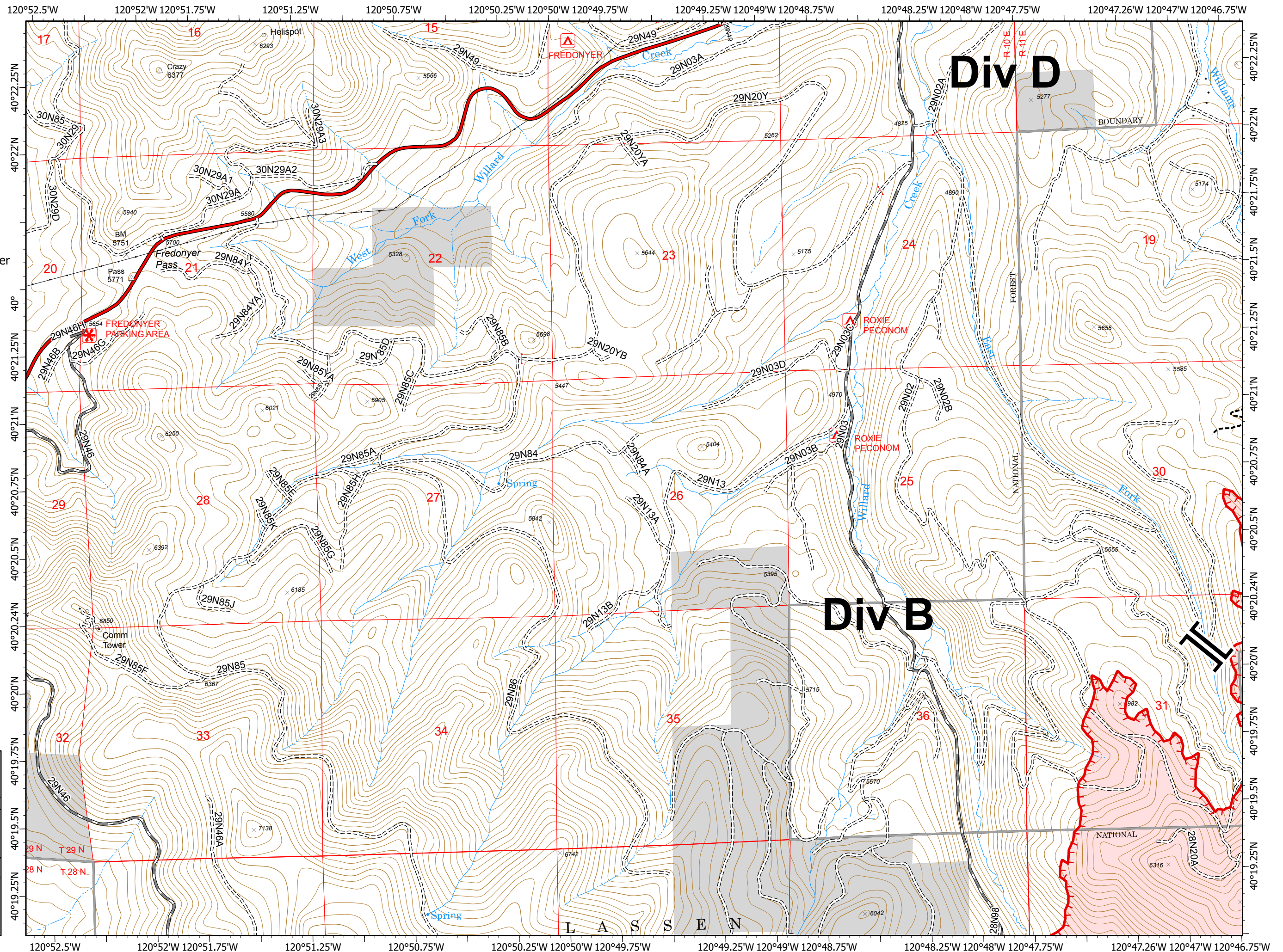
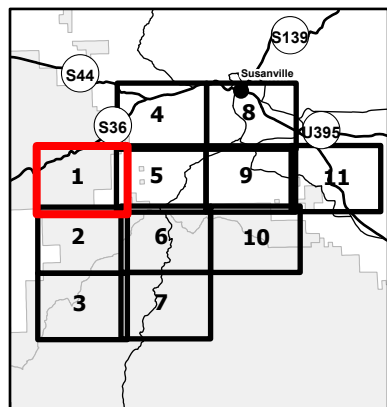
CA-PNF-001299

August 26, 2020

Page Number: 1

0 1000 2000 Feet

- Branch Break
- Uncontrolled Fire Edge
- Wildfire Daily Fire Perimeter
- Non-FS Lands

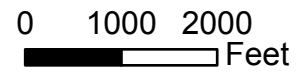


IAP Map

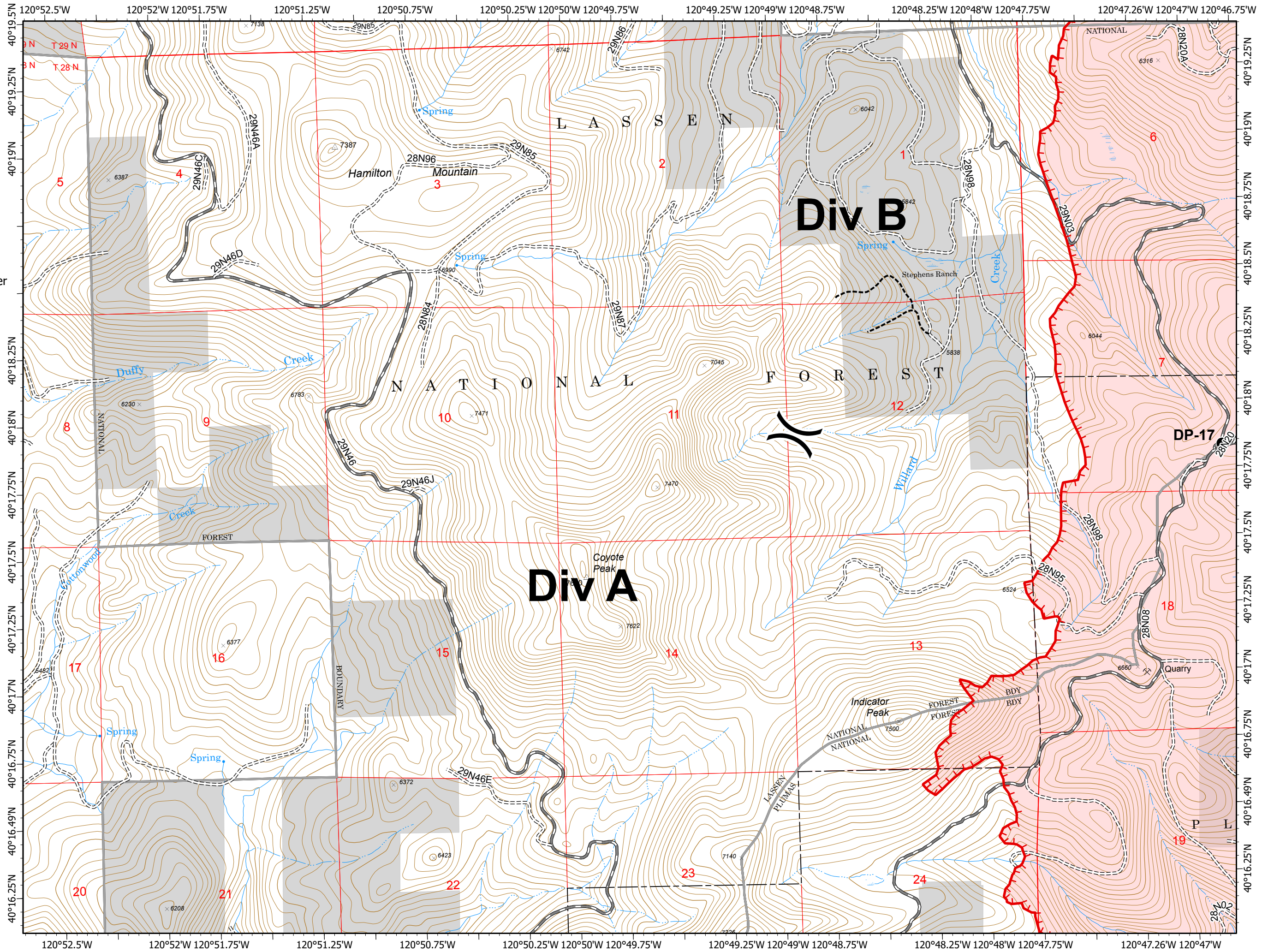
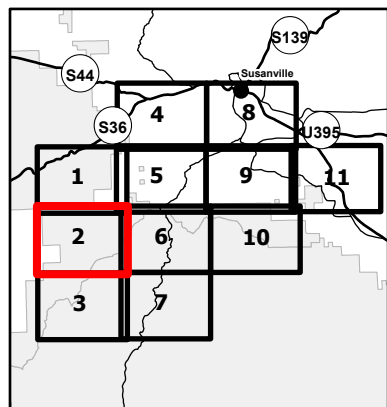
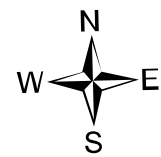
CA-PNF-001299

August 26, 2020

Page Number: 2



- Drop Point
- () Division Break
- ┌─┐ Uncontrolled Fire Edge
- ▭ Wildfire Daily Fire Perimeter
- ▭ Non-FS Lands






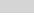
IAP Map

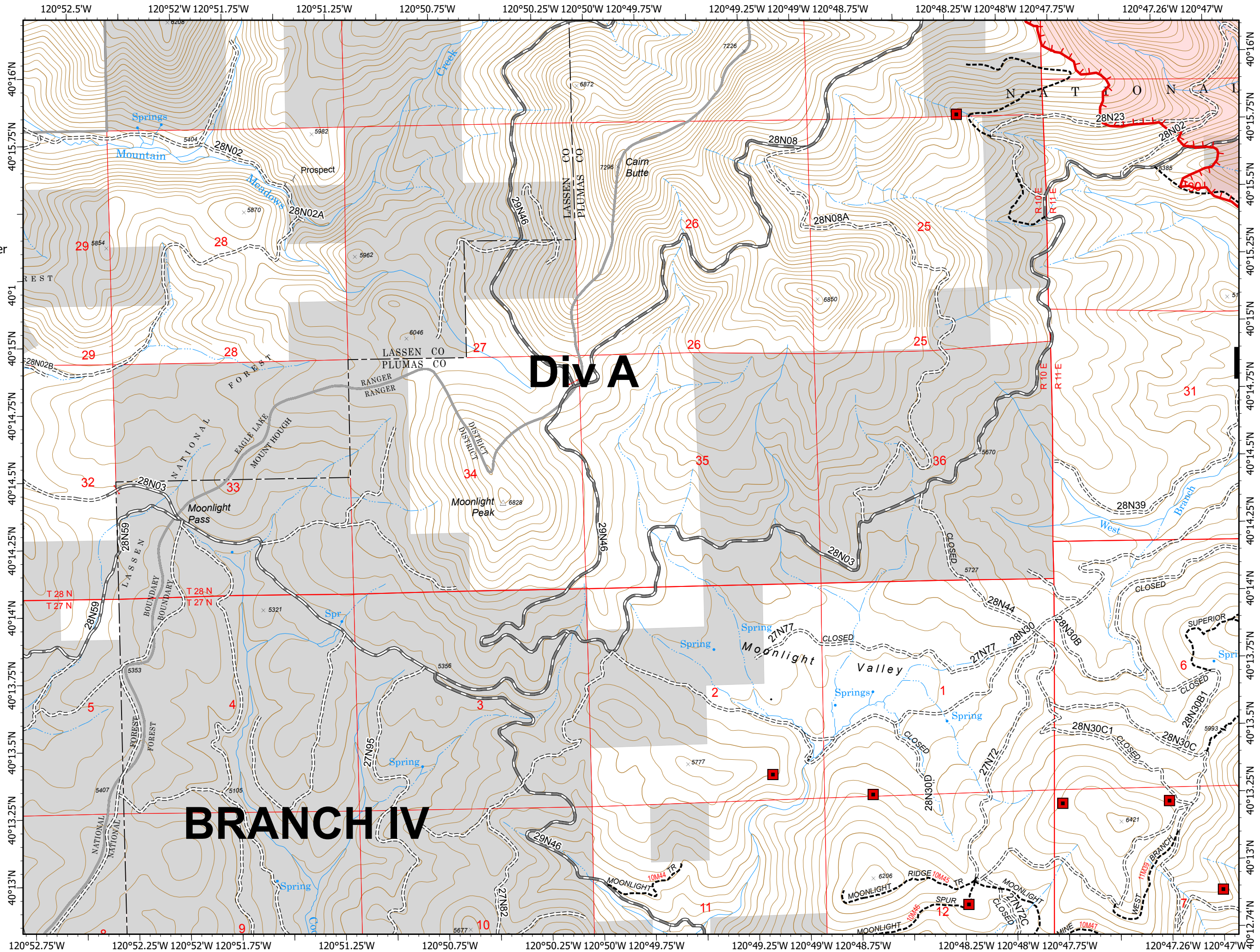
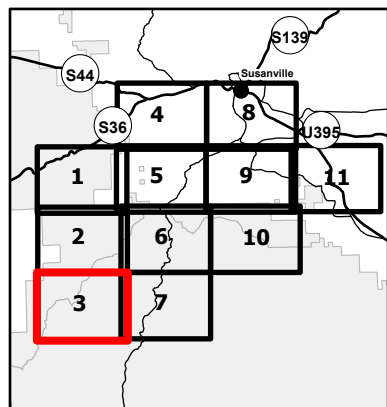
CA-PNF-001299

August 26, 2020

Page Number: 3

0 1000 2000 Feet

-  Mine Hazards
-  Uncontrolled Fire Edge
-  Wildfire Daily Fire Perimeter
-  Non-FS Lands



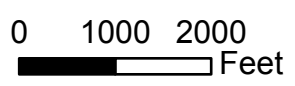
120°47.26'W 120°47'W 120°46.75'W 120°46.25'W 120°46'W 120°45.75'W 120°45.25'W 120°45'W 120°44.75'W 120°44.25'W 120°44'W 120°43.75'W 120°43.25'W 120°43'W 120°42.75'W 120°42.25'W 120°42'W 120°41.75'W

IAP Map

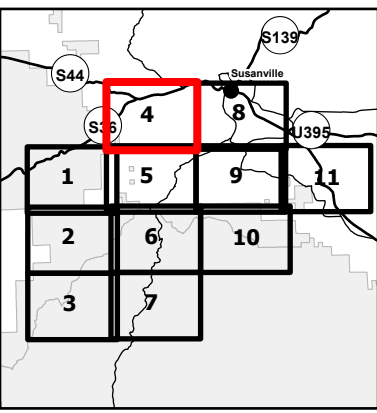
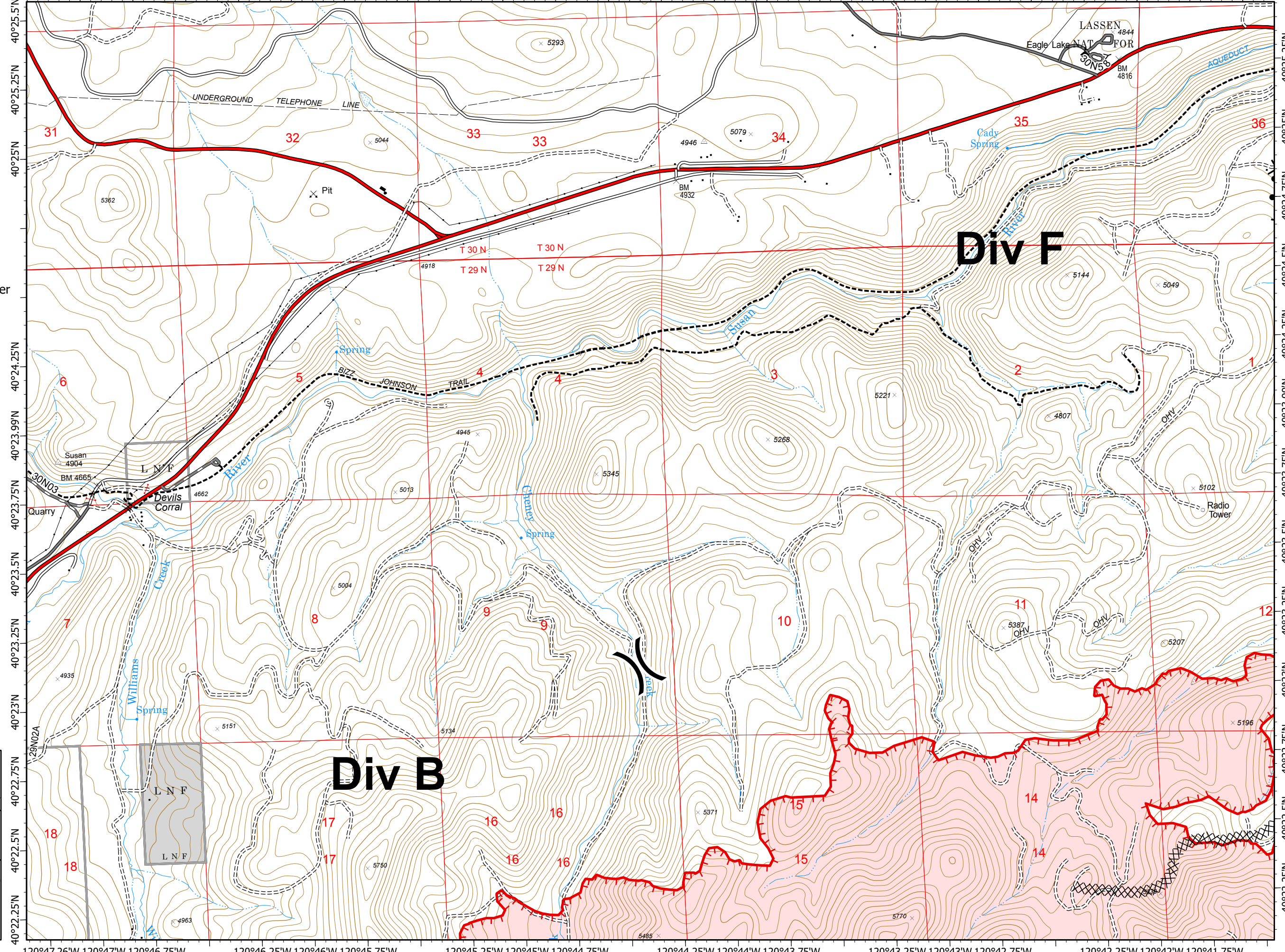
CA-PNF-001299

August 26, 2020

Page Number: 4



- Division Break
- Uncontrolled Fire Edge
- Completed Dozer Line
- Proposed Dozer Line
- Wildfire Daily Fire Perimeter
- Non-FS Lands



120°47.26'W 120°47'W 120°46.75'W 120°46.25'W 120°46'W 120°45.75'W 120°45.25'W 120°45'W 120°44.75'W 120°44.25'W 120°44'W 120°43.75'W 120°43.25'W 120°43'W 120°42.75'W 120°42.25'W 120°42'W 120°41.75'W

IAP Map

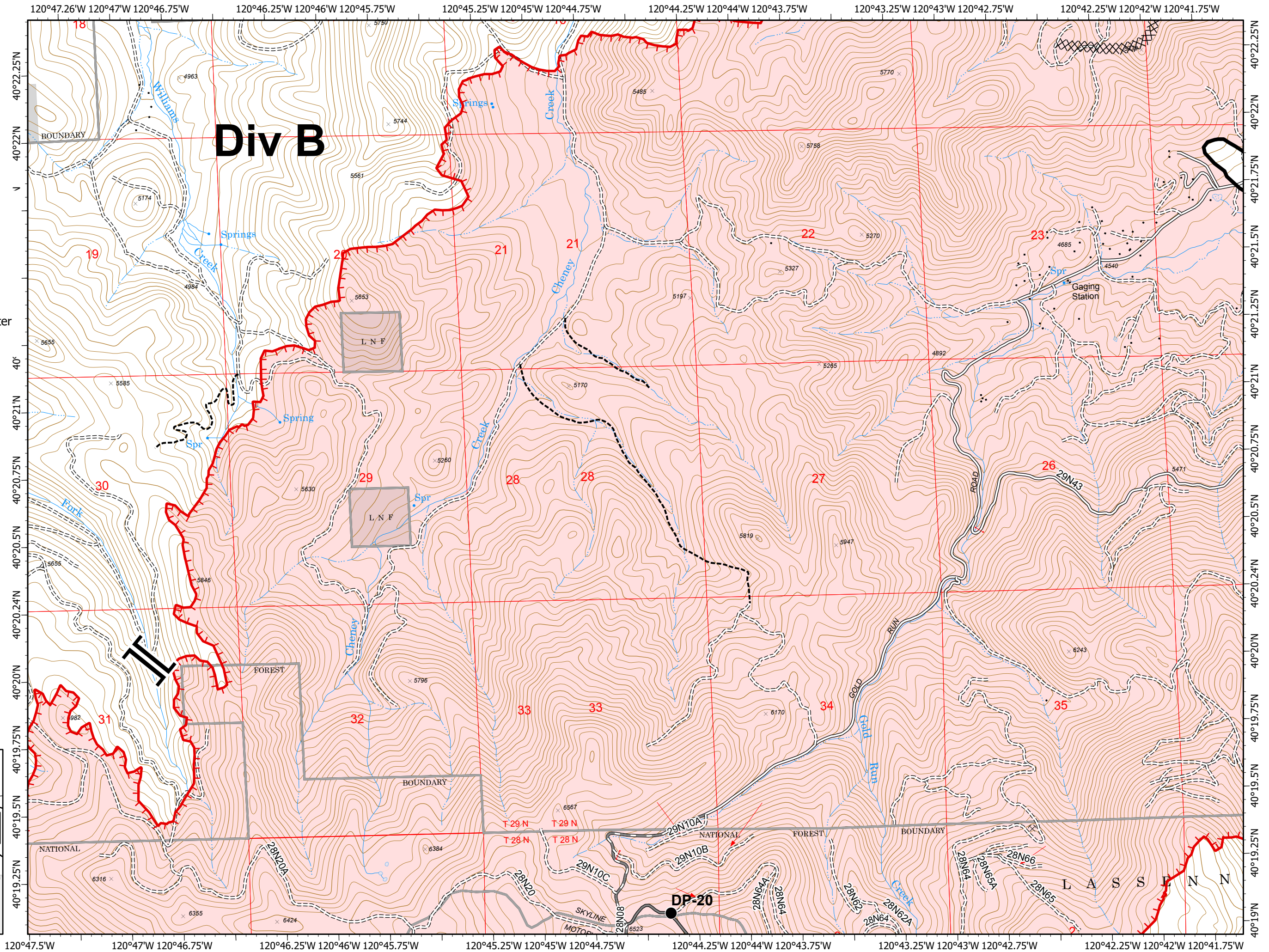
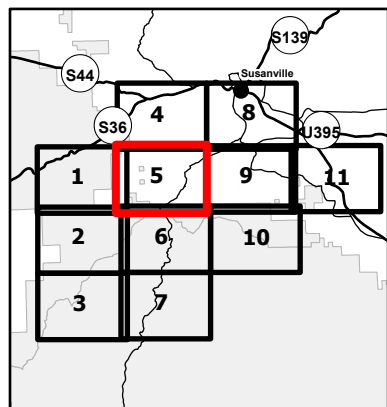
CA-PNF-001299

August 26, 2020

Page Number: 5

0 1000 2000 Feet

- Drop Point
- || Branch Break
- ┌ Uncontrolled Fire Edge
- Contained Line
- ⊗⊗ Completed Dozer Line
- Wildfire Daily Fire Perimeter
- Non-FS Lands



IAP Map

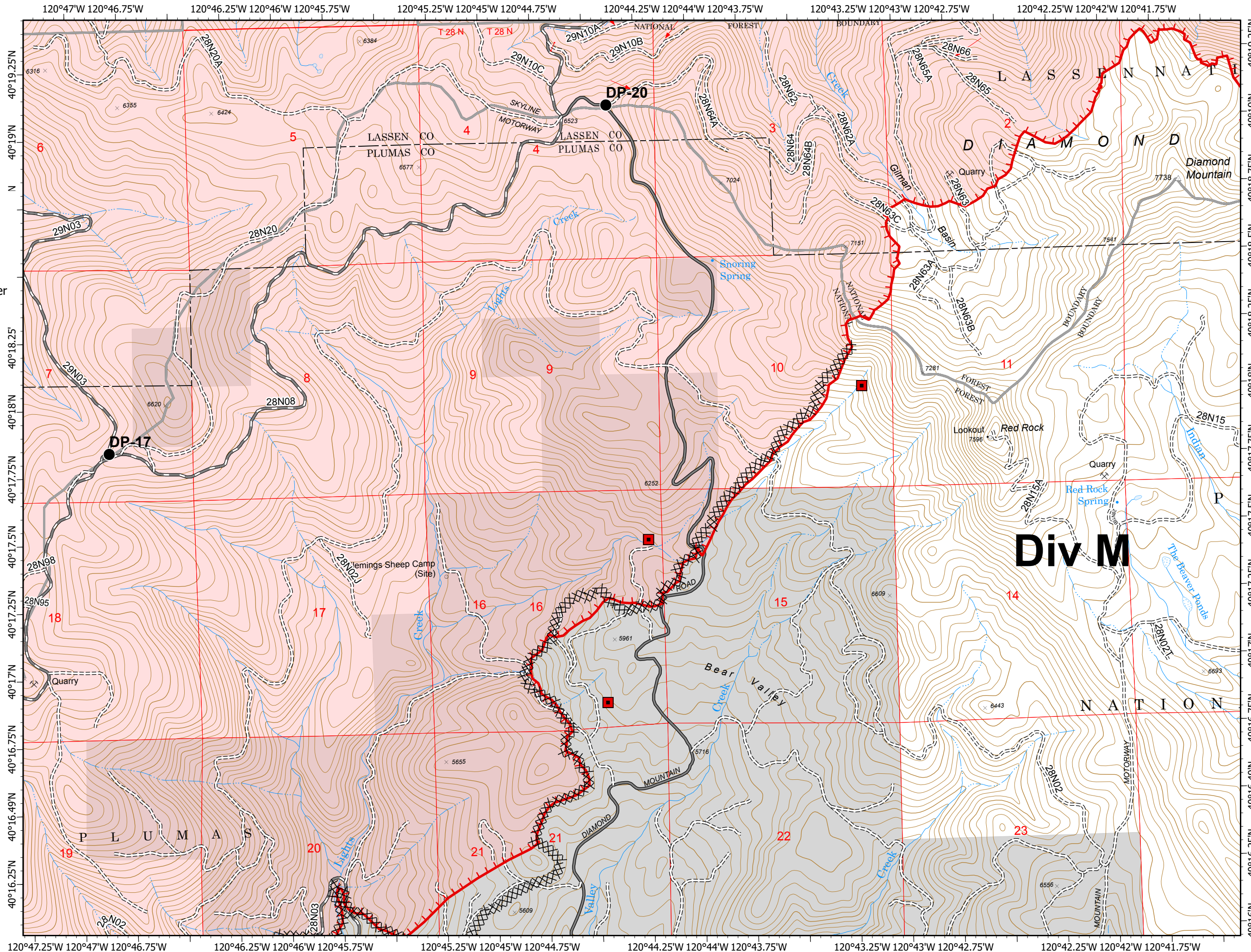
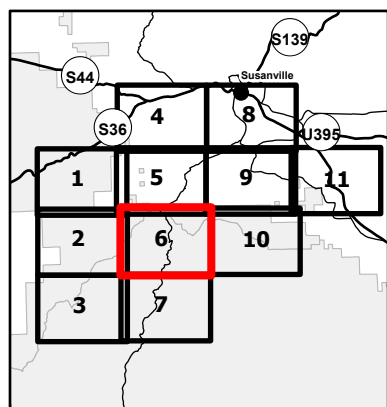
CA-PNF-001299

August 26, 2020

Page Number: 6

0 1000 2000 Feet

- Mine Hazards
- Drop Point
- ┌ Uncontrolled Fire Edge
- ⊗⊗ Completed Dozer Line
- ▭ Wildfire Daily Fire Perimeter
- ▭ Non-FS Lands



IAP Map

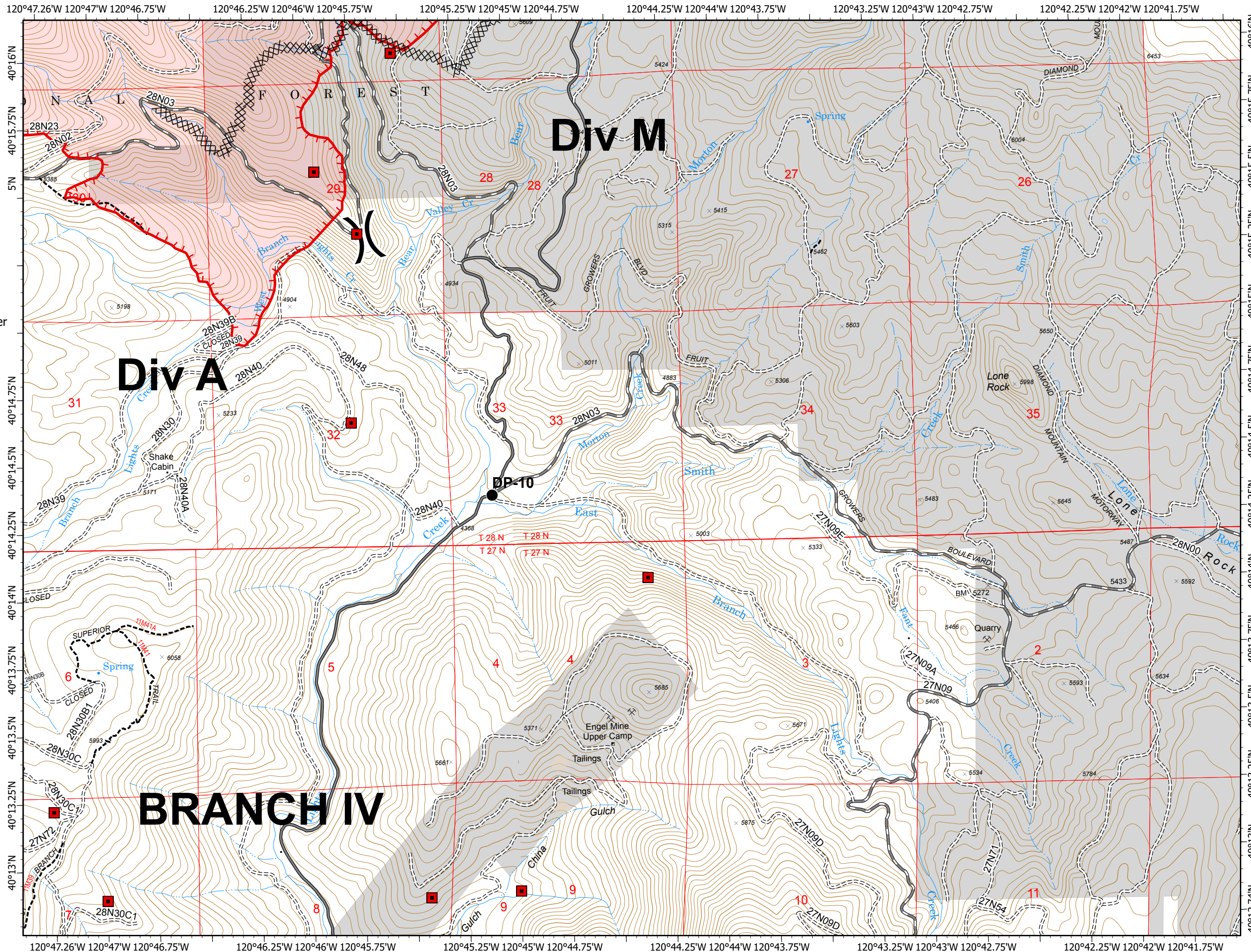
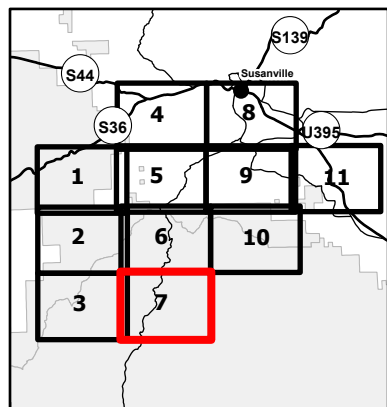
CA-PNF-001299

August 26, 2020

Page Number: 7

0 1000 2000 Feet

- Mine Hazards
- Drop Point
-) Division Break
- ┌ Uncontrolled Fire Edge
- ⊗⊗ Completed Dozer Line
- Wildfire Daily Fire Perimeter
- Non-FS Lands



IAP Map

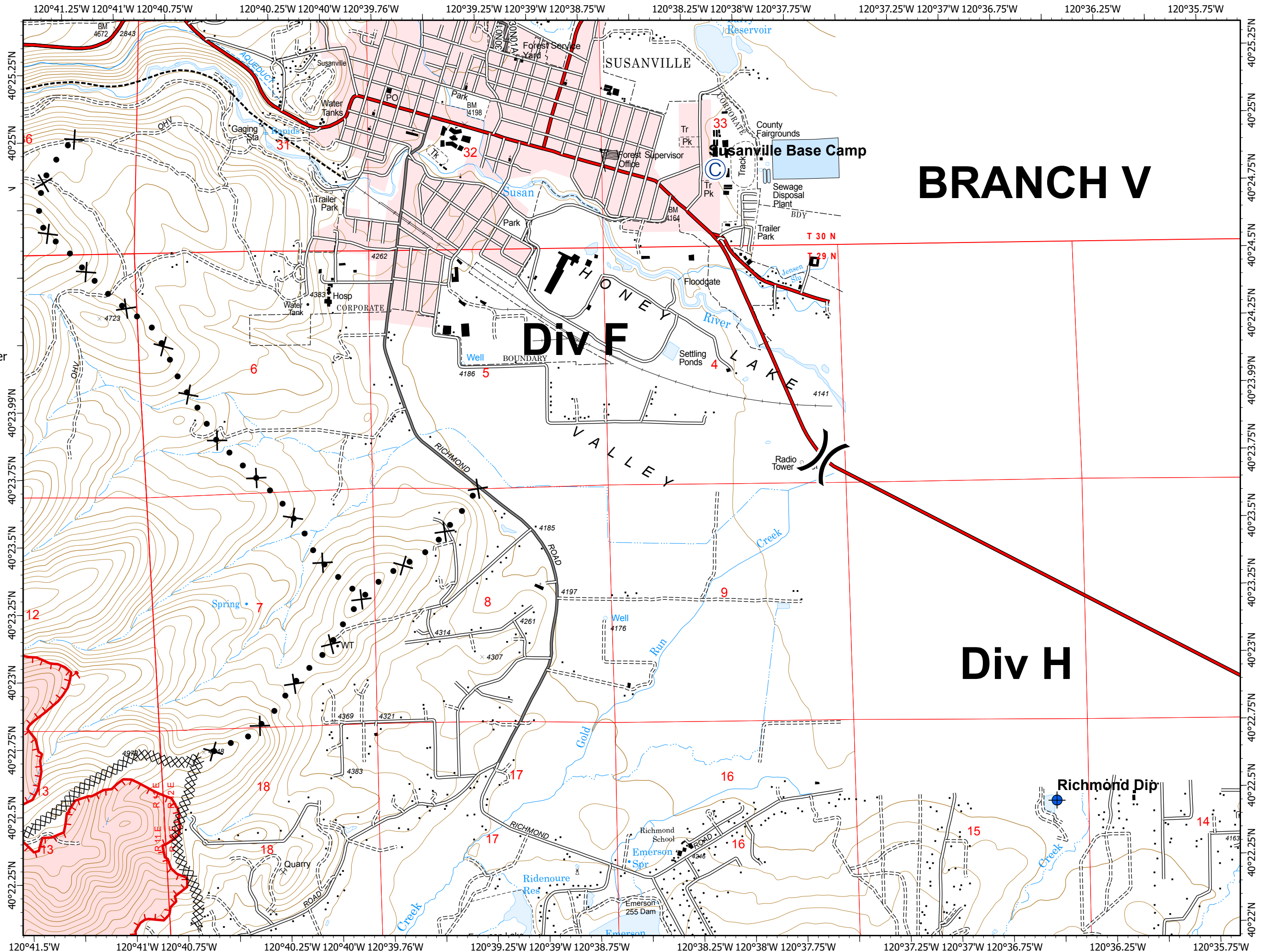
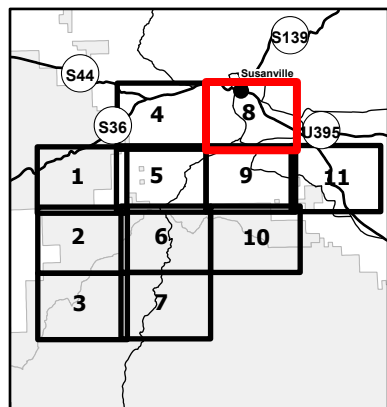
CA-PNF-001299

August 26, 2020

Page Number: 8

0 1000 2000 Feet

- Camp
- Dip Site
- Division Break
- Uncontrolled Fire Edge
- Completed Dozer Line
- Proposed Dozer Line
- Wildfire Daily Fire Perimeter



BRANCH V

Div F

Div H

Richmond Dip








IAP Map

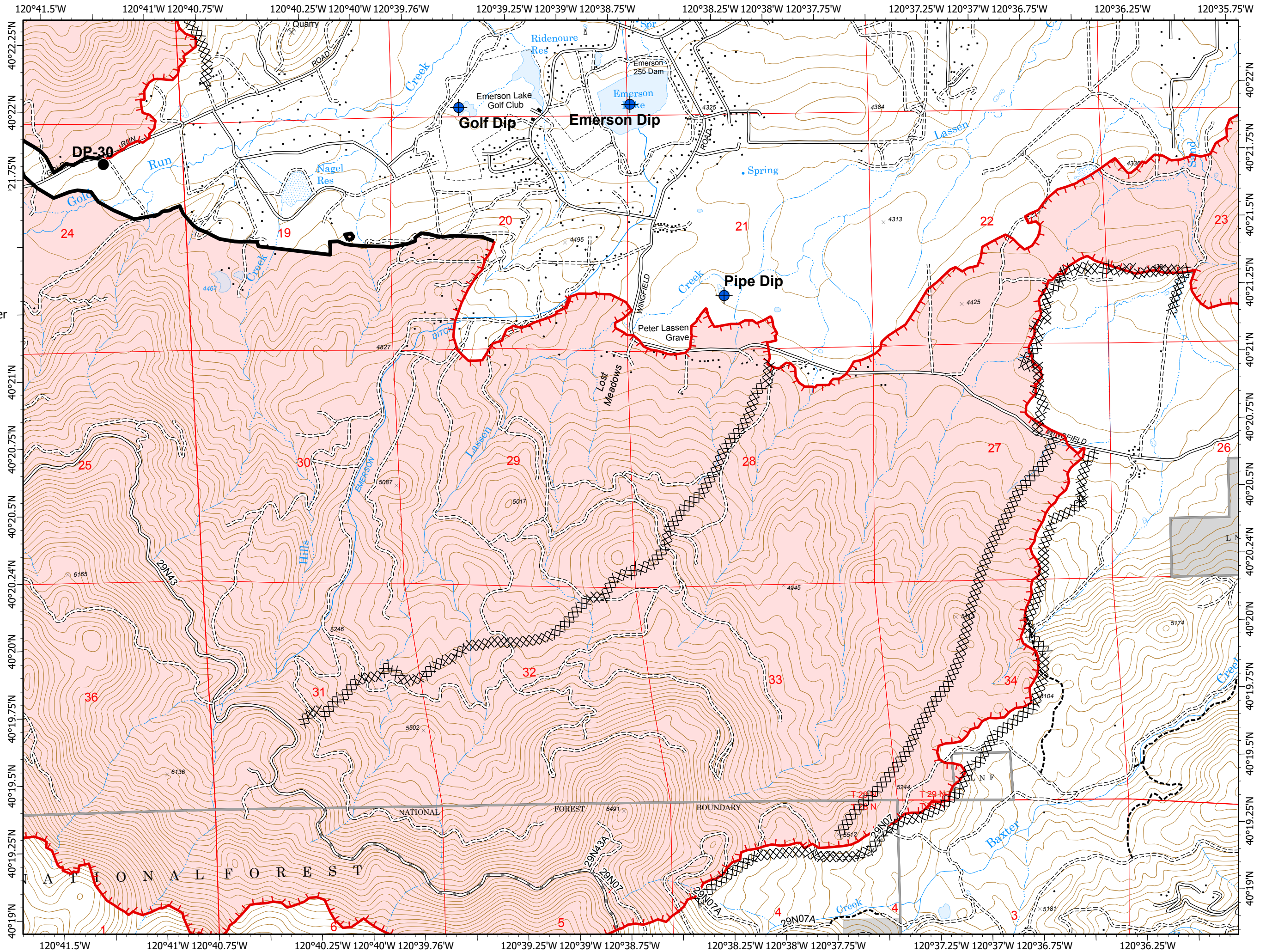
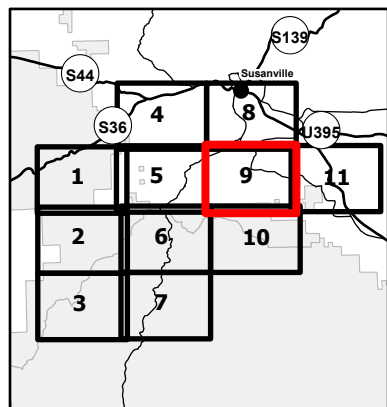
CA-PNF-001299

August 26, 2020

Page Number: 9

0 1000 2000 Feet

-  Dip Site
-  Drop Point
-  Uncontrolled Fire Edge
-  Contained Line
-  Completed Dozer Line
-  Wildfire Daily Fire Perimeter
-  Non-FS Lands



IAP Map

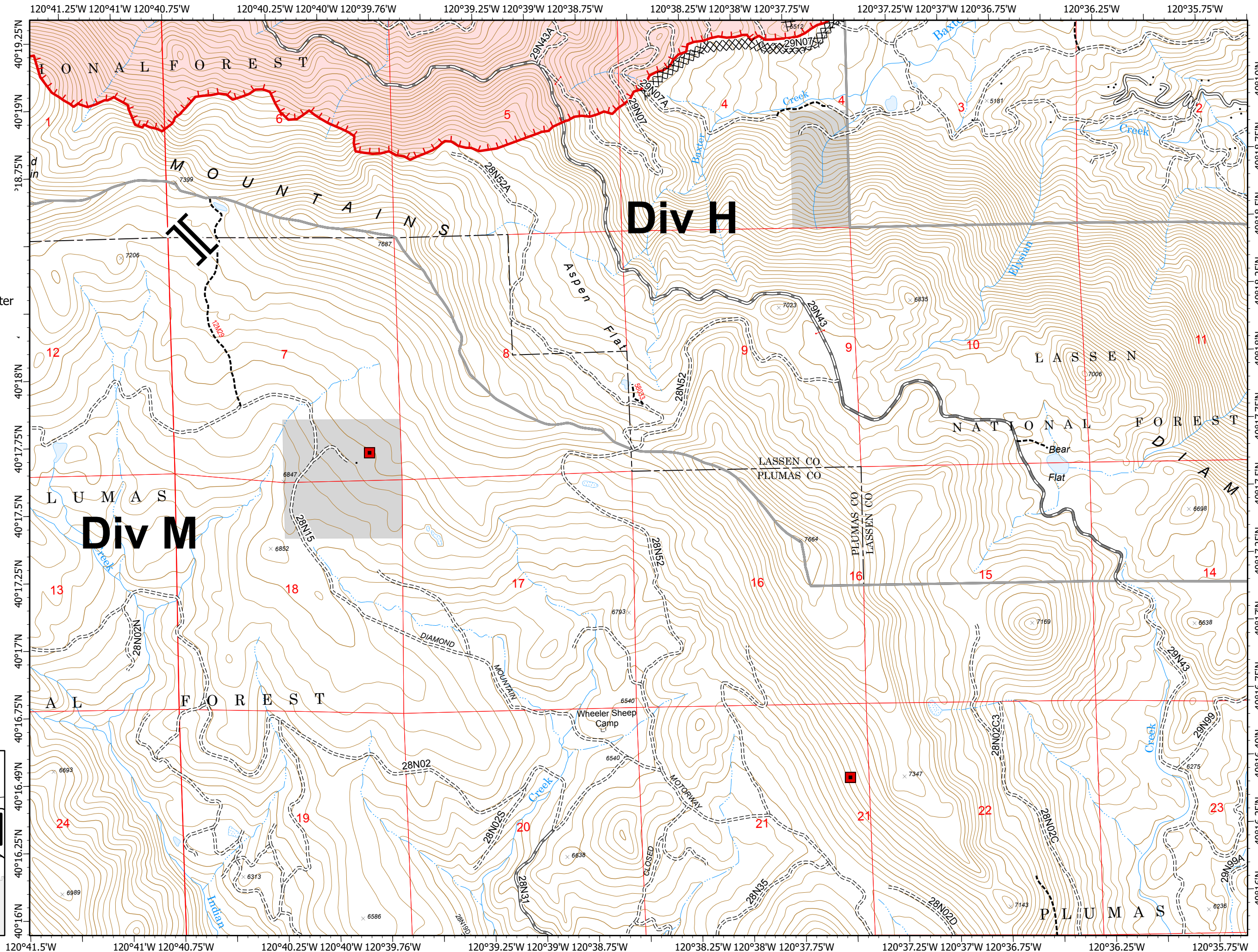
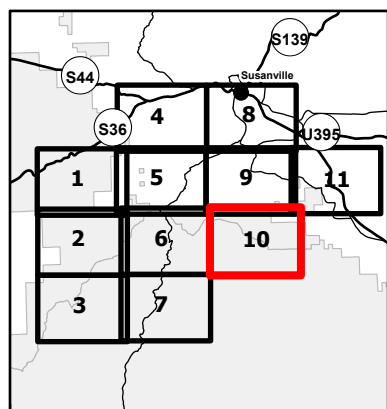
CA-PNF-001299

August 26, 2020

Page Number: 10

0 1000 2000 Feet

- Mine Hazards
- || Branch Break
- Uncontrolled Fire Edge
- ××× Completed Dozer Line
- Wildfire Daily Fire Perimeter
- Non-FS Lands




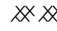


IAP Map

CA-PNF-001299

August 26, 2020

Page Number: 11

0 1000 2000 Feet

-  Uncontrolled Fire Edge
-  Completed Dozer Line
-  Wildfire Daily Fire Perimeter
-  Non-FS Lands

