

Briefing Map

Claremont & Bear Fires

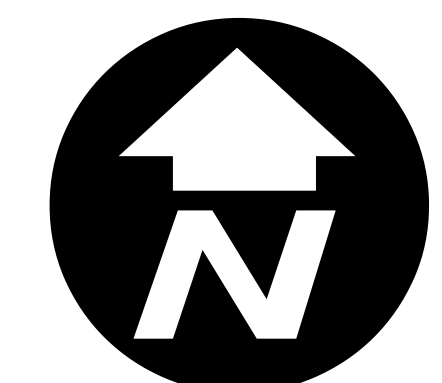
North Complex

CA-PNF-001308

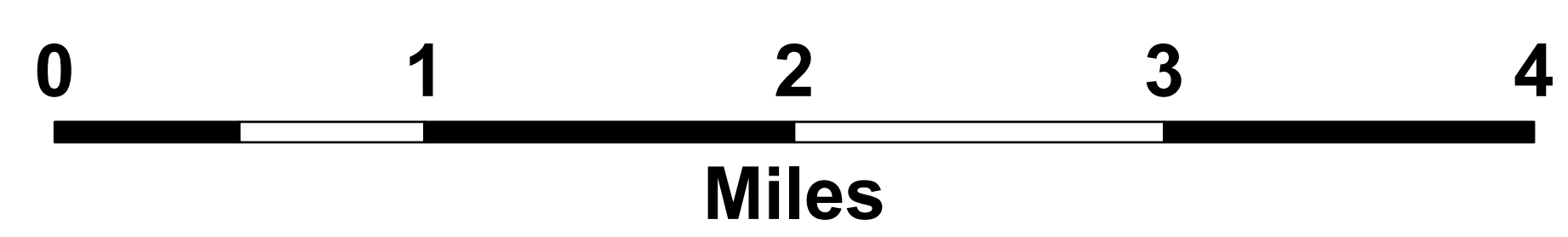
August 30, 2020



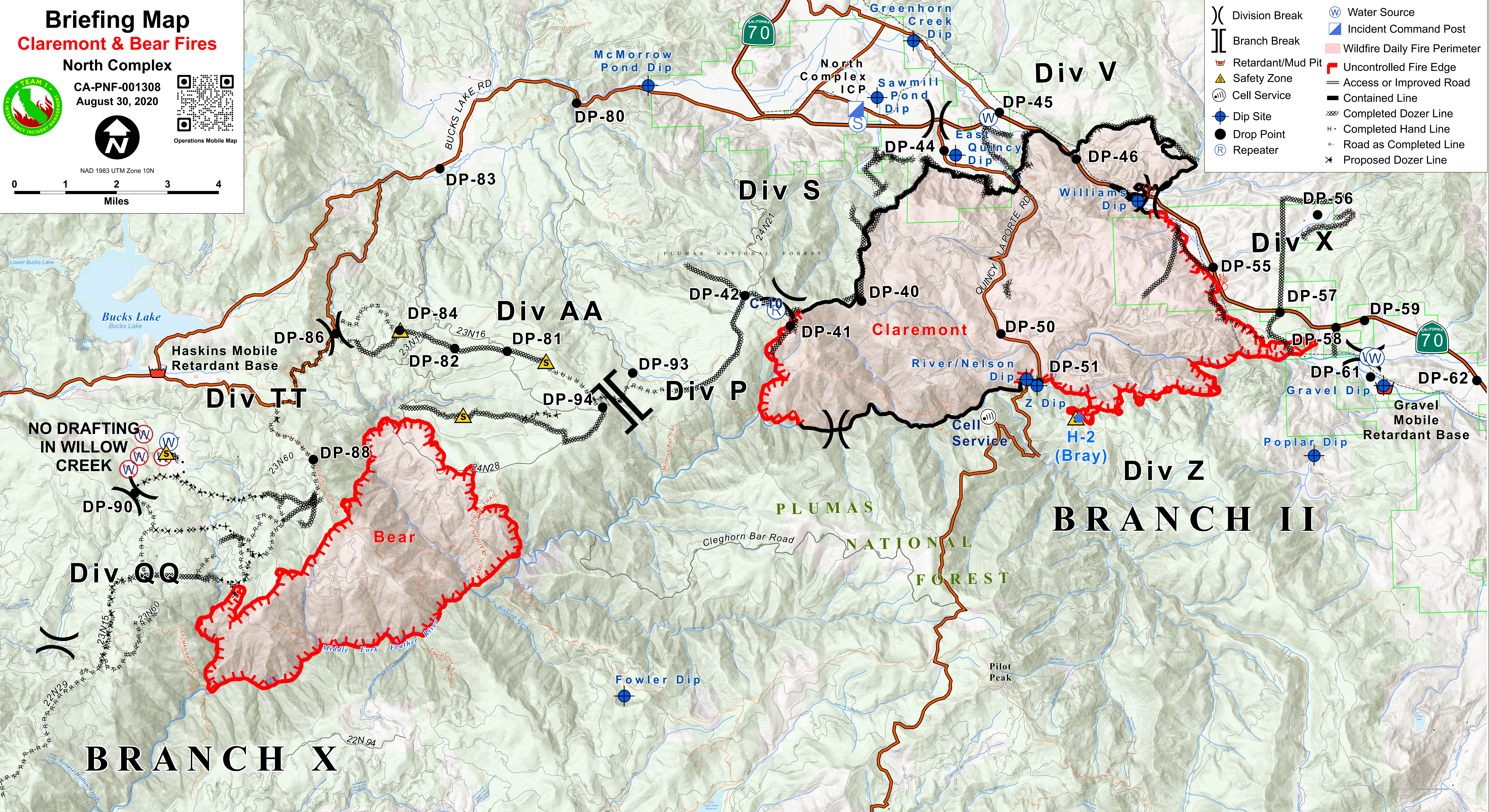
Operations Mobile Map



NAD 1983 UTM Zone 10N



	Division Break		Water Source
	Branch Break		Incident Command Post
	Retardant/Mud Pit		Wildfire Daily Fire Perimeter
	Safety Zone		Uncontrolled Fire Edge
	Cell Service		Access or Improved Road
	Dip Site		Contained Line
	Drop Point		Completed Dozer Line
	Repeater		Completed Hand Line
			Road as Completed Line
			Proposed Dozer Line



NO DRAFTING
IN WILLOW
CREEK

Div Q

BRANCH X

Div TT

Div AA

Div P

Div S

Div V

Div X

Div Z

BRANCH II

Bear

PLUMAS
NATIONAL
FOREST

Claremont

DP-80

DP-83

DP-86

DP-84

DP-82

DP-81

DP-93

DP-94

DP-42

DP-41

DP-40

DP-50

DP-51

DP-45

DP-44

DP-46

DP-56

DP-55

DP-57

DP-59

DP-58

DP-61

DP-62

Fowler Dip

Pilot Peak

Cleghorn Bar Road

McMorrow Pond Dip

Greenhorn Creek Dip

Sawmill Pond Dip

East Quincy Dip

Williams Dip

Poplar Dip

Gravel Dip

River/Nelson Dip

H-2 (Bray)

Z Dip

Cell Service

Bucks Lake

Lower Bucks Lake

Haskins Mobile Retardant Base

Gravel Mobile Retardant Base

North Complex ICP