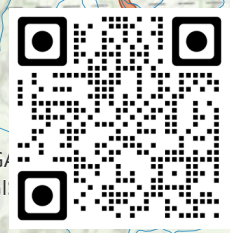
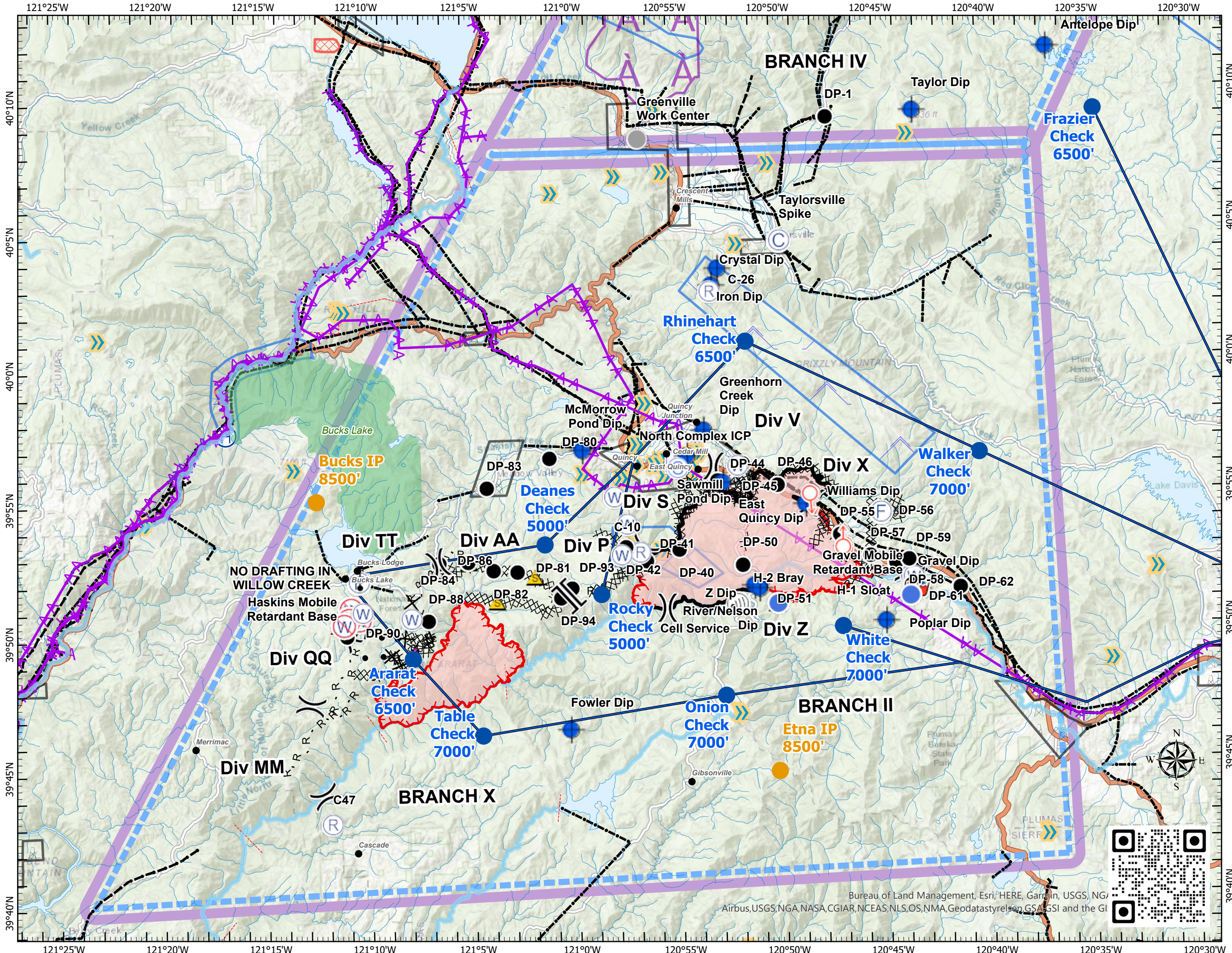


Pilot Map

North Complex
CA-PNF-001308
8/31/2020

- Camp
- Dip Site
- Drop Point
- Fire Station
- Gate
- Helispot
- Incident Command Post
- Internet Access
- Repeater
- Retardant/Mud Pit
- Safety Zone
- Spot Fire
- Staging Area
- Water Source
- Restricted Water Source
- Other
- Division Break
- Branch Break
- Check Point
- Initial Point
- Helicopter Routes North
- Aerial Hazard
- Powerline
- Telephone wires
- Airport
- Helibase
- Hangglide/Paraglide
- Jettison
- Powerline
- Turbulence
- Uncontrolled Fire Edge
- Contained Line
- Completed Dozer Line
- Completed Hand Line
- Road as Completed Line
- Access or Improved Road
- Proposed Dozer Line
- Unknown
- Wildfire Daily Fire Perimeter
- TFR

0 1.5 3 6 Miles



Bureau of Land Management, Esri, HERE, Garmin, USGS, NGI, Airbus, USGS, NGA, NASA, CGIAR, NCEAS, NLS, OS, NMA, Geodatastyrelsen, GSA, GSI and the GI

Incident Name	Feature Category	Label	Lat	Long
Bear	Dip Site	Fowler Dip	39° 46.437' N	121° 0.317' W
Bear	Drop Point	DP-80	39° 56.554' N	121° 1.080' W
Bear	Drop Point	DP-81	39° 52.354' N	121° 2.734' W
Bear	Drop Point	DP-82	39° 52.420' N	121° 3.893' W
Bear	Drop Point	DP-83	39° 55.490' N	121° 4.136' W
Bear	Drop Point	DP-84	39° 52.750' N	121° 5.101' W
Bear	Drop Point	DP-86	39° 52.716' N	121° 6.514' W
Bear	Drop Point	DP-88	39° 50.579' N	121° 7.071' W
Bear	Drop Point	DP-90	39° 50.072' N	121° 11.030' W
Bear	Drop Point	DP-93	39° 51.703' N	121° 0.091' W
Bear	Drop Point	DP-94	39° 51.362' N	121° 0.653' W
Bear	Fire Station		39° 52.077' N	121° 10.399' W
Bear	Restricted Water Source	NO DRAFTING IN WILLOW CREEK	39° 51.072' N	121° 10.807' W
Bear	Restricted Water Source		39° 50.678' N	121° 10.395' W
Bear	Restricted Water Source		39° 50.696' N	121° 10.916' W
Bear	Restricted Water Source		39° 50.480' N	121° 11.156' W
Bear	Retardant/Mud Pit	Haskins Mobile Retardant Base	39° 52.129' N	121° 10.470' W
Bear	Safety Zone		39° 52.753' N	121° 5.089' W
Bear	Safety Zone		39° 51.277' N	121° 3.740' W
Bear	Safety Zone		39° 52.165' N	121° 1.882' W
Bear	Safety Zone		39° 50.755' N	121° 10.319' W
Bear	Water Source		39° 50.932' N	121° 10.259' W
Bear	Water Source		39° 50.681' N	121° 7.885' W
Claremont	Camp	Taylorville Spike	40° 4.510' N	120° 49.715' W
Claremont	Dip Site	Crystal Dip	40° 2.883' N	120° 53.081' W
Claremont	Dip Site	East Quincy Dip	39° 55.520' N	120° 52.720' W
Claremont	Dip Site	Gravel Dip	39° 51.414' N	120° 43.384' W
Claremont	Dip Site	Greenhorn Creek Dip	39° 57.485' N	120° 53.595' W
Claremont	Dip Site	McMorrow Pond Dip	39° 56.827' N	120° 59.485' W
Claremont	Dip Site	Poplar Dip	39° 50.253' N	120° 44.957' W
Claremont	Dip Site	River/Nelson Dip	39° 51.670' N	120° 51.270' W
Claremont	Dip Site	Sawmill Pond Dip	39° 56.532' N	120° 54.425' W
Claremont	Dip Site	Sloat Dip	39° 51.894' N	120° 43.563' W
Claremont	Dip Site	Williams Dip	39° 54.662' N	120° 48.713' W
Claremont	Dip Site	Z Dip	39° 51.560' N	120° 51.040' W
Claremont	Dip Site		39° 51.689' N	120° 43.963' W
Claremont	Drop Point	DP-40	39° 53.072' N	120° 54.874' W
Claremont	Drop Point	DP-41	39° 52.679' N	120° 56.463' W
Claremont	Drop Point	DP-42	39° 53.211' N	120° 57.453' W
Claremont	Drop Point	DP-44	39° 55.603' N	120° 52.972' W
Claremont	Drop Point	DP-45	39° 56.231' N	120° 51.730' W
Claremont	Drop Point	DP-46	39° 55.404' N	120° 50.053' W
Claremont	Drop Point	DP-50	39° 52.457' N	120° 51.812' W
Claremont	Drop Point	DP-51	39° 51.616' N	120° 50.999' W
Claremont	Drop Point	DP-55	39° 53.503' N	120° 47.086' W
Claremont	Drop Point	DP-56	39° 54.197' N	120° 45.100' W
Claremont	Drop Point	DP-57	39° 52.706' N	120° 45.634' W
Claremont	Drop Point	DP-58	39° 52.424' N	120° 44.404' W
Claremont	Drop Point	DP-59	39° 52.534' N	120° 43.770' W
Claremont	Drop Point	DP-61	39° 51.569' N	120° 43.667' W
Claremont	Drop Point	DP-62	39° 51.460' N	120° 41.320' W
Claremont	Fire Station		39° 54.320' N	120° 45.083' W
Claremont	Helispot	H-1 Sloat	39° 51.190' N	120° 43.720' W
Claremont	Helispot	H-2 Bray	39° 50.992' N	120° 50.131' W
Claremont	Incident Command Post	North Complex ICP	39° 56.346' N	120° 54.903' W
Claremont	Other	Greenville Work Center	40° 8.383' N	120° 56.488' W
Claremont	Repeater	C-10	39° 52.999' N	120° 56.753' W
Claremont	Repeater	C-26	40° 2.657' N	120° 53.170' W
Claremont	Repeater	C47	39° 43.076' N	121° 11.897' W
Claremont	Safety Zone		39° 51.899' N	120° 43.687' W
Claremont	Safety Zone		39° 51.391' N	120° 43.434' W
Claremont	Safety Zone		39° 50.995' N	120° 50.201' W
Claremont	Staging Area		39° 56.108' N	120° 54.869' W
Claremont	Water Source		39° 56.150' N	120° 51.972' W
Claremont	Water Source		39° 51.918' N	120° 43.699' W
Claremont	Water Source		39° 51.894' N	120° 43.554' W
Claremont	Water Source		39° 54.055' N	120° 57.376' W
Claremont	Water Source		39° 52.906' N	120° 57.665' W
Claremont	Water Source		39° 55.071' N	120° 57.971' W
Sheep	Aerial Hazard		40° 23.693' N	120° 37.933' W
Sheep	Camp	Susanville Base Camp	40° 24.836' N	120° 38.101' W
Sheep	Dip Site	Antelope Dip	40° 11.515' N	120° 36.583' W
Sheep	Dip Site	Bridge Dip	40° 16.242' N	120° 55.199' W
Sheep	Dip Site	Emerson Dip	40° 21.972' N	120° 38.653' W
Sheep	Dip Site	Golf Dip	40° 21.977' N	120° 39.484' W
Sheep	Dip Site	Pipe Dip	40° 21.253' N	120° 38.221' W
Sheep	Dip Site	Richmond Dip	40° 22.465' N	120° 36.526' W
Sheep	Dip Site	Taylor Dip	40° 9.250' N	120° 43.135' W
Sheep	Drop Point	DP-1	40° 9.075' N	120° 47.345' W
Sheep	Drop Point	DP-10	40° 14.356' N	120° 45.095' W
Sheep	Drop Point	DP-17	40° 17.835' N	120° 46.833' W
Sheep	Drop Point	DP-20	40° 19.084' N	120° 44.387' W
Sheep	Drop Point	DP-23	40° 22.455' N	120° 46.908' W
Sheep	Drop Point	DP-24	40° 20.028' N	120° 48.286' W
Sheep	Drop Point	DP-25	40° 20.255' N	120° 47.764' W
Sheep	Drop Point	DP-26	40° 20.527' N	120° 48.591' W
Sheep	Drop Point	DP-27	40° 21.972' N	120° 48.203' W
Sheep	Drop Point	DP-28	40° 22.955' N	120° 42.513' W
Sheep	Drop Point	DP-29	40° 23.448' N	120° 47.361' W
Sheep	Drop Point	DP-30	40° 21.801' N	120° 41.216' W
Sheep	Drop Point	DP-31	40° 23.700' N	120° 42.160' W
Sheep	Drop Point	DP-32	40° 23.031' N	120° 40.479' W
Sheep	Drop Point	DP-35	40° 20.612' N	120° 36.269' W
Sheep	Drop Point	DP-36	40° 19.273' N	120° 37.413' W
Sheep	Drop Point	DP-37	40° 19.087' N	120° 38.871' W
Sheep	Repeater	C-3	40° 15.652' N	120° 33.453' W
Sheep	Repeater	C-46	40° 24.428' N	120° 57.151' W
Sheep	Retardant/Mud Pit	Gravel Mobile Retardant Base	39° 51.372' N	120° 43.363' W
Sheep	Safety Zone		40° 18.625' N	120° 39.392' W
Sheep	Safety Zone		40° 18.613' N	120° 39.061' W