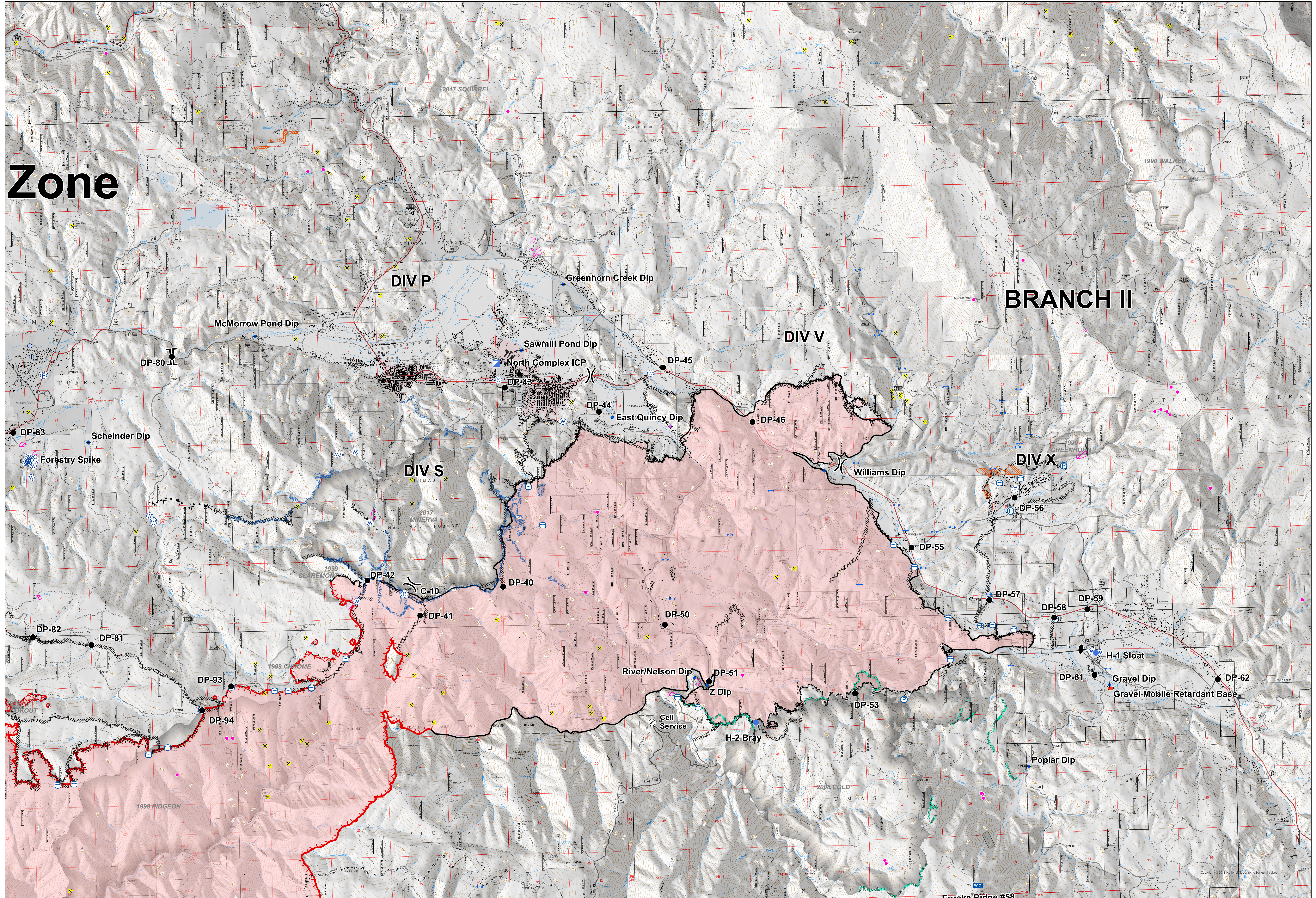


Zone



BRANCH II

Operations
North Complex
 BRANCH II
 September 9, 2020



- | | | | | |
|---|---|--|--|--|
| <ul style="list-style-type: none"> Branch Break Division Break Incident Command Post Camp Staging Area | <ul style="list-style-type: none"> Drop Point Helispot Dip Site Retardant/Mud Pit Water Source Repeater Cell Service | <ul style="list-style-type: none"> Bridge Fire Station Gate Mobile Weather Unit Water Development or Draft Site Zone Break | <ul style="list-style-type: none"> Pump Water Tank SPI Gate MANDATORY EXCLUSION AREA Mine Structure SPI Fuelbreak | <ul style="list-style-type: none"> Uncontrolled Fire Edge Completed Dozer Line Completed Hand Line Road as Completed Line Proposed Dozer Line MANDATORY EXCLUSION AREA Historic Fire (1990-2019, 100+ acres) Proclaimed Forest |
|---|---|--|--|--|

