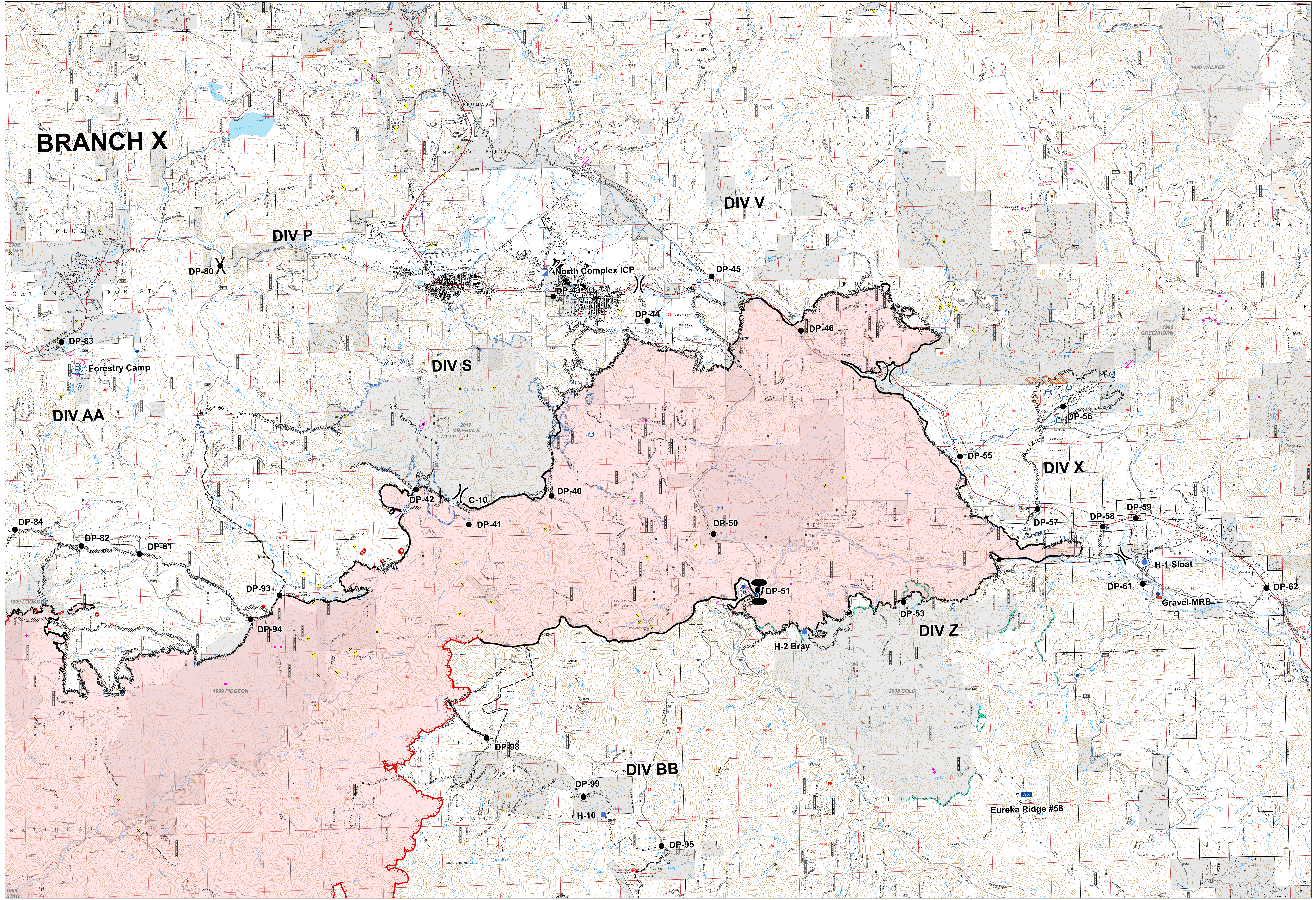
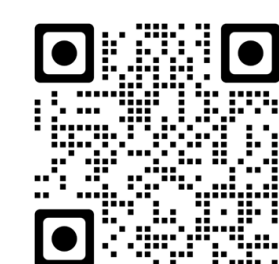


BRANCH X



Operations
North Complex
North Zone
BRANCH X - EAST
September 14, 2020



- | | | | | |
|-------------------------|--------------------------|-----------------------------------|----------------------------|---|
| ● Zone Break | ⊗ Gate | ⊗ Staging Area | ⊗ Access or Improved Road | ⊗ Mine |
| ⊗ Division Break | ⊗ Helipad | ⊗ Water Development or Draft Site | ⊗ Planned Fire Line | ⊗ Structure |
| ⊗ Bridge | ⊗ Hot Spot | ⊗ Water Source | ⊗ SFI Fuelbreak | ⊗ SFI Fuelbreak |
| ⊗ Incident Command Post | ⊗ Uncontrolled Fire Edge | ⊗ Contained Line | ⊗ Pump | ⊗ Dozer Lines - 2017 Minerva Fire |
| ⊗ Camp | ⊗ Mobile Weather Unit | ⊗ Completed Dozer Line | ⊗ Water Tank | ⊗ Dozer Lines - 2008 Cold Fire |
| ⊗ Closure | ⊗ Retardant/Mud Pit | ⊗ Completed Hand Line | ⊗ SFI Gate | ⊗ MANDATORY EXCLUSION AREA |
| ⊗ Drop Site | | ⊗ Road as Completed Line | ⊗ MANDATORY EXCLUSION AREA | ⊗ Historic Fire (1990-2019, 100+ acres) |
| ⊗ Drop Point | | | | |
| ⊗ Fire Station | | | | |

