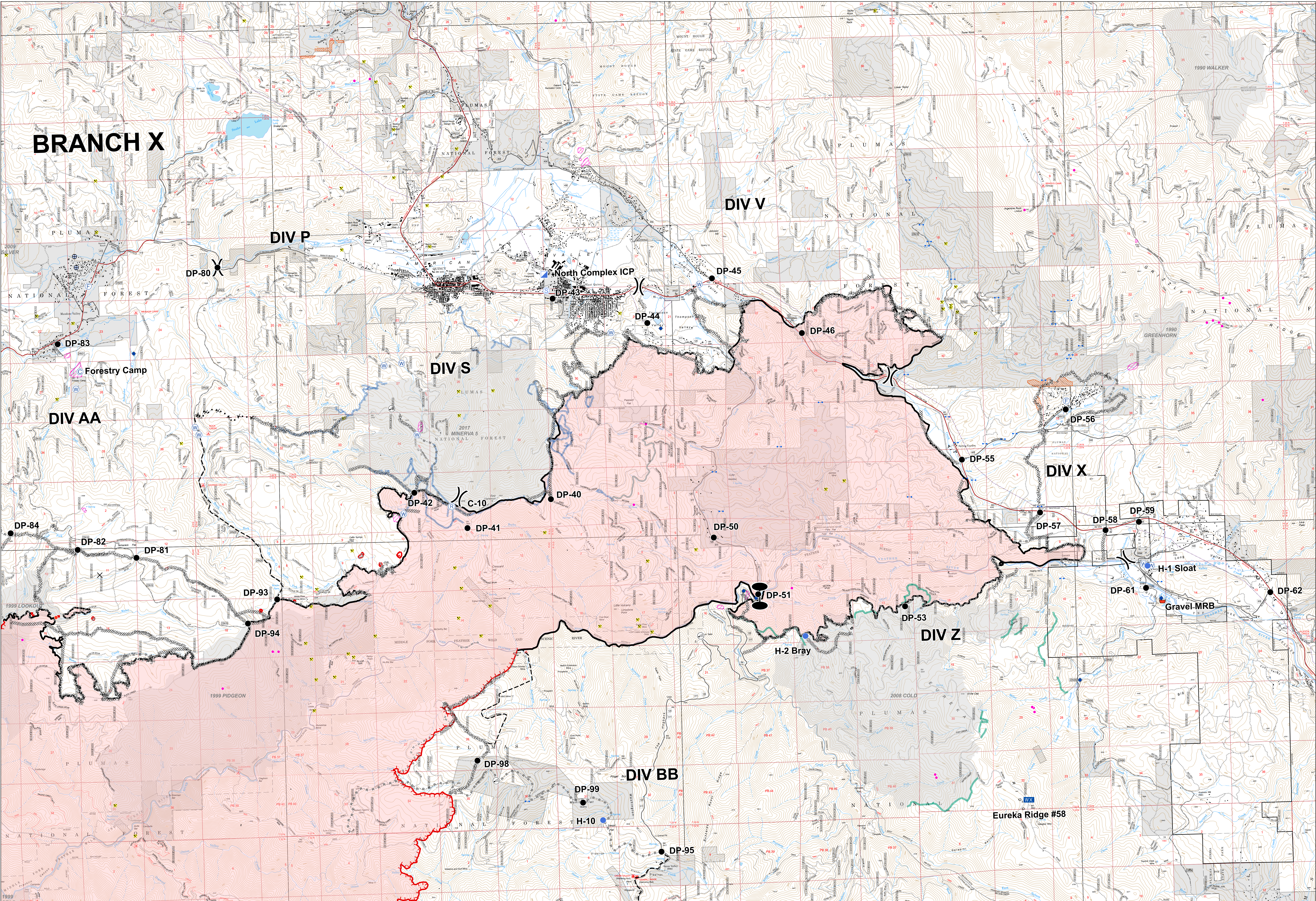


BRANCH X



Operations
North Complex
North Zone
BRANCH X - EAST
September 15, 2020



- Zone Break
- Division Break
- Camp
- Closure
- Drop Site
- Drop Point
- Fire Station
- Gate
- Helipad
- Hot Spot
- Incident Command Post
- Cell Service
- Mobile Weather Unit
- Repeater
- Retardant/Mud Pit
- Staging Area
- Water Development or Draft Site
- Water Source
- Uncontrolled Fire Edge
- Contained Line
- Completed Hand Line
- Road as Completed Line
- Access or Improved Road
- Planned Fire Line
- Water Tank
- SPI Gate
- MANDATORY EXCLUSION AREA
- Mine
- Structure
- SPI Fuelbreak
- Pump
- Water Tank
- SPI Gate
- MANDATORY EXCLUSION AREA
- Historic Fire (1990-1919, 100+ acres)

