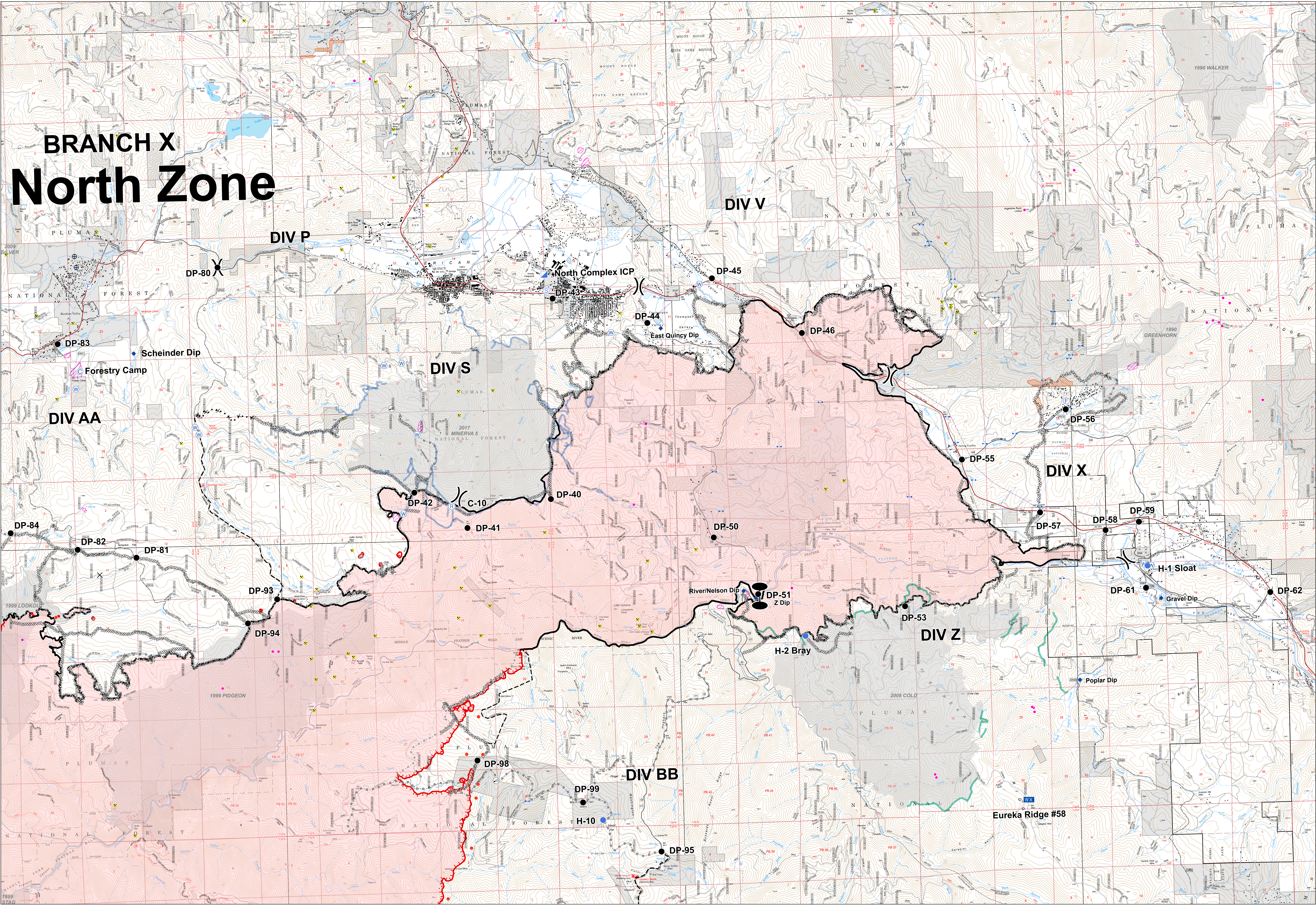


BRANCH X North Zone



**Operations
North Complex
North Zone
BRANCH X - EAST**
September 17, 2020



- Zone Break
- X Division Break
- ▬ Bridge
- ⊠ Camp
- ⊠ Closure
- ⊠ Dip Site
- Drop Point
- ⊠ Fire Station
- ▬ Gate
- Hot Spot
- ⊠ Incident Command Post
- ⊠ Cell Service
- ⊠ Mobile Weather Unit
- ⊠ Repeater
- ⊠ Staging Area
- ⊠ Water Development or Draft Site
- ⊠ Water Source
- ▬ Uncontrolled Fire Edge
- ▬ Completed Line
- ▬ Completed Dozer Line
- ▬ Completed Hand Line
- ▬ Road as Completed Line
- ▬ Proposed Dozer Line
- ▬ Planned Fire Line
- ⊠ Pump
- ⊠ Water Tank
- ⊠ SPI Gate
- MANDATORY EXCLUSION AREA
- ⊠ Mine
- ⊠ Structure
- ▬ SPI Fuelbreak
- ▬ Dozer Lines - 2017 Minerva Fire
- ▬ Dozer Lines - 2008 Cold Fire
- ▬ MANDATORY EXCLUSION AREA
- ▬ Valley Creek Special Interest Area
- ▬ Challenge Experimental Forest
- ▬ Historic Fire (1990-2019, 100+ acres)

