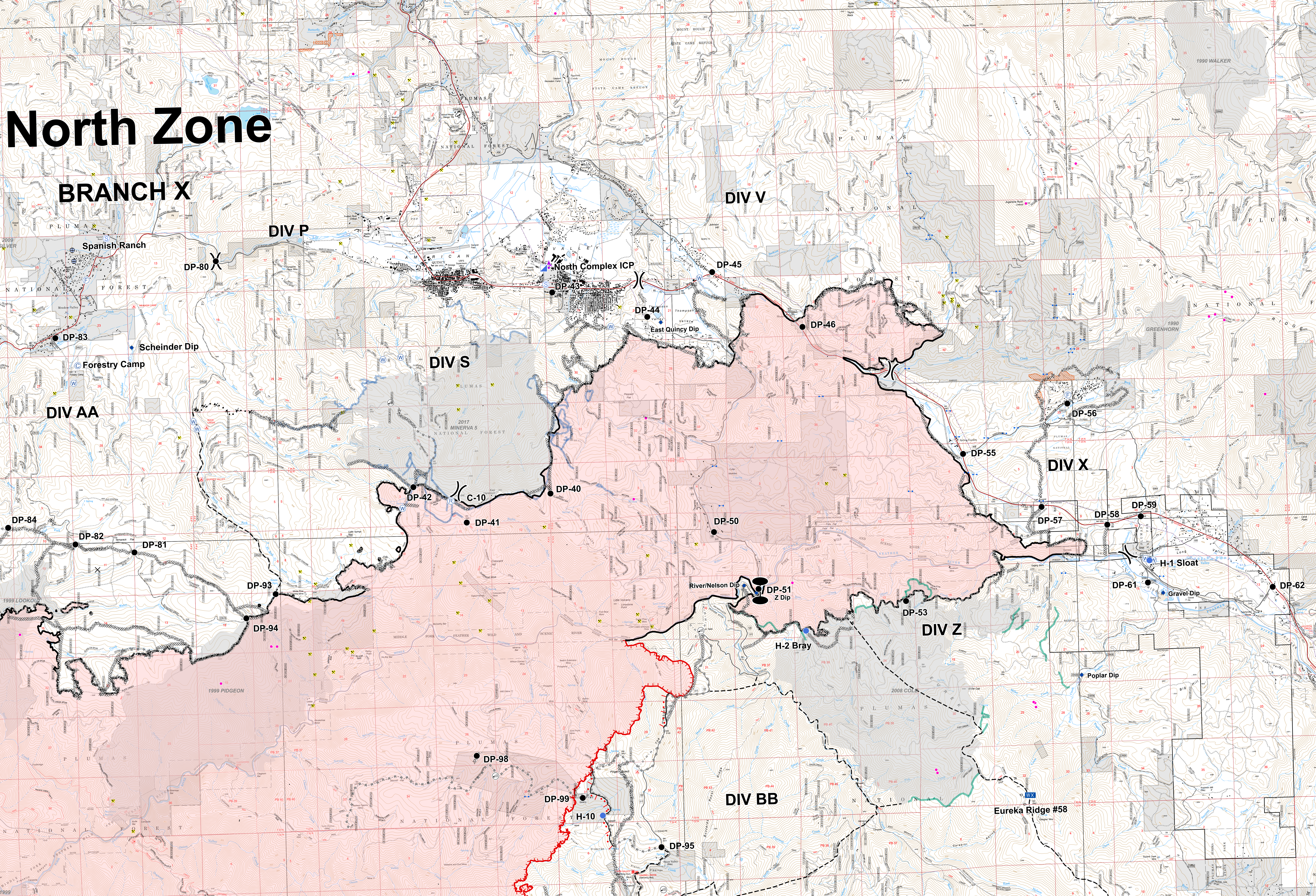


North Zone

BRANCH X



Operations
North Complex
North Zone
BRANCH X - EAST
 September 20, 2020



- Zone Break
- ⚡ Aerial Hazard
- ⌘ Division Break
- Ⓜ Bridge
- Ⓜ Camp
- Ⓜ Closure
- Ⓜ Dip Site
- Drop Point
- 🔥 Fire Station
- Ⓜ Gate
- 📡 Helispot
- 📡 Incident Command Post
- 📡 Cell Service
- 📡 Mobile Weather Unit
- 📡 Repeater
- 📡 Staging Area
- 📡 Water Development or Draft Site
- 🔴 Uncontrolled Fire Edge
- 🟡 Contained Line
- 🟢 Completed Dozer Line
- 🟢 Completed Hand Line
- 🟢 Road as Completed Line
- 🟢 Access or Improved Road
- 🟢 Active Burnout
- 🟢 Proposed Dozer Line
- 🟢 Water Source
- 🟢 Pump
- 🟢 Water Tank
- 🟢 SPI Gate
- 🟢 Hazmat
- 🟢 Mine
- 🟢 Structure
- 🟢 Planned Fire Line
- 🟢 SPI Fuelbreak
- 🟢 Dozer Lines - 2017 Minerva Fire
- 🟢 Dozer Lines - 2008 Cold Fire
- 🟢 MANDATORY EXCLUSION AREA
- 🟢 Valley Creek Special Interest Area
- 🟢 Challenge Experimental Forest
- 🟢 Historic Fire (1990-2019, 100+ acres)

