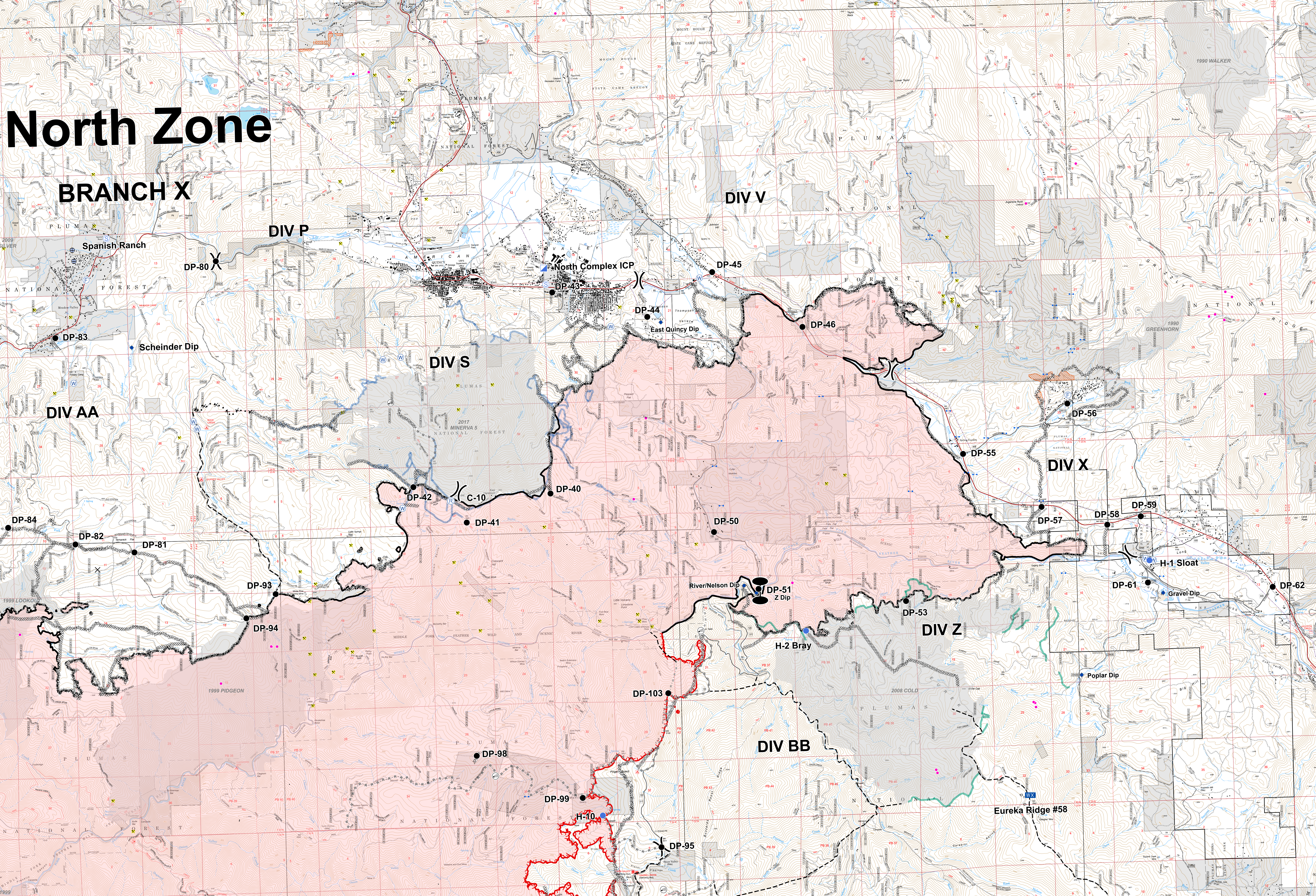


North Zone

BRANCH X



Operations
North Complex
North Zone
BRANCH X - EAST
 September 23, 2020



- | | | | |
|---|---|---|--|
| <ul style="list-style-type: none"> Zone Break Division Break Bridge Closure Dip Site Drip Point Fire Station Gate Helispot | <ul style="list-style-type: none"> Incident Command Post Cell Service Mobile Weather Unit Repeater Staging Area Water Development or Draft Site Water Source Pump Water Tank SPI Gate Uncontrolled Fire Edge Contained Line | <ul style="list-style-type: none"> Completed Dozer Line Completed Hand Line Road as Completed Line Access or Improved Road Proposed Dozer Line Planned Fire Line SPI Fuelbreak Dozer Lines - 2017 Minerva Fire Dozer Lines - 2008 Cold Fire MANDATORY EXCLUSION AREA Historic Fire (1990-2019, 100+ acres) | <ul style="list-style-type: none"> MANDATORY EXCLUSION AREA Mine Structure SPI Fuelbreak Dozer Lines - 2017 Minerva Fire Dozer Lines - 2008 Cold Fire MANDATORY EXCLUSION AREA Historic Fire (1990-2019, 100+ acres) |
|---|---|---|--|

