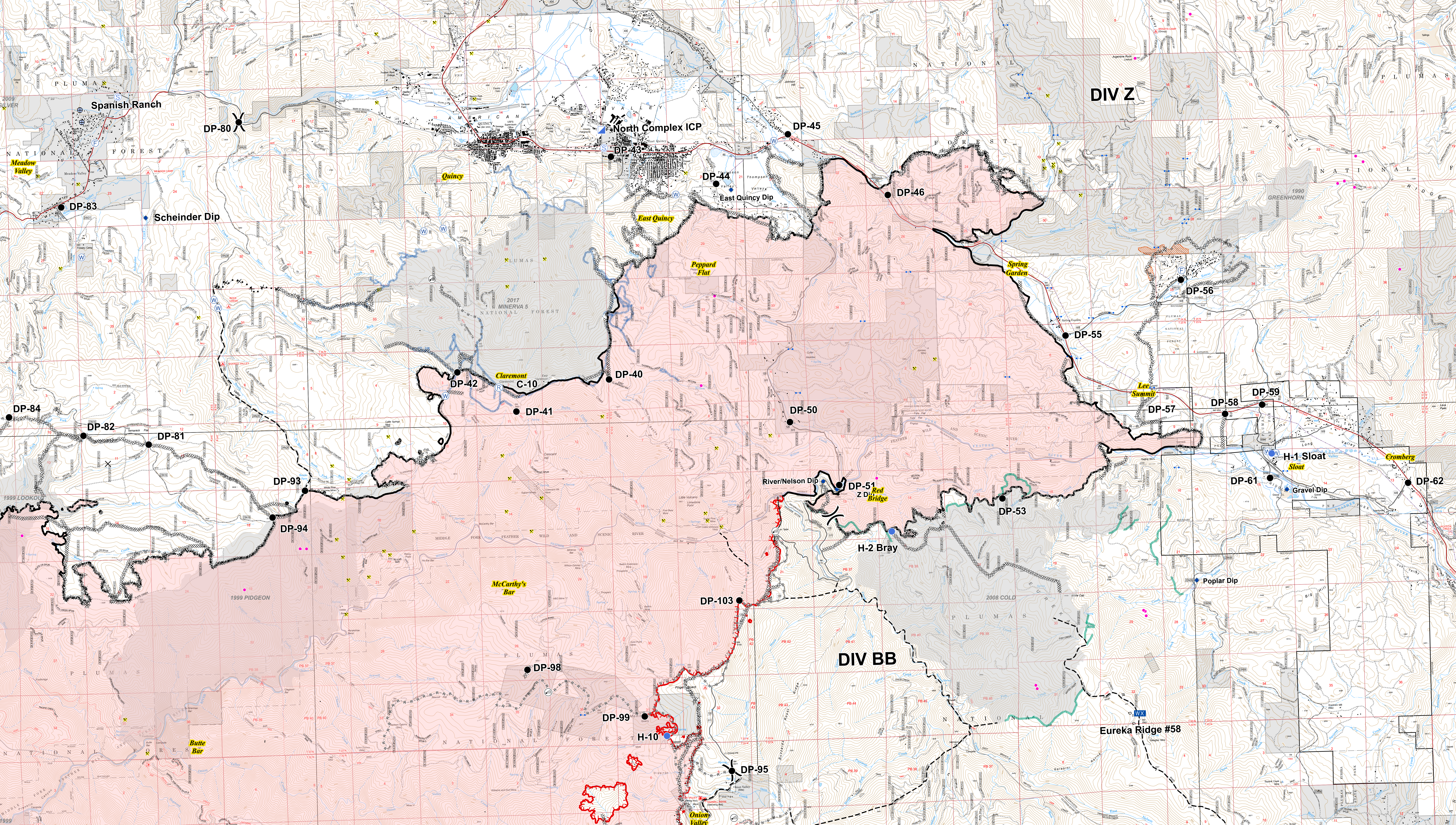
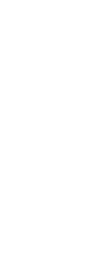


North Zone



Operations
North Complex
Division: Z, BB
 September 25, 2020



- | | | | | |
|---|---|---|---|--|
| <ul style="list-style-type: none"> X Division Break ⊗ Bridge ⊗ Closure ◆ Dip Site ● Drop Point ⊕ Fire Station ⊖ Gate ⊕ Helispot | <ul style="list-style-type: none"> ⊕ Incident Command Post ⊕ Cell Service ⊕ Mobile Weather Unit ⊕ Repeater ⊕ Staging Area ⊕ Water Development or Draft Site ⊕ Water Source | <ul style="list-style-type: none"> — Uncontrolled Fire Edge — Contained Line ⊗ Completed Dozer Line H - Completed Hand Line — Road as Completed Line — Access or Improved Road — Active Burnout ⊗ Proposed Dozer Line | <ul style="list-style-type: none"> — Planned Fire Line ⊕ Pump ⊕ Water Tank ⊕ SPI Gate ⊕ MANDATORY EXCLUSION AREA ⊕ MINE | <ul style="list-style-type: none"> ■ Structure ⊕ SPI Fuelbreak ⊕ Dozer Lines - 2017 Minerva Fire ⊕ Dozer Lines - 2008 Cold Fire ⊕ MANDATORY EXCLUSION AREA ⊕ Historic Fire (1990-2019, 100+ acres) |
|---|---|---|---|--|

