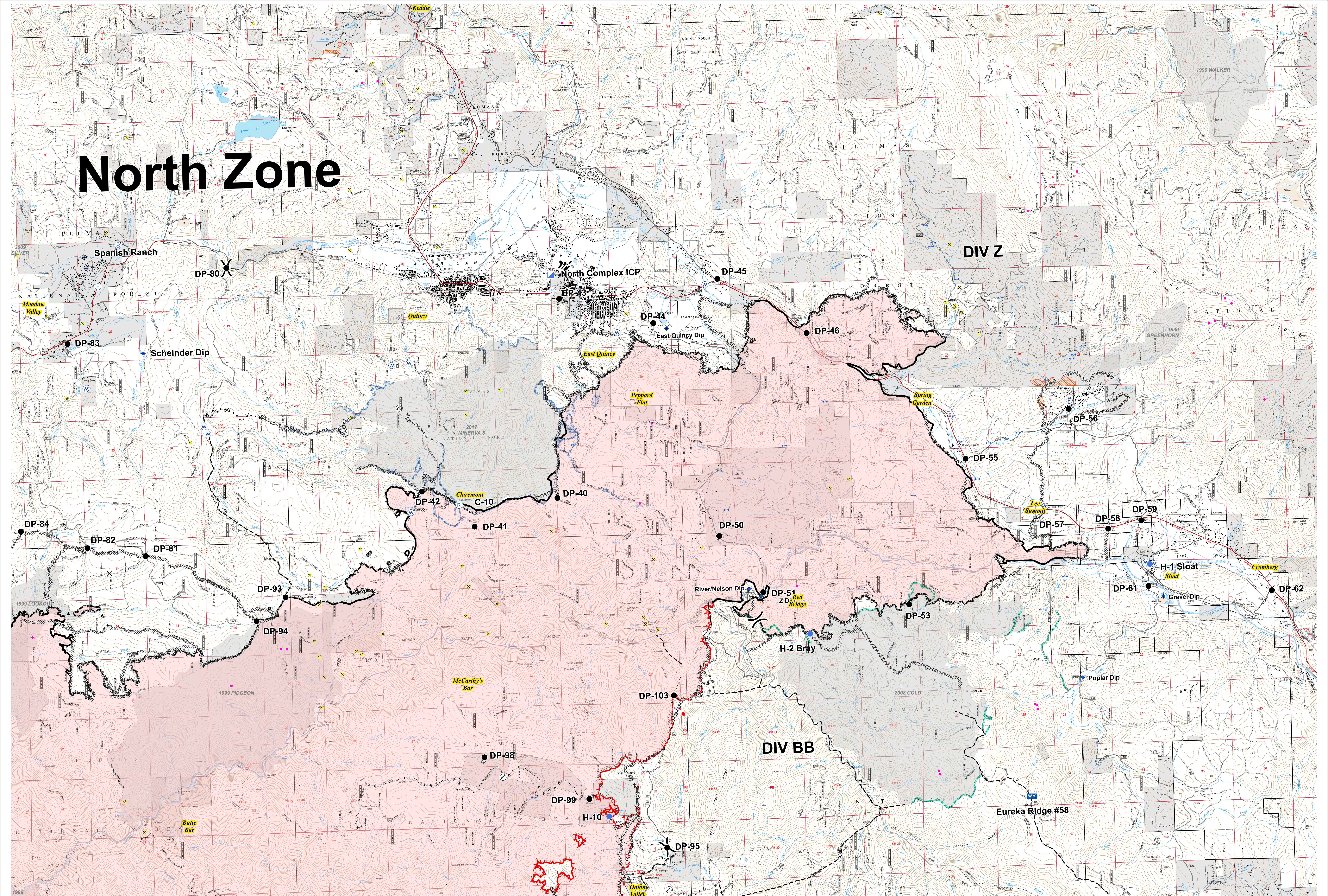


North Zone



Operations
North Complex
Division: Z, BB
 September 26, 2020



- X Division Break
- ⊠ Bridge
- ⊠ Closure
- Dip Site
- Drop Point
- Fire Station
- Gate
- Helispot
- ⊠ Incident Command Post
- ⊠ Cell Service
- ⊠ Mobile Weather Unit
- ⊠ Repeater
- ⊠ Staging Area
- ⊠ Water Development or Draft Site
- ⊠ Water Source
- Uncontrolled Fire Edge
- Contained Line
- Completed Dozer Line
- Completed Hand Line
- Road as Completed Line
- Access or Improved Road
- Active Burnout
- Proposed Dozer Line
- Planned Fire Line
- ⊠ Pump
- ⊠ Water Tank
- ⊠ SPI Gate
- ⊠ MANDATORY EXCLUSION AREA
- ⊠ MANDATORY EXCLUSION AREA
- ⊠ Mine
- ⊠ Structure
- ⊠ SPI Fuelbreak
- ⊠ Dozer Lines - 2017 Minerva Fire
- ⊠ Dozer Lines - 2008 Cold Fire
- ⊠ MANDATORY EXCLUSION AREA
- ⊠ MANDATORY EXCLUSION AREA
- ⊠ Historic Fire (1990-2019, 100+ acres)

