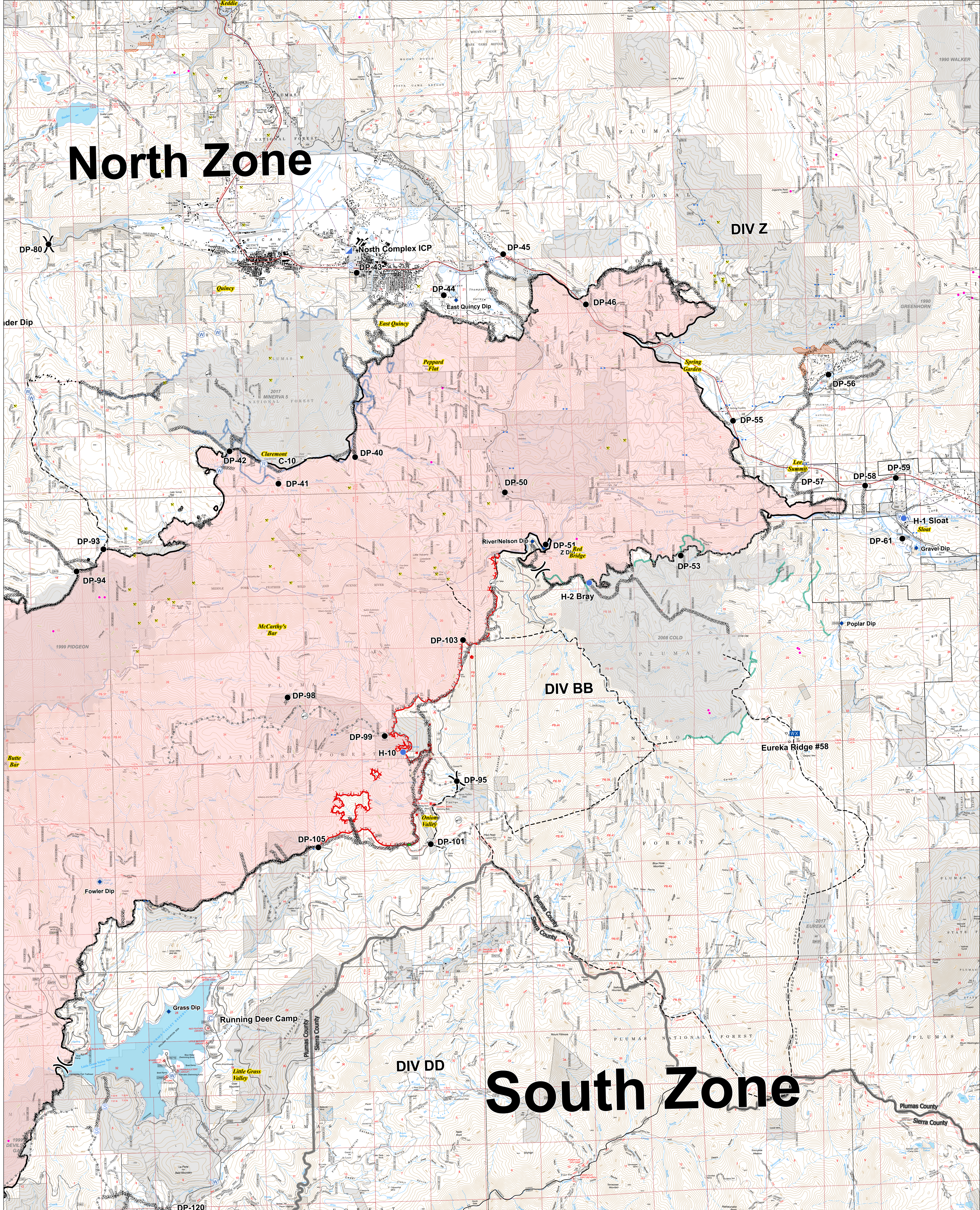


# North Zone

# South Zone



Operations  
North Complex  
Div DD, BB, Z

September 26, 2020



- ( ) Division Break
- ▬ Bridge
- ⊙ Camp
- Dip Site
- Drop Point
- ⊙ Fire Station
- Gate
- Helispot
- ▬ Incident Command Post
- ⊙ Cell Service
- ⊙ Mobile Weather Unit
- ⊙ Repeater
- ⊙ Staging Area
- ⊙ Water Source
- ⊙ SPI Gate
- MANDATORY EXCLUSION AREA
- ✖ Mine
- ✖ Structure
- ▬ SPI Fuelbreak
- ▬ Uncontrolled Fire Edge
- ▬ Contained Line
- ▬ Completed Dozer Line
- ▬ Completed Hand Line
- ▬ Road as Completed Line
- ▬ Access or Improved Road
- ▬ Completed Plow Line
- ▬ Active Burnout
- ✖ Proposed Dozer Line
- ▬ Planned Fire Line
- ▬ MANDATORY EXCLUSION AREA
- ▬ Historic Fire (1990-2019, 100+ acres)

