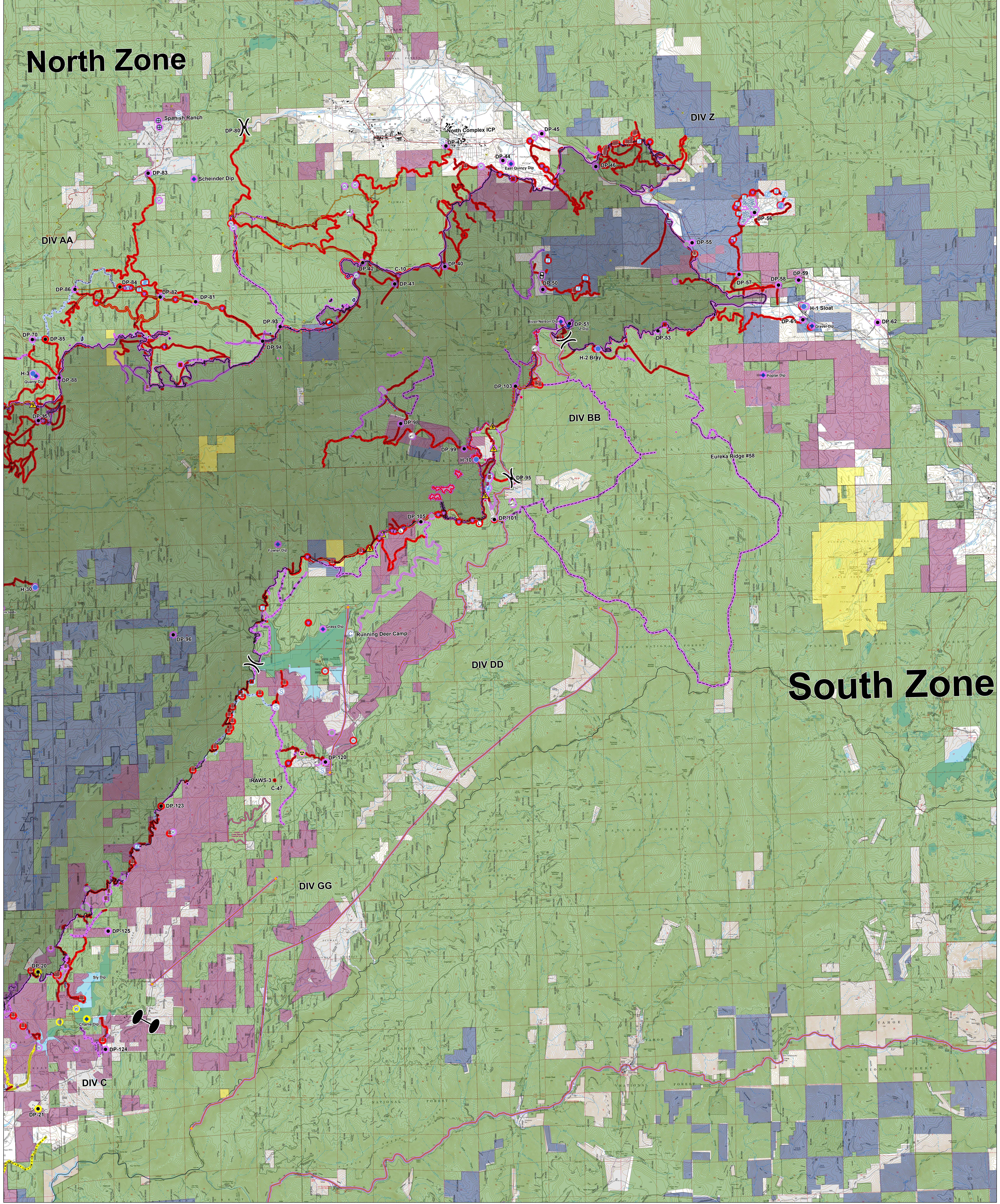


North Zone

South Zone



Suppression Repair and Ownership North Complex South Zone

September 28, 2020



- | | | | | | | |
|--|---|---|--|--|--|---|
| Repair Status Points
<ul style="list-style-type: none"> ● Completed - Inspected ● Completed - Ready for Inspection ● In Progress ● Repair Needed ● No Repair Needed ● Other - See Comments ● Unknown | Repair Status Lines
<ul style="list-style-type: none"> — Completed - Inspected — Completed - Ready for Inspection — In Progress — Repair Needed — No Repair Needed — Other - See Comments — Unknown | Land Owner
<ul style="list-style-type: none"> BLM Other Private Sierra Pacific Industries Scope/Wheeler State Land USDA Forest Service National Park Local Government US FWS Other Federal Tribal Land | <ul style="list-style-type: none"> ● Camp ● Dig Site ● Dozer Path ● Drop Point ● Fence - Cut/Damaged ● Hazard ● Hazard Tree ● Helispot ● Cell Service ● Landing or Log Deck ● Other ● Repair Point | <ul style="list-style-type: none"> ● Retardant in Avoidance Area ● Safety Zone ● Staging Area ● Stream Crossing ● Structure Wrap ● Value at Risk ● Water Development or Draft Site ● Water Source — Uncontrolled Fire Edge — Contained Line — Completed Dozer Line | <ul style="list-style-type: none"> — H - Completed Hand Line — Road as Completed Line — Access or Improved Road — Completed Flow Line — Active Burnout — Completed Burnout — Proposed Dozer Line — Planned Fire Line — Aerial Retardant Drop — Repair Line — Road Repair — Management Action Point | <ul style="list-style-type: none"> ● Other ● SPI Gate ● Hazmat ● Mine ● Structure ● SPI Fuelbreak |
|--|---|---|--|--|--|---|

