

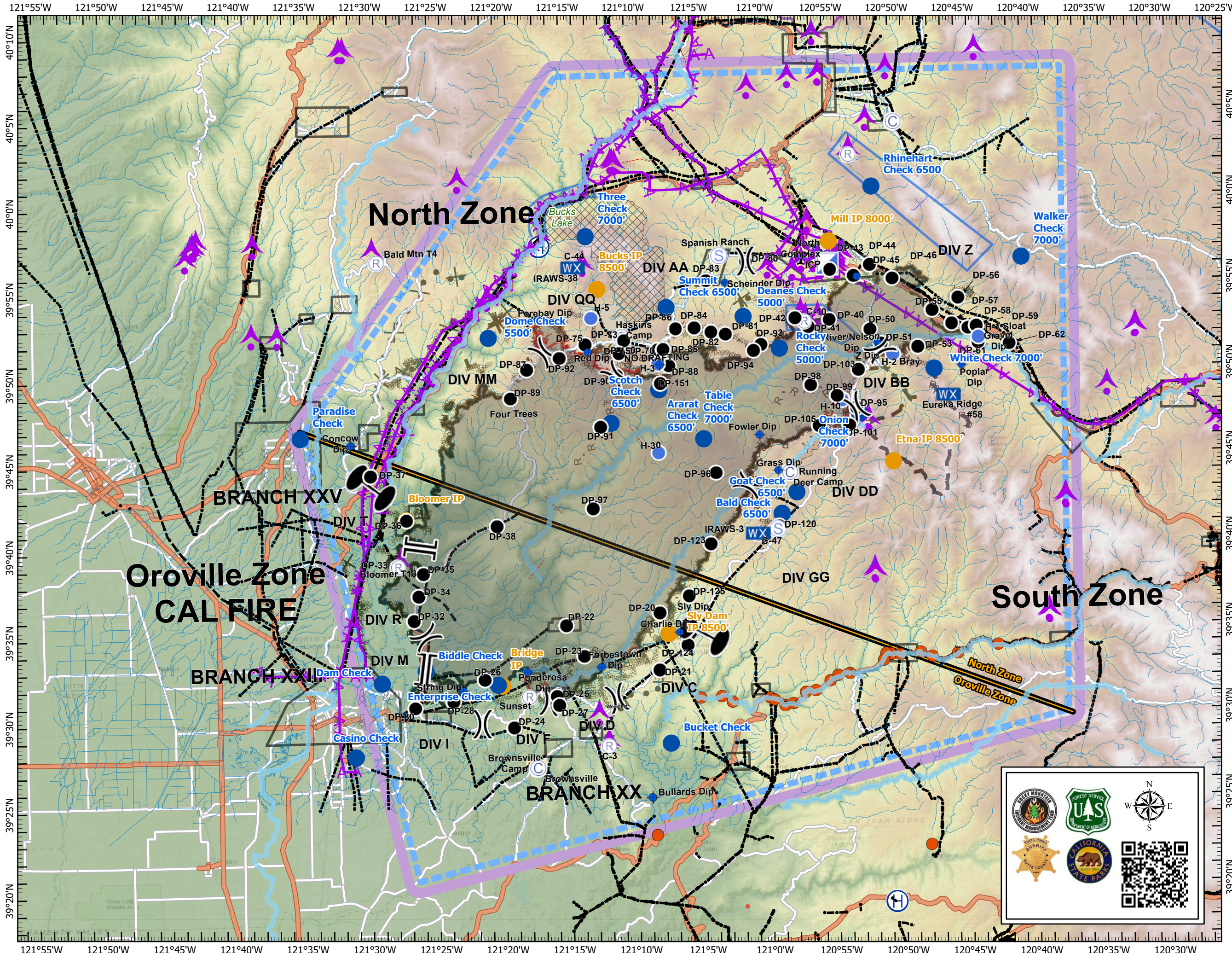
Pilot Map

North Complex
CA-PNF-001308

9-28-20

- Zone Break
- Division Break
- Branch Break
- Camp
- Dip Site
- Drop Point
- Helispot
- Incident Command Post
- Mobile Weather Unit
- Repeater
- Staging Area
- Check Point
- Intial Point
- Aerial Hazard
- Wilderness
- Powerline
- Telephone wires
- Airport
- Helibase
- Hangglide/Paraglide
- Jettison
- Powerline
- Turbulence
- Uncontrolled Fire Edge
- Contained Line
- Completed Dozer Line
- Completed Hand Line
- Road as Completed Line
- Access or Improved Road
- Completed Plow Line
- Active Burnout
- Proposed Dozer Line
- Planned Fire Line
- Other
- Wildfire Daily Fire Perimeter

0 3.25 6.5 13 Miles



IncidentName	FeatureCategory	Label	LatWGS84_DDM	LongWGS84_DDM
Bear	Branch Break		39° 56.554' N	121° 01.079' W
Bear	Branch Break		39° 44.114' N	121° 12.229' W
Bear	Dip Site	Fowler Dip	39° 46.436' N	121° 00.317' W
Bear	Dip Site	Quarry Dip	39° 50.635' N	121° 07.794' W
Bear	Dip Site	Scheinder Dip	39° 55.327' N	121° 02.699' W
Bear	Division Break		39° 52.721' N	121° 06.529' W
Bear	Division Break		39° 50.071' N	121° 11.030' W
Bear	Division Break		39° 47.172' N	121° 12.054' W
Bear	Drop Point	DP-80	39° 56.554' N	121° 01.079' W
Bear	Drop Point	DP-81	39° 52.353' N	121° 02.733' W
Bear	Drop Point	DP-82	39° 52.488' N	121° 03.840' W
Bear	Drop Point	DP-83	39° 55.489' N	121° 04.135' W
Bear	Drop Point	DP-84	39° 52.750' N	121° 05.100' W
Bear	Drop Point	DP-85	39° 51.525' N	121° 7.479' W
Bear	Drop Point	DP-86	39° 52.716' N	121° 06.514' W
Bear	Drop Point	DP-88	39° 50.578' N	121° 07.070' W
Bear	Drop Point	DP-89	39° 48.827' N	121° 19.077' W
Bear	Drop Point	DP-90	39° 50.071' N	121° 11.030' W
Bear	Drop Point	DP-91	39° 47.078' N	121° 12.311' W
Bear	Drop Point	DP-92	39° 51.134' N	120° 15.336' W
Bear	Drop Point	DP-93	39° 51.703' N	121° 00.091' W
Bear	Drop Point	DP-94	39° 51.361' N	121° 00.653' W
Bear	Drop Point	DP-95	39° 47.902' N	120° 52.940' W
Bear	Drop Point	DP-96	39° 44.297' N	121° 03.662' W
Bear	Drop Point	DP-97	39° 42.337' N	121° 13.002' W
Bear	Drop Point	DP-98	39° 49.547' N	120° 56.219' W
Bear	Drop Point	DP-99	39° 48.643' N	120° 54.400' W
Bear	Gate		39° 52.292' N	121° 10.360' W
Bear	Helispot	H-3	39° 50.699' N	121° 07.891' W
Bear	Mobile Weather Unit	IRAWS-59	39° 46.265' N	121° 06.558' W
Bear	Repeater	C-44	39° 56.318' N	121° 14.158' W
Bear	Repeater	C-47	39° 40.701' N	121° 00.552' W
Bear	Repeater	C-56	39° 42.923' N	121° 12.538' W
Bear	Restricted Water Source	NO DRAFTING IN WILLOW CREEK	39° 51.071' N	121° 10.807' W
Bear	Restricted Water Source		39° 50.677' N	121° 10.394' W
Bear	Restricted Water Source		39° 50.695' N	121° 10.916' W
Bear	Restricted Water Source		39° 50.479' N	121° 11.155' W
Bear	Safety Zone		39° 44.621' N	121° 14.037' W
Bear	Water Source		39° 50.931' N	121° 10.258' W
Bear	Water Source		39° 50.631' N	121° 07.882' W
Bear	Water Source		39° 47.448' N	121° 13.235' W
Claremont	Branch Break		39° 50.195' N	120° 50.730' W
Claremont	Dip Site	Cowcom	39° 46.200' N	121° 31.223' W
Claremont	Dip Site	Crystal Dip	40° 02.883' N	120° 53.080' W
Claremont	Dip Site	East Quincy Dip	39° 55.519' N	120° 52.720' W
Claremont	Dip Site	Gravel Dip	39° 51.414' N	120° 43.383' W
Claremont	Dip Site	Grass Dip	39° 44.365' N	120° 58.955' W
Claremont	Dip Site	Sly Dip	39° 36.102' N	121° 6.491' W
Claremont	Dip Site	Ponderosa	39° 32.883' N	121° 18.171' W
Claremont	Dip Site	Poplar Dip	39° 50.253' N	120° 44.957' W
Claremont	Dip Site	River/Nelson Dip	39° 51.670' N	120° 51.270' W
Claremont	Dip Site	String Dip	39° 31.862' N	121° 23.035' W
Claremont	Dip Site	Z Dip	39° 51.559' N	120° 51.040' W
Claremont	Division Break		39° 53.139' N	120° 56.607' W
Claremont	Division Break		39° 56.137' N	120° 53.114' W
Claremont	Division Break		39° 51.939' N	120° 43.809' W
Claremont	Division Break		39° 54.737' N	120° 48.404' W
Claremont	Drop Point	DP-101	39° 46.945' N	120° 53.514' W
Claremont	Drop Point	DP-123	39° 39.989' N	121° 3.929' W
Claremont	Drop Point	DP-40	39° 53.072' N	120° 54.873' W
Claremont	Drop Point	DP-41	39° 52.678' N	120° 56.463' W
Claremont	Drop Point	DP-42	39° 53.210' N	120° 57.452' W
Claremont	Drop Point	DP-43	39° 55.990' N	120° 54.752' W
Claremont	Drop Point	DP-44	39° 55.603' N	120° 52.971' W
Claremont	Drop Point	DP-45	39° 56.230' N	120° 51.729' W
Claremont	Drop Point	DP-46	39° 55.403' N	120° 50.053' W
Claremont	Drop Point	DP-50	39° 52.457' N	120° 51.811' W
Claremont	Drop Point	DP-51	39° 51.616' N	120° 50.998' W
Claremont	Drop Point	DP-53	39° 51.388' N	120° 48.228' W
Claremont	Drop Point	DP-55	39° 53.503' N	120° 47.086' W
Claremont	Drop Point	DP-57	39° 52.705' N	120° 45.633' W
Claremont	Drop Point	DP-58	39° 52.424' N	120° 44.403' W
Claremont	Drop Point	DP-59	39° 52.533' N	120° 43.769' W
Claremont	Drop Point	DP-61	39° 51.569' N	120° 43.666' W
Claremont	Drop Point	DP-62	39° 51.460' N	120° 41.320' W
Claremont	Drop Point	DP-70	39° 52.421' N	121° 6.743' W
Claremont	Fire Station		39° 54.319' N	120° 45.083' W
Claremont	Helispot	H-1 Sloat	39° 51.890' N	120° 43.627' W
Claremont	Helispot	H-2 Bray	39° 50.991' N	120° 50.123' W
Claremont	Incident Command Post	North Complex ICP	39° 56.345' N	120° 54.902' W
Claremont	Internet Access	Cell Service	39° 51.017' N	120° 52.084' W
Claremont	Mobile Weather Unit	Eureka Ridge #58	39° 48.526' N	120° 45.983' W

IncidentName	FeatureCategory	Label	LatWGS84_DDM	LongWGS84_DDM
Claremont	Repeater	C-10	39° 52.998' N	120° 56.752' W
Claremont	Repeater	C-26	40° 02.656' N	120° 53.169' W
Claremont	Repeater	C-3	39° 28.482' N	121° 12.135' W
Claremont	Repeater	C-56	39° 43.075' N	121° 11.896' W
Claremont	Repeater		40° 02.689' N	120° 53.155' W
Claremont	Spot Fire		39° 54.793' N	120° 48.291' W
Claremont	Spot Fire		39° 54.767' N	120° 48.333' W
Claremont	Spot Fire		39° 53.284' N	120° 46.864' W
Claremont	Spot Fire		39° 53.162' N	120° 46.854' W
Claremont	Spot Fire		39° 53.229' N	120° 46.941' W
Claremont	Spot Fire		39° 54.899' N	120° 48.499' W
Claremont	Spot Fire		39° 54.874' N	120° 48.430' W
Claremont	Spot Fire		39° 51.710' N	120° 46.569' W
Claremont	Spot Fire		39° 51.341' N	120° 49.255' W
Claremont	Spot Fire		39° 51.075' N	120° 50.496' W
Claremont	Spot Fire		39° 51.050' N	120° 50.516' W
Claremont	Staging Area		39° 56.108' N	120° 54.869' W
Claremont	Water Source		39° 56.149' N	120° 51.971' W
Claremont	Water Source		39° 51.918' N	120° 43.699' W
Claremont	Water Source		39° 51.893' N	120° 43.554' W
Claremont	Water Source		39° 54.054' N	120° 57.376' W
Claremont	Water Source		39° 52.905' N	120° 57.664' W
Claremont	Water Source		39° 55.070' N	120° 57.971' W
Claremont	Water Source		39° 55.098' N	120° 57.637' W
Claremont	Water Source		39° 54.231' N	121° 01.570' W
Claremont-Bear	Camp	Brownsville Camp	39° 27.259' N	121° 17.647' W
Claremont-Bear	Camp	Forestry Camp	39° 55.081' N	121° 03.724' W
Claremont-Bear	Camp	Haskins Camp	39° 52.304' N	121° 10.581' W
Claremont-Bear	Camp	Running Deer Camp	39° 44.234' N	120° 58.105' W
Claremont-Bear	Closure		39° 51.714' N	121° 08.872' W
Claremont-Bear	Closure		39° 51.727' N	121° 08.872' W
Claremont-Bear	Drop Point	DP-37	39° 44.429' N	121° 29.761' W
Claremont-Bear	Drop Point	DP-87	39° 50.490' N	121° 17.830' W
Claremont-Bear	Closure		39° 51.704' N	121° 08.872' W
Claremont-Bear	Drop Point	DP-105	39° 49.997' N	120° 55.814' W
Claremont-Bear	Drop Point	DP-120	39° 41.137' N	120° 58.979' W
Claremont-Bear	Drop Point	DP-124	39° 34.295' N	121° 06.062' W
Claremont-Bear	Drop Point	DP-125	39° 37.156' N	121° 05.898' W
Claremont-Bear	Fire Station		39° 52.098' N	121° 10.430' W
Claremont-Bear	Hazard	Four Open Mine Shafts	39° 45.027' N	121° 09.035' W
Claremont-Bear	Helispot	H-10	39° 48.380' N	120° 54.029' W
Claremont-Bear	Retardant/Mud Pit	Rogers Mobile Retardant Base		
Claremont-Bear	Internet Access		39° 52.086' N	121° 10.434' W
Claremont-Bear	Safety Zone		39° 49.131' N	121° 10.955' W
Claremont-Bear	Safety Zone		39° 47.867' N	121° 11.623' W
Claremont-Bear	Water Development or Draft Site		39° 51.917' N	121° 10.185' W
Claremont-Bear	Water Development or Draft Site		39° 56.759' N	121° 03.780' W
Claremont-Bear	Water Development or Draft Site		39° 56.598' N	121° 03.752' W
Claremont-Bear	Water Source		39° 51.889' N	121° 08.938' W
Claremont-Bear	Water Source		39° 51.997' N	121° 09.453' W
Claremont-Bear	Water Source		39° 51.913' N	121° 09.472' W
Claremont-Bear	Water Source		39° 51.913' N	121° 09.439' W
Claremont-Bear	Water Source		39° 51.983' N	121° 09.469' W
Claremont-Bear	Water Source		39° 51.941' N	121° 08.978' W
Claremont-Bear	Water Source		39° 55.091' N	121° 03.740' W
Claremont-Bear	Water Source		39° 55.109' N	121° 03.761' W
Claremont-Bear	Water Source		39° 55.083' N	121° 03.769' W
Claremont-Bear	Water Source		39° 55.092' N	121° 03.758' W
Claremont-Bear	Water Source		39° 55.075' N	121° 03.733' W
Claremont-Bear	Water Source		39° 55.054' N	121° 03.768' W
Claremont-Bear	Water Source		39° 54.998' N	121° 03.764' W
Claremont-Bear	Water Source		39° 54.829' N	121° 03.808' W
Claremont-Bear	Water Source		39° 55.134' N	121° 03.846' W
Claremont-Bear	Water Source		39° 54.125' N	121° 01.500' W
Claremont-Bear	Dip Site	Charlie Dip	39° 35.039' N	121° 06.629' W
Claremont-Bear	Dip Site	Bullards Dip	39° 25.450' N	121° 08.933' W
Claremont-Bear	Dip Site	Forbestown Dip	39° 33.096' N	121° 12.573' W
Claremont-Bear	Drop Point	DP-25	39° 31.456' N	121° 16.973' W
Claremont-Bear	Dip Site	Forebay Dip	39° 53.360' N	121° 16.929' W
Claremont-Bear	Helispot	H-5	39° 53.424' N	121° 12.883' W
Claremont-Bear	Drop Point	DP-75	39° 51.893' N	121° 13.366' W
Claremont-Bear	Drop Point	DP-73	39° 52.095' N	121° 10.448' W
Claremont-Bear	Drop Point	DP-27	39° 30.937' N	121° 15.823' W
Claremont-Bear	Drop Point	DP-150	39° 51.338' N	121° 10.827' W
Claremont-Bear	Drop Point	DP-151	39° 49.558' N	121° 7.750' W