

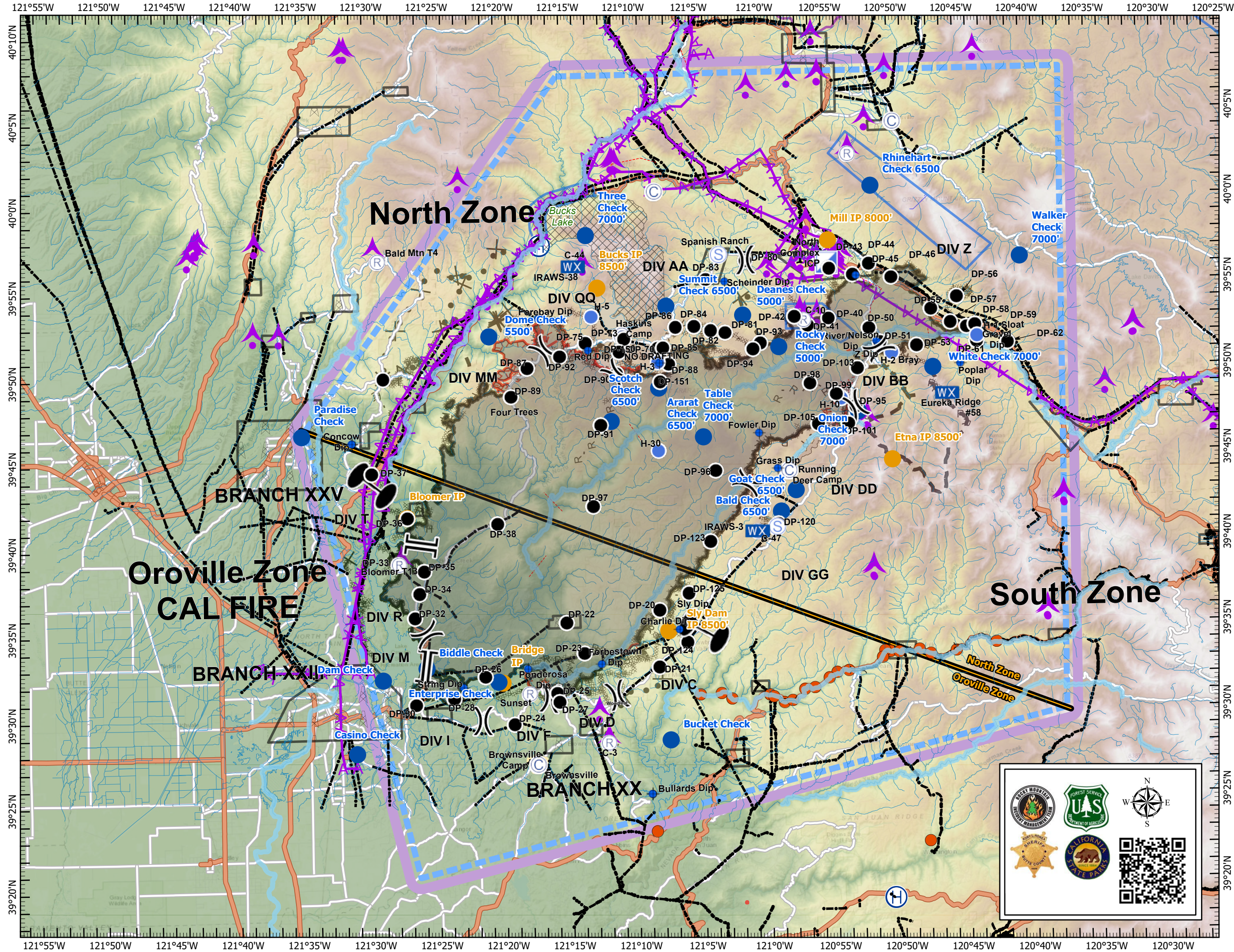
Pilot Map

North Complex
CA-PNF-001308

9-29-20

- Zone Break
- Division Break
- Branch Break
- Camp
- Dip Site
- Drop Point
- Helispot
- Incident Command Post
- Mobile Weather Unit
- Repeater
- Staging Area
- Check Point
- Intial Point
- Aerial Hazard
- Wilderness
- Powerline
- Telephone wires
- Airport
- Helibase
- Hangglide/Paraglide
- Jettison
- Powerline
- Turbulence
- Uncontrolled Fire Edge
- Contained Line
- Completed Dozer Line
- Completed Hand Line
- Road as Completed Line
- Access or Improved Road
- Completed Plow Line
- Active Burnout
- Proposed Dozer Line
- Planned Fire Line
- Other
- Wildfire Daily Fire Perimeter

0 3.25 6.5 13 Miles



IncidentName	FeatureCategory	Label	LatWGS84_DDM	LongWGS84_DDM
Claremont-Bear	Branch Break		N39 33.134	W121° 25.807
Claremont-Bear	Branch Break		N39 40.265	W121° 26.082
Claremont-Bear	Camp	Taylorville Spike	N40 04.51088666	W120 49.71536076
Claremont-Bear	Camp	Haskins Spike	N39 52.30499999	W121° 10.58199999
Claremont-Bear	Camp	Running Deer Camp	N39 44.23434993	W120 58.10521554
Claremont-Bear	Camp	Brownsville Camp	N39 27.30000001	W121° 17.50000000
Claremont-Bear	Camp	Gasner Bar	N40 00.67200000	W121° 07.92600000
Claremont-Bear	Dip Site	East Quincy Dip	N39 55.51999998	W120 52.72000002
Claremont-Bear	Dip Site	River/Nelson Dip	N39 51.67000002	W120 51.27000000
Claremont-Bear	Dip Site	Z Dip	N39 51.55999998	W120 51.04000002
Claremont-Bear	Dip Site	Fowler Dip	N39 46.43670042	W121° 00.31732968
Claremont-Bear	Dip Site	Gravel Dip	N39 51.41428638	W120 43.38350928
Claremont-Bear	Dip Site	Poplar Dip	N39 50.25300498	W120 44.95700136
Claremont-Bear	Dip Site	Scheinder Dip	N39 55.32735936	W121° 02.69987465
Claremont-Bear	Dip Site	Quarry Dip	N39 50.63577270	W121° 07.79414728
Claremont-Bear	Dip Site	Concow Dip	N39 46.20000001	W121° 31.21999995
Claremont-Bear	Dip Site	Grass Dip	N39 44.35783056	W120 58.96211287
Claremont-Bear	Dip Site	Bullards Dip	N39 25.45000001	W121° 08.93333334
Claremont-Bear	Dip Site	Forebay Dip	N39 53.36000001	W121° 16.92999998
Claremont-Bear	Dip Site	String Dip	N39 31.860	W121° 23.030
Claremont-Bear	Dip Site	Concow Dip	N39 46.200	W121° 31.220
Claremont-Bear	Dip Site	Rancharosa Dip	N39 32.890	W121° 18.160
Claremont-Bear	Dip Site	Charlie Dip	N39 35.040	W121° 6.630
Claremont-Bear	Dip Site	Bullards Dip	N39 25.450	W121° 8.933
Claremont-Bear	Dip Site	Forbestown Dip	N39 33.096	W121° 12.573
Claremont-Bear	Dip Site	Red Dip	N39 51.45000000	W121° 13.16000004
Claremont-Bear	Division Break		N39 56.55418734	W121° 01.07972284
Claremont-Bear	Division Break		N39 46.94515032	W120 53.51490247
Claremont-Bear	Division Break		N39 50.07149966	W121° 11.03028020
Claremont-Bear	Division Break		N39 51.49378631	W121° 16.47043059
Claremont-Bear	Division Break		N39 43.54698970	W121° 01.16279924
Claremont-Bear	Division Break		N39 51.98330938	W120 44.03418542
Claremont-Bear	Division Break		N39 31.146	W121° 16.538
Claremont-Bear	Division Break		N39 35.087	W121° 25.773
Claremont-Bear	Division Break		N39 29.901	W121° 21.615
Claremont-Bear	Division Break		N39 31.266	W121° 11.445
Claremont-Bear	Drop Point	DP-40	N39 53.07212124	W120 54.87357408
Claremont-Bear	Drop Point	DP-50	N39 52.45701702	W120 51.81195714
Claremont-Bear	Drop Point	DP-45	N39 56.23059102	W120 51.72971802
Claremont-Bear	Drop Point	DP-55	N39 53.50315396	W120 47.08615194
Claremont-Bear	Drop Point	DP-88	N39 50.57897694	W121° 07.07084898
Claremont-Bear	Drop Point	DP-86	N39 52.71620430	W121° 06.51414300
Claremont-Bear	Drop Point	DP-83	N39 55.48950888	W121° 04.13351566
Claremont-Bear	Drop Point	DP-80	N39 56.55415902	W121° 01.07964162
Claremont-Bear	Drop Point	DP-44	N39 55.60324944	W120 52.97197494
Claremont-Bear	Drop Point	DP-51	N39 51.61604202	W120 50.99886258
Claremont-Bear	Drop Point	DP-41	N39 52.67875176	W120 56.46316164
Claremont-Bear	Drop Point	DP-46	N39 55.40343384	W120 50.05323222
Claremont-Bear	Drop Point	DP-56	N39 54.19696902	W120 45.09963798
Claremont-Bear	Drop Point	DP-57	N39 52.70542416	W120 45.63363954
Claremont-Bear	Drop Point	DP-58	N39 52.42412916	W120 44.40381588
Claremont-Bear	Drop Point	DP-59	N39 52.53342738	W120 43.76998500
Claremont-Bear	Drop Point	DP-62	N39 51.46015860	W120 41.32024902
Claremont-Bear	Drop Point	DP-93	N39 51.70330974	W121° 00.09103950
Claremont-Bear	Drop Point	DP-61	N39 51.56900892	W120 43.66672578
Claremont-Bear	Drop Point	DP-94	N39 51.36168660	W121° 00.65315418
Claremont-Bear	Drop Point	DP-81	N39 52.35382254	W121° 02.73341676
Claremont-Bear	Drop Point	DP-82	N39 52.48805514	W121° 03.84083736
Claremont-Bear	Drop Point	DP-84	N39 52.75031094	W121° 05.10090390
Claremont-Bear	Drop Point	DP-90	N39 50.07149964	W121° 11.03800494
Claremont-Bear	Drop Point	DP-42	N39 53.21050230	W120 57.45293634
Claremont-Bear	Drop Point	DP-53	N39 51.38888567	W120 48.22826211
Claremont-Bear	Drop Point	DP-43	N39 55.99094689	W120 54.75278923
Claremont-Bear	Drop Point	DP-91	N39 47.07896566	W121° 12.31162201
Claremont-Bear	Drop Point	DP-97	N39 42.33780374	W121° 13.00272389
Claremont-Bear	Drop Point	DP-95	N39 47.90164399	W120 52.94039876

IncidentName	FeatureCategory	Label	LatWGS84_DDM	LongWGS84_DDM
Claremont-Bear	Drop Point	DP-96	N39 44.29750441	W121° 03.66220133
Claremont-Bear	Drop Point	DP-120	N39 41.13679828	W120 58.97915522
Claremont-Bear	Drop Point	DP-124	N39 34.29474808	W121° 06.06226410
Claremont-Bear	Drop Point	DP-38	N39 41.41226553	W121° 20.27320250
Claremont-Bear	Drop Point	DP-99	N39 48.64300001	W120 54.39999998
Claremont-Bear	Drop Point	DP-70	N39 51.52473466	W121° 07.88549075
Claremont-Bear	Drop Point	DP-123	N39 40.15529827	W121° 04.15790703
Claremont-Bear	Drop Point	DP-101	N39 46.94515032	W120 53.51490247
Claremont-Bear	Drop Point	DP-98	N39 49.28954391	W120 56.37605921
Claremont-Bear	Drop Point	DP-92	N39 51.13434880	W121° 15.33593908
Claremont-Bear	Drop Point	DP-85	N39 51.52518001	W121° 07.47990000
Claremont-Bear	Drop Point	DP-125	N39 37.15624018	W121° 05.89874869
Claremont-Bear	Drop Point	DP-89	N39 48.82772220	W121° 19.07736092
Claremont-Bear	Drop Point	DP-105	N39 46.90888899	W120 55.81403763
Claremont-Bear	Drop Point	DP-87	N39 50.49000000	W121° 17.83000000
Claremont-Bear	Drop Point	DP-75	N39 51.89300002	W121° 13.36699999
Claremont-Bear	Drop Point	DP-73	N39 52.09599999	W121° 10.44800001
Claremont-Bear	Drop Point	DP-108	N39 50.13366214	W120 52.74466786
Claremont-Bear	Drop Point	DP-30	N39 30.889	W121° 26.641
Claremont-Bear	Drop Point	DP-34	N39 37.377	W121° 26.267
Claremont-Bear	Drop Point	DP-26	N39 32.475	W121° 21.378
Claremont-Bear	Drop Point	DP-24	N39 29.662	W121° 19.226
Claremont-Bear	Drop Point	DP-22	N39 35.564	W121° 15.170
Claremont-Bear	Drop Point	DP-36	N39 41.817	W121° 27.093
Claremont-Bear	Drop Point	DP-28	N39 31.242	W121° 23.773
Claremont-Bear	Drop Point	DP-32	N39 35.967	W121° 26.652
Claremont-Bear	Drop Point	DP-21	N39 32.889	W121° 8.210
Claremont-Bear	Drop Point	DP-20	N39 36.201	W121° 8.122
Claremont-Bear	Drop Point	DP-33	N39 39.127	W121° 27.828
Claremont-Bear	Drop Point	DP-35	N39 38.700	W121° 25.877
Claremont-Bear	Drop Point	DP-23	N39 33.760	W121° 13.881
Claremont-Bear	Drop Point	DP-37	N39 44.429	W121° 29.762
Claremont-Bear	Drop Point	DP-25	N39 31.457	W121° 15.973
Claremont-Bear	Drop Point	DP-27	N39 30.937	W121° 15.823
Claremont-Bear	Drop Point	DP-150	N39 51.33799998	W121° 10.82700000
Claremont-Bear	Drop Point	DP-151	N39 49.58800002	W121° 07.75000002
Claremont-Bear	Drop Point	DP-39	N39 49.97200002	W121° 28.78000002
Claremont-Bear	Fire Station	Madon/Walley Fire Station	N39 56.32198508	W121° 03.53249121
Claremont-Bear	Hazard	Four Open Mine Shafts	N39 45.02734787	W121° 09.03516861
Claremont-Bear	Helispot	H-2 Bay	N39 50.99157516	W120 50.12378628
Claremont-Bear	Helispot	H-1 Scat	N39 51.89069005	W120 43.62766103
Claremont-Bear	Helispot	H-3	N39 50.69999929	W121° 07.89199991
Claremont-Bear	Helispot	H-10	N39 48.38066239	W120 54.02979052
Claremont-Bear	Helispot	H-30	N39 45.51699998	W121° 07.96000002
Claremont-Bear	Helispot	H-5	N39 53.42499999	W121° 12.88300001
Claremont-Bear	Incident Command Post	North Complex ICP	N39 56.34543456	W120 54.90268752
Claremont-Bear	Mobile Weather Unit	Eureka Ridge #58	N39 48.52666665	W120 45.98333336
Claremont-Bear	Mobile Weather Unit	RAWS # 38	N39 56.36721380	W121° 14.19615943
Claremont-Bear	Mobile Weather Unit	IRAWS-3	N39 40.71000000	W121° 00.59333998
Claremont-Bear	Repeater	C-10	N39 52.99864716	W120 56.75246190
Claremont-Bear	Repeater	C-26	N40 02.65648158	W120 53.16962934
Claremont-Bear	Repeater	C-44	N39 56.31790046	W121° 14.15819988
Claremont-Bear	Repeater	C-47	N39 40.70150732	W121° 00.55329158
Claremont-Bear	Repeater	C-3	N39 28.48266970	W121° 12.13610847
Claremont-Bear	Repeater	Bald Mh T4	N39 56.83300001	W121° 29.05399996
Claremont-Bear	Repeater	Sunset	N39 31.436	W121° 18.050
Claremont-Bear	Repeater	Bald Mh T4	N39 56.833	W121° 29.054
Claremont-Bear	Repeater	Boomer T13	N39 39.109	W121° 27.770
Claremont-Bear	Restricted Water Source		N39 51.07152088	W121° 10.80729332
Claremont-Bear	Staging Area	Heavy Equipment	N39 40.98819306	W120 59.08742559
Claremont-Bear	Staging Area	Spanish Ranch	N39 56.91799999	W121° 03.13200000
Claremont-Bear	Water Source	Back-In Draft Only	N39 41.64419369	W120 58.08823345
Claremont-Bear	Water Source	Toom's Boat Ramp	N39 43.34088516	W120 58.92314702
Claremont-Bear	Zone Break		N39 34.944	W121° 4.771
Claremont-Bear	Zone Break		N39 43.796	W121° 29.694