

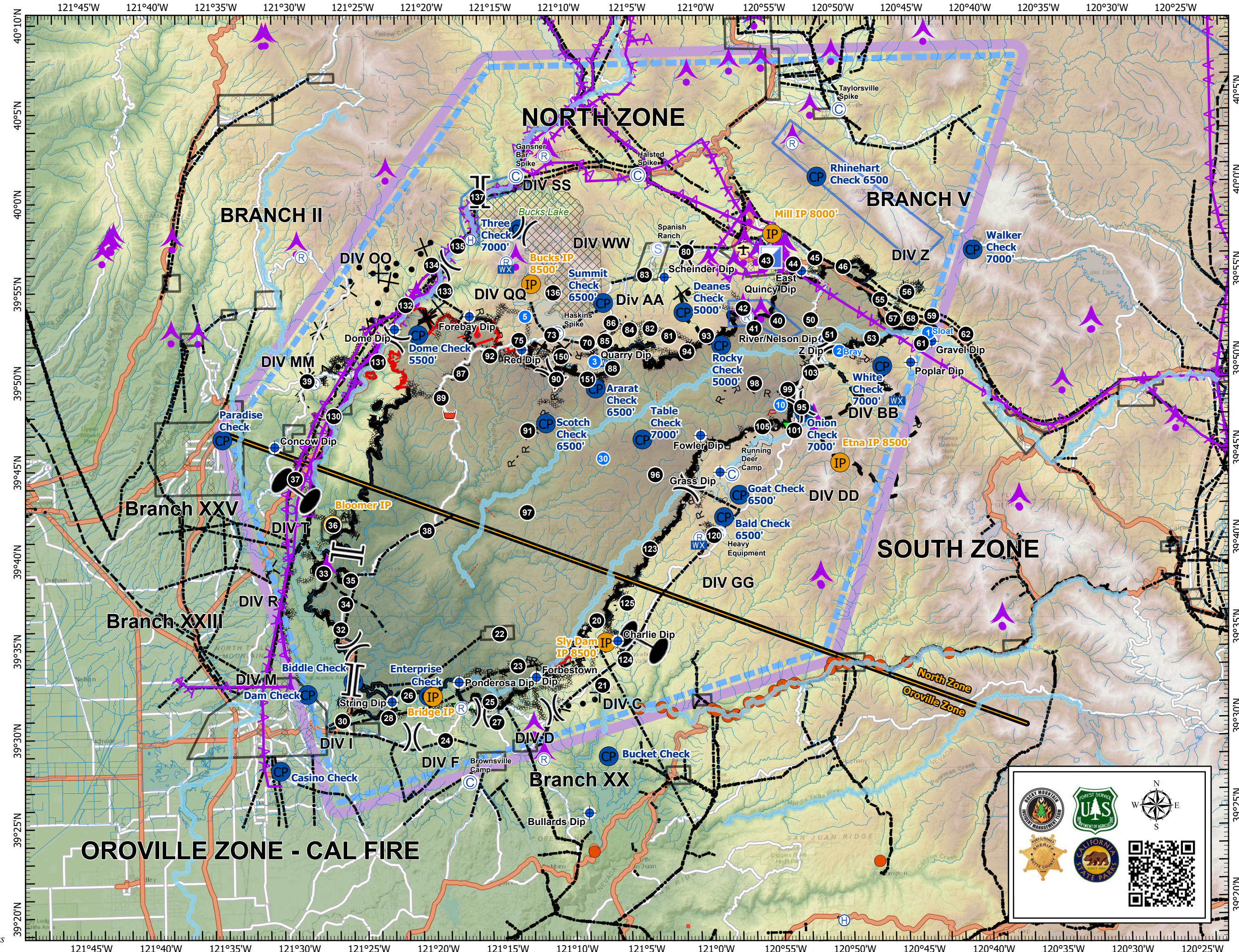
Pilot Map

North Complex

CA-PNF-001308

10-3-20

- Zone Break
- Division Break
- Branch Break
- Camp
- Dip Site
- Drop Point
- Helispot
- Incident Command Post
- Mobile Weather Unit
- Repeater
- Retardant/Mud Pit
- Staging Area
- Check Point
- Initial Point
- Airport
- Helibase
- Aerial cable
- Bridge
- Tower
- Uncontrolled Fire Edge
- Contained Line
- Completed Dozer Line
- Completed Hand Line
- Road as Completed Line
- Access or Improved Road
- Completed Plow Line
- Active Burnout
- Proposed Dozer Line
- Planned Fire Line
- Other
- Aerial Hazard
- Powerline
- Telephone wires
- Wildfire Daily Fire Perimeter
- Hangglide/Paraglide
- Jettison
- Powerline
- Turbulence
- Wilderness



Logos for Wildfire Management, Forest Service, Sheriff's Office, and State Parks. Includes a compass rose and a QR code.

IncidentName	FeatureCategory	Label	LatWGS84_DDM	LongWGS84_DDM	IncidentName	FeatureCategory	Label	LatWGS84_DDM	LongWGS84_DDM	IncidentName	FeatureCategory	Label	LatWGS84_DDM	LongWGS84_DDM
Claremont-Bear	Branch Break		N39 33134	W121° 25807	Claremont-Bear	Drop Point	DP-41	N39 5267875176	W120 5646316164	Claremont-Bear	Drop Point	DP-35	N39 38700	W121° 25877
Claremont-Bear	Branch Break		N39 40265	W121° 26082	Claremont-Bear	Drop Point	DP-46	N39 5540343384	W120 5005323222	Claremont-Bear	Drop Point	DP-23	N39 33760	W121° 13881'
Claremont-Bear	Branch Break		N40 0032457084	W121° 1593683790	Claremont-Bear	Drop Point	DP-56	N39 5419696902	W120 4509963798	Claremont-Bear	Drop Point	DP-37	N39 44429	W121° 29762
Claremont-Bear	Camp	Taylorville Spike	N40 0451038666	W120 4971536076	Claremont-Bear	Drop Point	DP-57	N39 5270542416	W120 4563363954	Claremont-Bear	Drop Point	DP-25	N39 31.457	W121° 15973
Claremont-Bear	Camp	Haskins Spike	N39 5230499999	W121° 1058199999	Claremont-Bear	Drop Point	DP-58	N39 5242412916	W120 4440881588	Claremont-Bear	Drop Point	DP-27	N39 30937	W121° 15823
Claremont-Bear	Camp	Ruming Deer Camp	N39 4423434993	W120 5810521554	Claremont-Bear	Drop Point	DP-59	N39 5253342738	W120 4376998500	Claremont-Bear	Drop Point	DP-150	N39 51.33799998	W121° 1082700000
Claremont-Bear	Camp	Browsville Camp	N39 2730000001	W121° 1750000000	Claremont-Bear	Drop Point	DP-62	N39 51.46015860	W120 41.32024902	Claremont-Bear	Drop Point	DP-151	N39 4958800002	W121° 0775000002
Claremont-Bear	Camp	Gansner Bar Spike	N40 0067200000	W121° 0792600000	Claremont-Bear	Drop Point	DP-93	N39 51.70330974	W121° 0009103950	Claremont-Bear	Drop Point	DP-39	N39 4997200002	W121° 2878000002
Claremont-Bear	Camp	Halsted Spike	N40 01.0674591'	W121° 04.4658402	Claremont-Bear	Drop Point	DP-61	N39 51.56900892	W120 4366672578	Claremont-Bear	Drop Point	DP-130	N39 4836818616	W121° 2626486674
Claremont-Bear	Dip Site	East Quincy Dip	N39 5551999998	W120 5272000002	Claremont-Bear	Drop Point	DP-94	N39 51.36168660	W121° 0065315418	Claremont-Bear	Drop Point	DP-132	N39 5405157630	W121° 21.54188232
Claremont-Bear	Dip Site	River/Nelson Dip	N39 51.67000002	W120 51.27000000	Claremont-Bear	Drop Point	DP-81	N39 5235382254	W121° 0273341676	Claremont-Bear	Drop Point	DP-133	N39 5512447866	W121° 19.21604964
Claremont-Bear	Dip Site	Z Dip	N39 51.55999998	W120 51.04000002	Claremont-Bear	Drop Point	DP-82	N39 5248805514	W121° 0384083736	Claremont-Bear	Drop Point	DP-135	N39 5630831046	W121° 1866750774
Claremont-Bear	Dip Site	Fowler Dip	N39 4643670042	W121° 0031732968	Claremont-Bear	Drop Point	DP-84	N39 5275031094	W121° 0510090390	Claremont-Bear	Drop Point	DP-137	N40 0003194802	W121° 1617490110
Claremont-Bear	Dip Site	Gravel Dip	N39 51.41428638	W120 4338350928	Claremont-Bear	Drop Point	DP-90	N39 5007149964	W121° 11.03800494	Claremont-Bear	Drop Point	DP-131	N39 5089715778	W121° 2361447624
Claremont-Bear	Dip Site	Roplar Dip	N39 5025300498	W120 4495700136	Claremont-Bear	Drop Point	DP-42	N39 5321030230	W120 57.45298634	Claremont-Bear	Drop Point	DP-134	N39 5598675786	W121° 1895639340
Claremont-Bear	Dip Site	Scheinder Dip	N39 5532735936	W121° 0269987465	Claremont-Bear	Drop Point	DP-53	N39 51.38885567	W120 4822826211'	Claremont-Bear	Drop Point	DP-136	N39 5443218672	W121° 11.51343348
Claremont-Bear	Dip Site	Quarry Dip	N39 5063577270	W121° 0779414728	Claremont-Bear	Drop Point	DP-43	N39 5599094689	W120 5475278925	Claremont-Bear	Fire Station	MacbWalley Fire Station	N39 5632198508	W121° 0353249121'
Claremont-Bear	Dip Site	Grass Dip	N39 4435783056	W120 5896211287	Claremont-Bear	Drop Point	DP-91	N39 4707895566	W121° 1231162201'	Claremont-Bear	Hazard	Four Open Mine Shafts	N39 4502734787	W121° 0908516861'
Claremont-Bear	Dip Site	Forebay Dip	N39 5336000001	W121° 1692999998	Claremont-Bear	Drop Point	DP-97	N39 4233780374	W121° 1300272389	Claremont-Bear	Helispot	H-2 Bray	N39 5099157516	W120 5012378628
Claremont-Bear	Dip Site	String Dip	N39 31.860	W121° 23030	Claremont-Bear	Drop Point	DP-95	N39 4790164399	W120 5294039876	Claremont-Bear	Helispot	H-1 Sloat	N39 51.89069005	W120 4362766103
Claremont-Bear	Dip Site	Concow Dip	N39 46200	W121° 31.220	Claremont-Bear	Drop Point	DP-96	N39 4429750441'	W121° 0366220133	Claremont-Bear	Helispot	H-3	N39 5069999969	W121° 0789199991'
Claremont-Bear	Dip Site	Ponderosa Dip	N39 32890	W121° 18160	Claremont-Bear	Drop Point	DP-120	N39 41.13679828	W120 5897915522	Claremont-Bear	Helispot	H-10	N39 4838066239	W120 5402979052
Claremont-Bear	Dip Site	Charlie Dip	N39 35040	W121° 6630	Claremont-Bear	Drop Point	DP-124	N39 3429474805	W121° 0606226410	Claremont-Bear	Helispot	H-30	N39 4551699998	W121° 0796000002
Claremont-Bear	Dip Site	Bullards Dip	N39 25450	W121° 8933	Claremont-Bear	Drop Point	DP-38	N39 41.41226553	W121° 2027320250	Claremont-Bear	Helispot	H-5	N39 5342499999	W121° 1288300001'
Claremont-Bear	Dip Site	Forbestown Dip	N39 33096	W121° 12573	Claremont-Bear	Drop Point	DP-99	N39 4864300001	W120 5439999998	Claremont-Bear	Incident Command Post	North Complex ICP	N39 5634543456	W120 5490268752
Claremont-Bear	Dip Site	Red Dip	N39 51.45000000	W121° 1316000004	Claremont-Bear	Drop Point	DP-70	N39 51.52473466	W121° 0788549075	Claremont-Bear	Mobile Weather Unit	Eureka Ridge #58	N39 4852666665	W120 4598333336
Claremont-Bear	Dip Site	Dome Dip	N39 52708	W121° 2237865324	Claremont-Bear	Drop Point	DP-123	N39 4015529827	W121° 0415790708	Claremont-Bear	Mobile Weather Unit	RAWS #38	N39 5636721380	W121° 1419615943
Claremont-Bear	Division Break		N39 5655418734	W121° 01.07972284	Claremont-Bear	Drop Point	DP-101	N39 4694515032	W120 5351490247	Claremont-Bear	Mobile Weather Unit	IRAWS-3	N39 4071000000	W121° 0059333998
Claremont-Bear	Division Break		N39 4694515032	W120 5351490247	Claremont-Bear	Drop Point	DP-98	N39 4928554391'	W120 5637605921'	Claremont-Bear	Mobile Weather Unit	IRAWS-16	N39 51.01747266	W121° 0699771294
Claremont-Bear	Division Break		N39 5007149966	W121° 11.03028020	Claremont-Bear	Drop Point	DP-92	N39 51.13434580	W121° 1533528908	Claremont-Bear	Other	Greenville Work Center	N40 0838330872	W120 5648821428
Claremont-Bear	Division Break		N39 51.49378631'	W121° 1647043059	Claremont-Bear	Drop Point	DP-85	N39 51.52518001	W121° 0747990000	Claremont-Bear	Repeater	C-10	N39 5299864716	W120 5675246190
Claremont-Bear	Division Break		N39 4354698970	W121° 01.16279924	Claremont-Bear	Drop Point	DP-125	N39 37.15624018	W121° 0589874869	Claremont-Bear	Repeater	C-47	N40 0265648158	W120 5316962934
Claremont-Bear	Division Break		N39 5403446928	W121° 21.54131504	Claremont-Bear	Drop Point	DP-89	N39 4882772220	W121° 1907736092	Claremont-Bear	Repeater	C-44	N39 5631790046	W121° 1415819988
Claremont-Bear	Division Break		N39 51.98330958	W120 4403418542	Claremont-Bear	Drop Point	DP-105	N39 4690388599	W120 5581403763	Claremont-Bear	Repeater	C-42	N39 4070150732	W121° 0055329158
Claremont-Bear	Division Break		N39 31.146	W121° 16538	Claremont-Bear	Drop Point	DP-87	N39 5049000000	W121° 1783000000	Claremont-Bear	Repeater	C-32	N39 2848266970	W121° 1213610347
Claremont-Bear	Division Break		N39 35087	W121° 25773	Claremont-Bear	Drop Point	DP-75	N39 51.89300002	W121° 1336699999	Claremont-Bear	Repeater	Bald Mt T4	N39 5683300001	W121° 2905399996
Claremont-Bear	Division Break		N39 29901'	W121° 21.615	Claremont-Bear	Drop Point	DP-73	N39 5209599999	W121° 1044800001'	Claremont-Bear	Repeater	Sunset	N39 31.436	W121° 18050
Claremont-Bear	Division Break		N39 31.266	W121° 11.445	Claremont-Bear	Drop Point	DP-103	N39 5013366214	W120 5274466786	Claremont-Bear	Repeater	Bloomer T13	N39 39109	W121° 27770
Claremont-Bear	Division Break		N39 5811348858	W121° 1286290164	Claremont-Bear	Drop Point	DP-30	N39 30889	W121° 26641'	Claremont-Bear	Repeater	C26	N40 0224913420	W121° 11.24468808
Claremont-Bear	Drop Point	DP-40	N39 5307212124	W120 5487357408	Claremont-Bear	Drop Point	DP-34	N39 37377	W121° 26267	Claremont-Bear	Repeater	C-3	N39 4974310386	W121° 2828121510
Claremont-Bear	Drop Point	DP-50	N39 5245701702	W120 51.81195714	Claremont-Bear	Drop Point	DP-26	N39 32475	W121° 21.378	Claremont-Bear	Retardant/Mid Pnt	MFB	N39 4788337446	W121° 1849877034
Claremont-Bear	Drop Point	DP-45	N39 5623039102	W120 51.72971802	Claremont-Bear	Drop Point	DP-24	N39 29662	W121° 19226	Claremont-Bear	Staging Area	Heavy Equipment	N39 4093819306	W120 5908742559
Claremont-Bear	Drop Point	DP-55	N39 5350315596	W120 4708615194	Claremont-Bear	Drop Point	DP-22	N39 35564	W121° 15170	Claremont-Bear	Staging Area	Spanish Ranch	N39 5691799999	W121° 0313200000
Claremont-Bear	Drop Point	DP-88	N39 5057897694	W121° 0707034898	Claremont-Bear	Drop Point	DP-36	N39 41.817	W121° 27093	Claremont-Bear	Water Source	Back-In Draft Only	N39 41.64419369	W120 5808823345
Claremont-Bear	Drop Point	DP-86	N39 5271620430	W121° 0651414300	Claremont-Bear	Drop Point	DP-28	N39 31.242	W121° 23773	Claremont-Bear	Water Source	Toon's Boat Ramp	N39 4334088516	W120 5892314702
Claremont-Bear	Drop Point	DP-83	N39 5548930888	W121° 0413551566	Claremont-Bear	Drop Point	DP-32	N39 35967	W121° 26652	Claremont-Bear	Zone Break		N39 34944	W121° 4771'
Claremont-Bear	Drop Point	DP-80	N39 5655415902	W121° 01.07964162	Claremont-Bear	Drop Point	DP-21	N39 32889	W121° 8210	Claremont-Bear	Zone Break		N39 43796	W121° 29694
Claremont-Bear	Drop Point	DP-44	N39 5560324944	W120 5297197494	Claremont-Bear	Drop Point	DP-20	N39 36201'	W121° 8122					
Claremont-Bear	Drop Point	DP-51	N39 51.61604202	W120 5099886258	Claremont-Bear	Drop Point	DP-33	N39 39127	W121° 27828					