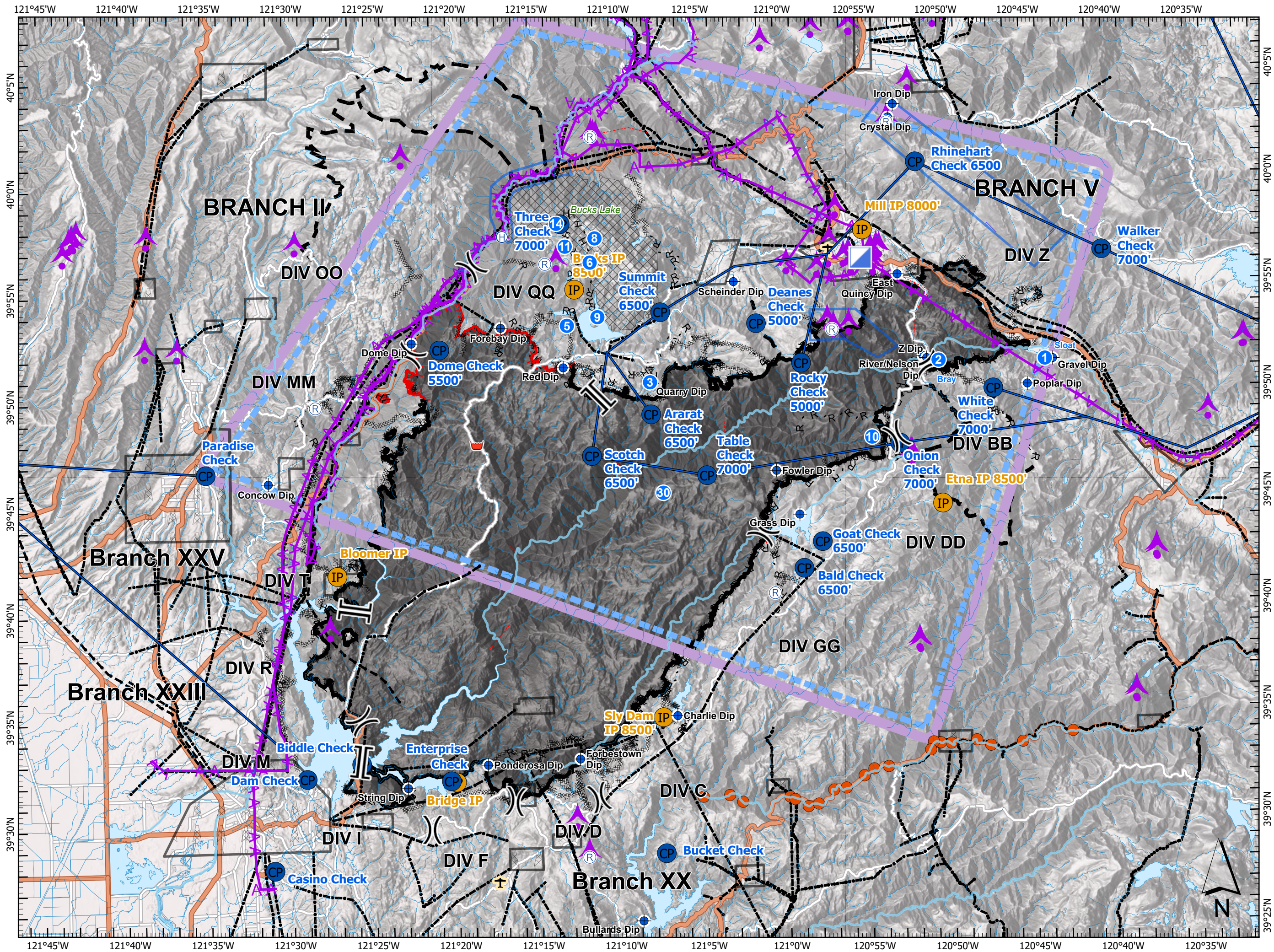
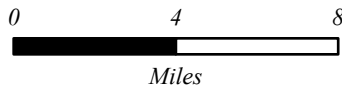


# Pilot Map

North Complex  
CA-PNF-001308  
10-8-20

- Check Point
- Initial Point
- ✈ Airport
- ⊙ Helibase
- Aerial cable
- ⚡ Tower
- HelicopterRoutes\_North
- 🔥 Uncontrolled Fire Edge
- Contained Line
- ⊘ Completed Dozer Line
- H Completed Hand Line
- R Road as Completed Line
- Planned Fire Line
- ⚡ Aerial Hazard
- Powerline
- Telephone wires
- Daily Fire Perimeter
- Powerline
- Turbulence
- ⊘ Wilderness



|                |            |        |                 |                  |
|----------------|------------|--------|-----------------|------------------|
| Claremont-Bear | Drop Point | DP-40  | N39 53.07212124 | W120 54.87357408 |
| Claremont-Bear | Drop Point | DP-50  | N39 52.45701702 | W120 51.81195714 |
| Claremont-Bear | Drop Point | DP-45  | N39 56.23059102 | W120 51.72971802 |
| Claremont-Bear | Drop Point | DP-55  | N39 53.50315596 | W120 47.08615194 |
| Claremont-Bear | Drop Point | DP-88  | N39 50.57897694 | W121 07.07084898 |
| Claremont-Bear | Drop Point | DP-86  | N39 52.71620430 | W121 06.51414300 |
| Claremont-Bear | Drop Point | DP-83  | N39 55.48950858 | W121 04.13551566 |
| Claremont-Bear | Drop Point | DP-44  | N39 55.60324944 | W120 52.97197494 |
| Claremont-Bear | Drop Point | DP-51  | N39 51.61604202 | W120 50.99886258 |
| Claremont-Bear | Drop Point | DP-41  | N39 52.67875176 | W120 56.46316164 |
| Claremont-Bear | Drop Point | DP-46  | N39 55.40343384 | W120 50.05323222 |
| Claremont-Bear | Drop Point | DP-56  | N39 54.19696902 | W120 45.09963798 |
| Claremont-Bear | Drop Point | DP-57  | N39 52.70542416 | W120 45.63363954 |
| Claremont-Bear | Drop Point | DP-58  | N39 52.42412916 | W120 44.40381588 |
| Claremont-Bear | Drop Point | DP-59  | N39 52.53342738 | W120 43.76998500 |
| Claremont-Bear | Drop Point | DP-62  | N39 51.46015860 | W120 41.32024902 |
| Claremont-Bear | Drop Point | DP-93  | N39 51.70330974 | W121 00.09103950 |
| Claremont-Bear | Drop Point | DP-61  | N39 51.56900892 | W120 43.66672578 |
| Claremont-Bear | Drop Point | DP-94  | N39 51.36168660 | W121 00.65315418 |
| Claremont-Bear | Drop Point | DP-81  | N39 52.35382254 | W121 02.73341676 |
| Claremont-Bear | Drop Point | DP-82  | N39 52.48805514 | W121 03.84083736 |
| Claremont-Bear | Drop Point | DP-84  | N39 52.75031094 | W121 05.10090390 |
| Claremont-Bear | Drop Point | DP-90  | N39 50.07149964 | W121 11.03800494 |
| Claremont-Bear | Drop Point | DP-42  | N39 53.21050230 | W120 57.45293634 |
| Claremont-Bear | Drop Point | DP-53  | N39 51.38858567 | W120 48.22826211 |
| Claremont-Bear | Drop Point | DP-43  | N39 55.99094689 | W120 54.75278925 |
| Claremont-Bear | Drop Point | DP-91  | N39 47.07896566 | W121 12.31162201 |
| Claremont-Bear | Drop Point | DP-97  | N39 42.33780374 | W121 13.00272389 |
| Claremont-Bear | Drop Point | DP-95  | N39 47.90164399 | W120 52.94039876 |
| Claremont-Bear | Drop Point | DP-96  | N39 44.29750441 | W121 03.66220133 |
| Claremont-Bear | Drop Point | DP-120 | N39 41.13679828 | W120 58.97915522 |
| Claremont-Bear | Drop Point | DP-124 | N39 34.29474805 | W121 06.06226410 |
| Claremont-Bear | Drop Point | DP-38  | N39 41.41226553 | W121 20.27320250 |
| Claremont-Bear | Drop Point | DP-99  | N39 48.64300001 | W120 54.39999998 |
| Claremont-Bear | Drop Point | DP-70  | N39 51.52473466 | W121 07.88549075 |
| Claremont-Bear | Drop Point | DP-123 | N39 40.15529827 | W121 04.15790703 |
| Claremont-Bear | Drop Point | DP-101 | N39 46.94515032 | W120 53.51490247 |
| Claremont-Bear | Drop Point | DP-98  | N39 49.28954391 | W120 56.37605921 |
| Claremont-Bear | Drop Point | DP-92  | N39 51.13434580 | W121 15.33593908 |
| Claremont-Bear | Drop Point | DP-85  | N39 51.52518001 | W121 07.47990000 |
| Claremont-Bear | Drop Point | DP-125 | N39 37.15624018 | W121 05.89874869 |
| Claremont-Bear | Drop Point | DP-89  | N39 48.82772220 | W121 19.07736092 |
| Claremont-Bear | Drop Point | DP-105 | N39 46.90385899 | W120 55.81403763 |
| Claremont-Bear | Drop Point | DP-87  | N39 50.49000000 | W121 17.83000000 |
| Claremont-Bear | Drop Point | DP-75  | N39 51.89300002 | W121 13.36699999 |

|                |                       |                   |                 |                  |
|----------------|-----------------------|-------------------|-----------------|------------------|
| Claremont-Bear | Drop Point            | DP-73             | N39 52.09599999 | W121 10.44800001 |
| Claremont-Bear | Drop Point            | DP-103            | N39 50.13366214 | W120 52.74466786 |
| Claremont-Bear | Drop Point            | DP-30             | N39 30.8889     | W121 26.641      |
| Claremont-Bear | Drop Point            | DP-34             | N39 37.377      | W121 26.267      |
| Claremont-Bear | Drop Point            | DP-26             | N39 32.475      | W121 21.378      |
| Claremont-Bear | Drop Point            | DP-24             | N39 29.662      | W121 19.226      |
| Claremont-Bear | Drop Point            | DP-22             | N39 35.564      | W121 15.170      |
| Claremont-Bear | Drop Point            | DP-36             | N39 41.817      | W121 27.093      |
| Claremont-Bear | Drop Point            | DP-28             | N39 31.242      | W121 23.773      |
| Claremont-Bear | Drop Point            | DP-32             | N39 35.967      | W121 26.652      |
| Claremont-Bear | Drop Point            | DP-21             | N39 32.889      | W121 8.210       |
| Claremont-Bear | Drop Point            | DP-20             | N39 36.201      | W121 8.122       |
| Claremont-Bear | Drop Point            | DP-33             | N39 39.127      | W121 27.828      |
| Claremont-Bear | Drop Point            | DP-35             | N39 38.700      | W121 25.877      |
| Claremont-Bear | Drop Point            | DP-23             | N39 33.760      | W121 13.881      |
| Claremont-Bear | Drop Point            | DP-37             | N39 44.429      | W121 29.762      |
| Claremont-Bear | Drop Point            | DP-25             | N39 31.457      | W121 15.973      |
| Claremont-Bear | Drop Point            | DP-27             | N39 30.937      | W121 15.823      |
| Claremont-Bear | Drop Point            | DP-150            | N39 51.33799998 | W121 10.82700000 |
| Claremont-Bear | Drop Point            | DP-151            | N39 49.55800002 | W121 07.75000002 |
| Claremont-Bear | Drop Point            | DP-39             | N39 49.97200002 | W121 28.78000002 |
| Claremont-Bear | Drop Point            | DP-130            | N39 48.36818616 | W121 26.26486674 |
| Claremont-Bear | Drop Point            | DP-132            | N39 54.05157630 | W121 21.54188232 |
| Claremont-Bear | Drop Point            | DP-133            | N39 55.12447866 | W121 19.21604964 |
| Claremont-Bear | Drop Point            | DP-135            | N39 56.30831046 | W121 18.66750774 |
| Claremont-Bear | Drop Point            | DP-137            | N40 00.03194802 | W121 16.17490110 |
| Claremont-Bear | Drop Point            | DP-131            | N39 50.89715778 | W121 23.61447624 |
| Claremont-Bear | Drop Point            |                   | N39 47.91813246 | W121 26.89922196 |
| Claremont-Bear | Drop Point            | DP-134            | N39 55.98675786 | W121 18.95639340 |
| Claremont-Bear | Drop Point            | DP-136            | N39 54.43218672 | W121 11.51343348 |
| Claremont-Bear | Drop Point            | DP-139            | N39 53.46222980 | W121 18.72713917 |
| Claremont-Bear | Drop Point            | DP-138            | N39 53.91326680 | W121 16.69047680 |
| Claremont-Bear | Helispot              | H-2 Bray          | N39 50.99157516 | W120 50.12378628 |
| Claremont-Bear | Helispot              | H-1 Sloat         | N39 51.89069005 | W120 43.62766103 |
| Claremont-Bear | Helispot              | H-3               | N39 50.69999969 | W121 07.89199991 |
| Claremont-Bear | Helispot              | H-10              | N39 48.38066239 | W120 54.02979052 |
| Claremont-Bear | Helispot              | H-30              | N39 45.51699998 | W121 07.96000002 |
| Claremont-Bear | Helispot              | H-5               | N39 53.42499999 | W121 12.88300001 |
| Claremont-Bear | Helispot              | H-14              | N39 58.21868032 | W121 13.42394080 |
| Claremont-Bear | Helispot              | H-9               | N39 54.26700002 | W121 11.20800002 |
| Claremont-Bear | Helispot              | H-11              | N39 57.60074838 | W121 12.87273539 |
| Claremont-Bear | Helispot              | H-8               | N39 57.05200000 | W121 11.43999998 |
| Claremont-Bear | Helispot              | H-6               | N39 56.36700002 | W121 11.41700002 |
| Claremont-Bear | Incident Command Post | North Complex ICP | N39 56.34543456 | W120 54.90268752 |