

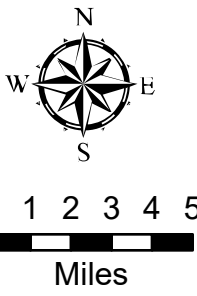
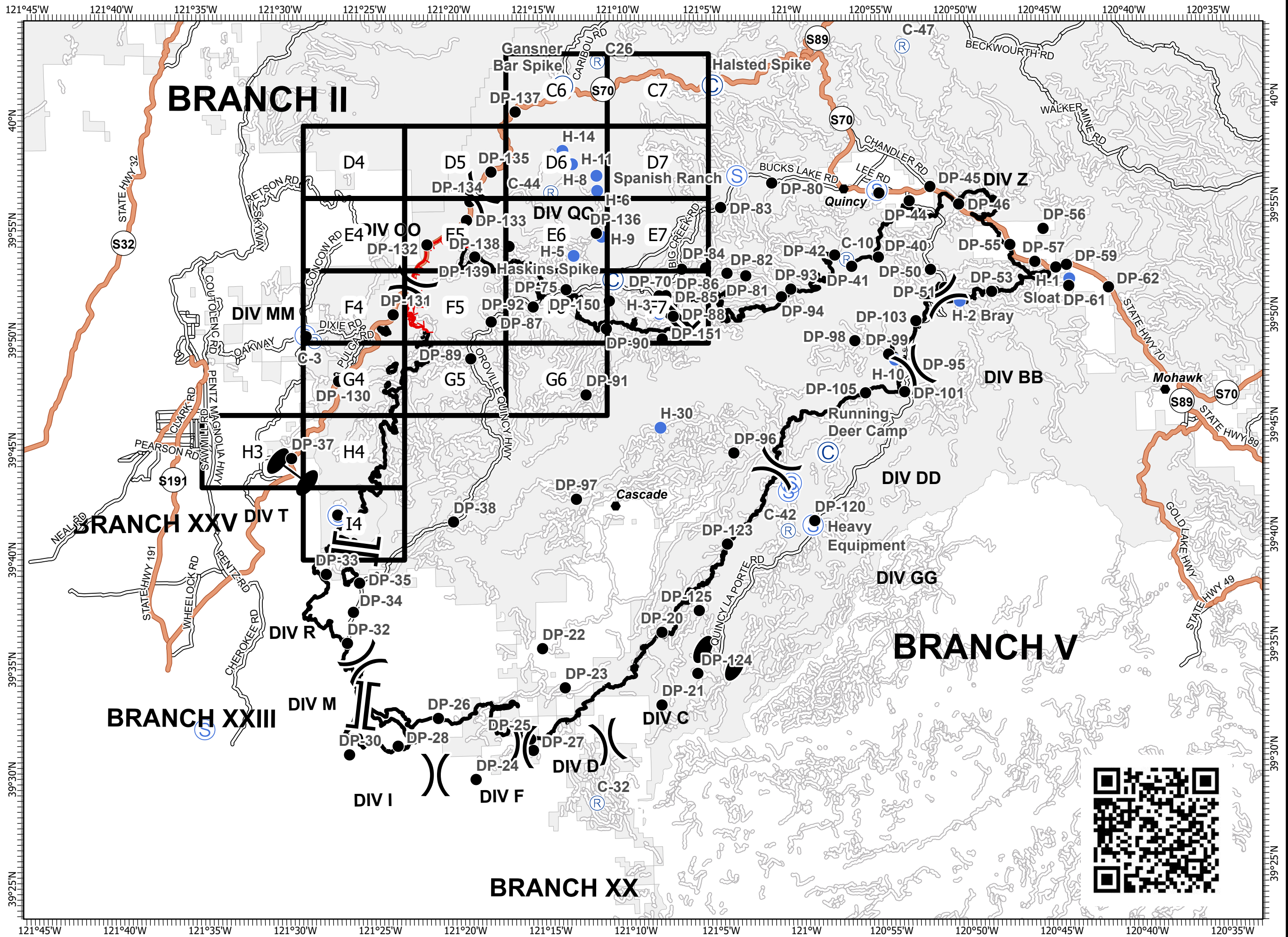
IAP Map Pack

Branch II Index

North Complex
CA-PNF-001308
October 15, 2020



- Camp
- Drop Point
- Helispot
- Repeater
- Staging Area
- Division Break
- Branch Break
- Zone Break
- Uncontrolled Fire Edge
- Contained Line

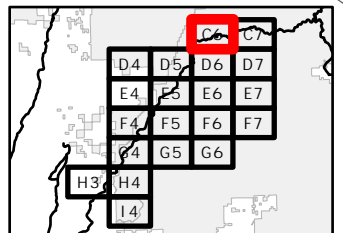
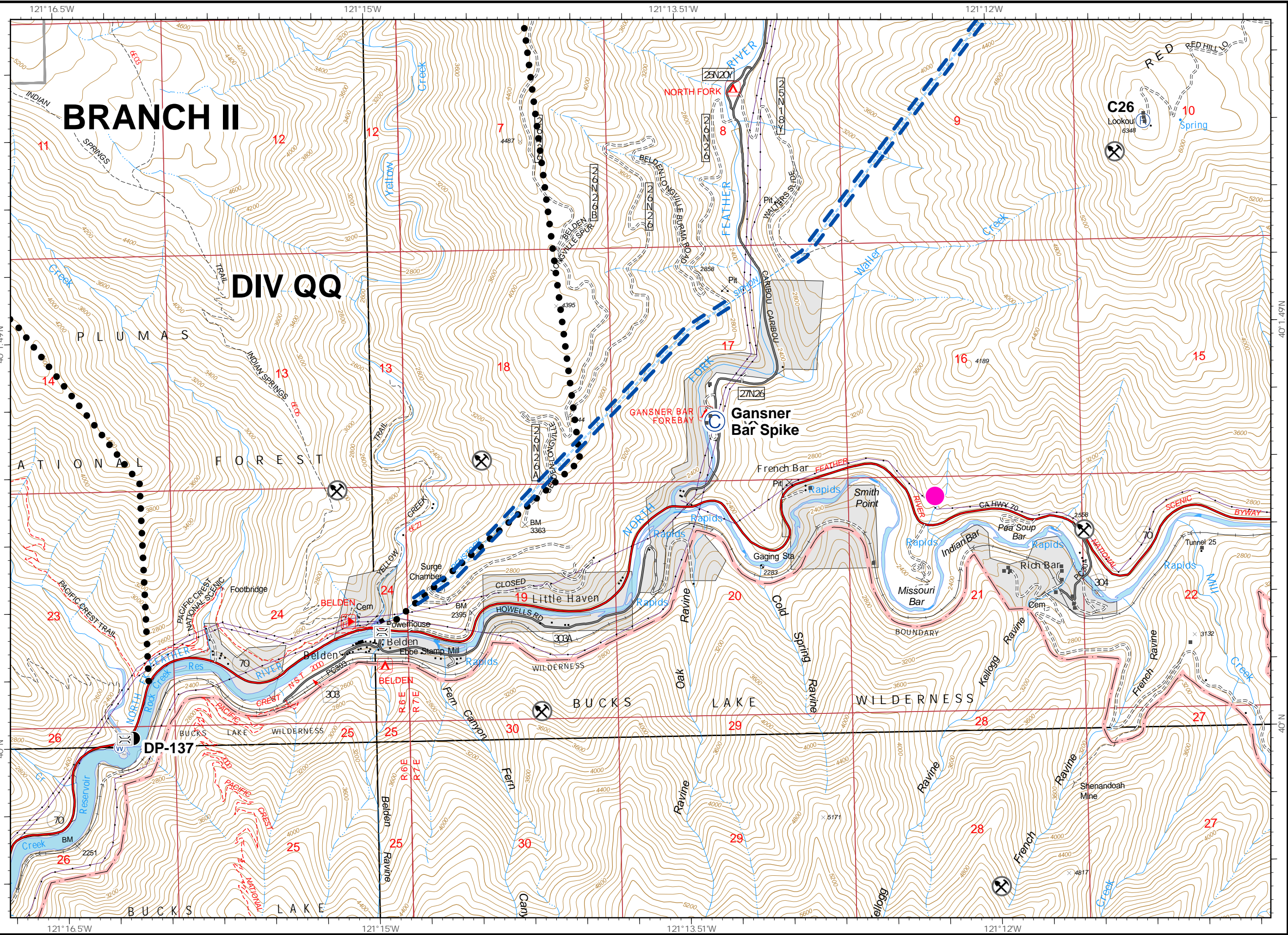


IAP Map Pack

North Complex
CA-PNF-001308
October 15, 2020
Branch II

Index Page: C6

- Bridge
- Camp
- Drop Point
- Repeater
- Water Source
- Planned Secondary Line
- Building Footprint
- Mne
- MANDATORY EXCLUSION AREA
- Penstocks

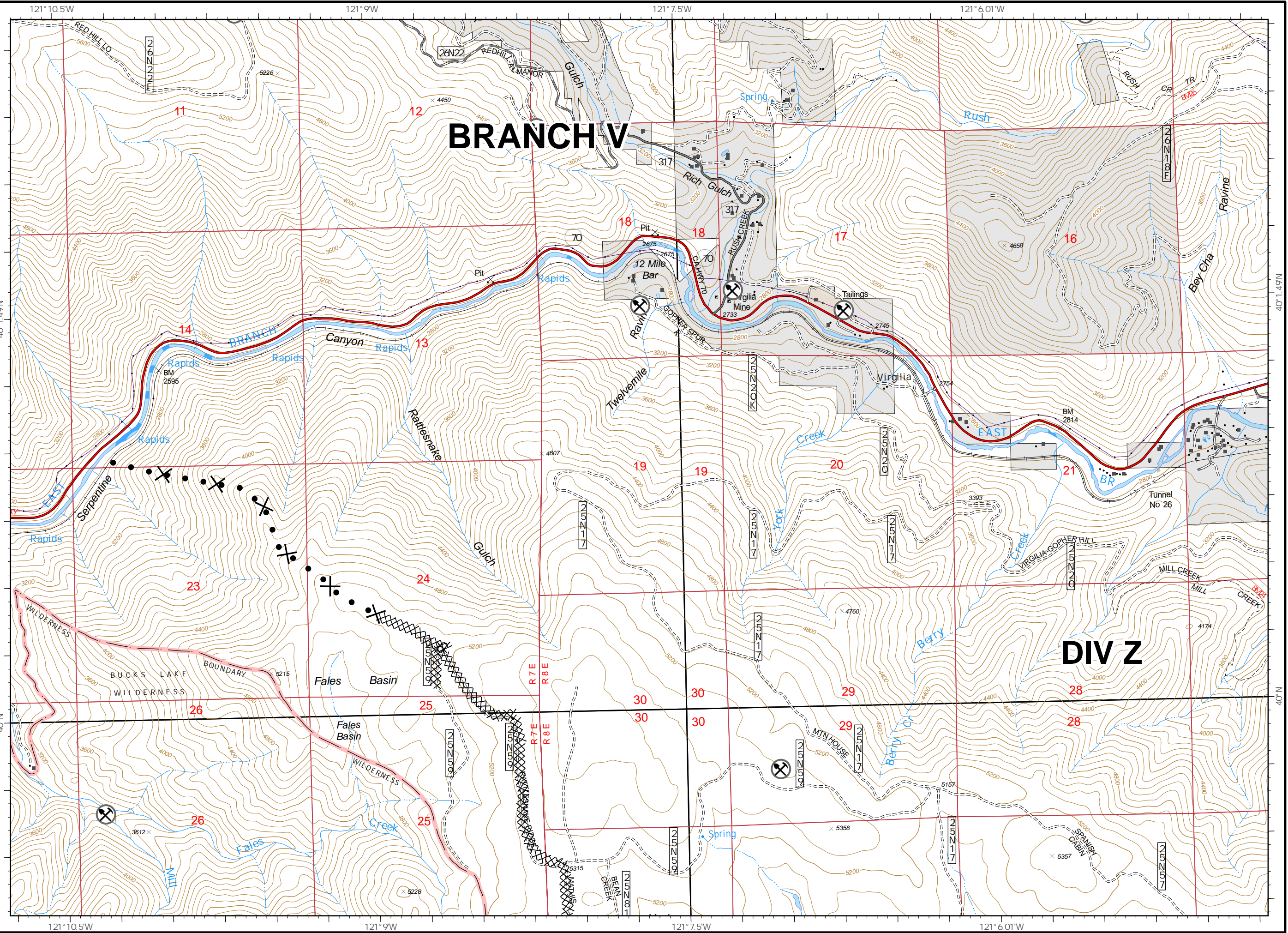


IAP Map Pack

North Complex
CA-PNF-001308
October 15, 2020
Branch II

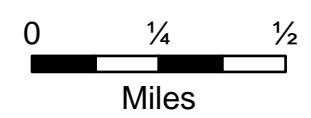
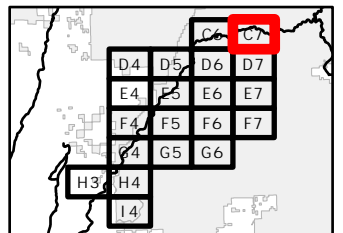
Index Page: C7

- ⊗⊗ Completed Dozer Line
- ⊗• Proposed Dozer Line
- Building Footprint
- ⊗ Mine



BRANCH V

DIV Z

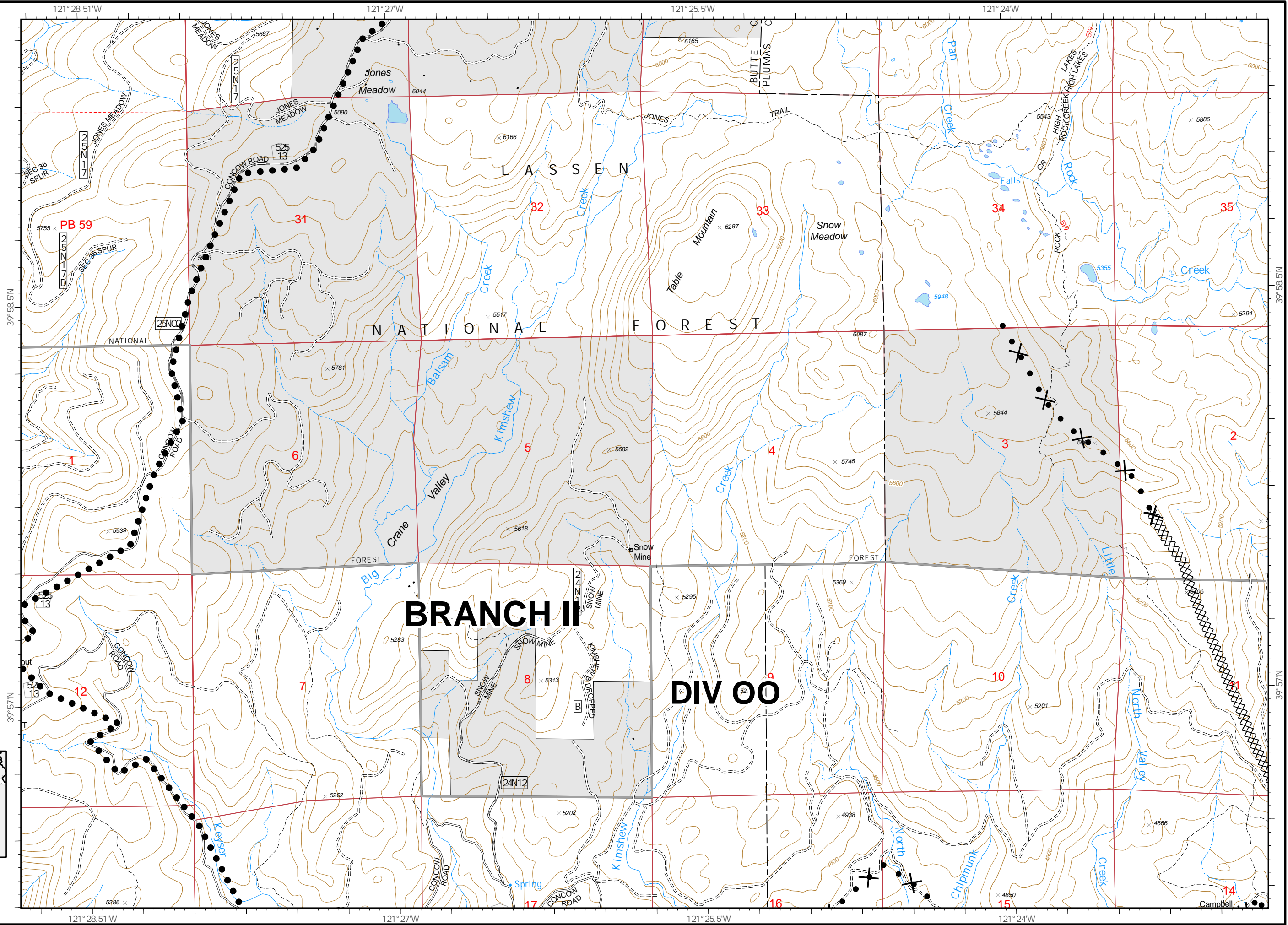


IAP Map Pack

North Complex
CA-PNF-001308
October 15, 2020
Branch II

Index Page: D4

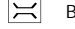









- XX XX Completed Dozer Line
- X• Proposed Dozer Line
- Planned Secondary Line

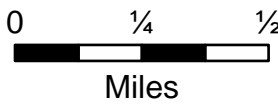
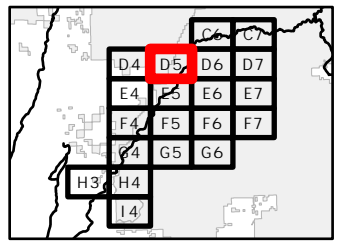
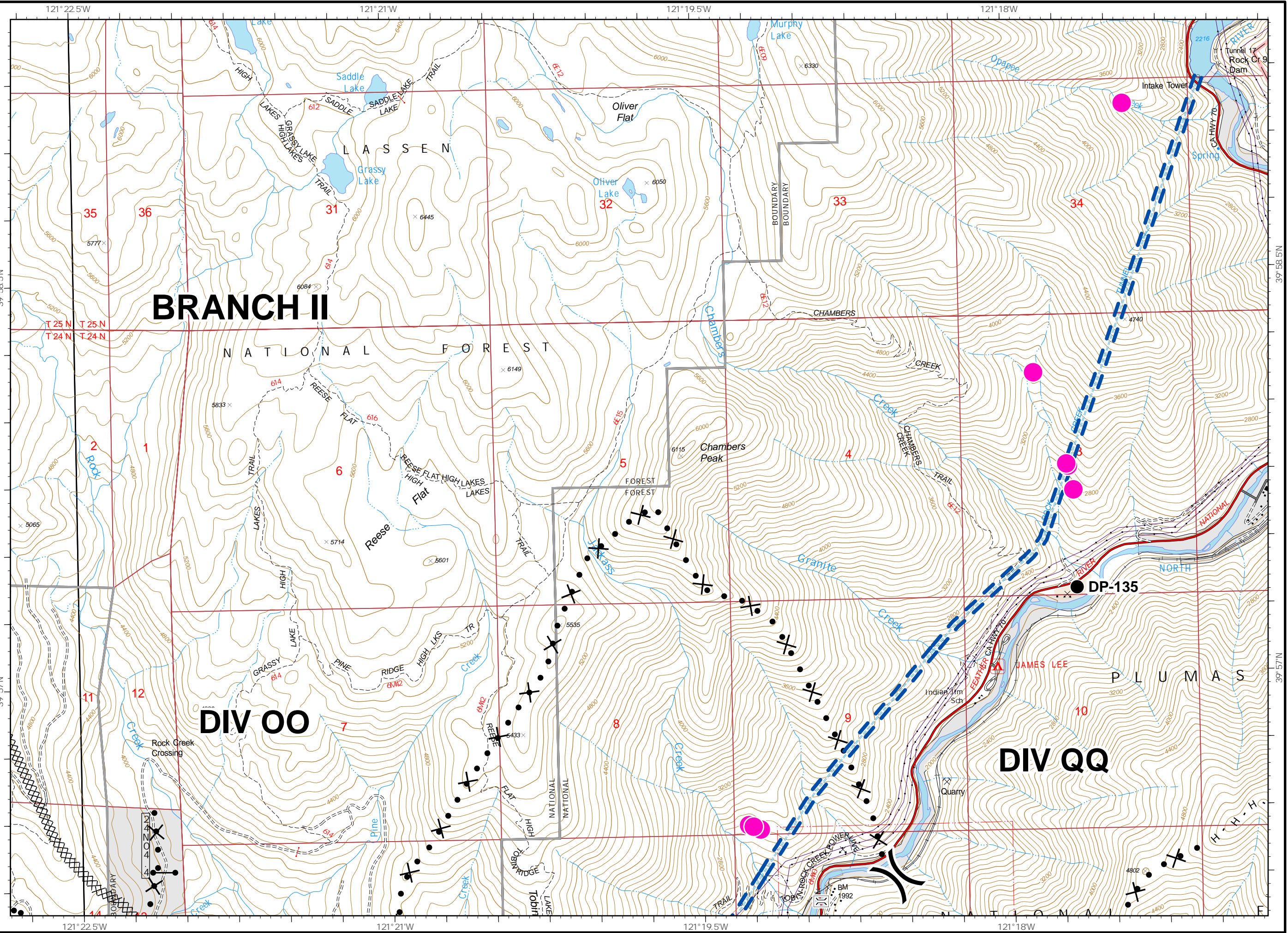


IAP Map Pack

North Complex
CA-PNF-001308
October 15, 2020
Branch II

Index Page: D5

-  Bridge
-  Drop Point
-  Division Break
-  Completed Dozer Line
-  Completed Hand Line
-  Proposed Dozer Line
-  SPI Gate
-  Hazmat
-  MANDATORY EXCLUSION AREA
-  Penstocks

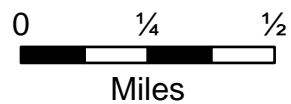
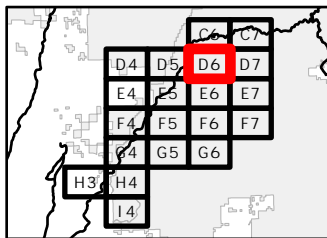
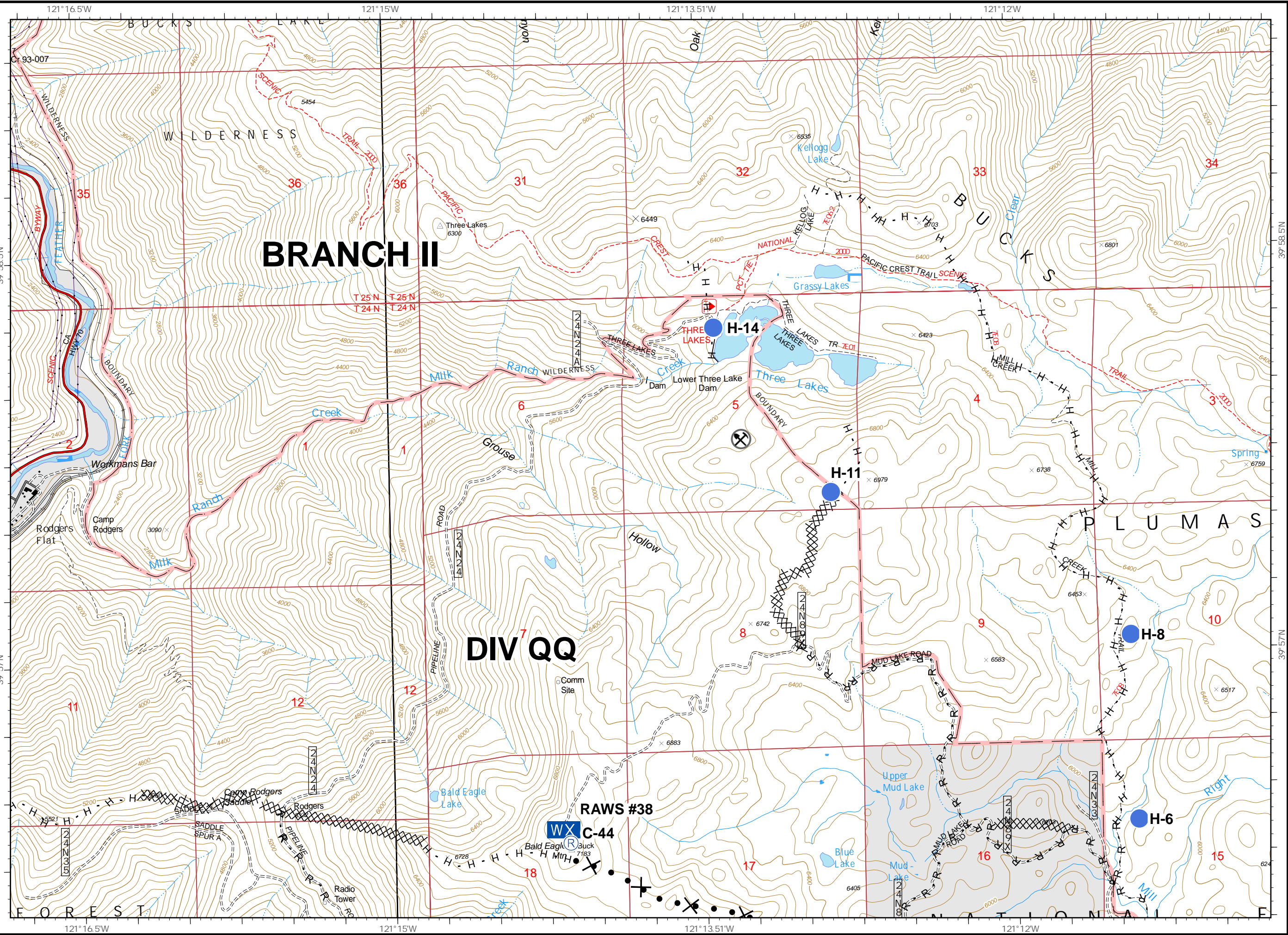


IAP Map Pack

North Complex
CA-PNF-001308
October 15, 2020
Branch II

Index Page: D6

- Helispot
- Repeater
- Mobile Weather Unit
- Completed Dozer Line
- Completed Hand Line
- Road as Completed Line
- Proposed Dozer Line
- Mine

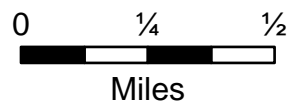
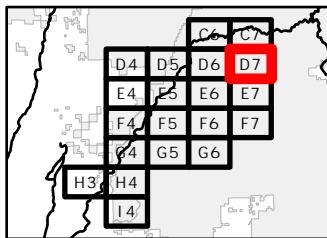
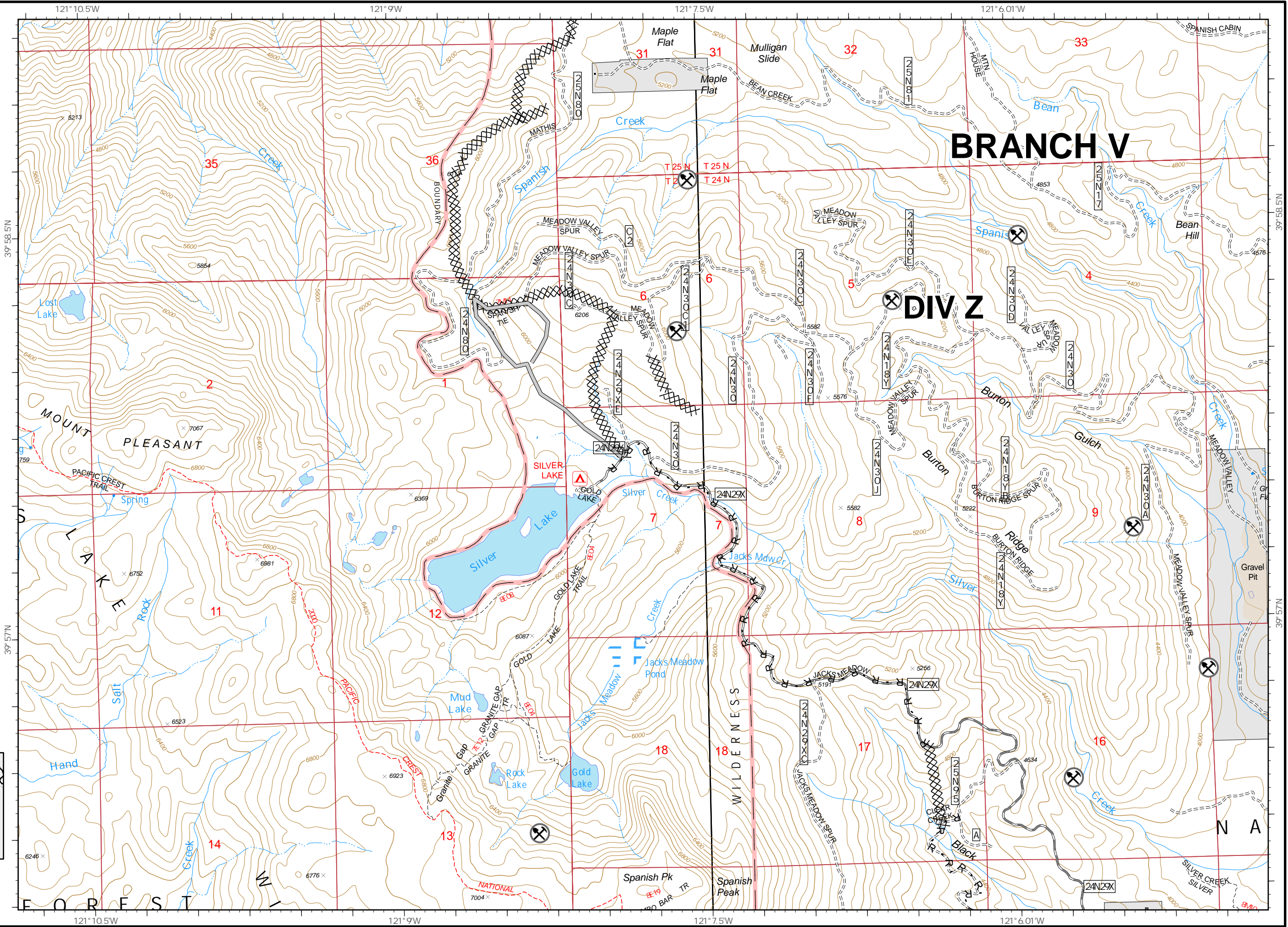


IAP Map Pack

North Complex
CA-PNF-001308
October 15, 2020
Branch II

Index Page: D7

- ⊗ ⊗ Completed Dozer Line
- R Road as Completed Line
- Access or Improved Road
- Building Footprint
- ⊗ Mne

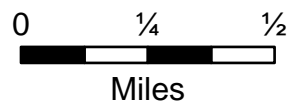
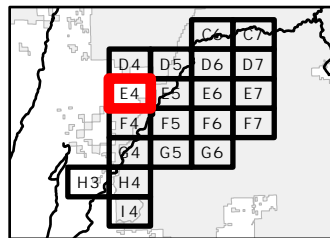
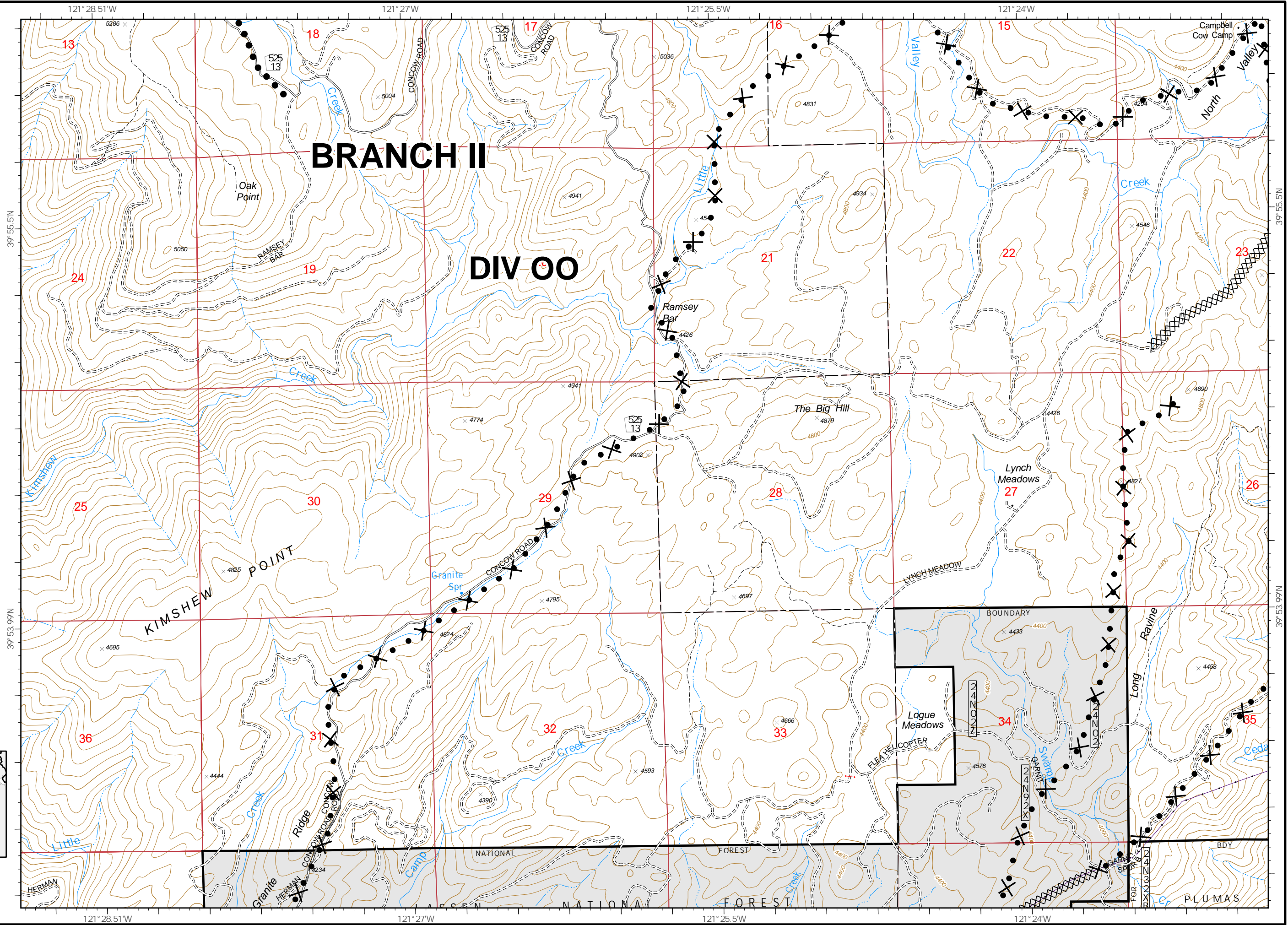


IAP Map Pack

North Complex
CA-PNF-001308
October 15, 2020
Branch II

Index Page: E4

- XX Completed Dozer Line
- X• Proposed Dozer Line
- Planned Secondary Line

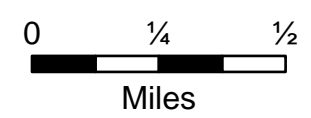
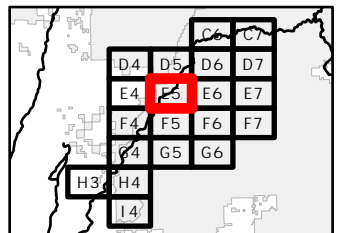
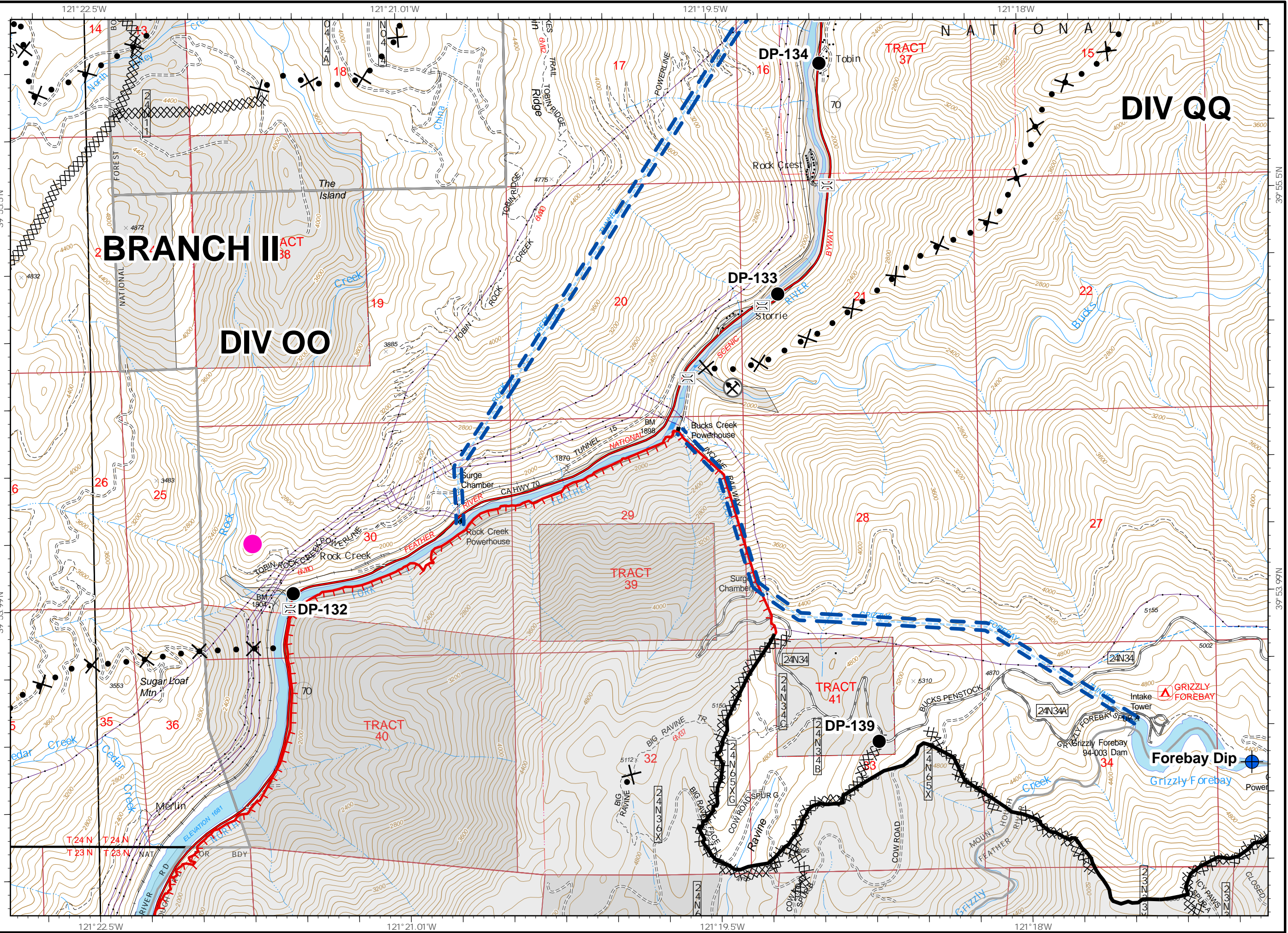


IAP Map Pack

North Complex
CA-PNF-001308
October 15, 2020
Branch II

Index Page: E5





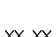
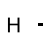
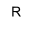
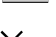







- Bridge
- Dip Site
- Drop Point
- Uncontrolled Fire Edge
- Contained Line
- Completed Dozer Line
- Proposed Dozer Line
- Mine
- MANDATORY EXCLUSION AREA
- Penstocks

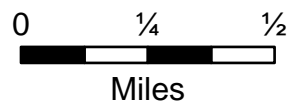
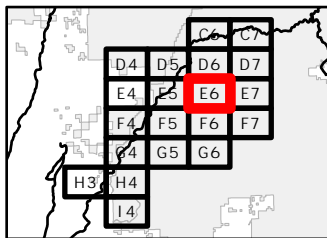
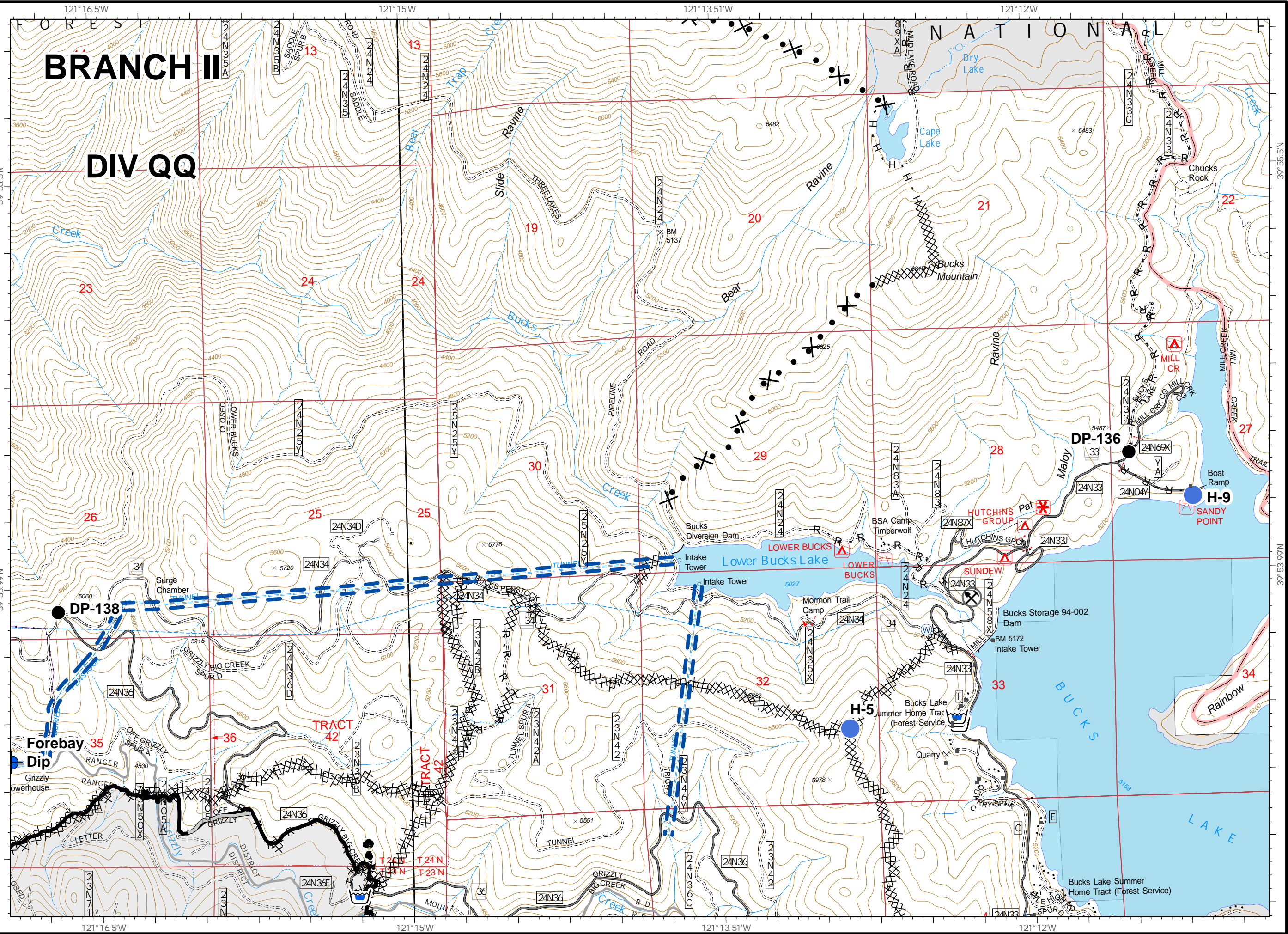


IAP Map Pack

North Complex
CA-PNF-001308
October 15, 2020
Branch II

Index Page: E6

-  Dip Site
-  Drop Point
-  Helispot
-  Water Source
-  Contained Line
-  Completed Dozer Line
-  Completed Hand Line
-  Road as Completed Line
-  Access or Improved Road
-  Proposed Dozer Line
-  Building Footprint
-  Mine
-  Pump
-  Water Tank
-  Penstocks

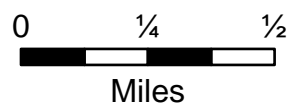
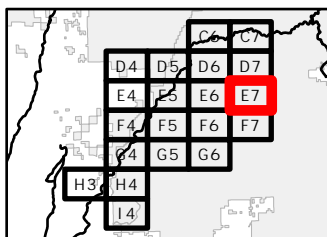
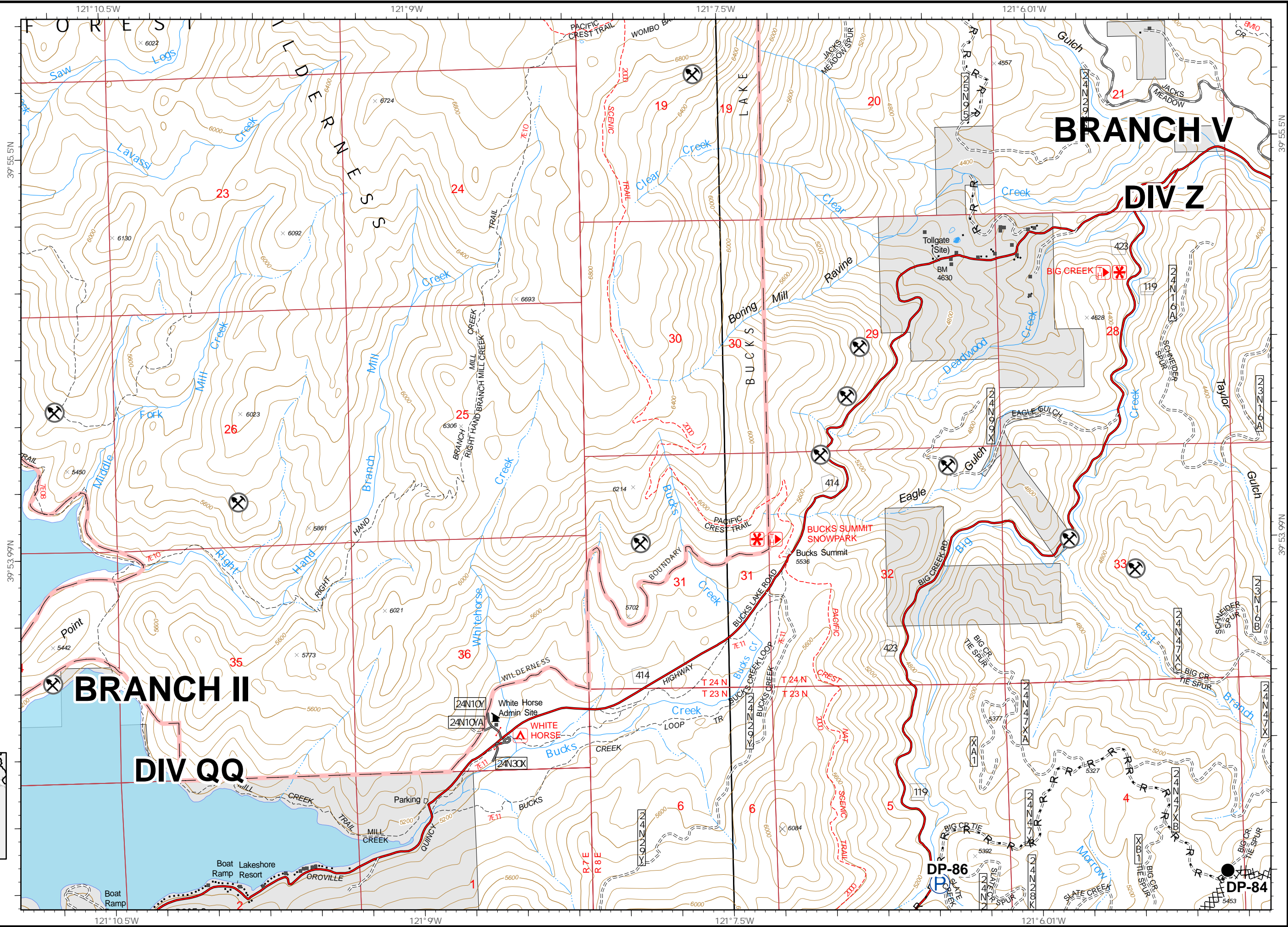


IAP Map Pack

North Complex
CA-PNF-001308
October 15, 2020
Branch II

Index Page: E7

- Drop Point
- XX XX Completed Dozer Line
- R Road as Completed Line
- Building Footprint
- ⊗ Mine
- P Pump

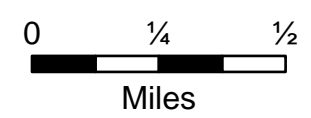
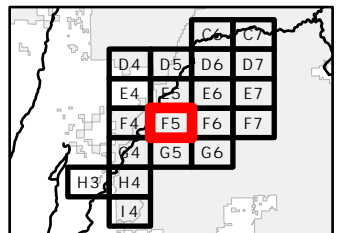
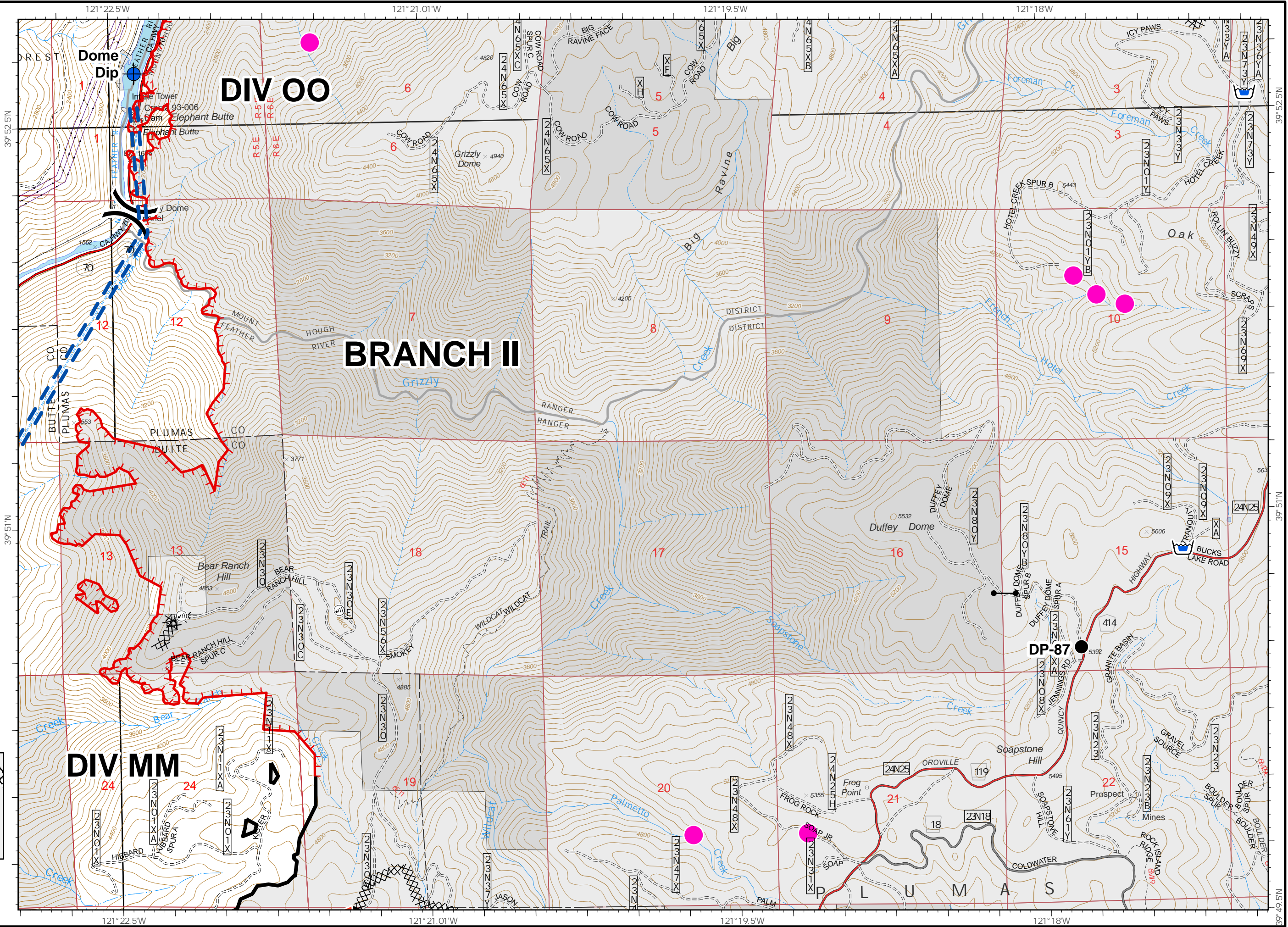


IAP Map Pack

North Complex
CA-PNF-001308
October 15, 2020
Branch II

Index Page: F5

- Dip Site
- Drop Point
- Gate
- Cell Coverage
- Spot Fire
- Division Break
- Uncontrolled Fire Edge
- Contained Line
- Completed Dozer Line
- Water Tank
- MANDATORY EXCLUSION AREA
- Penstocks

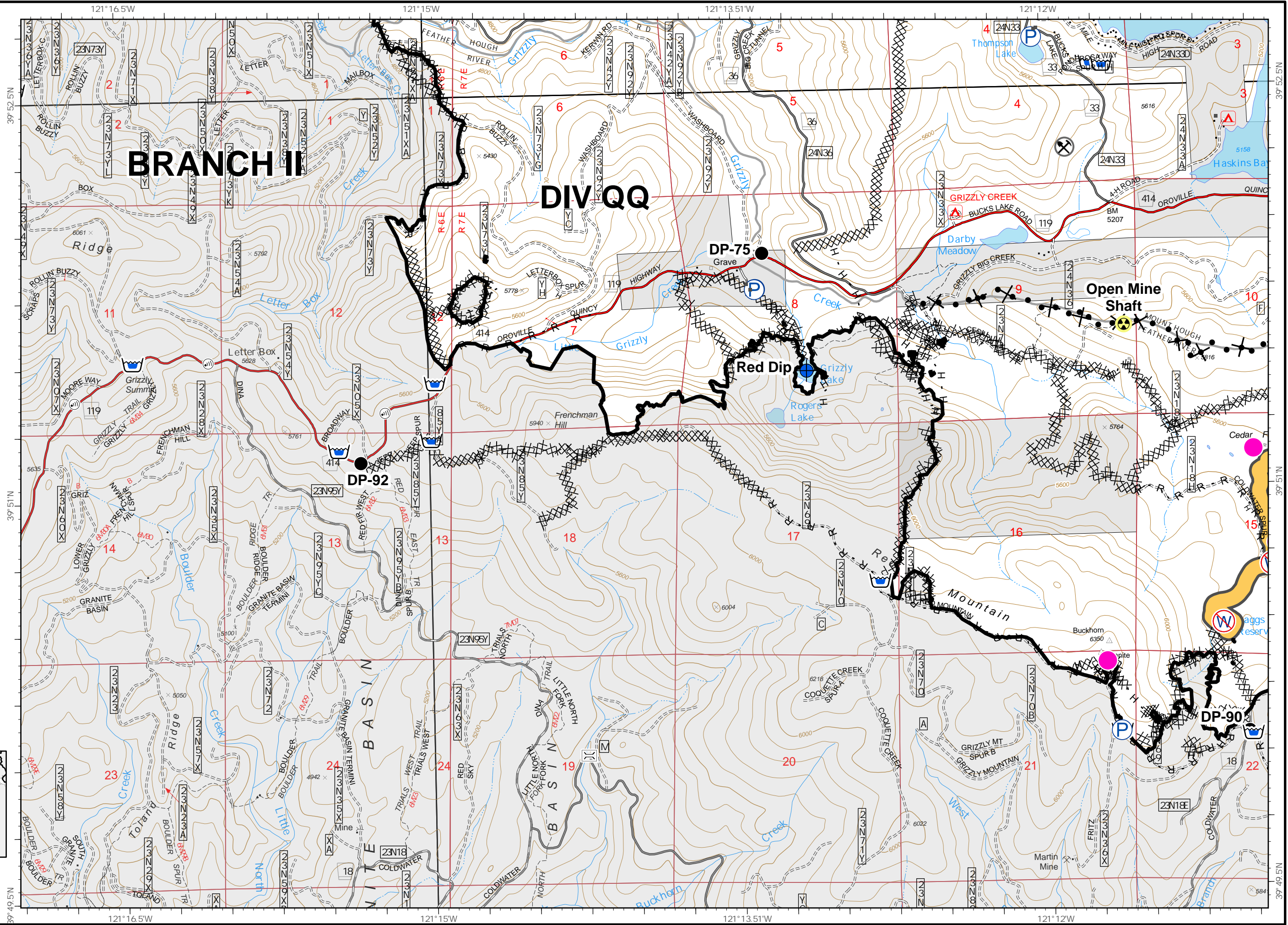
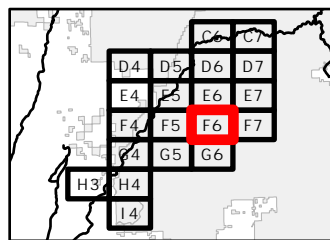


IAP Map Pack

North Complex
CA-PNF-001308
October 15, 2020
Branch II

Index Page: F6

- Bridge
- Dip Site
- Drop Point
- Hazard
- Cell Coverage
- Water Source
- Restricted Water Source
- Contained Line
- Completed Dozer Line
- Completed Hand Line
- Road as Completed Line
- Proposed Dozer Line
- Building Footprint
- Mine
- Pump
- Water Tank
- Willow Creek Avoidance
- MANDATORY EXCLUSION AREA

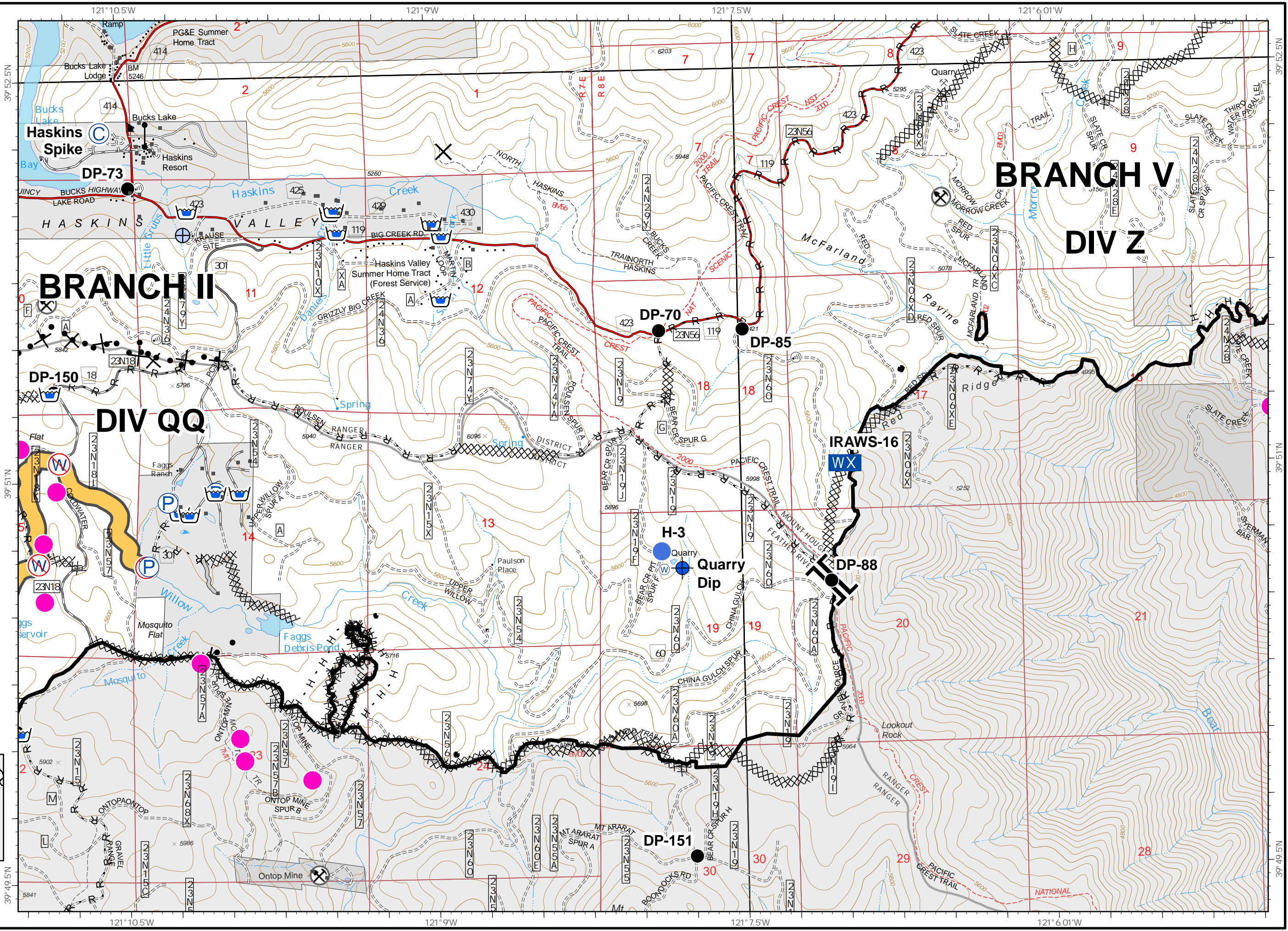
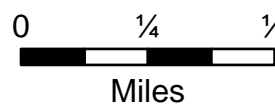
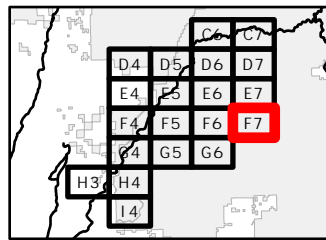


IAP Map Pack

North Complex
CA-PNF-001308
October 15, 2020
Branch II

Index Page: F7

- Camp
- Closure
- Dip Site
- Drop Point
- Gate
- Hellsip
- Cell Coverage
- Mobile Weather Unit
- Water Source
- Restricted Water Source
- Water Development or Draft Site
- Branch Break
- Contained Line
- Completed Dozer Line
- Completed Hand Line
- Road as Completed Line
- Access or Improved Road
- Proposed Dozer Line
- Building Footprint
- Mine
- Pump
- Water Tank
- Willow Creek Avoidance
- MANDATORY EXCLUSION AREA

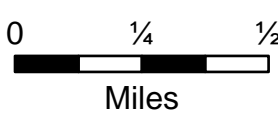
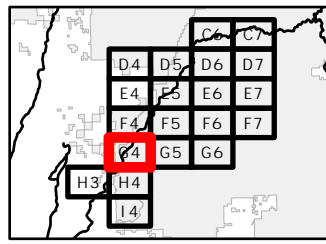
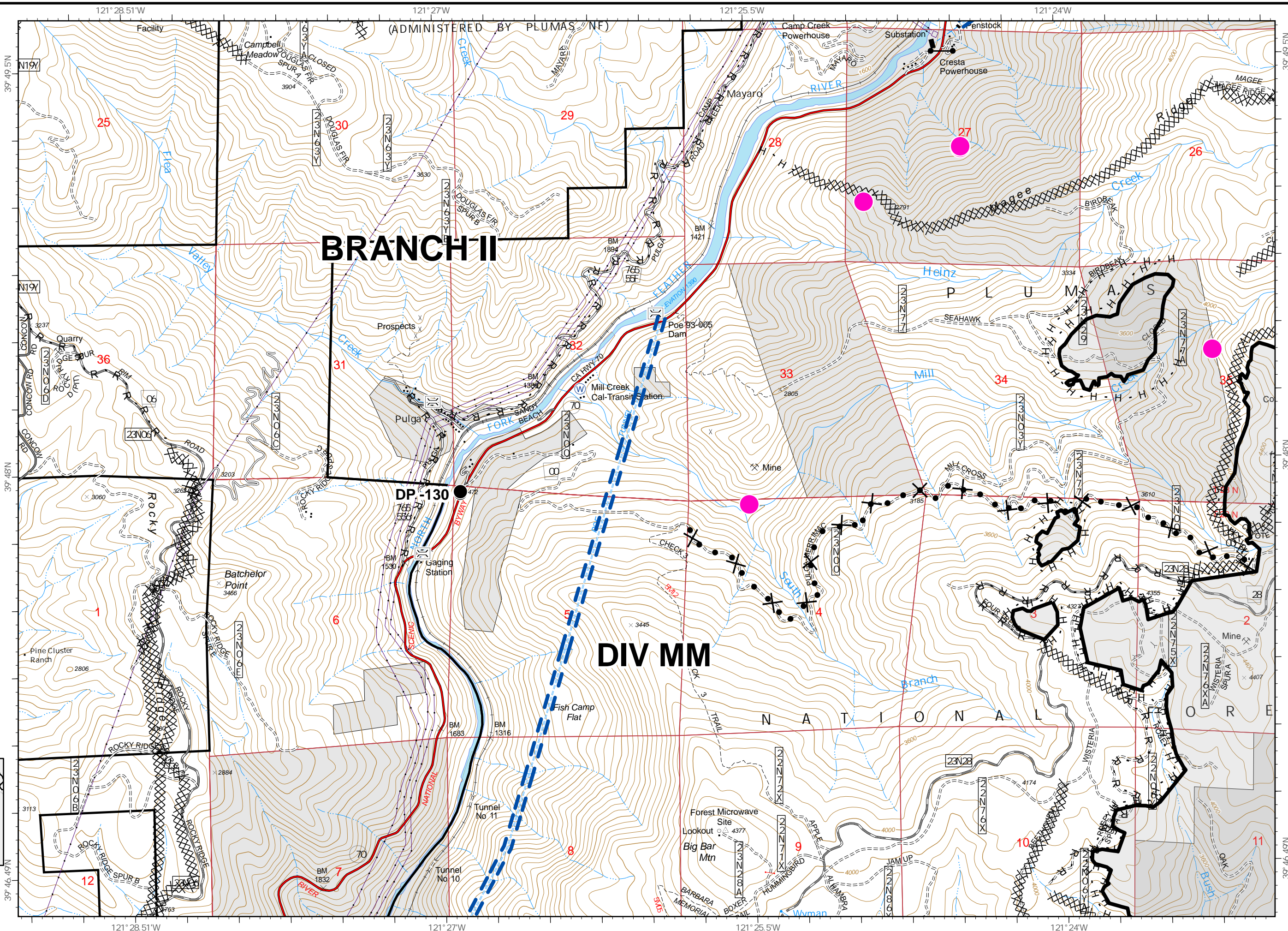


IAP Map Pack

North Complex
CA-PNF-001308
October 15, 2020
Branch II

Index Page: G4

- Bridge
- Drop Point
- Gate
- Repeater
- Water Source
- Contained Line
- Completed Dozer Line
- Completed Hand Line
- Road as Completed Line
- Proposed Dozer Line
- MANDATORY EXCLUSION AREA
- Penstocks

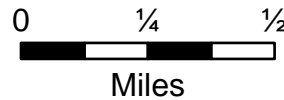
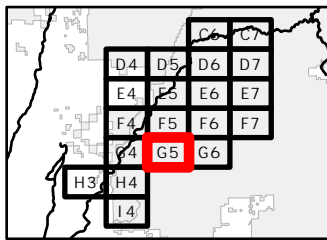
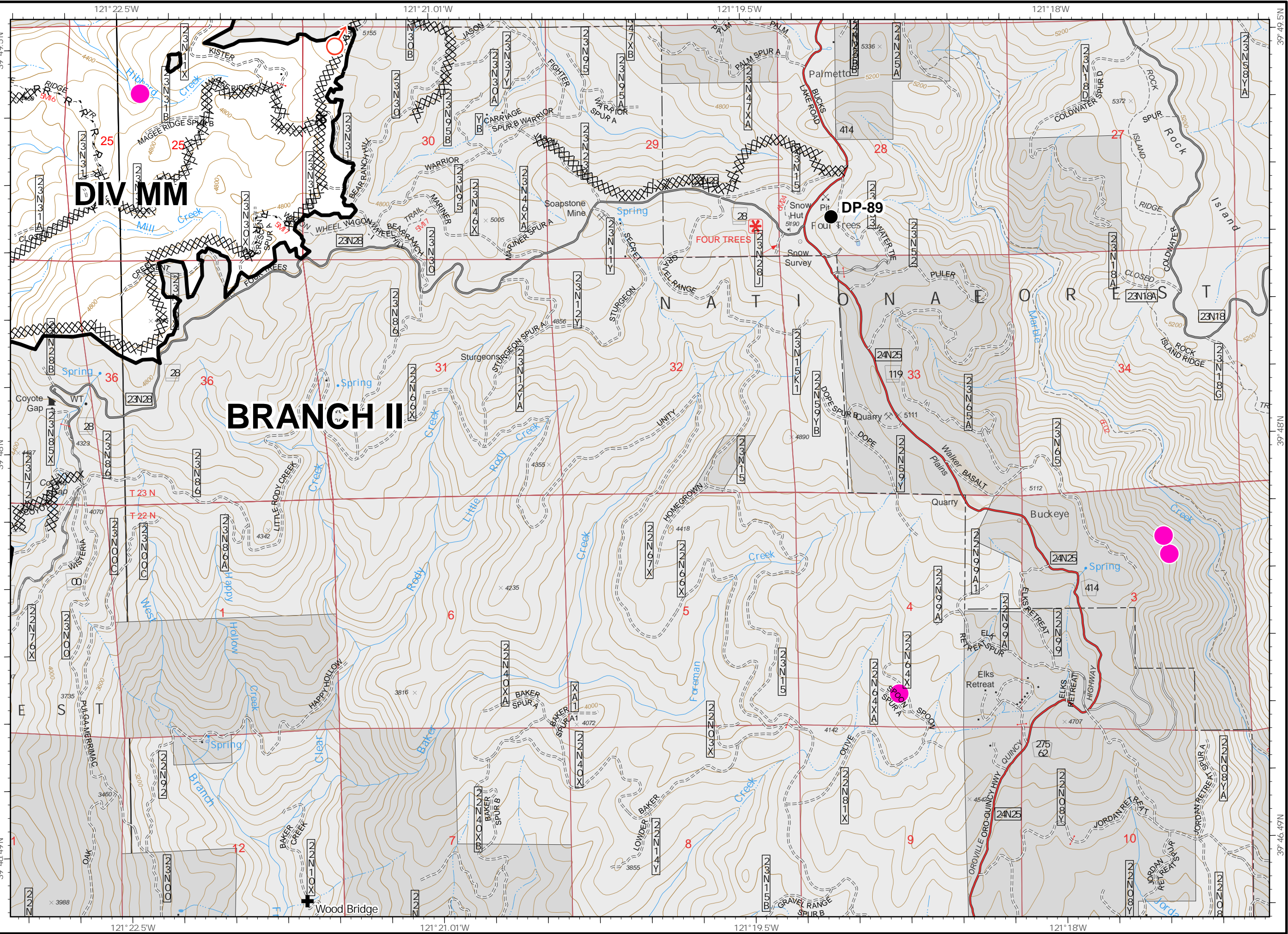


IAP Map Pack

North Complex
CA-PNF-001308
October 15, 2020
Branch II

Index Page: G5

- Drop Point
- Spot Fire
- Contained Line
- XX Completed Dozer Line
- H Completed Hand Line
- R Road as Completed Line
- X Proposed Dozer Line
- Hazmat
- MANDATORY EXCLUSION AREA
- ⊕ Wood Bridges

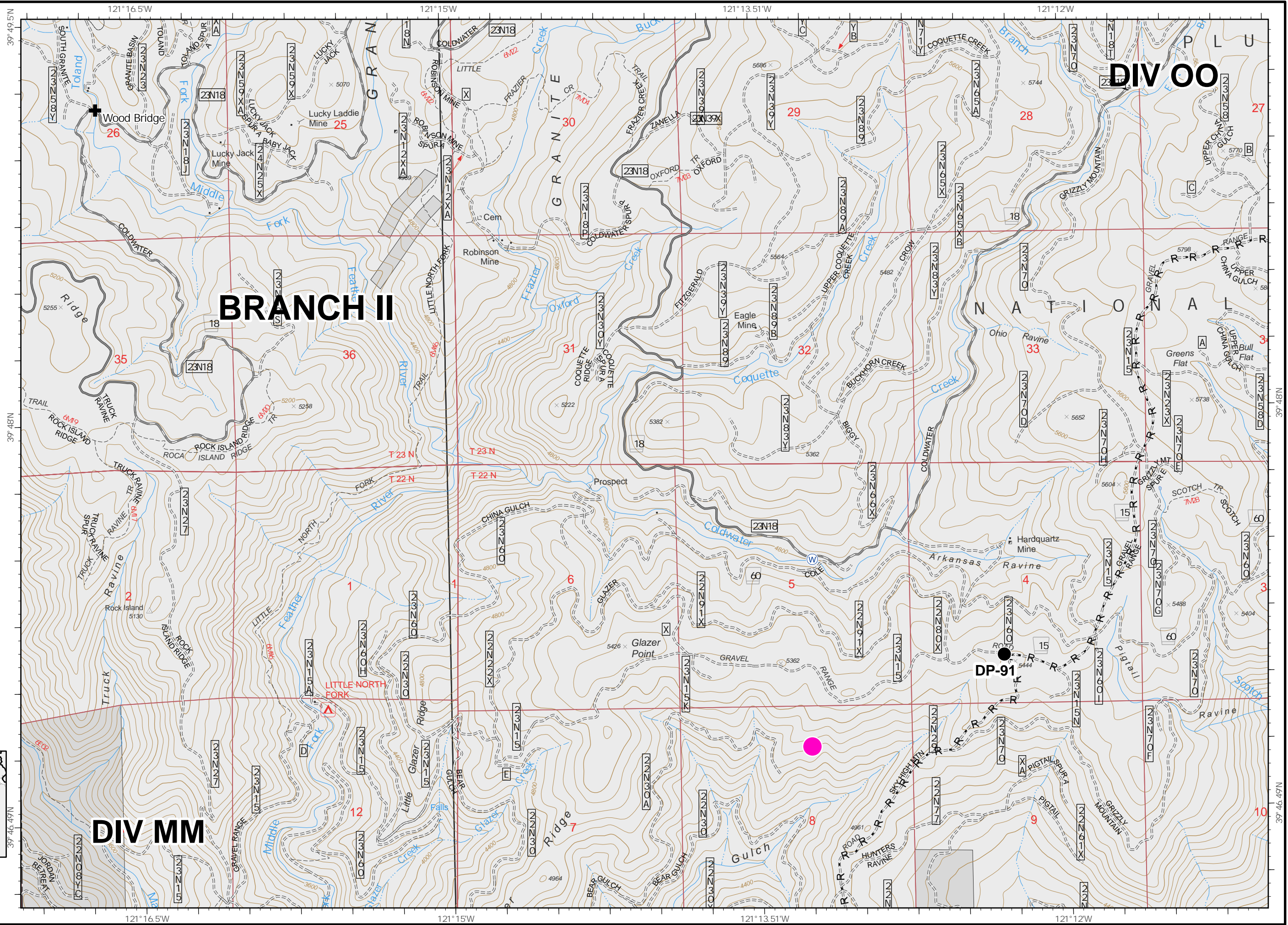


IAP Map Pack

North Complex
CA-PNF-001308
October 15, 2020
Branch II

Index Page: G6

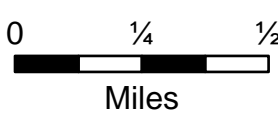
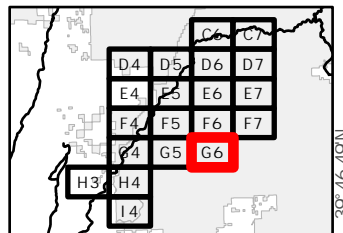
- Drop Point
- Ⓜ Water Source
- H Completed Hand Line
- R Road as Completed Line
- MANDATORY EXCLUSION AREA
- ✚ Wood Bridges



BRANCH II

DIV 00

DIV MM



121°16.5'W 121°15'W 121°13.5'W 121°12'W

39°49.5'N 39°48'N 39°46.49'N

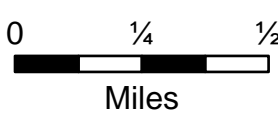
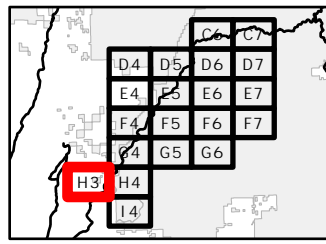
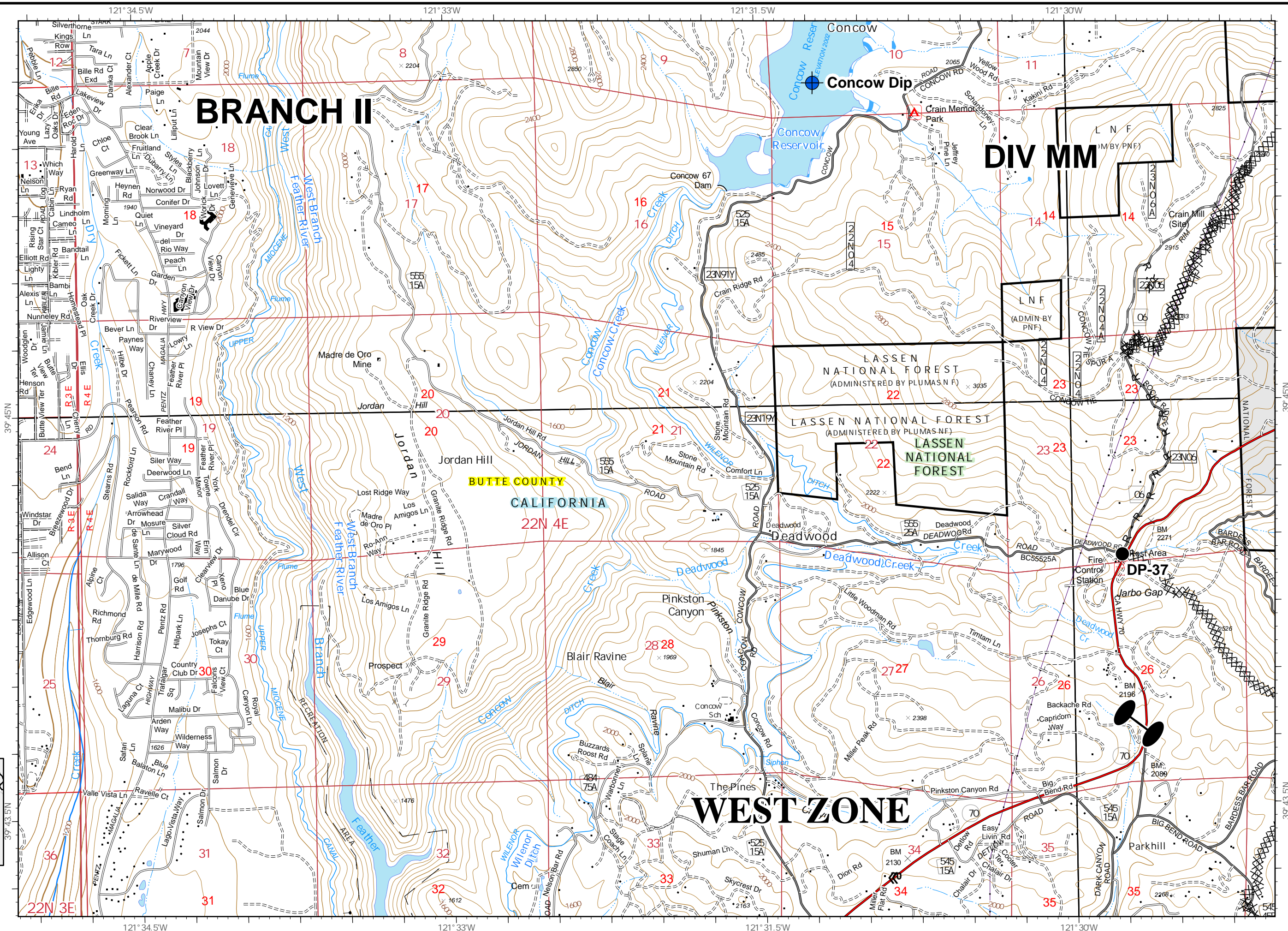
39°48'N 39°46.49'N

IAP Map Pack

North Complex
CA-PNF-001308
October 15, 2020
Branch II

Index Page: H3

- Dip Site
- Drop Point
- Zone Break
- Completed Dozer Line
- Road as Completed Line



IAP Map Pack

North Complex
CA-PNF-001308
October 15, 2020
Branch II

Index Page: H4

- Contained Line
- XX XX Completed Dozer Line
- H · Completed Hand Line
- Penstocks

