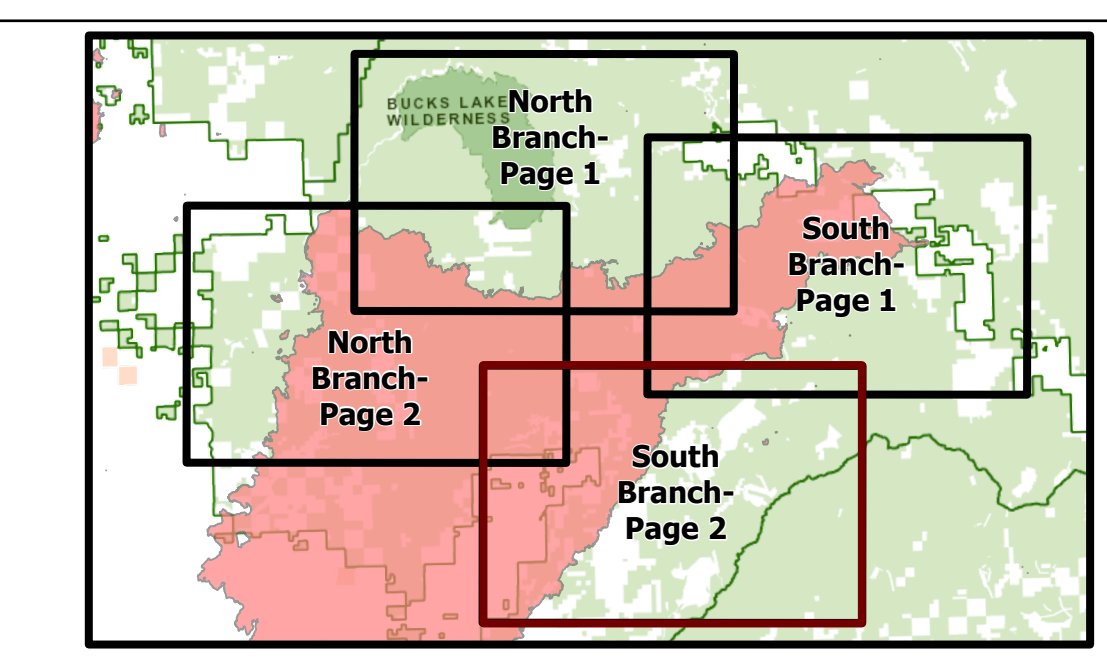


<ul style="list-style-type: none"> <li>Major Cities</li> <li>Bridge</li> <li>Camp</li> <li>Dip Site</li> <li>Drop Point</li> <li>Dozer Push</li> <li>Hazard</li> <li>Hazard Tree</li> <li>Helispot</li> <li>Internet Access</li> <li>Landing or Log Deck</li> <li>Mobile Weather Unit</li> </ul>	<ul style="list-style-type: none"> <li>Repair Point</li> <li>Repeater</li> <li>Safety Zone</li> <li>Staging Area</li> <li>Stream Crossing</li> <li>Water Source</li> <li>Value at Risk</li> <li>Other</li> <li>Division Break</li> <li>Branch Break</li> <li>SPI Gate</li> </ul>	<ul style="list-style-type: none"> <li>MANDATORY EXCLUSION AREA</li> <li>MANDATORY EXCLUSION AREA</li> <li>Structure</li> <li>Contained Line</li> <li>Completed Dozer Line</li> <li>Completed Hand Line</li> <li>Road as Completed Line</li> <li>Access or Improved Road</li> <li>Repair Line</li> <li>Road Repair</li> </ul>	<ul style="list-style-type: none"> <li>Penstocks</li> <li>Event_Polygon</li> <li>MANDATORY EXCLUSION AREA</li> <li>AvoidanceArea_HuntersCreekTrail</li> <li>Valley Creek Special Interest Area</li> <li>cnty19_1_basic</li> <li>Roads Open to All Vehicles, Yearlong</li> <li>Roads Open to Highway Legal Vehicles Only, Yearlong</li> </ul>	<ul style="list-style-type: none"> <li>Repair Status</li> <li>Completed - Inspected</li> <li>Completed - Ready for Inspection</li> <li>In Progress</li> <li>In Use - Fire Management</li> <li>No Repair Needed</li> <li>Other - See Comments</li> <li>Repair Needed</li> <li>Unknown</li> </ul>	<ul style="list-style-type: none"> <li>Land Owner</li> <li>BLM</li> <li>Other Private</li> <li>Sierra Pacific Industries</li> <li>State Wheeler</li> <li>State Land</li> <li>USDA Forest Service</li> <li>National Park</li> <li>Local Government</li> <li>US FWS</li> <li>Other Federal</li> <li>Tribal Land</li> <li>Label Point</li> </ul>
--	--	---	--	---	---

# REPAIR/OPERATIONS

North Complex  
CA-PNF-001308  
10/23/2020 - 10/25/2020  
South Branch- Page 2



0 1 2 Miles  
1:28,000  
Map Updated: 10/23/2020 10:27