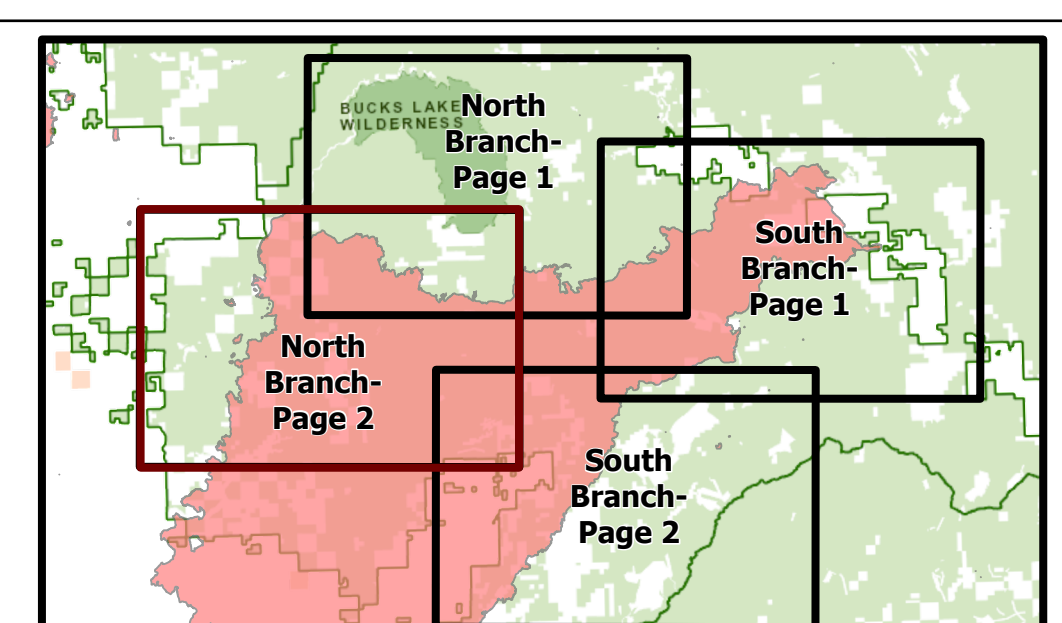



Major Cities	Hotspot	Spot Fire	SFI Gate	Contained Line	Penstocks
Bridge	Internet Access	Staging Area	Completed Outer Line	Completed Outer Line	Everet_Polygon
Count	Landmark	Stream Crossing	MANDATORY EXCLUSION AREA	Completed Hand Line	Line/Demarcation
Culvert	Landing or Log Deck	Water Source	MANDATORY EXCLUSION AREA	Road as Completed Road	Access or Improved Road
Dip Site	Mobile Weather Unit	Restricted Water Source	MANDATORY EXCLUSION AREA	Access or Improved Road	Completed Flow Line
Drop Point	Repair Point	Water Development or Draft Site	MANDATORY EXCLUSION AREA	Completed Flow Line	Highlighted Manmade Feature
Dropper Push	Repairer	Value at Risk	Mine	Repair Line	Other
Gate	Request Location	Other	Woodbridges	Road Repair	Roads Open to All Vehicles, Working
Hazard	Road Repair	Division Break	Structure	Contained, Not Controlled	Roads Open to Highway Legal Vehicles Only, Working
Hazard Tree	Sling Site	Branch Break			

Repair Status	Land Owner
Completed - Inspected	BLM
Completed - Ready for Inspection	Other Private
In Progress	Sierra Pacific Industries
In Use - Fire Management	Super-Wheeler
No Repair Needed	State Land
Other - See Comments	USDA Forest Service
Repair Needed	National Park
Unknown	Local Government
	US FWS
	Other Federal
	Tribal Land

REPAIR/OPERATIONS
 North Complex
 CA-PNF-001308
 10/29/2020 - 10/31/2020
 North Branch- Page 2








0 1 2 Miles
 1:28,000
 Map Updated: 10/28/2020 10:00