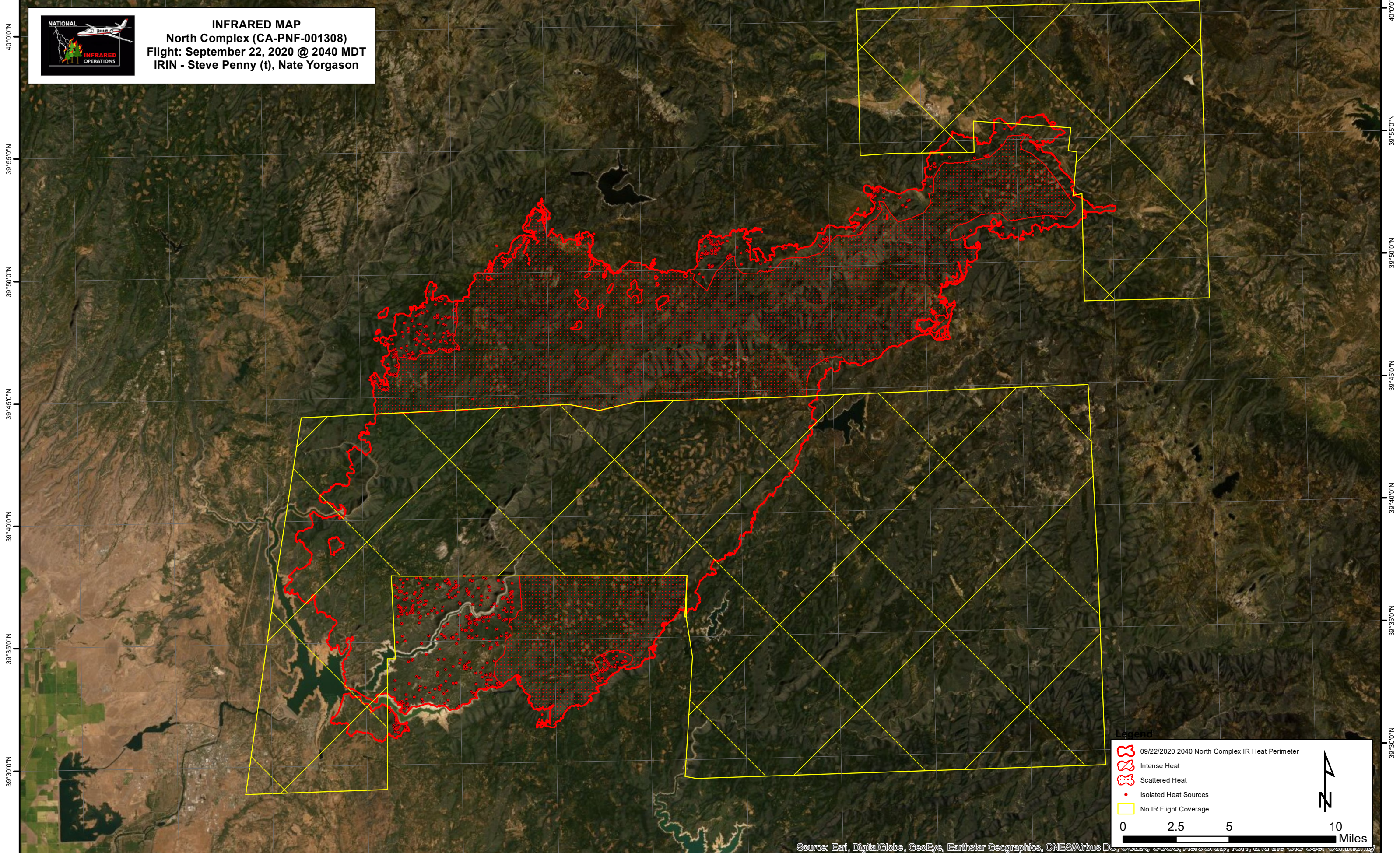







121°40'0"W 121°35'0"W 121°30'0"W 121°25'0"W 121°20'0"W 121°15'0"W 121°10'0"W 121°0'0"W 120°55'0"W 120°50'0"W 120°45'0"W 120°40'0"W 120°35'0"W

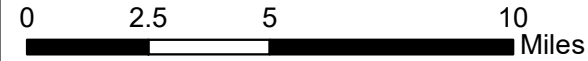


**INFRARED MAP**  
**North Complex (CA-PNF-001308)**  
**Flight: September 22, 2020 @ 2040 MDT**  
**IRIN - Steve Penny (t), Nate Yorgason**



**Legend**

-  09/22/2020 2040 North Complex IR Heat Perimeter
-  Intense Heat
-  Scattered Heat
-  Isolated Heat Sources
-  No IR Flight Coverage



Source: Esri, DigitalGlobe, GeoEye, Earthstar Geographics, CNES/Airbus D, etc.

121°40'0"W 121°35'0"W 121°30'0"W 121°25'0"W 121°20'0"W 121°15'0"W 121°10'0"W 121°5'0"W 121°0'0"W 120°55'0"W 120°50'0"W 120°45'0"W 120°40'0"W 120°35'0"W