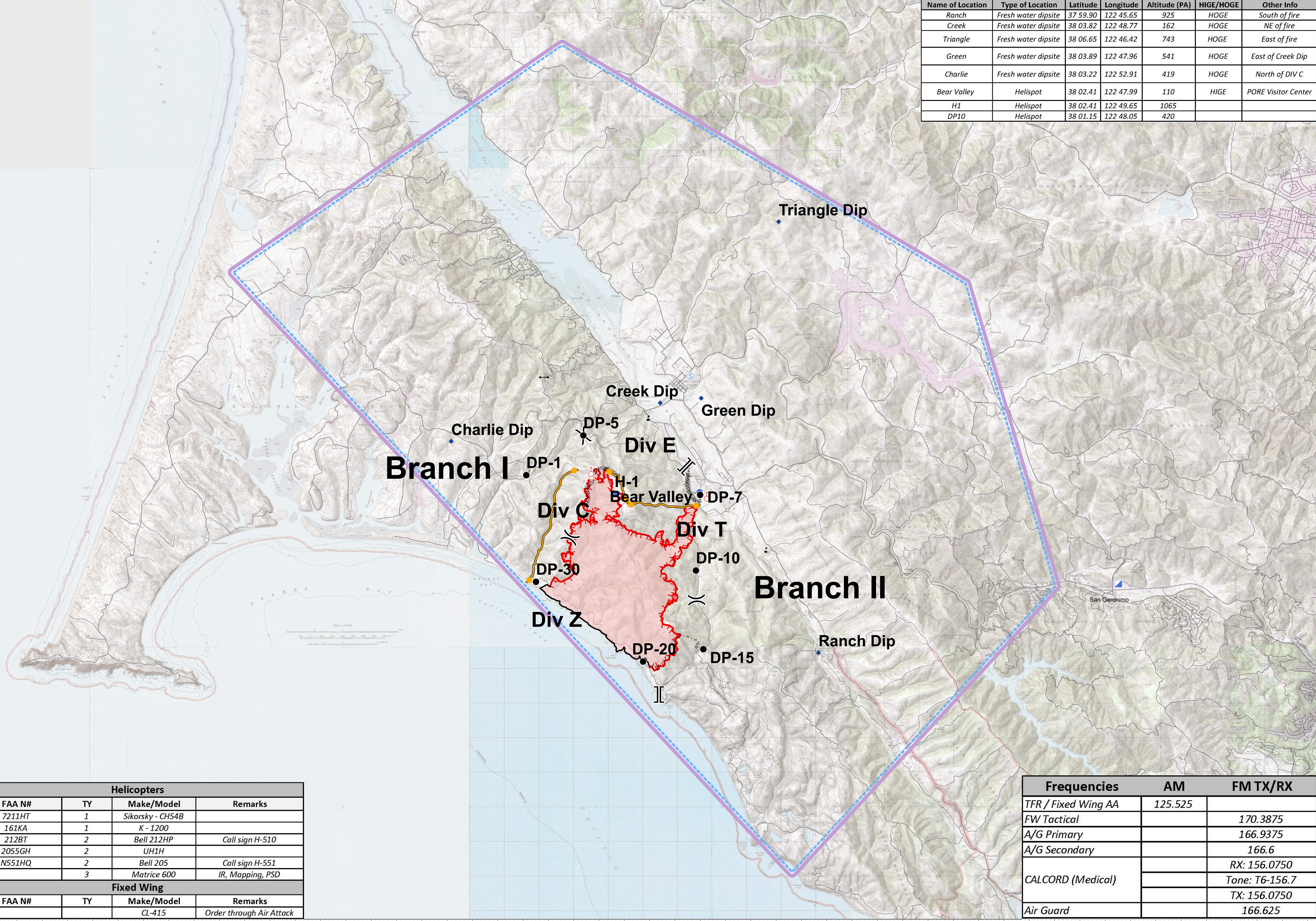
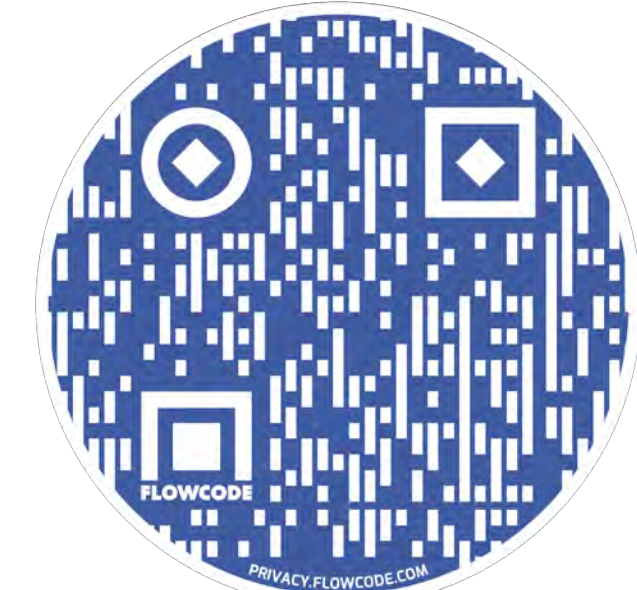


Name of Location	Type of Location	Latitude	Longitude	Altitude (PA)	HIGE/HOGE	Other Info
Ranch	Fresh water dipsite	37 59.90	122 45.65	925	HOGE	South of fire
Creek	Fresh water dipsite	38 03.82	122 48.77	162	HOGE	NE of fire
Triangle	Fresh water dipsite	38 06.65	122 46.42	743	HOGE	East of fire
Green	Fresh water dipsite	38 03.89	122 47.96	541	HOGE	East of Creek Dip
Charlie	Fresh water dipsite	38 03.22	122 52.91	419	HOGE	North of DIV C
Bear Valley	Helispot	38 02.41	122 47.99	110	HIGE	PORE Visitor Center
H1	Helispot	38 02.41	122 49.65	1065		
DP10	Helispot	38 01.15	122 48.05	420		



Helicopters			
FAA N#	TY	Make/Model	Remarks
7211HT	1	Sikorsky - CH54B	
161KA	1	K - 1200	
212BT	2	Bell 212HP	Call sign H-510
2055GH	2	UH1H	
N551HQ	2	Bell 205	Call sign H-551
	3	Matrice 600	IR, Mapping, PSD
Fixed Wing			
FAA N#	TY	Make/Model	Remarks
		CL-415	Order through Air Attack

Frequencies	AM	FM TX/RX
TFR / Fixed Wing AA	125.525	
FW Tactical		170.3875
A/G Primary		166.9375
A/G Secondary		166.6
CALCORD (Medical)		RX: 156.0750
		Tone: T6-156.7
Air Guard		TX: 156.0750
		166.625



**Woodward Air Ops**  
 CA-RNP-012  
 August 27, 2020  
 2,860 Acres  
 Fire perimeter updated from IR  
 on 8/26 @0030

- TFR # 0/7637
- Event Group Layer Point Labels Defined
- Dip Site
- Drop Point
- Gate
- Helispot
- Incident Command Post
- Spot Fire
- Staging Area
- Value at Risk
- ⌋ Division Break
- ⌋ Branch Break
- ▬ Uncontrolled Fire Edge
- ▬ Contained Line
- ⊗⊗⊗⊗ Completed Dozer Line
- H - H - Completed Hand Line
- Management Action Point
- ▬ Wildfire Daily Fire Perimeter
- ▬ road
- ⋯ Trails

