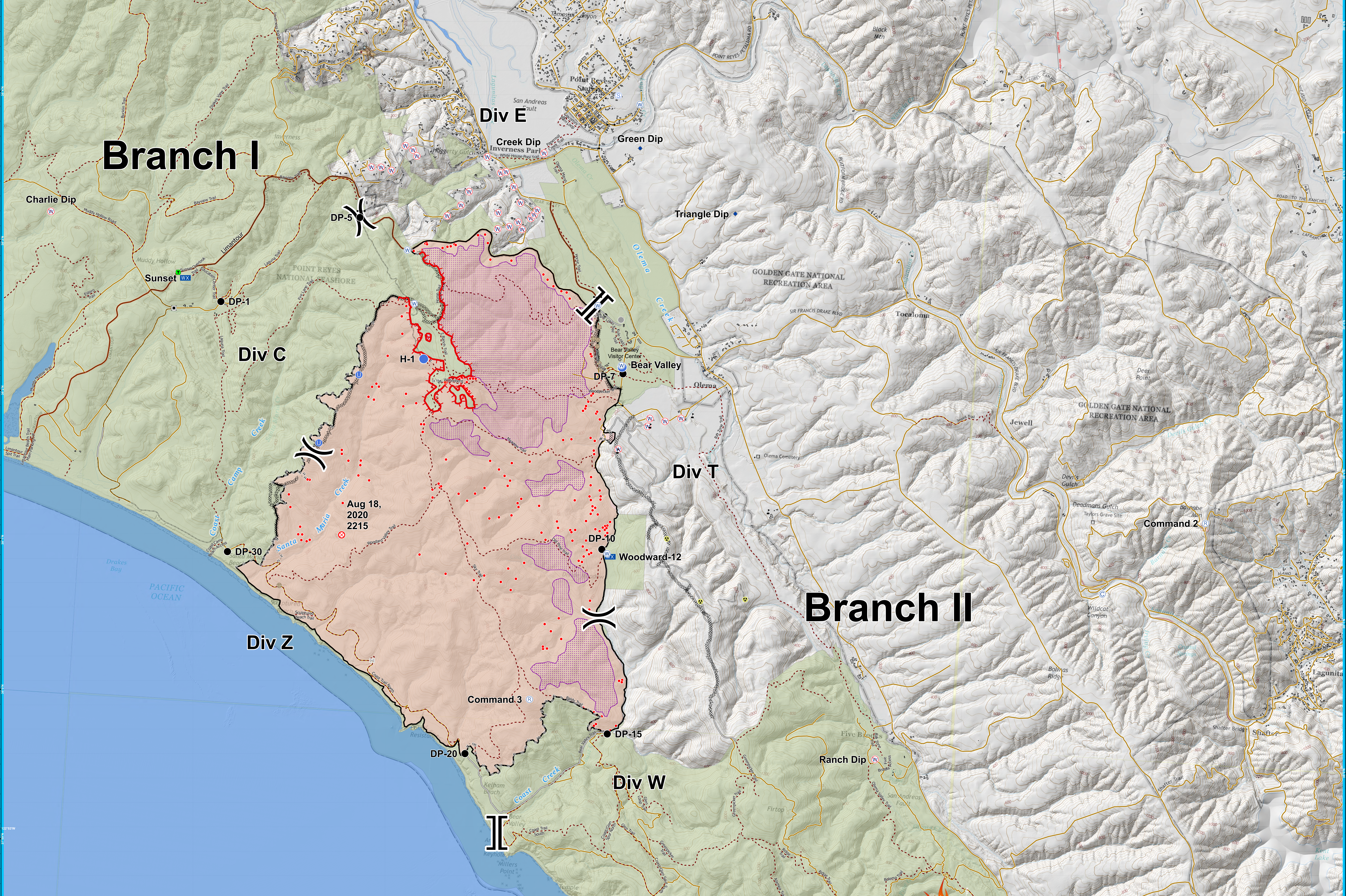


Branch I

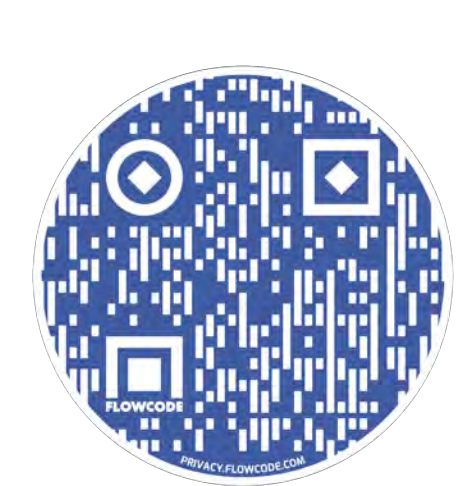
Branch II



Aug 18, 2020
2215

BRIEFING
WOODWARD FIRE
CA-RNP-012009
September 6, 2020
4,835 acres

Layer	● Fire Origin	○ Staging Area	⊗ Completed Dozer Line	■ Point Reyes
— Limantour_Road	— Gate	○ Water Source	— Completed Hand Line	■ Park Boundary
- - - Trails	⚠ Hazard	○ Restricted Water Source	— Access or Improved Road	— Roads
≡ Bridge	○ Unimproved Landing Area	○ Value at Risk	— Fence	IR 20200905_2355
○ Camp	● Helispot	○ Other	— Road Repair	● 20200905_2355_Woodward_IsolatedHeatSources
● Clean Up Area	● Hot Spot	○ Other	○ Other	■ 20200905_2355_Woodward_ScatteredHeat
● Dip Site	○ Mobile Weather Unit	⌋ Division Break	■ Fire Polygon	■ 20200905_2355_Woodward_IntenseHeat
● Drop Point	○ Repeater	⌋ Branch Break	■ Structures	■ 20200905_2355_Woodward_HeatPerimeter
○ Fence - Cut/Damaged	— Road Repair	⌋ Uncontrolled Fire Edge	— Roads	
		— Contained Line		



Perimeter updated from IR on 9-05-2020 @ 2355

