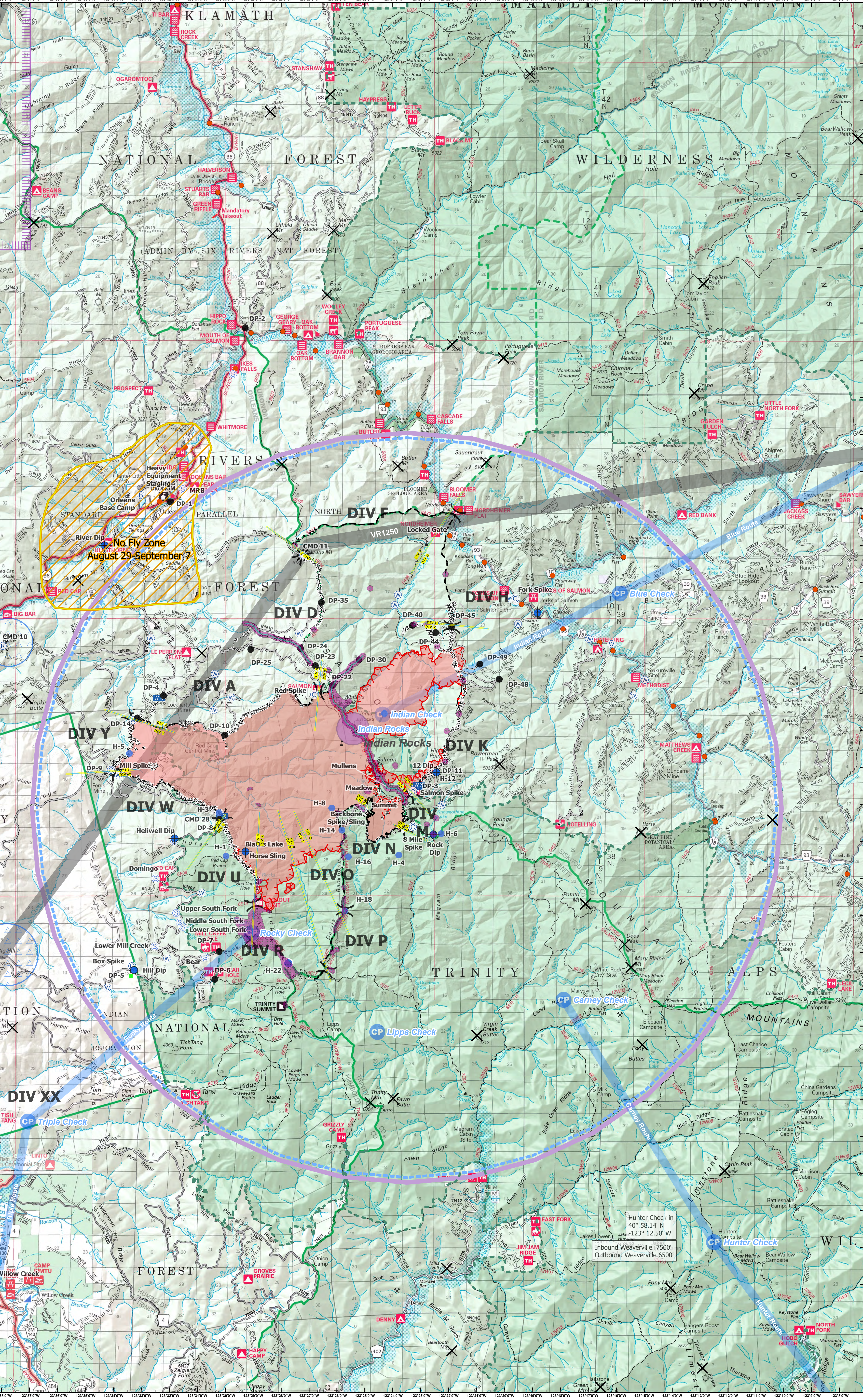


Air Operations RED SALMON COMPLEX CA-SRF-000656 2020-08-28

Label	Latitude	Longitude	Notes
Backbone Spike/Sling	41° 09.510' N	123° 25.050' W	
Box Spike	41° 05.627' N	123° 33.332' W	
Fork Spike	41° 17.858' N	123° 21.774' W	
Hill Cap Spike	41° 18.271' N	123° 24.892' W	At DP-9
Orleans Base Camp	41° 18.367' N	123° 33.029' W	At DP-1
Red Spike	41° 13.025' N	123° 26.762' W	Adjacent to DP-4
Salmon Spike	41° 10.346' N	123° 23.036' W	
Eight Mile Sling	41° 09.392' N	123° 23.355' W	
Horse Sling	41° 08.459' N	123° 29.439' W	
Meadow Sling	41° 10.399' N	123° 24.480' W	
Mullens Sling	41° 10.452' N	123° 24.167' W	
Salmon Ridge Sling	41° 11.255' N	123° 24.803' W	
Summit Sling	41° 10.343' N	123° 23.714' W	
Mobile Retardant Base	41° 18.480' N	123° 31.490' W	
12 Dip	41° 10.866' N	123° 22.438' W	
Blacks Lake Dip	41° 08.711' N	123° 29.269' W	
Heliwell Dip	41° 09.080' N	123° 31.810' W	
Hill Dip	41° 5.518' N	123° 33.266' W	Adjacent to DP-5
Mullens Dip	41° 15.880' N	123° 18.820' W	
Rock Dip	41° 17.038' N	123° 24.260' W	
South River Dip	41° 14.099' N	123° 22.550' W	
Blue Check	41° 15.700' N	123° 15.872' W	
Cammy Check	41° 04.711' N	123° 17.887' W	
Hunter Check	40° 58.140' N	123° 21.500' W	Weaverville Elevation 8000'
Indian Check	41° 12.432' N	123° 24.365' W	
Norton Check	41° 08.348' N	123° 40.818' W	
Rocky Check	41° 06.500' N	123° 29.050' W	
Tanner Check	41° 19.477' N	123° 06.307' W	Coming from Willow Creek
Triple Check	41° 03.843' N	123° 37.057' W	
Upps Check	41° 01.397' N	123° 24.555' W	
H-1	41° 08.600' N	123° 29.968' W	HOGE - Type 2 - Elevation 5900'
H-3	41° 09.765' N	123° 30.218' W	HOGE - Type 2
H-4	41° 08.630' N	123° 23.790' W	HOGE - Type 2 - Elevation 6000'
H-5	41° 11.380' N	123° 33.430' W	HOGE - Type 2
H-6	41° 09.210' N	123° 24.316' W	HOGE - Type 2 Elevation 6500'
H-8	41° 09.203' N	123° 26.188' W	HOGE - Type 2 - Elevation 4500'
H-12	41° 10.866' N	123° 22.438' W	HOGE - Type 3 - Elevation 5200'
H-14	41° 09.299' N	123° 25.807' W	HOGE - Type 2 - Elevation 5890'
H-16	41° 08.687' N	123° 25.737' W	HOGE - Type 2 - Elevation 5600'
H-18	41° 07.120' N	123° 25.710' W	HOGE - Type 2
H-20	41° 12.458' N	123° 24.331' W	HOGE - Type 2
H-22	41° 05.698' N	123° 27.743' W	HOGE - Type 2 & 3 - Elevation 6500'
DP-1	41° 18.172' N	123° 31.944' W	Adjacent to Orleans Base Camp
DP-2	41° 22.873' N	123° 29.284' W	
DP-3	41° 10.293' N	123° 23.328' W	Adjacent to Salmon Spike
DP-5	41° 12.951' N	123° 32.228' W	
DP-6	41° 05.518' N	123° 33.266' W	
DP-7	41° 05.463' N	123° 30.572' W	
DP-9	41° 08.889' N	123° 30.357' W	CMD 28 located here
DP-10	41° 10.871' N	123° 33.993' W	Adjacent to Mill Gap Spike
DP-11	41° 11.874' N	123° 30.021' W	
DP-14	41° 13.099' N	123° 24.438' W	Adjacent to 12 Dip
DP-22	41° 13.209' N	123° 26.161' W	
DP-23	41° 13.751' N	123° 26.774' W	
DP-24	41° 14.218' N	123° 27.304' W	
DP-25	41° 14.189' N	123° 29.084' W	
DP-30	41° 13.909' N	123° 28.288' W	
DP-35	41° 15.460' N	123° 26.560' W	
DP-40	41° 14.842' N	123° 23.296' W	
DP-44	41° 14.646' N	123° 22.462' W	
DP-45	41° 14.809' N	123° 21.896' W	
DP-48	41° 13.385' N	123° 20.187' W	
DP-49	41° 13.793' N	123° 20.885' W	
Air Hazard	41° 01.550' N	123° 38.760' W	(On Jones Point Fire-South End of Fire)
Indian Rocks (VAR)	41° 12.049' N	123° 25.430' W	Air Hazard - Stay 500' AGL - 1/2 mi. radius
Willow Creek Helibase	40° 57.036' N	123° 38.164' W	
Weaverville Helibase	40° 44.460' N	122° 55.210' W	



Ares: 21,980
Datum: NAD 1983

0 2 1/2 5 10 Miles

- ADD Lines
- No Fly Zone
- Sling Site
- Camp
- Culvert
- Dip Site
- Drop Point
- Helibase
- Helispot
- Incident Base
- Incident Command Post
- Landmark
- Mobile Weather Unit
- Repeater
- Staging Area
- Water Source
- Value at Risk
- Division Break
- Air Hazard
- Flight Paths
- Wilderness
- Aerial cable
- Military Training Route
- Check Point
- VAR
- Summits
- TFR

Hunter Check-in 40° 58.14' N - 123° 12.50' W
Inbound Weaverville 7500'
Outbound Weaverville 6500'