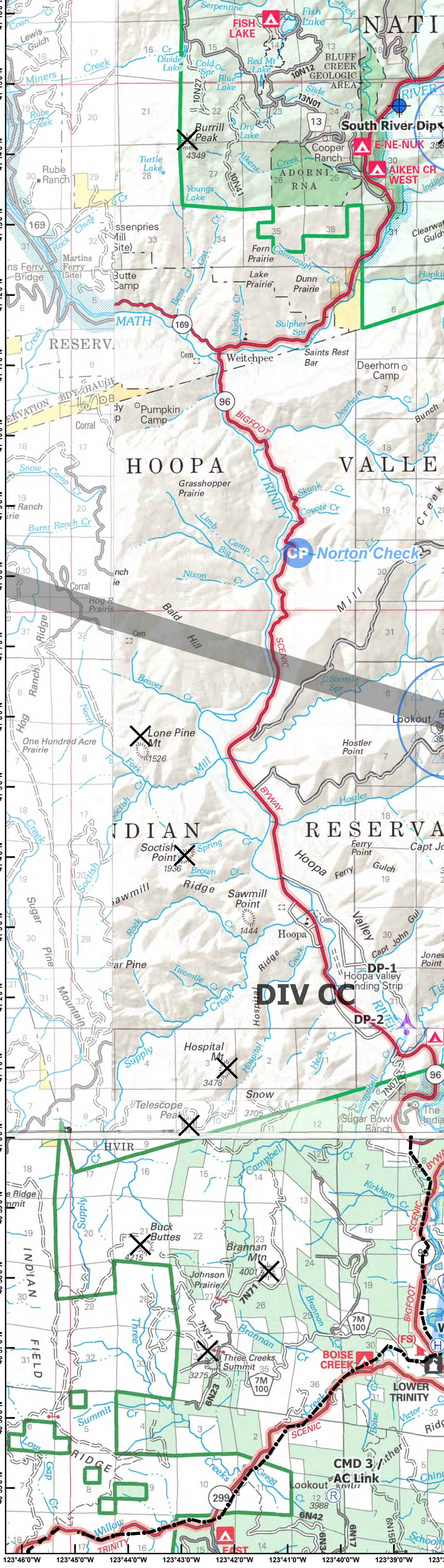
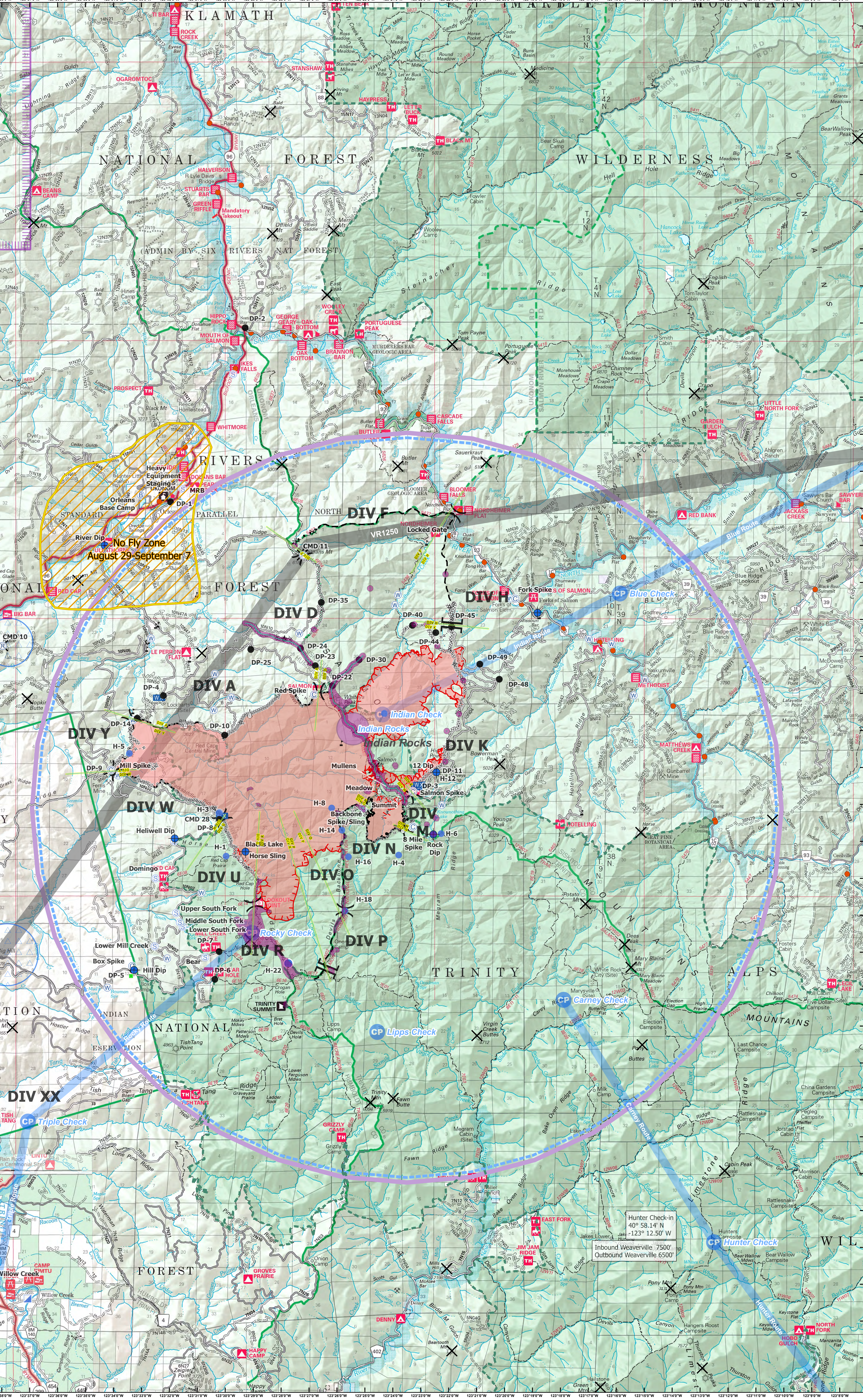


Air Operations RED SALMON COMPLEX CA-SRF-000656 2020-08-29

Label	Latitude	Longitude	Notes
Backbone Spike/Sling	41° 09.510' N	123° 25.050' W	
Box Spike	41° 05.627' N	123° 33.332' W	
Fork Spike	41° 17.858' N	123° 21.774' W	
Hill Cap Spike	41° 18.251' N	123° 24.892' W	At DP-9
Orleans Base Camp	41° 18.367' N	123° 33.029' W	At DP-1
Red Spike	41° 13.025' N	123° 26.762' W	Adjacent to DP-4
Salmon Spike	41° 10.346' N	123° 23.036' W	
Eight Mile Sling	41° 09.392' N	123° 23.355' W	
Horse Sling	41° 08.459' N	123° 29.439' W	
Meadow Sling	41° 10.399' N	123° 24.480' W	
Mullens Sling	41° 10.452' N	123° 24.167' W	
Salmon Ridge Sling	41° 11.255' N	123° 24.803' W	
Summit Sling	41° 10.343' N	123° 23.714' W	
Mobile Retardant Base	41° 18.480' N	123° 31.490' W	
12 Dip	41° 10.866' N	123° 22.438' W	
Blacks Lake Dip	41° 08.711' N	123° 29.269' W	
Heliwell Dip	41° 09.080' N	123° 31.810' W	
Hill Dip	41° 5.518' N	123° 33.266' W	Adjacent to DP-5
Mullens Dip	41° 15.880' N	123° 18.820' W	
Rock Dip	41° 17.038' N	123° 34.266' W	
South River Dip	41° 14.099' N	123° 22.550' W	
South River Dip	41° 14.169' N	123° 38.900' W	
Blue Check	41° 15.700' N	123° 15.872' W	
Carney Check	41° 04.711' N	123° 17.887' W	
Hunter Check	40° 58.140' N	123° 21.500' W	Weaverville Elevation 8000'
Indian Check	41° 12.432' N	123° 24.365' W	
Norton Check	41° 08.348' N	123° 40.818' W	
Rocky Check	41° 06.500' N	123° 29.050' W	
Tanner Check	41° 19.477' N	123° 06.307' W	
Triple Check	41° 03.843' N	123° 37.057' W	Coming from Willow Creek
Upps Check	41° 01.397' N	123° 24.555' W	
H-1	41° 08.600' N	123° 29.968' W	HOGE - Type 2 - Elevation 5900'
H-3	41° 09.765' N	123° 30.218' W	HOGE - Type 2
H-4	41° 08.630' N	123° 23.790' W	HOGE - Type 2 - Elevation 6000'
H-5	41° 11.380' N	123° 33.430' W	HOGE - Type 2
H-6	41° 09.210' N	123° 24.316' W	HOGE - Type 2 Elevation 6500'
H-8	41° 09.203' N	123° 26.188' W	HOGE - Type 2 - Elevation 4500'
H-12	41° 10.866' N	123° 22.438' W	HOGE - Type 3 - Elevation 5200'
H-14	41° 09.299' N	123° 25.807' W	HOGE - Type 2 - Elevation 5800'
H-16	41° 08.687' N	123° 25.737' W	HOGE - Type 2 - Elevation 5600'
H-18	41° 07.120' N	123° 25.710' W	HOGE - Type 2
H-20	41° 12.458' N	123° 24.331' W	HOGE - Type 2
H-22	41° 05.698' N	123° 27.743' W	HOGE - Type 2 & 3 - Elevation 6500'
DP-1	41° 18.172' N	123° 31.944' W	Adjacent to Orleans Base Camp
DP-2	41° 22.873' N	123° 29.284' W	
DP-3	41° 10.293' N	123° 23.328' W	Adjacent to Salmon Spike
DP-5	41° 12.951' N	123° 32.228' W	
DP-6	41° 05.518' N	123° 33.266' W	
DP-7	41° 05.463' N	123° 30.572' W	
DP-9	41° 06.013' N	123° 30.214' W	CMD 28 located here
DP-8	41° 09.889' N	123° 30.357' W	Adjacent to Mill Gap Spike
DP-9	41° 10.871' N	123° 33.993' W	
DP-10	41° 11.874' N	123° 30.021' W	
DP-11	41° 13.099' N	123° 24.438' W	Adjacent to 12 Dip
DP-14	41° 22.872' N	123° 29.294' W	
DP-22	41° 13.209' N	123° 26.161' W	
DP-23	41° 13.751' N	123° 26.774' W	
DP-24	41° 14.218' N	123° 27.304' W	
DP-25	41° 14.189' N	123° 29.084' W	
DP-30	41° 13.909' N	123° 28.288' W	
DP-35	41° 15.460' N	123° 26.560' W	
DP-40	41° 14.842' N	123° 23.296' W	
DP-44	41° 14.646' N	123° 22.462' W	
DP-45	41° 14.809' N	123° 21.896' W	
DP-48	41° 13.385' N	123° 20.187' W	
DP-49	41° 13.793' N	123° 20.885' W	
Air Hazard	41° 01.550' N	123° 38.760' W	(On Jones Point Fire-South End of Fire)
Indian Rocks (VAR)	41° 12.049' N	123° 25.430' W	Air Hazard - Stay 500' AGL - 1/2 mi. radius
Willow Creek Helibase	40° 57.036' N	123° 38.164' W	
Weaverville Helibase	40° 44.460' N	122° 55.210' W	



Acres: 22,446

Datum: NAD 1983

0 2 1/2 5 10 Miles

	ADD Lines		Dip Site		Incident Command Post		Water Source		Air Hazard		Flight Paths
	No Fly Zone		Drop Point		Landmark		Value at Risk		Check Point		Wilderness
	Sling Site		Helibase		Mobile Weather Unit		Division Break		VAR		Aerial cable
	Camp		Helispot		Repeater		Branch Break		Summits		Military Training Route
	Culvert		Incident Base		Staging Area						