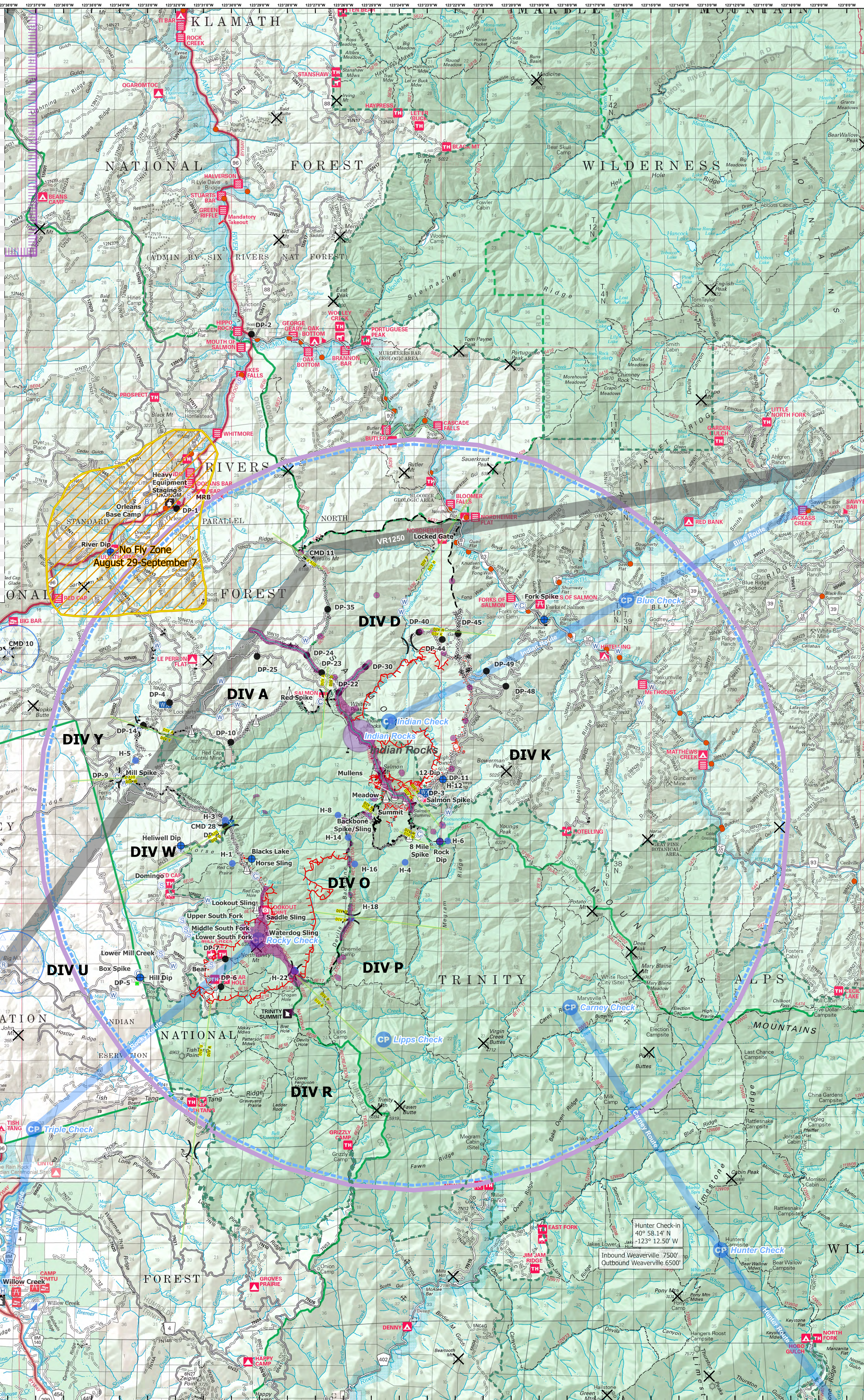


Label	Latitude	Longitude	Notes
Backbone Spike/Sling	41° 09.510' N	123° 25.050' W	
Box Spike	41° 05.627' N	123° 33.332' W	
Fork Spike	41° 17.858' N	123° 21.774' W	
Hill Cap Spike	41° 18.357' N	123° 33.029' W	At DP-9
Orleans Base Camp	41° 13.025' N	123° 26.762' W	Adjacent to DP-4
Red Spike	41° 13.025' N	123° 26.762' W	
Salmon Spike	41° 10.346' N	123° 23.036' W	
Eight Mile Sling	41° 09.392' N	123° 23.355' W	
Horse Sling	41° 08.459' N	123° 29.439' W	
Meadow Sling	41° 10.399' N	123° 24.489' W	
Mullens Sling	41° 10.452' N	123° 24.167' W	
Salmon Ridge Sling	41° 11.255' N	123° 24.803' W	
Summit Sling	41° 10.343' N	123° 23.714' W	
Saddle Sling	41° 07.280' N	123° 28.979' W	
Waterdog Sling	41° 06.575' N	123° 28.768' W	
Lookout Sling	41° 07.402' N	123° 29.108' W	
Mobile Retardant Base	41° 18.480' N	123° 31.490' W	
12 Dip	41° 10.866' N	123° 22.438' W	
Blacks Lake Dip	41° 08.711' N	123° 29.269' W	
Heliwell Dip	41° 09.580' N	123° 24.489' W	
Hill Dip	41° 5.518' N	123° 33.266' W	Adjacent to DP-5
Missouri Dip	41° 15.180' N	123° 18.820' W	
River Dip	41° 17.038' N	123° 34.316' W	
Rock Dip	41° 09.190' N	123° 22.550' W	
South River Dip	41° 14.689' N	123° 36.900' W	
Blue Check	41° 15.700' N	123° 15.872' W	
Carney Check	41° 04.711' N	123° 17.887' W	
Hunter Check	40° 58.140' N	123° 12.500' W	Weaverville Elevation 8000'
Indian Check	41° 12.432' N	123° 24.365' W	
Norton Check	41° 08.348' N	123° 40.818' W	
Rocky Check	41° 06.500' N	123° 28.774' W	
Timber Check	41° 19.477' N	123° 06.307' W	Coming from Willow Creek
Triple Check	41° 03.843' N	123° 37.053' W	
Lipps Check	41° 01.397' N	123° 24.555' W	
H-1	41° 08.600' N	123° 29.968' W	HOGE - Type 2 - Elevation 5900'
H-3	41° 09.765' N	123° 30.210' W	HOGE - Type 2
H-4	41° 08.590' N	123° 23.790' W	HOGE - Type 2 - Elevation 6000'
H-5	41° 11.380' N	123° 33.430' W	HOGE - Type 2
H-6	41° 09.210' N	123° 22.270' W	HOGE - Type 2 - Elevation 6500'
H-8	41° 09.903' N	123° 26.188' W	HOGE - Type 2 - Elevation 4600'
H-12	41° 10.866' N	123° 22.438' W	HOGE - Type 3 - Elevation 4500'
H-14	41° 09.299' N	123° 25.807' W	HOGE - Type 3 - Elevation 5800'
H-16	41° 08.827' N	123° 25.733' W	HOGE - Type 2 - Elevation 5600'
H-18	41° 07.120' N	123° 25.710' W	HOGE - Type 2
H-20	41° 12.458' N	123° 24.331' W	HOGE - Type 2
H-22	41° 05.698' N	123° 27.743' W	HOGE - Type 2 & 3 - Elevation 6500'
DP-1	41° 18.172' N	123° 31.944' W	Adjacent to Orleans Base Camp
DP-2	41° 22.872' N	123° 29.284' W	
DP-3	41° 10.293' N	123° 33.228' W	Adjacent to Salmon Spike
DP-4	41° 12.951' N	123° 32.228' W	
DP-5	41° 05.518' N	123° 33.266' W	
DP-6	41° 05.463' N	123° 30.572' W	
DP-7	41° 06.013' N	123° 30.214' W	
DP-8	41° 09.889' N	123° 30.357' W	CMD 28 located here
DP-9	41° 10.871' N	123° 33.993' W	Adjacent to Hill Cap Spike
DP-10	41° 11.874' N	123° 30.021' W	
DP-11	41° 10.851' N	123° 22.430' W	Adjacent to 12 Dip
DP-14	41° 22.872' N	123° 29.284' W	
DP-22	41° 13.209' N	123° 26.161' W	
DP-23	41° 13.751' N	123° 28.774' W	
DP-24	41° 14.218' N	123° 27.304' W	
DP-25	41° 14.189' N	123° 29.084' W	
DP-30	41° 13.909' N	123° 25.208' W	
DP-35	41° 15.460' N	123° 26.560' W	
DP-40	41° 14.842' N	123° 23.296' W	
DP-41	41° 14.809' N	123° 21.896' W	
DP-45	41° 13.385' N	123° 20.187' W	
DP-48	41° 13.793' N	123° 20.885' W	
Air Hazard	41° 01.550' N	123° 36.760' W	(On Jones Point Fire - South End of Fire)
Indian Rocks (VAR)	41° 12.899' N	123° 36.430' W	Air Hazard - Stay 500' AGL - 1/2 mi. radius
Willow Creek Helibase	40° 57.036' N	123° 36.154' W	
Weaverville Helibase	40° 44.660' N	122° 55.210' W	



No Fly Zone
August 29-September 7

Hunter Check-in
40° 58.14' N
-123° 12.50' W
Inbound Weaverville 7500'
Outbound Weaverville 6500'

28,195 Est. Acres
Acres from IR 09/01/2020 1436

Datum: NAD 1983

0 2 1/2 5 10 Miles

Label Point (Service)	Culvert	Incident Base	Spot Fire	Air Hazard
ADD Lines	Dip Site	Incident Command Post	Staging Area	Check Point
No Fly Zone	Drop Point	Landmark	Water Source	Wilderness
Sling Site	Helibase	Mobile Weather Unit	Value at Risk	Aerial cable
Camp	Helispot	Repeater	Summits	Military Training Route
			Division Break	TFR