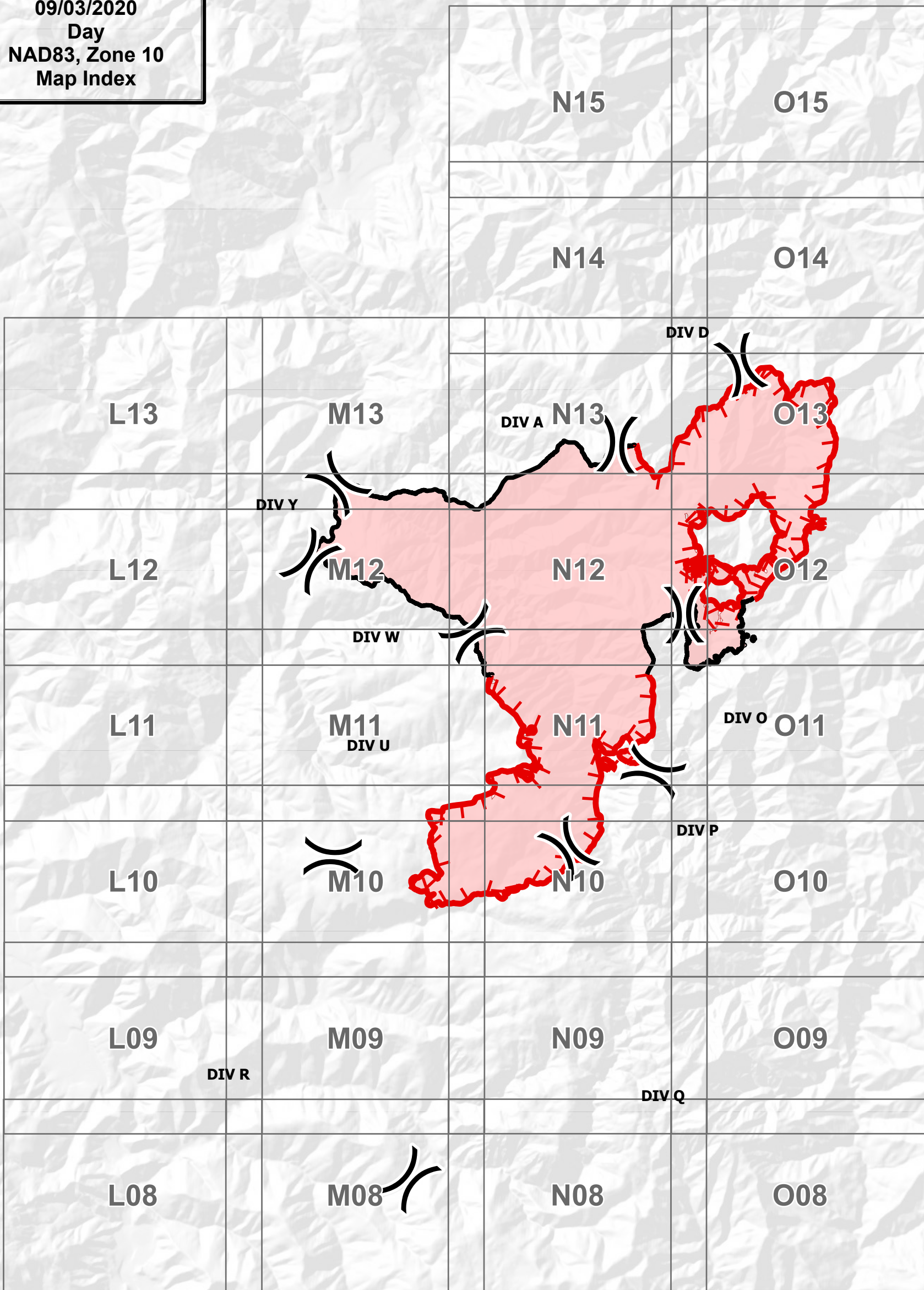


123°42'W 123°40'W 123°38'W 123°36'W 123°34'W 123°32'W 123°30'W 123°28'W 123°26'W 123°24'W 123°22'W 123°20'W 123°18'W

Red Salmon Complex
IAP
CA-SRF-000656
09/03/2020
Day
NAD83, Zone 10
Map Index



41°22'N
41°20'N
41°18'N
41°16'N
41°14'N
41°12'N
41°10'N
41°8'N
41°6'N
41°4'N
41°2'N
41°0'N
40°58'N

41°22'N
41°20'N
41°18'N
41°16'N
41°14'N
41°12'N
41°10'N
41°8'N
41°6'N
41°4'N
41°2'N
41°0'N
40°58'N

123°42'W 123°40'W 123°38'W 123°36'W 123°34'W 123°32'W 123°30'W 123°28'W 123°26'W 123°24'W 123°22'W 123°20'W 123°18'W



QRickit

Use Avenza Maps App



Scan With Avenza Maps Built-In Scanner
Scan With Avenza Maps Built-In Scanner
Scan With Avenza Maps Built-In Scanner

Check it out

Once scanned, all of the IAP Map Tiles will be loaded into Avenza. Avenza Pro License Required

Division Break

Uncontrolled Fire Edge

Contained Line

29,675 Est. Acres

Acres from IR

09/02/2020 1630



0 0.5 1 2 3 Miles

C. Gallagher 9/2/2020 10:06 PM