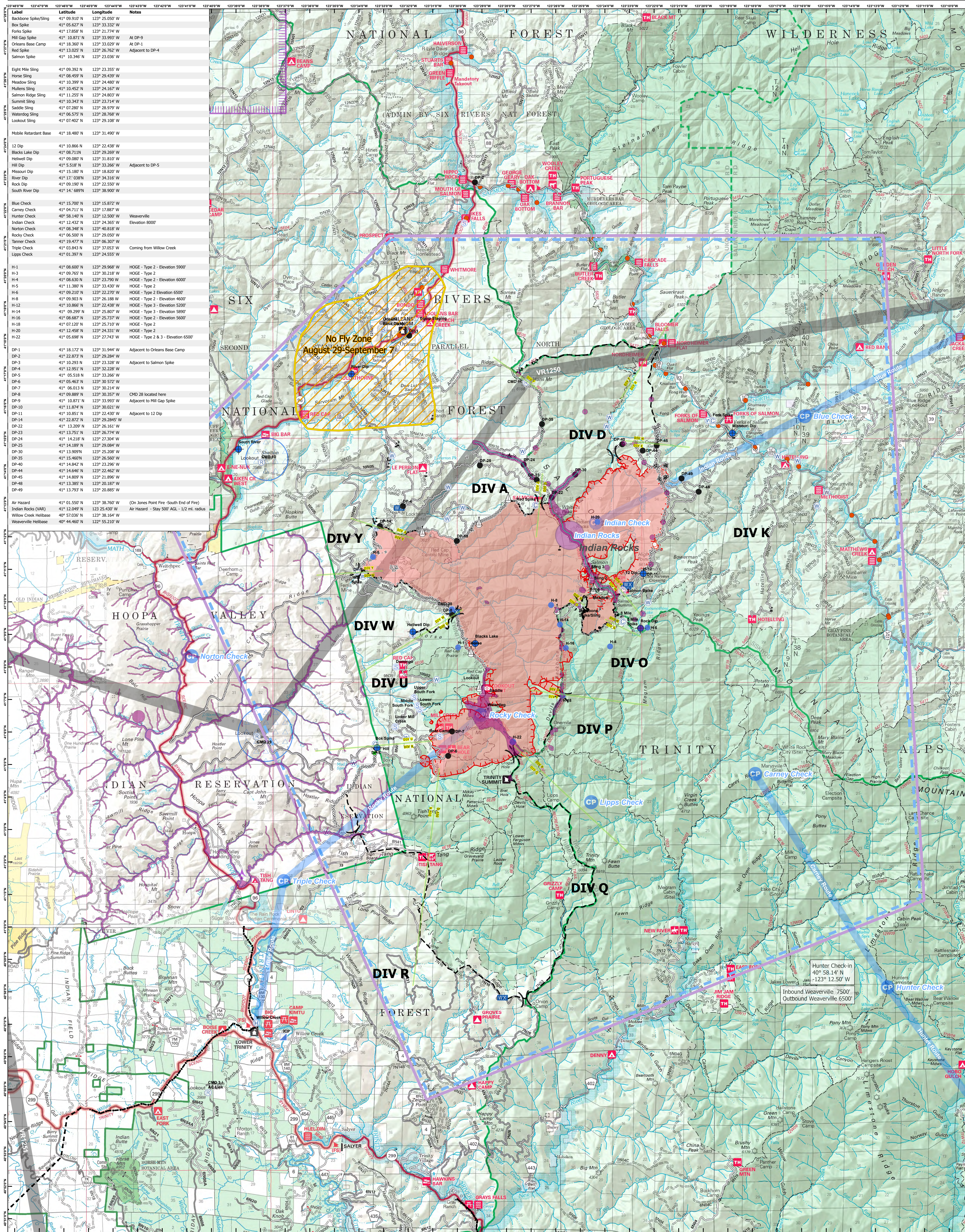


AIR OPERATIONS (OPEN)

RED SALMON COMPLEX

CA-SRF-000656



Label	Latitude	Longitude	Notes
Backbone Spike/Sling	41° 09.510' N	123° 25.050' W	
Box Spike	41° 05.627' N	123° 33.332' W	
Forks Spike	41° 17.858' N	123° 21.774' W	
Hill Gap Spike	41° 16.350' N	123° 26.950' W	At DP-8
Orleans Base Camp	41° 18.367' N	123° 33.020' W	At DP-1
Red Spike	41° 13.025' N	123° 26.762' W	Adjacent to DP-4
Salmon Spike	41° 10.346' N	123° 23.036' W	
Eight Mile Sling	41° 09.392' N	123° 23.355' W	
Horse Sling	41° 08.459' N	123° 25.439' W	
Howlow Sling	41° 10.399' N	123° 24.480' W	
Mullens Sling	41° 10.452' N	123° 24.167' W	
Salmon Ridge Sling	41° 11.255' N	123° 24.803' W	
Summit Sling	41° 10.343' N	123° 23.714' W	
Saddle Sling	41° 07.280' N	123° 28.979' W	
Waterdog Sling	41° 06.575' N	123° 28.768' W	
Lookout Sling	41° 07.402' N	123° 29.108' W	
Mobile Retardant Base	41° 18.480' N	123° 31.490' W	
12 Dip	41° 10.866' N	123° 22.438' W	
Blacks Lake Dip	41° 08.711' N	123° 29.269' W	
Helm Dip	41° 09.807' N	123° 31.810' W	
Hill Dip	41° 5.518' N	123° 33.266' W	Adjacent to DP-5
Missouri Dip	41° 15.180' N	123° 18.820' W	
River Dip	41° 17.038' N	123° 34.316' W	
Rock Dip	41° 09.190' N	123° 22.550' W	
South River Dip	41° 14.689' N	123° 38.900' W	
Blue Check	41° 15.700' N	123° 15.872' W	
Carney Check	41° 04.711' N	123° 17.887' W	
Hunter Check	40° 58.140' N	123° 12.500' W	Weaverville
Indian Check	41° 12.432' N	123° 24.365' W	Elevation 8000'
Norton Check	41° 08.348' N	123° 40.810' W	
Racco Check	41° 08.580' N	123° 28.050' W	
Tanner Check	41° 19.477' N	123° 06.307' W	
Triple Check	41° 03.843' N	123° 37.053' W	Coming from Willow Creek
Lipps Check	41° 01.397' N	123° 24.555' W	
H-1	41° 08.600' N	123° 29.968' W	HOGE - Type 2 - Elevation 5900'
H-3	41° 09.765' N	123° 31.810' W	HOGE - Type 2
H-4	41° 08.530' N	123° 23.790' W	HOGE - Type 2 - Elevation 6000'
H-5	41° 11.380' N	123° 33.430' W	HOGE - Type 2
H-6	41° 09.210' N	123° 22.270' W	HOGE - Type 2 - Elevation 6500'
H-8	41° 09.903' N	123° 26.188' W	HOGE - Type 2 - Elevation 4600'
H-12	41° 10.866' N	123° 22.438' W	HOGE - Type 3 - Elevation 5200'
H-14	41° 09.299' N	123° 25.807' W	HOGE - Type 3 - Elevation 5800'
H-16	41° 08.687' N	123° 27.730' W	HOGE - Type 2 - Elevation 5600'
H-18	41° 07.120' N	123° 25.710' W	HOGE - Type 2
H-20	41° 12.458' N	123° 24.331' W	HOGE - Type 2
H-22	41° 05.698' N	123° 27.243' W	HOGE - Type 2 & 3 - Elevation 6500'
DP-1	41° 18.172' N	123° 31.947' W	Adjacent to Orleans Base Camp
DP-2	41° 22.875' N	123° 28.284' W	
DP-3	41° 10.293' N	123° 33.328' W	Adjacent to Salmon Spike
DP-4	41° 12.951' N	123° 32.228' W	
DP-5	41° 05.518' N	123° 33.266' W	
DP-6	41° 05.463' N	123° 30.572' W	
DP-7	41° 06.013' N	123° 30.214' W	
DP-8	41° 09.807' N	123° 30.357' W	CHD located here
DP-9	41° 10.871' N	123° 33.993' W	Adjacent to Hill Gap Spike
DP-10	41° 11.874' N	123° 30.021' W	
DP-11	41° 10.851' N	123° 22.430' W	Adjacent to 12 Dip
DP-14	41° 22.872' N	123° 29.2845' W	
DP-22	41° 13.209' N	123° 26.161' W	
DP-23	41° 13.251' N	123° 26.770' W	
DP-24	41° 14.218' N	123° 27.304' W	
DP-25	41° 14.189' N	123° 29.084' W	
DP-30	41° 13.909' N	123° 25.208' W	
DP-35	41° 15.460' N	123° 26.560' W	
DP-40	41° 14.842' N	123° 23.296' W	
DP-44	41° 14.800' N	123° 21.896' W	
DP-45	41° 14.800' N	123° 21.896' W	
DP-48	41° 13.385' N	123° 20.187' W	
DP-49	41° 13.793' N	123° 20.885' W	
Air Hazard	41° 01.550' N	123° 36.760' W	(On Jones Point Fire - South End of Fire)
Indian Rocks (VAR)	41° 12.840' N	123° 36.164' W	Air Hazard - Stay 500' AGL - 1/2 mi. radius
Willow Creek Helibase	40° 57.036' N	123° 36.164' W	
Weaverville Helibase	40° 44.460' N	123° 55.210' W	

No Fly Zone
August 29-September 7

Hunter Check-in
40° 58.141' N
-123° 12.50' W
Inbound Weaverville 7500'
Outbound Weaverville 6500'

30,848 Est. Acres
Acres from IR
09/03/2020 1030

Datum: NAD 1983

- ADD Lines
- No Fly Zone
- Sling Site
- Camp
- Culvert
- Dip Site
- Landmark
- Helibase
- Helispot
- Incident Base
- Incident Command Post
- Mobile Weather Unit
- Repeater
- Spot Fire
- Staging Area
- Water Source
- Value at Risk
- Division Break
- Flight Paths
- Air Hazard
- Check Point
- VAR
- Military Training Route
- TFR
- Aerial cable