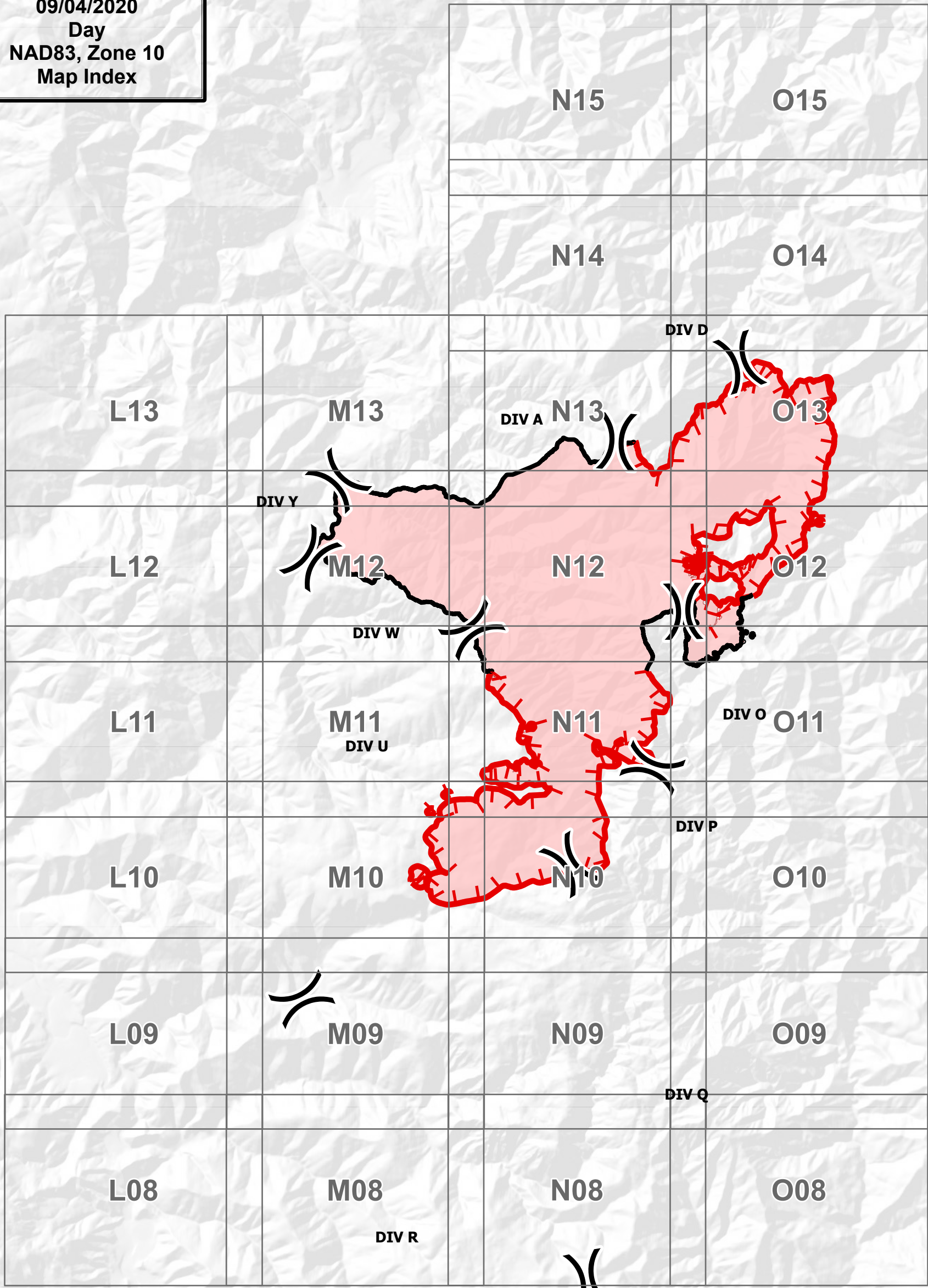


123°42'W 123°40'W 123°38'W 123°36'W 123°34'W 123°32'W 123°30'W 123°28'W 123°26'W 123°24'W 123°22'W 123°20'W 123°18'W

Red Salmon Complex
IAP
CA-SRF-000656
09/04/2020
Day
NAD83, Zone 10
Map Index



41°22'N
41°20'N
41°18'N
41°16'N
41°14'N
41°12'N
41°10'N
41°8'N
41°6'N
41°4'N
41°2'N
41°0'N
40°58'N

41°22'N
41°20'N
41°18'N
41°16'N
41°14'N
41°12'N
41°10'N
41°8'N
41°6'N
41°4'N
41°2'N
41°0'N
40°58'N

123°42'W 123°40'W 123°38'W 123°36'W 123°34'W 123°32'W 123°30'W 123°28'W 123°26'W 123°24'W 123°22'W 123°20'W 123°18'W

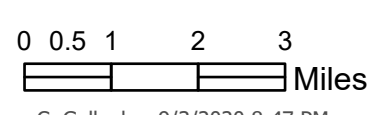


Check it out

Once scanned, all of the IAP Map Tiles will be loaded into Avenza. Avenza Pro License Required

- Division Break
- Uncontrolled Fire Edge
- Contained Line

30,848 Est. Acres
Acres from IR
09/03/2020 1030



C. Gallagher 9/3/2020 8:47 PM