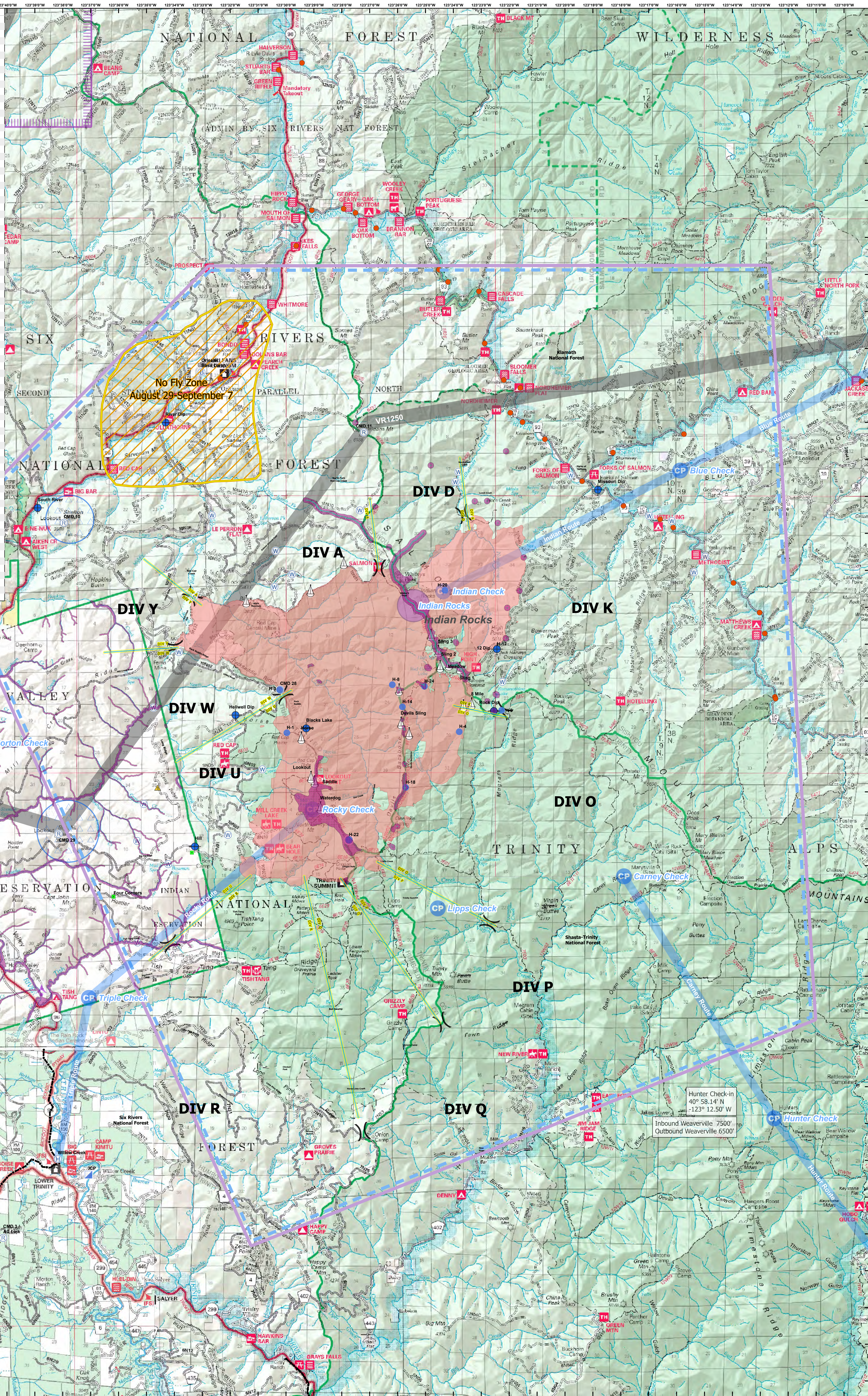


Label	Latitude	Longitude	Notes
Backbone Spike/Sling	41° 09.510' N	123° 25.050' W	
Box Spike	41° 05.627' N	123° 33.332' W	
Forks Spike	41° 17.858' N	123° 21.774' W	
Hill Gap Spike	41° 18.367' N	123° 24.893' W	At DP-9
Orleans Base Camp	41° 18.367' N	123° 33.026' W	At DP-1
Red Spike	41° 13.025' N	123° 26.762' W	Adjacent to DP-4
Salmon Spike	41° 10.346' N	123° 23.036' W	
Eight Mile Sling	41° 09.392' N	123° 23.355' W	
Horse Sling	41° 08.459' N	123° 29.439' W	
Headlow Sling	41° 10.399' N	123° 24.480' W	
Mullens Sling	41° 10.452' N	123° 24.167' W	
Salmon Ridge Sling	41° 11.255' N	123° 24.803' W	
Summit Sling	41° 10.343' N	123° 23.714' W	
Saddle Sling	41° 07.280' N	123° 28.979' W	
Waterdog Sling	41° 06.575' N	123° 28.768' W	
Lookout Sling	41° 07.402' N	123° 29.108' W	
Mobile Retardant Base	41° 18.480' N	123° 31.490' W	
12 Dip	41° 10.866' N	123° 22.438' W	
Blacks Lake Dip	41° 08.713' N	123° 29.269' W	
Hellwell Dip	41° 09.807' N	123° 31.819' W	
Hill Dip	41° 5.518' N	123° 33.266' W	Adjacent to DP-5
Missouri Dip	41° 15.180' N	123° 18.820' W	
River Dip	41° 17.038' N	123° 34.316' W	
Rock Dip	41° 09.190' N	123° 22.550' W	
South River Dip	41° 14.689' N	123° 36.900' W	
Blue Check	41° 15.700' N	123° 15.872' W	
Carney Check	41° 04.711' N	123° 17.887' W	
Hunter Check	40° 58.140' N	123° 12.500' W	Weaverville Elevation 8000'
Indian Check	41° 12.432' N	123° 24.365' W	
Norton Check	41° 08.348' N	123° 40.819' W	
Rocky Check	41° 18.687' N	123° 26.050' W	
Tanner Check	41° 19.477' N	123° 06.307' W	
Triple Check	41° 03.843' N	123° 37.053' W	Coming from Willow Creek
Lipps Check	41° 01.397' N	123° 24.555' W	
H-1	41° 08.600' N	123° 29.968' W	HOGE - Type 2 - Elevation 5900'
H-3	41° 09.750' N	123° 30.819' W	HOGE - Type 2
H-4	41° 08.730' N	123° 23.790' W	HOGE - Type 2 - Elevation 6000'
H-5	41° 11.380' N	123° 33.430' W	HOGE - Type 2
H-6	41° 09.210' N	123° 22.270' W	HOGE - Type 2 - Elevation 6500'
H-8	41° 09.903' N	123° 26.188' W	HOGE - Type 2 - Elevation 4600'
H-12	41° 10.866' N	123° 22.438' W	HOGE - Type 3 - Elevation 5200'
H-14	41° 09.299' N	123° 25.807' W	HOGE - Type 3 - Elevation 5890'
H-16	41° 08.687' N	123° 26.731' W	HOGE - Type 2 - Elevation 5600'
H-18	41° 07.100' N	123° 25.710' W	HOGE - Type 2
H-20	41° 12.458' N	123° 24.331' W	HOGE - Type 2
H-22	41° 05.698' N	123° 27.743' W	HOGE - Type 2 & 3 - Elevation 6500'
DP-1	41° 18.172' N	123° 31.944' W	Adjacent to Orleans Base Camp
DP-2	41° 22.872' N	123° 29.284' W	
DP-3	41° 10.293' N	123° 33.328' W	Adjacent to Salmon Spike
DP-4	41° 12.951' N	123° 32.228' W	
DP-5	41° 05.518' N	123° 33.266' W	
DP-6	41° 05.463' N	123° 30.572' W	
DP-7	41° 06.013' N	123° 30.214' W	
DP-8	41° 08.989' N	123° 30.357' W	CMD 28 located here
DP-9	41° 10.871' N	123° 33.993' W	Adjacent to Hill Gap Spike
DP-10	41° 11.874' N	123° 30.021' W	
DP-11	41° 10.851' N	123° 22.430' W	Adjacent to 12 Dip
DP-14	41° 22.872' N	123° 29.284' W	
DP-22	41° 13.209' N	123° 26.161' W	
DP-23	41° 13.751' N	123° 26.774' W	
DP-24	41° 14.218' N	123° 27.304' W	
DP-25	41° 14.189' N	123° 29.084' W	
DP-30	41° 13.909' N	123° 25.208' W	
DP-35	41° 15.400' N	123° 26.560' W	
DP-40	41° 14.842' N	123° 23.296' W	
DP-44	41° 14.846' N	123° 24.420' W	
DP-45	41° 14.809' N	123° 21.896' W	
DP-48	41° 13.385' N	123° 20.187' W	
DP-49	41° 13.793' N	123° 20.885' W	
Air Hazard	41° 01.550' N	123° 36.760' W	(On Jones Point Fire - South End of Fire)
Indian Rocks (VAR)	41° 12.240' N	123° 26.430' W	Air Hazard - Stay 500' AGL - 1/2 mi. radius
Willow Creek Helibase	40° 57.036' N	123° 36.154' W	
Weaverville Helibase	40° 44.460' N	123° 55.210' W	



39,149 Est. Acres
Acres from IR
09/05/2020 2330

Datum: NAD 1983

0 2 1/2 5 10 Miles

Aircraft Div Delineator	Helibase	Landmark	Division Break	Flight Paths
No Fly Zone	Helispot	Repeater	Air Hazard	TFR
Sling Site	Incident Base	Safety Zone	Check Point	Aerial cable
Dip Site	Incident Command Post	Water Source	VAR	Military Training Route

Use the Avenca Maps App