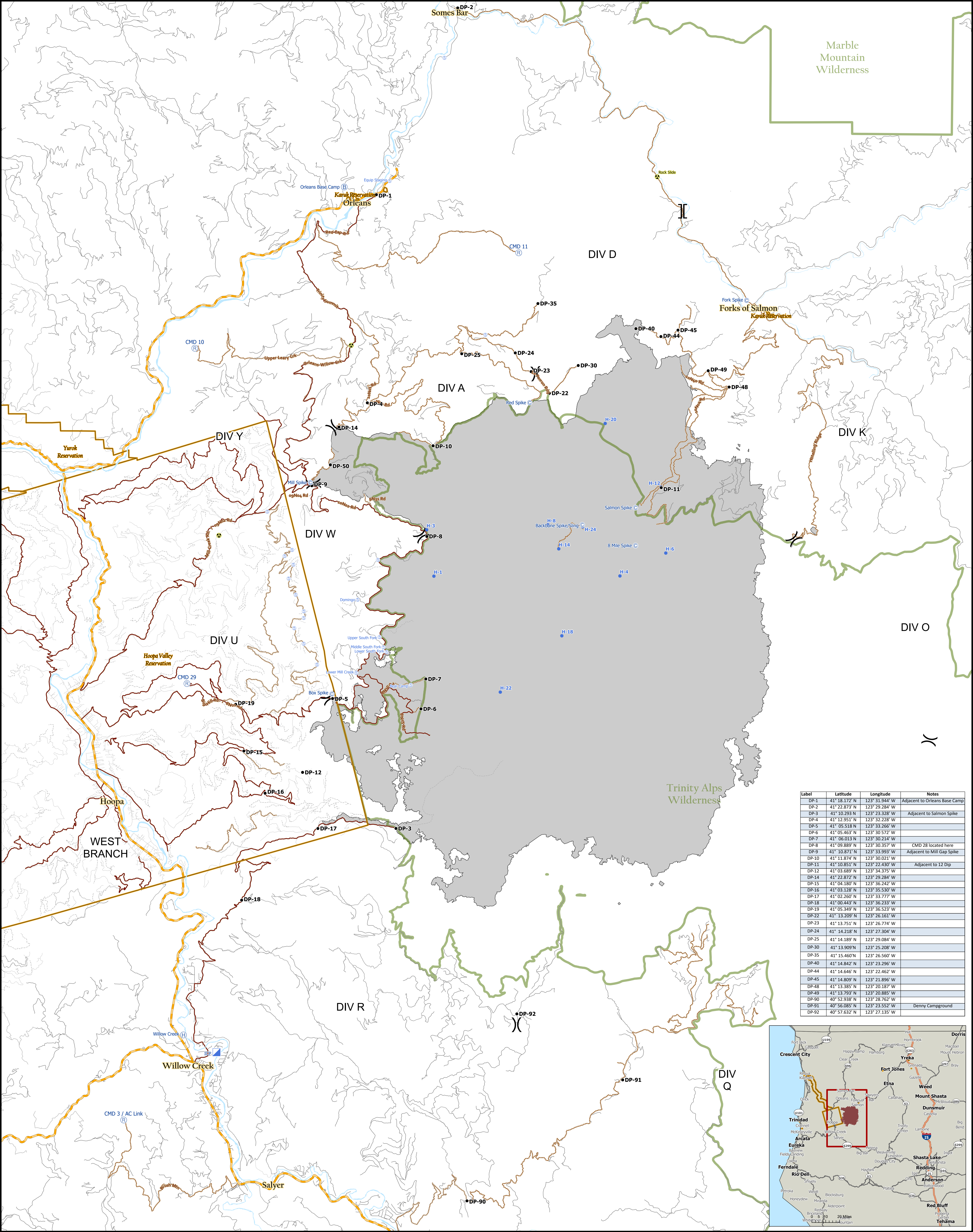
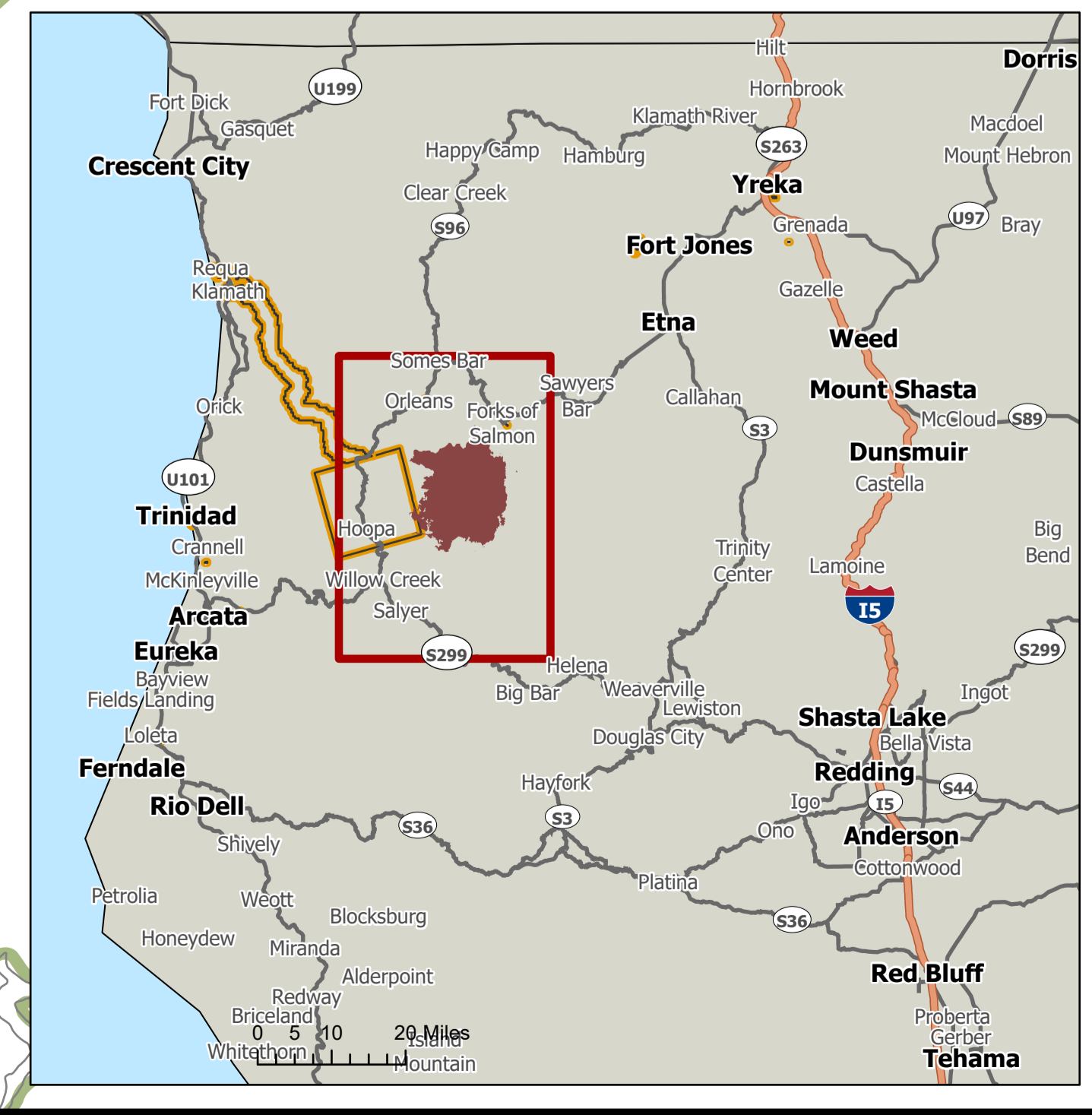


Marble Mountain Wilderness



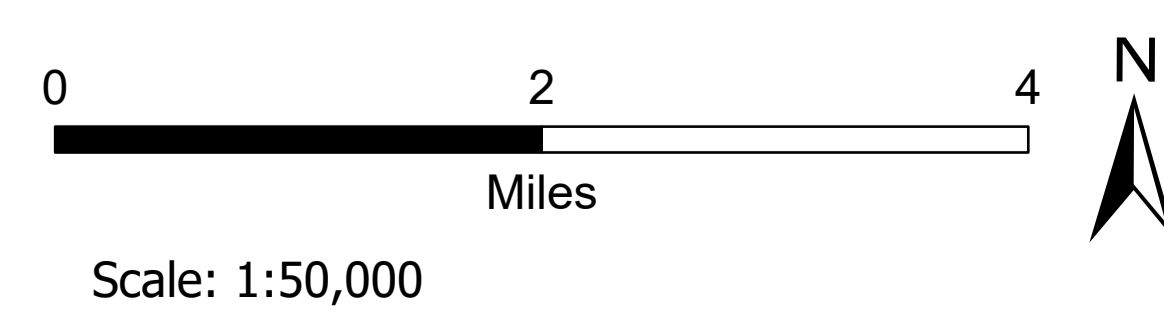
Label	Latitude	Longitude	Notes
DP-1	41° 18.172' N	123° 31.944' W	Adjacent to Orleans Base Camp
DP-2	41° 22.873' N	123° 29.284' W	Adjacent to Salmon Spike
DP-3	41° 10.293' N	123° 23.328' W	
DP-4	41° 12.951' N	123° 32.228' W	
DP-5	41° 05.518' N	123° 33.266' W	
DP-6	41° 05.463' N	123° 30.572' W	
DP-7	41° 06.013' N	123° 30.214' W	CMD 28 located here
DP-8	41° 09.889' N	123° 30.357' W	
DP-9	41° 10.871' N	123° 33.993' W	Adjacent to Mill Gap Spike
DP-10	41° 11.874' N	123° 30.021' W	
DP-11	41° 10.851' N	123° 22.430' W	Adjacent to 12 Dip
DP-12	41° 03.689' N	123° 34.375' W	
DP-14	41° 22.872' N	123° 29.284' W	
DP-15	41° 04.180' N	123° 36.242' W	
DP-16	41° 03.128' N	123° 35.530' W	
DP-17	41° 02.260' N	123° 33.777' W	
DP-18	41° 00.443' N	123° 36.233' W	
DP-19	41° 05.349' N	123° 36.523' W	
DP-22	41° 13.209' N	123° 26.161' W	
DP-23	41° 13.751' N	123° 26.774' W	
DP-24	41° 14.218' N	123° 27.304' W	
DP-25	41° 14.189' N	123° 29.084' W	
DP-30	41° 13.909' N	123° 25.208' W	
DP-35	41° 15.460' N	123° 26.560' W	
DP-40	41° 14.842' N	123° 23.296' W	
DP-44	41° 14.646' N	123° 22.462' W	
DP-45	41° 14.809' N	123° 21.896' W	
DP-48	41° 13.385' N	123° 20.187' W	
DP-49	41° 13.793' N	123° 20.885' W	
DP-90	40° 52.938' N	123° 28.762' W	
DP-91	40° 56.085' N	123° 23.552' W	Denny Campground
DP-92	40° 57.632' N	123° 27.135' W	



Transportation Map
Red Salmon Complex
 CA-SRF-000656
 09/15/2020

91,743 est. Acres
 from 09/13/2020 2030 IR

- Camp
- Drop Point
- Hazard
- Helibase
- Helispot
- Incident Base
- Incident Command Post
- Repeater
- Staging Area
- River
- Roads
- Roads
-)(Division Break
- || Branch Break
- Hoopa Roads Type:
 - Arterial
 - Improved
 - Unimproved



Scale: 1:50,000