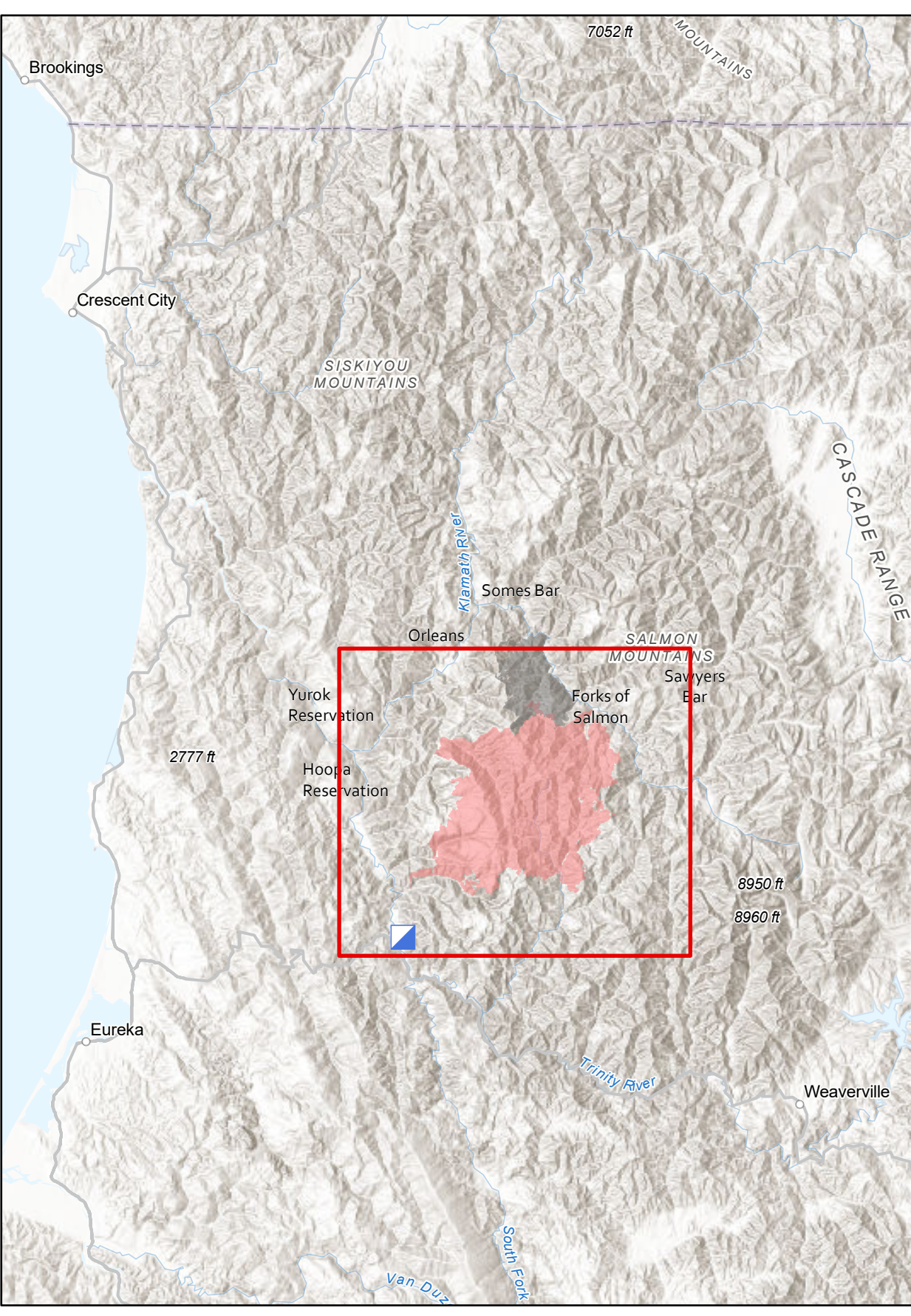


**Public Information Map**  
**Red Salmon Complex**  
**CA-SRF-000656**  
**10/01/2020**



- Legend**
- Incident Command Post
  - Division Break
  - Wildfire Perimeter
  - Shasta-Trinity National Forest Fire Area Closure
  - Road Closures
  - Uncontrolled Fire Edge
  - Contained Line
  - Butler Fire

**All National Forest System Lands within the Six Rivers & Klamath National Forests are closed to Public Access.**

