

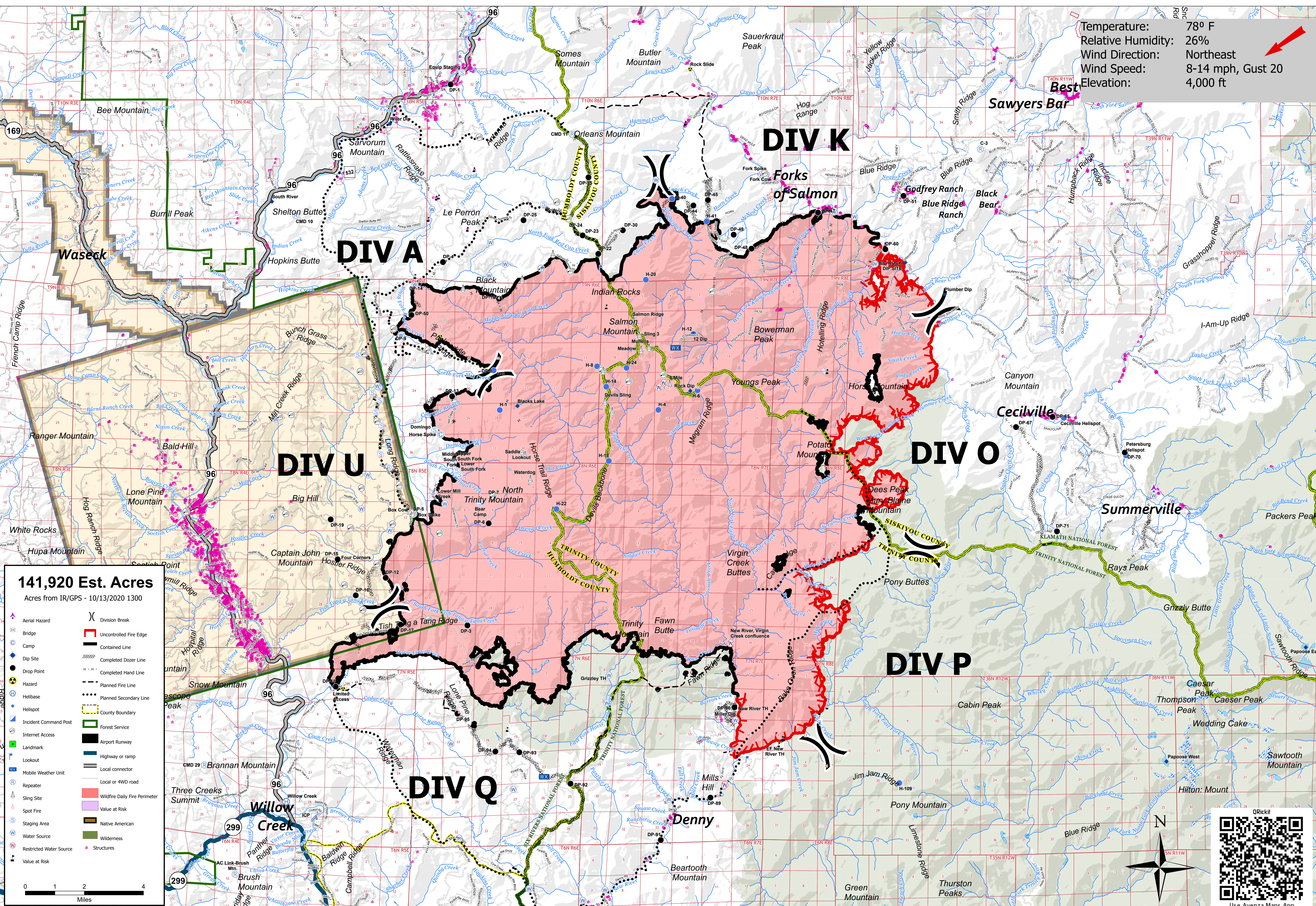
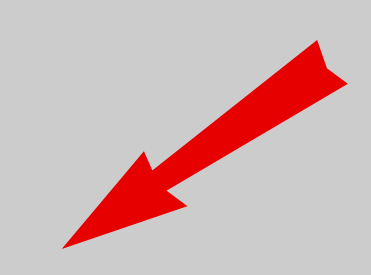
# RED SALMON COMPLEX

# CA-SRF-000656

10/14/2020



Temperature: 78° F  
Relative Humidity: 26%  
Wind Direction: Northeast  
Wind Speed: 8-14 mph, Gust 20  
Elevation: 4,000 ft



**141,920 Est. Acres**  
Acres from IR/GPS - 10/13/2020 1300


0 1 2 4 Miles

Use Avenza Maps App