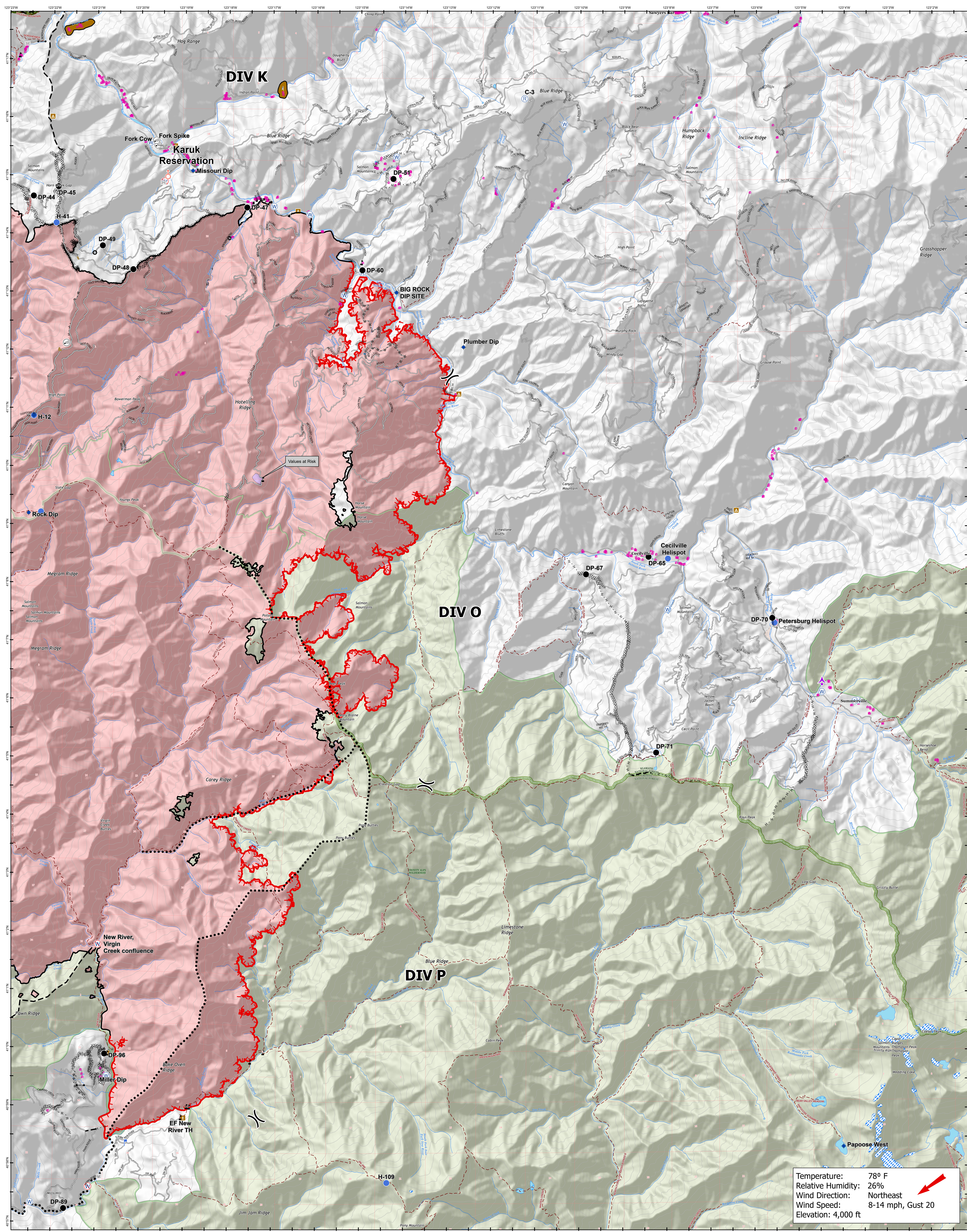


RED SALMON COMPLEX CA-SRF-000656 10/14/2020



Temperature: 78° F
Relative Humidity: 26%
Wind Direction: Northeast
Wind Speed: 8-14 mph, Gust 20
Elevation: 4,000 ft

141,920 Est. Acres
Acres from IR/GPS 10/13/2020 1300
Scale: 1:38,000
Datum: NAD 1983

Aerial Hazard	Gate	Water Source	Native American Reservation	Access or Improved Road	Roads	Campground	Cabin
Bridge	Helispot	Restricted Water Source	Access or Improved Road	Planned Fire Line	Wildfire Daily Fire Perimeter	Recreation Site	Shelter
Camp	Internet Access	Value at Risk	Planned Secondary Line	Repair Line	Value at Risk	Headquarters	Trailhead
Culvert	Lookout	Division Break	Completed Dozer Line	Other	National Forest Boundary	Ranger Station	Picnic Area
Dip Site	Repeater	Building	Completed Hand Line	Trails	Wilderness Area	Visitor/Information Center	BIA
Drop Point	Spot Fire		Road as Completed Line				

NORTHWEST INCIDENT MANAGEMENT TEAM

QR code

FOREST SERVICE
U.S. DEPARTMENT OF AGRICULTURE