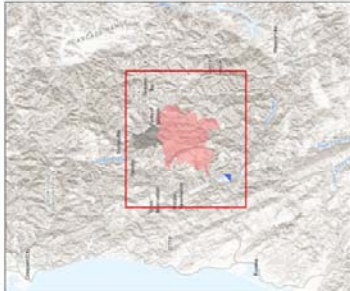


Public Information Map
Red Salmon Complex
CA-SRF-000656
10/14/2020



- Legend**
- Incident Command Post
 - Division Break
 - Wildfire Perimeter
 - National Forest Fire Area Closures
 - Road Closures
 - Uncontrolled Fire Edge
 - Contained Line
 - Butler Fire

Portions of the National Forests are open for public use. Contact: <https://www.fs.usda.gov/> or <https://www.fs.usda.gov/srmf> or <https://www.fs.usda.gov/stmf>

0 1 2 4 Miles

