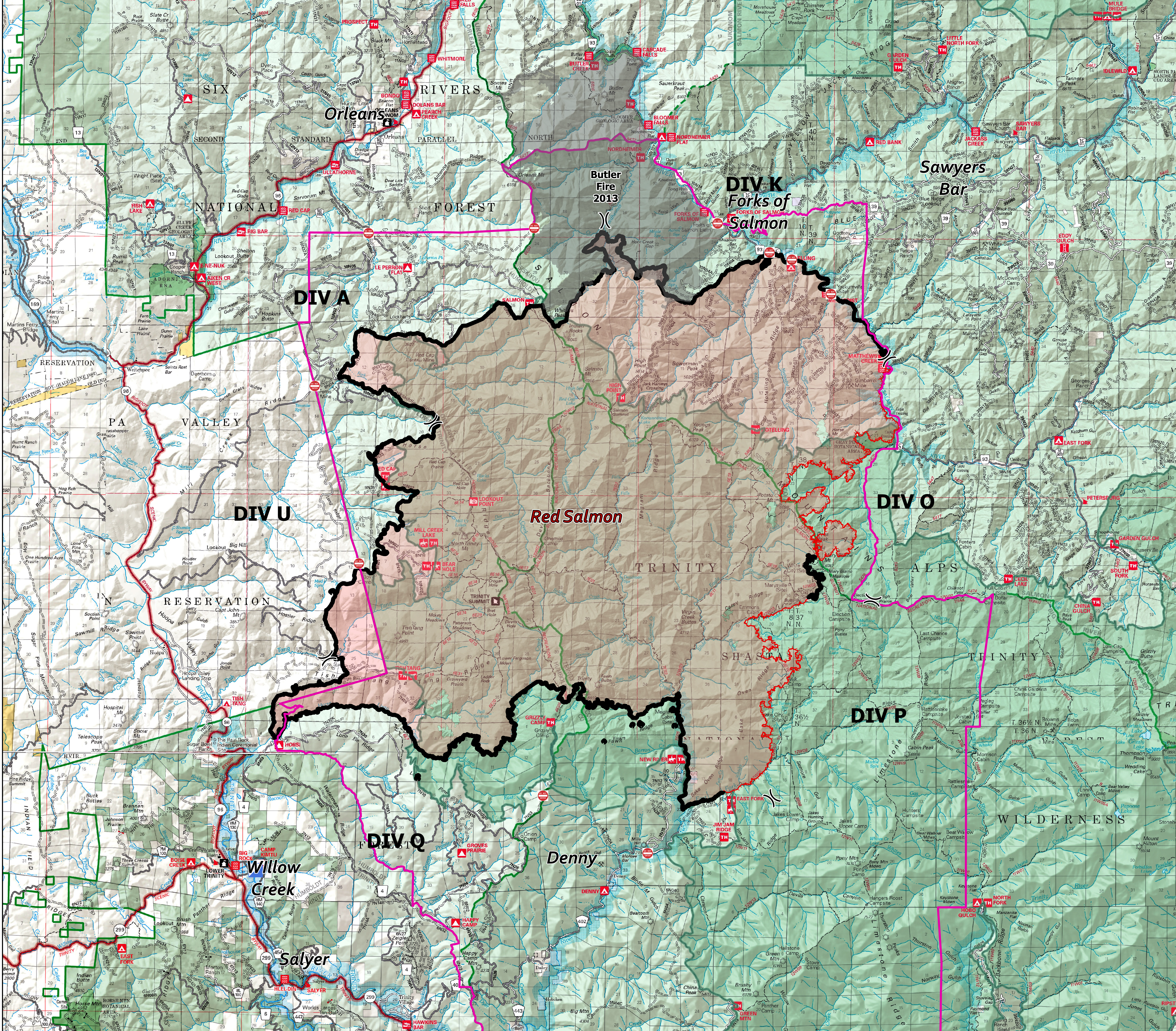
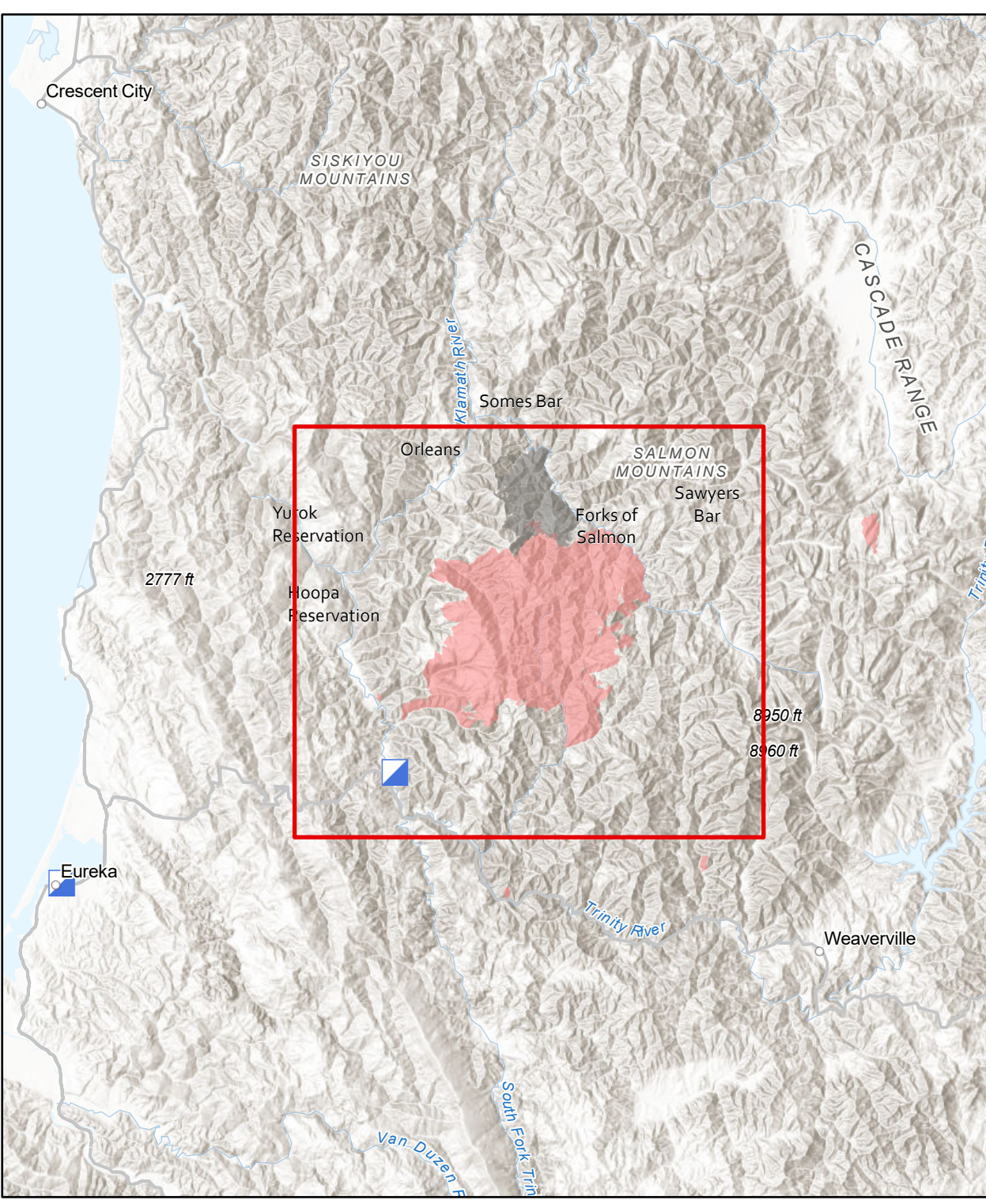


Public Information Map
Red Salmon Complex
CA-SRF-000656
October 19, 2020



- Legend**
- Wildfire Perimeter
 - National Forest Fire Area Closures
 - Road Closures
 - Uncontrolled Fire Edge
 - Contained Line
 - Butler Fire
 - Event Point
 - FC Point Type
 - Incident Command Post
 - Event Point
 - (Division Break)

Portions of the National Forests are open for public use. Contact:
<https://www.fs.usda.gov/klamath>
 or
<https://www.fs.usda.gov/srnf>
 or
<https://www.fs.usda.gov/stnf>

0 1 2 4
 Miles