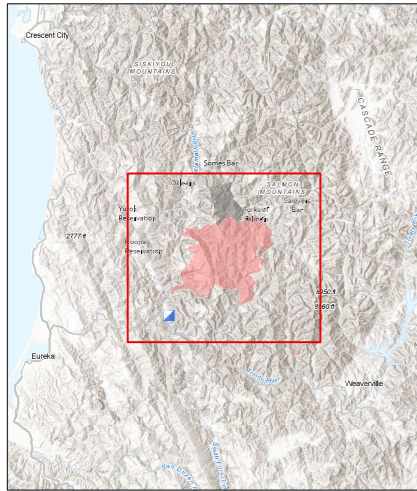


Public Information Map

Red Salmon Complex

CA-SRF-000656

October 20, 2020



- Legend**
- Wildfire Perimeter
 - National Forest Fire Area Closures
 - Road Closures
 - Uncontrolled Fire Edge
 - Contained Line
 - Butler Fire
 - Event Point
 - FC Point Type
 - Incident Command Post
 - Event Point
 - Division Break

Portions of the National Forests are open for public use. Contact: <https://www.fs.usda.gov/klamath> or <https://www.fs.usda.gov/srnf> or <https://www.fs.usda.gov/stnf>

