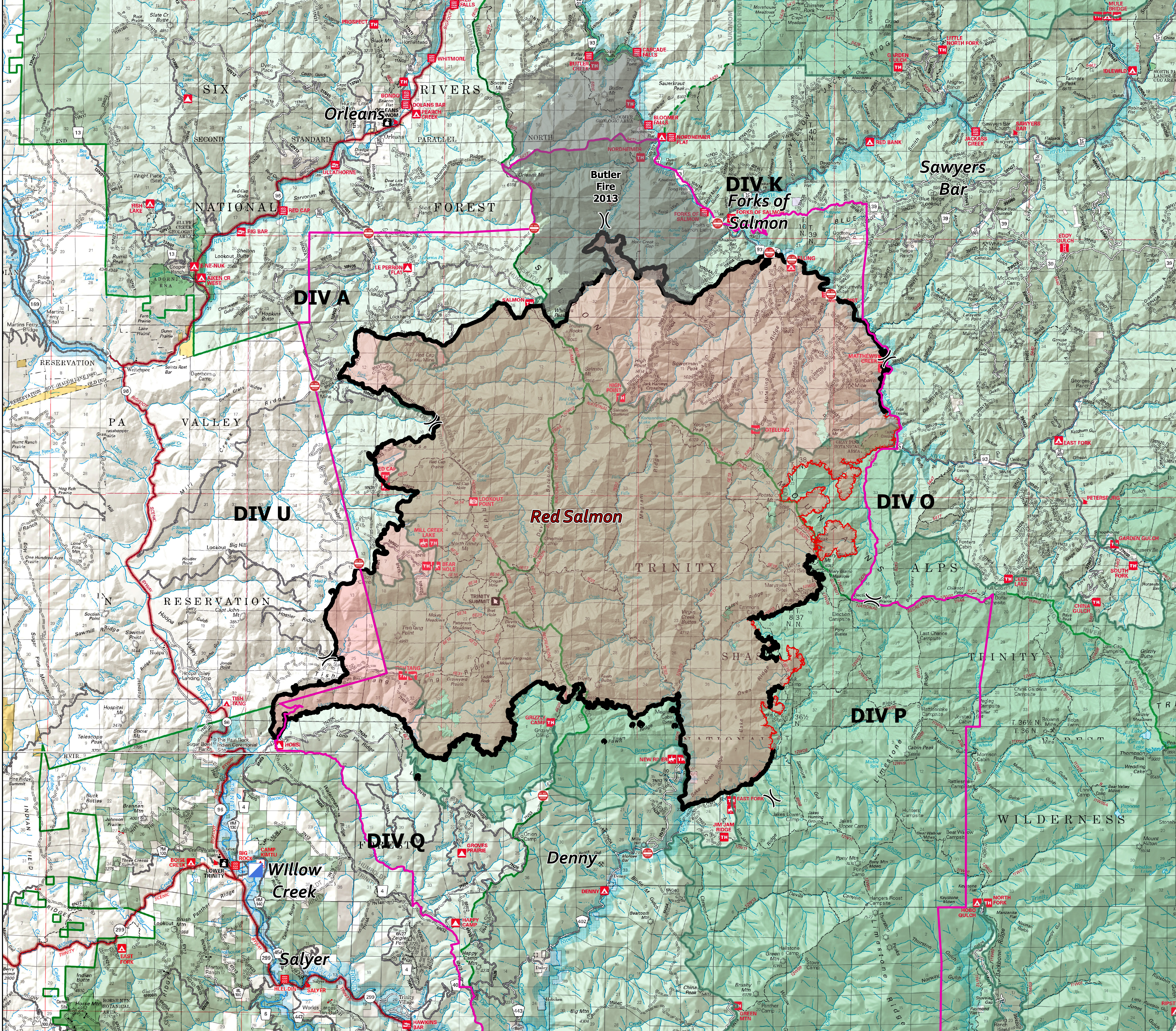
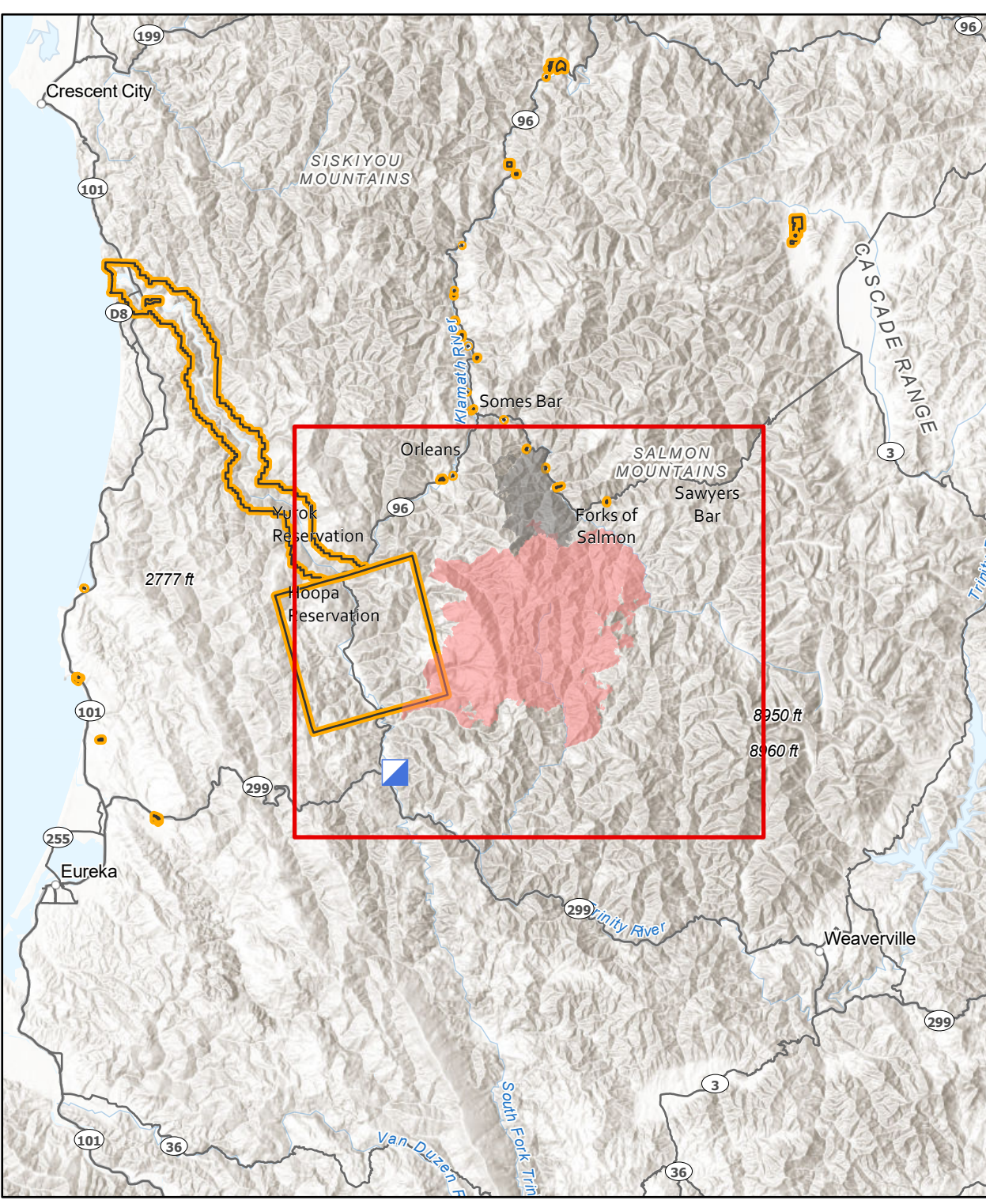


**Public Information Map**  
**Red Salmon Complex**  
**CA-SRF-000656**  
**October 25, 2020**



- Data Reference & Symbology**
- Wildfire Perimeter
  - National Forest Fire Area Closures
  - Road Closures
  - Uncontrolled Fire Edge
  - Contained Line
  - Butler Fire
  - Incident Command Post
  - Division Break

Portions of the National Forests are open for public use. Contact:  
<https://www.fs.usda.gov/klamath>  
 or  
<https://www.fs.usda.gov/srnf>  
 or  
<https://www.fs.usda.gov/stnf>

