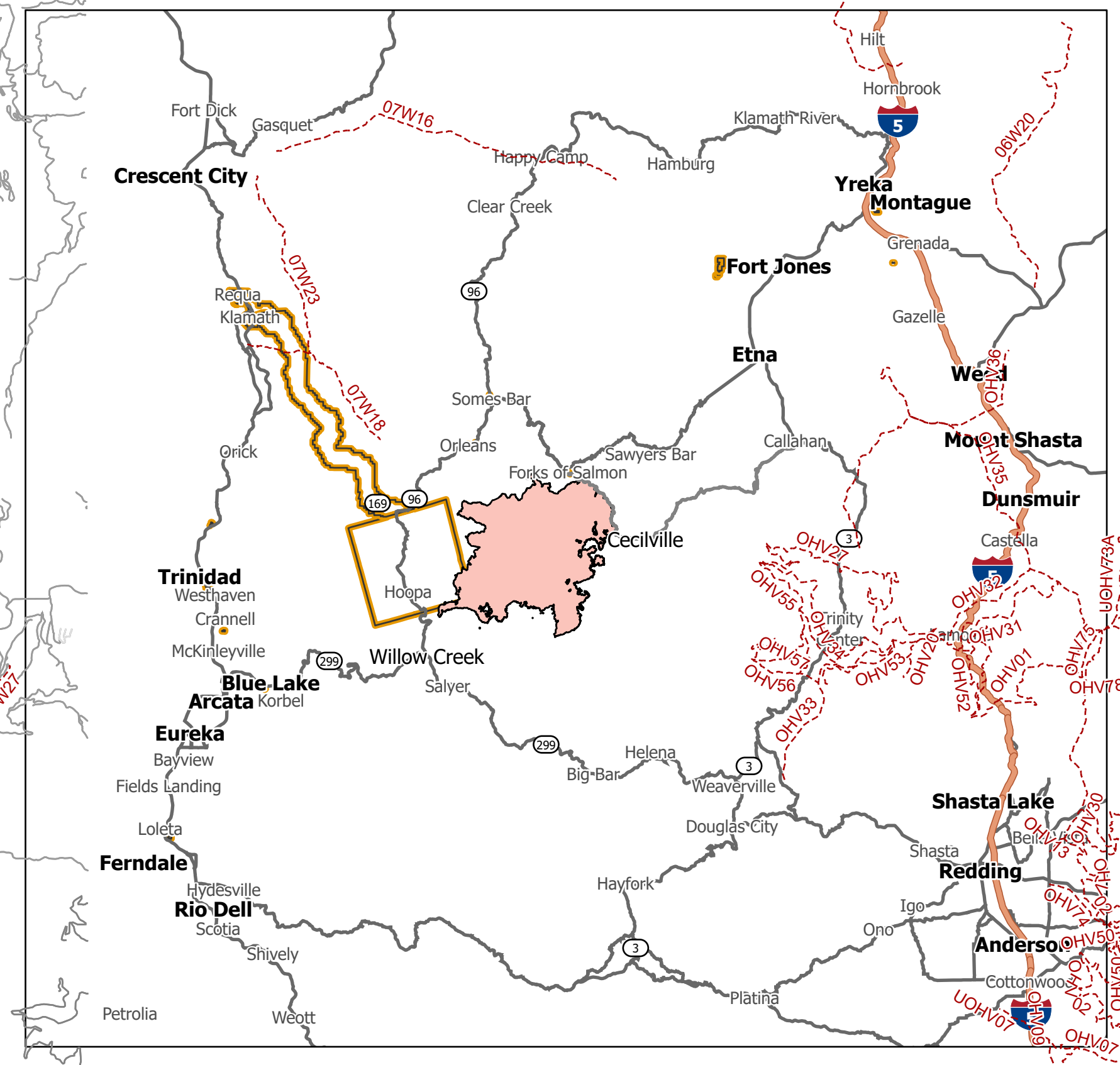


Label	Latitude	Longitude	Notes
DP-1	41° 18.172' N	123° 31.944' W	Adjacent to Orleans Base Camp
DP-2	41° 22.873' N	123° 29.284' W	
DP-3	41° 10.293' N	123° 23.228' W	Adjacent to Salmon Spike
DP-4	41° 12.951' N	123° 32.398' W	
DP-5	41° 05.518' N	123° 35.866' W	
DP-6	41° 05.463' N	123° 30.572' W	
DP-7	41° 06.013' N	123° 30.214' W	
DP-8	41° 09.889' N	123° 38.357' W	CMD 28 located here
DP-9	41° 10.871' N	123° 33.993' W	Adjacent to Mill Gap Spike
DP-10	41° 11.874' N	123° 30.021' W	
DP-11	41° 03.689' N	123° 34.375' W	
DP-12	41° 08.994' N	123° 31.828' W	
DP-13	41° 22.872' N	123° 29.284' W	
DP-14	41° 04.180' N	123° 36.242' W	
DP-15	41° 03.128' N	123° 35.530' W	
DP-16	41° 02.260' N	123° 33.777' W	
DP-17	41° 00.443' N	123° 36.233' W	
DP-18	41° 05.349' N	123° 36.523' W	
DP-19	41° 13.209' N	123° 26.161' W	
DP-20	41° 13.751' N	123° 26.774' W	
DP-21	41° 14.218' N	123° 27.304' W	
DP-22	41° 14.189' N	123° 29.084' W	
DP-23	41° 13.909' N	123° 25.208' W	
DP-24	41° 15.460' N	123° 26.560' W	
DP-25	41° 14.646' N	123° 22.462' W	
DP-26	41° 14.809' N	123° 21.896' W	
DP-27	41° 14.503' N	123° 12.574' W	
DP-28	41° 13.385' N	123° 20.187' W	
DP-29	41° 13.793' N	123° 20.885' W	
DP-30	41° 11.380' N	123° 33.430' W	
DP-31	41° 14.952' N	123° 14.269' W	
DP-32	41° 13.379' N	123° 14.967' W	
DP-33	41° 08.460' N	123° 08.441' W	
DP-34	41° 08.157' N	123° 09.862' W	
DP-35	41° 07.413' N	123° 05.625' W	
DP-36	41° 05.092' N	123° 08.261' W	
DP-37	40° 57.228' N	123° 21.702' W	
DP-38	40° 52.938' N	123° 28.762' W	
DP-39	40° 56.085' N	123° 23.552' W	Denny Campground
DP-40	40° 57.632' N	123° 27.135' W	
DP-41	40° 58.536' N	123° 29.132' W	
DP-42	40° 58.504' N	123° 30.056' W	
DP-43	40° 59.659' N	123° 31.544' W	
DP-44	40° 59.889' N	123° 20.785' W	



Transportation
 Red Salmon Complex
 CA-SRF-000656
 October 26, 2020



143,698 est. Acres
 Acres from IR/OPS
 10/24/2020 2025
 Scale: 1:92,500



TRANSPORTATION
 Red Salmon Complex
 CA-SRF-000656
 October 26, 2020



- Bridge
- Camp
- Culvert
- Dip Site
- Drop Point
- Gate
- Helibase
- Helispot
- Incident Command Post
- Repeater
- Staging Area
- Division Break
- Highways
- Arterials
- Improved
- Unimproved
- Road Selected
- Trails
- Local connector
- Local or 4WD road
- Reservation Boundary
- Airport Runway

Transportation
 Red Salmon Complex
 CA-SRF-000656
 October 26, 2020