

123°29'W 123°28'W 123°27'W 123°26'W 123°25'W 123°24'W 123°23'W

Red Salmon Fire
Heat Acres: 3,315
CA-SRF-000643
Infrared Interpretation
Imagery Date:
2020/08/03 2226 Hrs

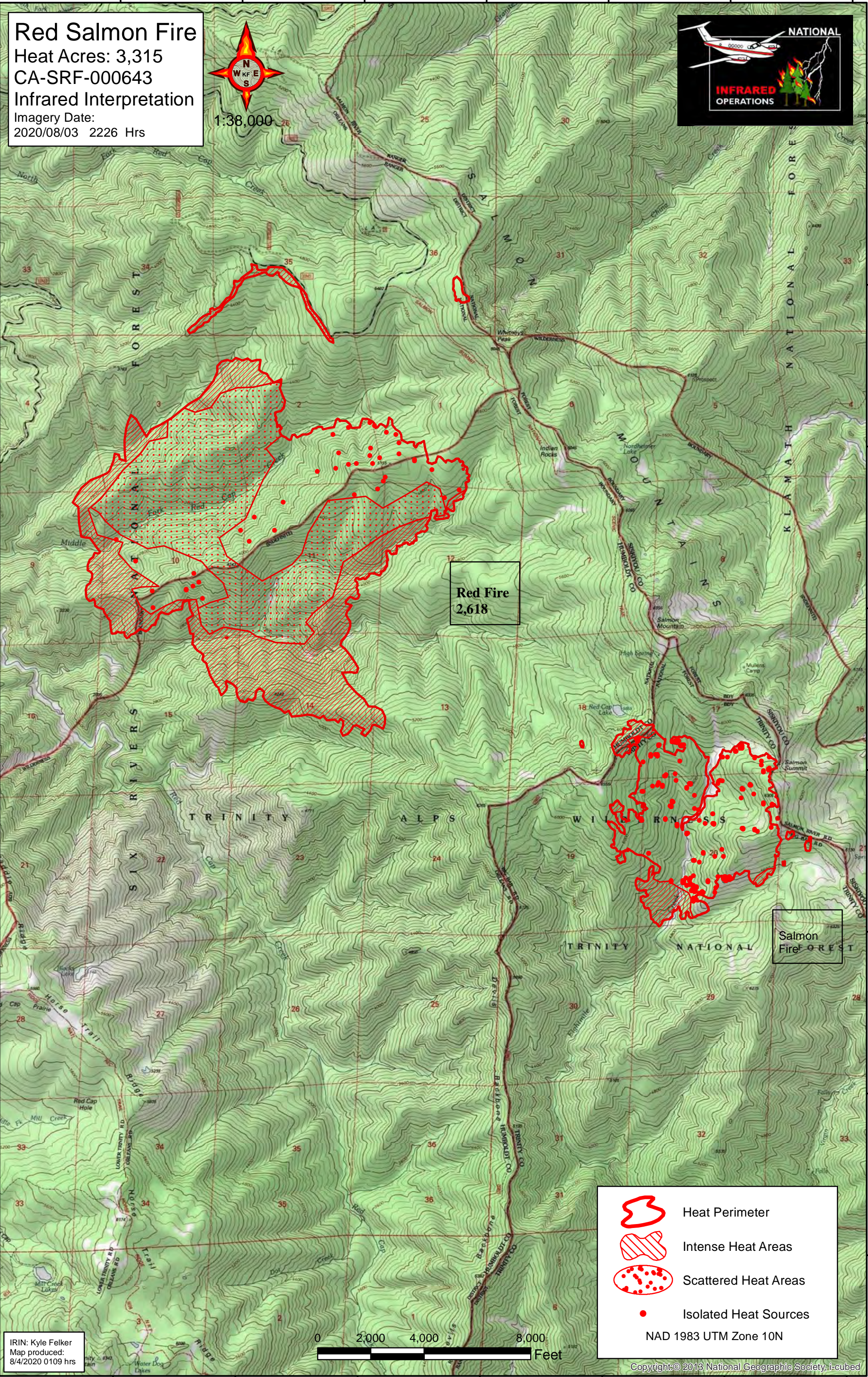


1:38,000







41°14'N
41°13'N
41°12'N
41°11'N
41°10'N
41°9'N
41°8'N
41°7'N

41°14'N
41°13'N
41°12'N
41°11'N
41°10'N
41°9'N
41°8'N
41°7'N



Red Fire
2,618

Salmon Fire
FOREST

-  Heat Perimeter
-  Intense Heat Areas
-  Scattered Heat Areas
-  Isolated Heat Sources

NAD 1983 UTM Zone 10N

IRIN: Kyle Felker
Map produced:
8/4/2020 0109 hrs



123°29'W 123°28'W 123°27'W 123°26'W 123°25'W 123°24'W 123°23'W