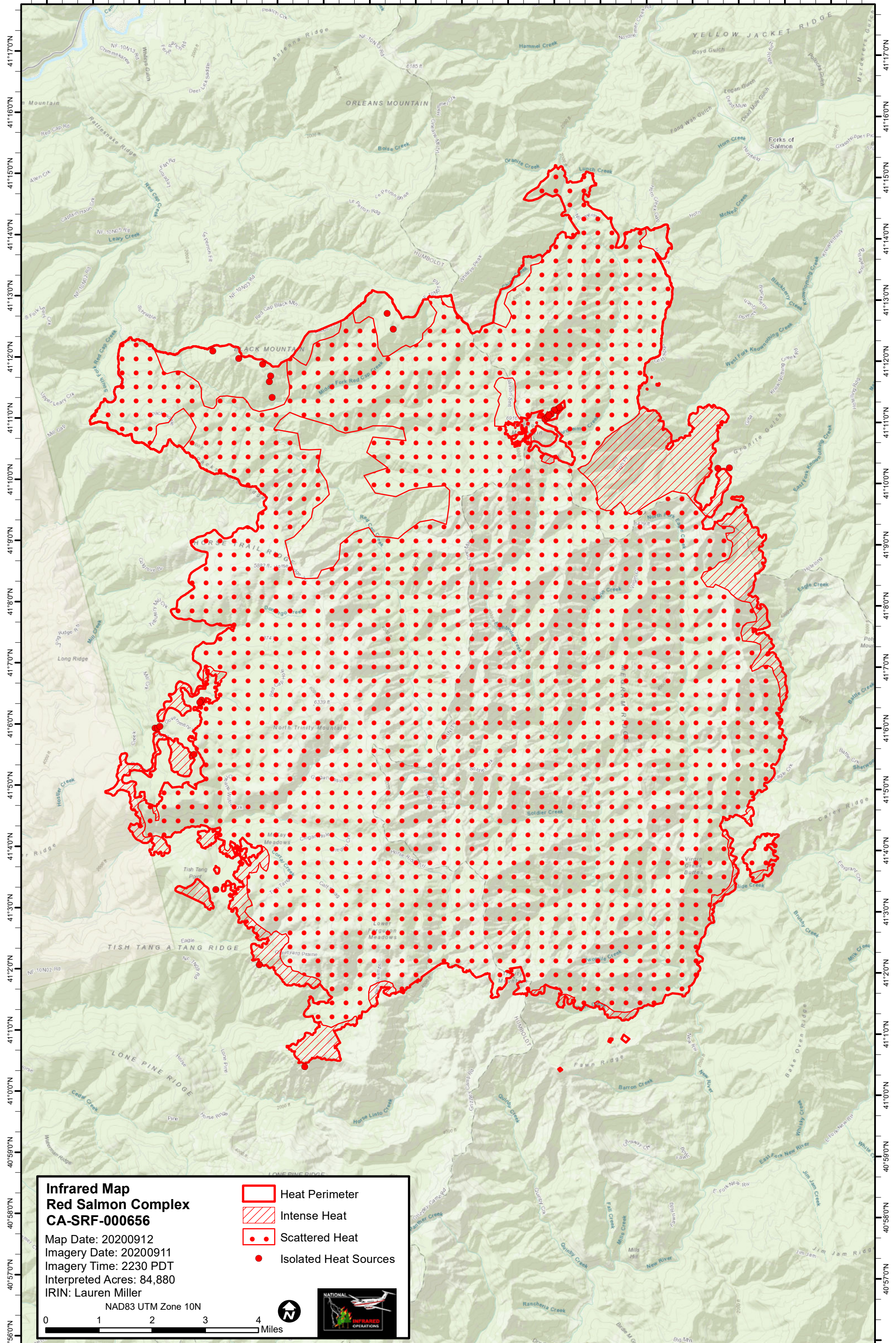


123°35'0"W 123°34'0"W 123°33'0"W 123°32'0"W 123°31'0"W 123°30'0"W 123°29'0"W 123°28'0"W 123°27'0"W 123°26'0"W 123°25'0"W 123°24'0"W 123°23'0"W 123°22'0"W 123°21'0"W 123°20'0"W 123°19'0"W 123°18'0"W



41°17'0"N
41°16'0"N
41°15'0"N
41°14'0"N
41°13'0"N
41°12'0"N
41°11'0"N
41°10'0"N
41°9'0"N
41°8'0"N
41°7'0"N
41°6'0"N
41°5'0"N
41°4'0"N
41°3'0"N
41°2'0"N
41°1'0"N
40°59'0"N
40°58'0"N
40°57'0"N
40°56'0"N

41°17'0"N
41°16'0"N
41°15'0"N
41°14'0"N
41°13'0"N
41°12'0"N
41°11'0"N
41°10'0"N
41°9'0"N
41°8'0"N
41°7'0"N
41°6'0"N
41°5'0"N
41°4'0"N
41°3'0"N
41°2'0"N
41°1'0"N
40°59'0"N
40°58'0"N
40°57'0"N
40°56'0"N

**Infrared Map
Red Salmon Complex
CA-SRF-000656**

Map Date: 20200912
Imagery Date: 20200911
Imagery Time: 2230 PDT
Interpreted Acres: 84,880
IRIN: Lauren Miller

NAD83 UTM Zone 10N

0 1 2 3 4 Miles

Heat Perimeter
 Intense Heat
 Scattered Heat
 Isolated Heat Sources