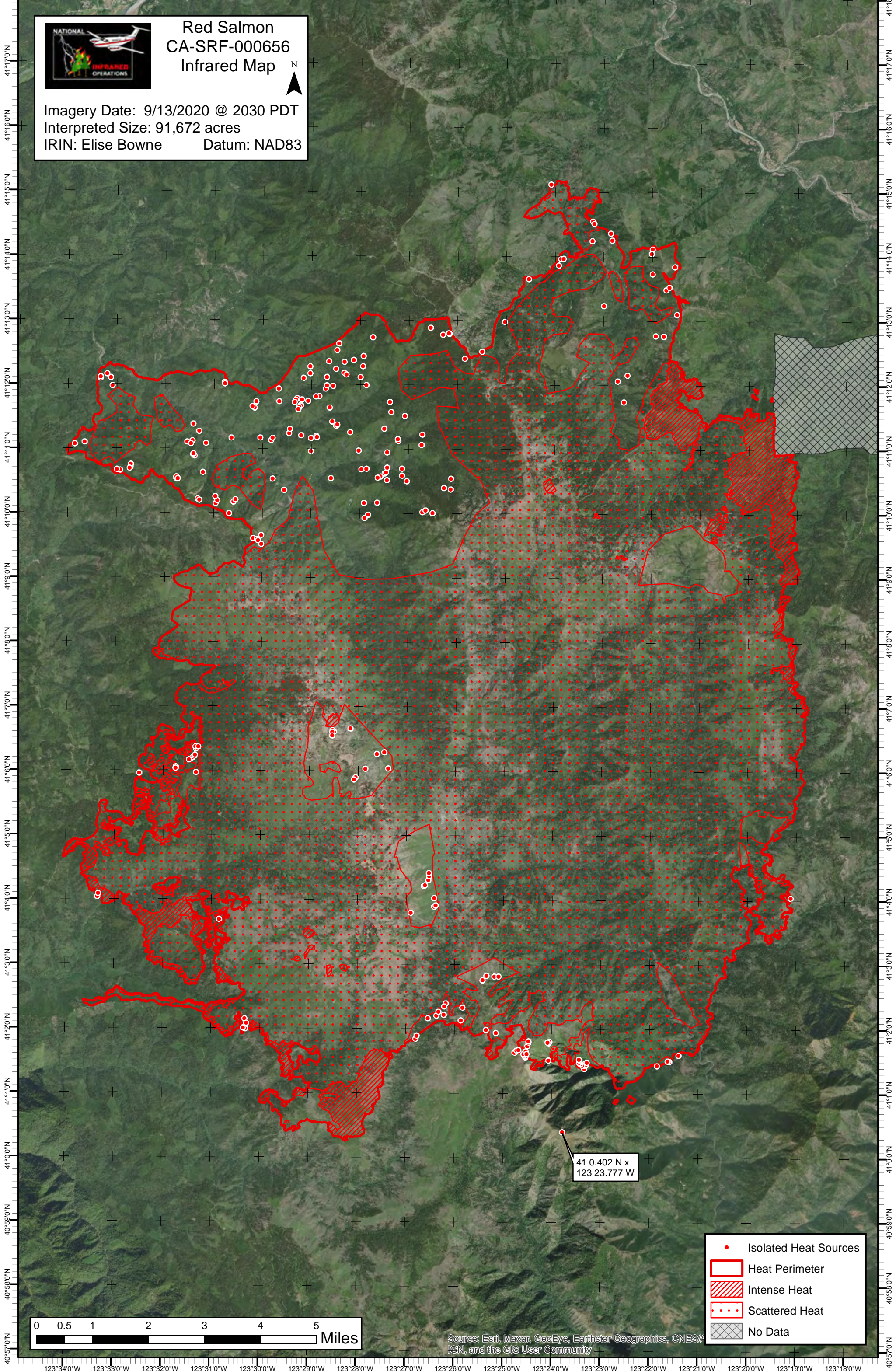


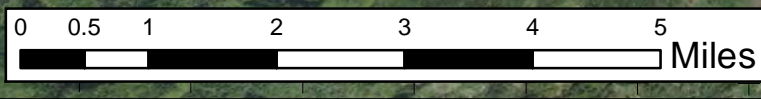
123°35'0"W 123°34'0"W 123°33'0"W 123°32'0"W 123°31'0"W 123°30'0"W 123°29'0"W 123°28'0"W 123°27'0"W 123°26'0"W 123°25'0"W 123°24'0"W 123°23'0"W 123°22'0"W 123°21'0"W 123°20'0"W 123°19'0"W 123°18'0"W



# Red Salmon CA-SRF-000656 Infrared Map



Imagery Date: 9/13/2020 @ 2030 PDT  
Interpreted Size: 91,672 acres  
IRIN: Elise Bowne Datum: NAD83



- Isolated Heat Sources
- Heat Perimeter
- Intense Heat
- Scattered Heat
- No Data

Source: Esri, Maxar, GeoEye, Earthstar Geographics, CNES/Airbus, DigitalGlobe, GeoEye, IGN, and the GIS User Community

40°57'0"N 40°58'0"N 40°59'0"N 41°0'0"N 41°10'0"N 41°20'0"N 41°30'0"N 41°40'0"N 41°50'0"N 41°60'0"N 41°70'0"N 41°80'0"N 41°90'0"N 41°10'0"N 41°11'0"N 41°12'0"N 41°13'0"N 41°14'0"N 41°15'0"N 41°16'0"N 41°17'0"N 41°18'0"N