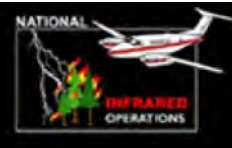
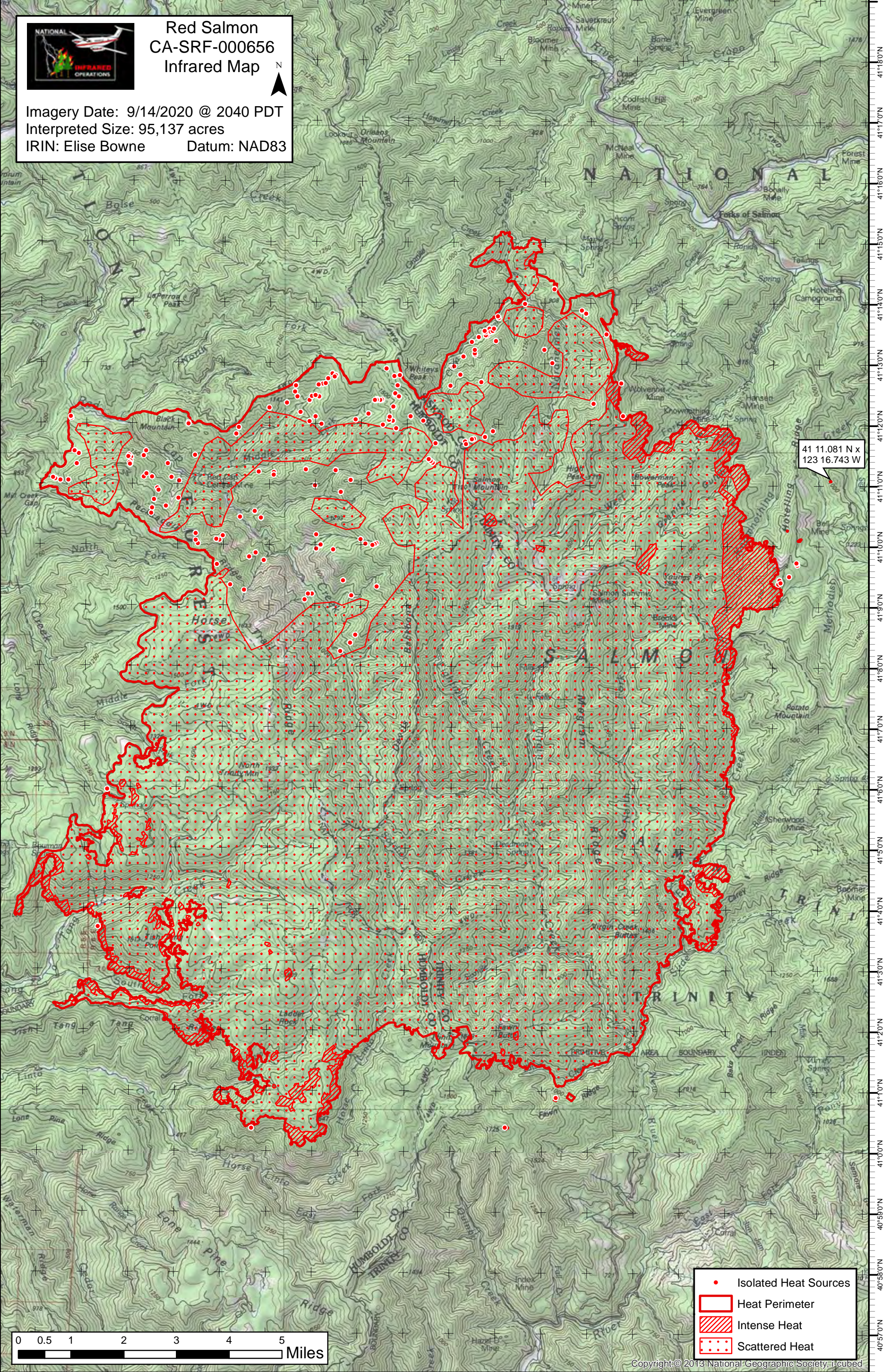


123°34'0"W 123°33'0"W 123°32'0"W 123°31'0"W 123°30'0"W 123°29'0"W 123°28'0"W 123°27'0"W 123°26'0"W 123°25'0"W 123°24'0"W 123°23'0"W 123°22'0"W 123°21'0"W 123°20'0"W 123°19'0"W 123°18'0"W 123°17'0"W 123°16'0"W



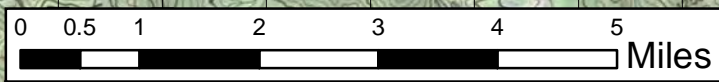
Red Salmon
CA-SRF-000656
Infrared Map

Imagery Date: 9/14/2020 @ 2040 PDT
 Interpreted Size: 95,137 acres
 IRIN: Elise Bowne Datum: NAD83



41 11.081 N x
 123 16.743 W

- Isolated Heat Sources
- Heat Perimeter
- Intense Heat
- Scattered Heat



123°34'0"W 123°33'0"W 123°32'0"W 123°31'0"W 123°30'0"W 123°29'0"W 123°28'0"W 123°27'0"W 123°26'0"W 123°25'0"W 123°24'0"W 123°23'0"W 123°22'0"W 123°21'0"W 123°20'0"W 123°19'0"W 123°18'0"W 123°17'0"W 123°16'0"W