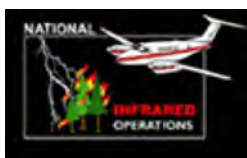


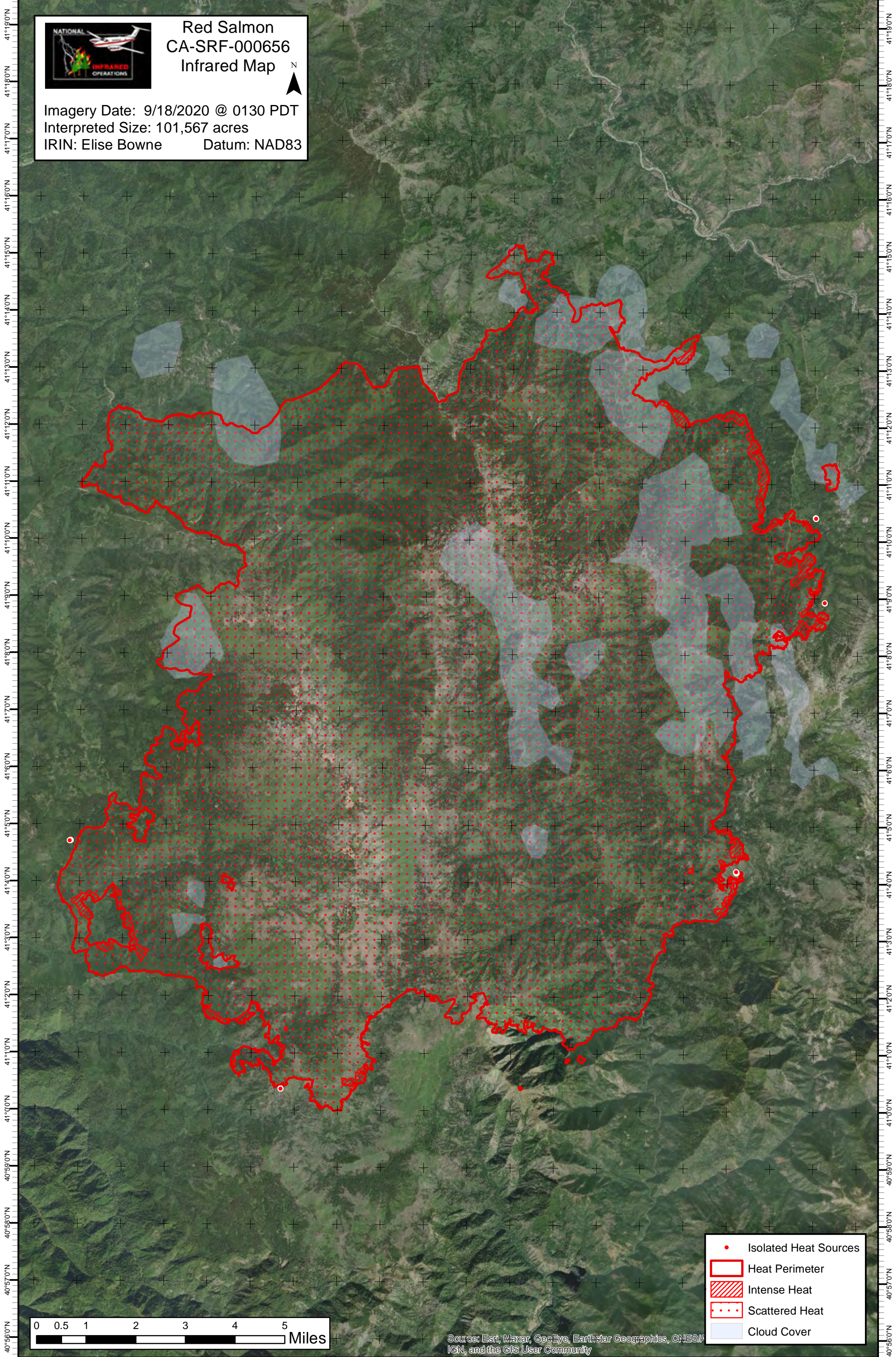
123°35'0"W 123°34'0"W 123°33'0"W 123°32'0"W 123°31'0"W 123°30'0"W 123°29'0"W 123°28'0"W 123°27'0"W 123°26'0"W 123°25'0"W 123°24'0"W 123°23'0"W 123°22'0"W 123°21'0"W 123°20'0"W 123°19'0"W 123°18'0"W 123°17'0"W 123°16'0"W



# Red Salmon CA-SRF-000656 Infrared Map



Imagery Date: 9/18/2020 @ 0130 PDT  
Interpreted Size: 101,567 acres  
IRIN: Elise Bowne Datum: NAD83



- Isolated Heat Sources
- Heat Perimeter
- Intense Heat
- Scattered Heat
- Cloud Cover

0 0.5 1 2 3 4 5 Miles

Source: Esri, Maxar, GeoEye, Earthstar Geographics, CNES/AIGN, and the GIS User Community

123°35'0"W 123°34'0"W 123°33'0"W 123°32'0"W 123°31'0"W 123°30'0"W 123°29'0"W 123°28'0"W 123°27'0"W 123°26'0"W 123°25'0"W 123°24'0"W 123°23'0"W 123°22'0"W 123°21'0"W 123°20'0"W 123°19'0"W 123°18'0"W 123°17'0"W 123°16'0"W