



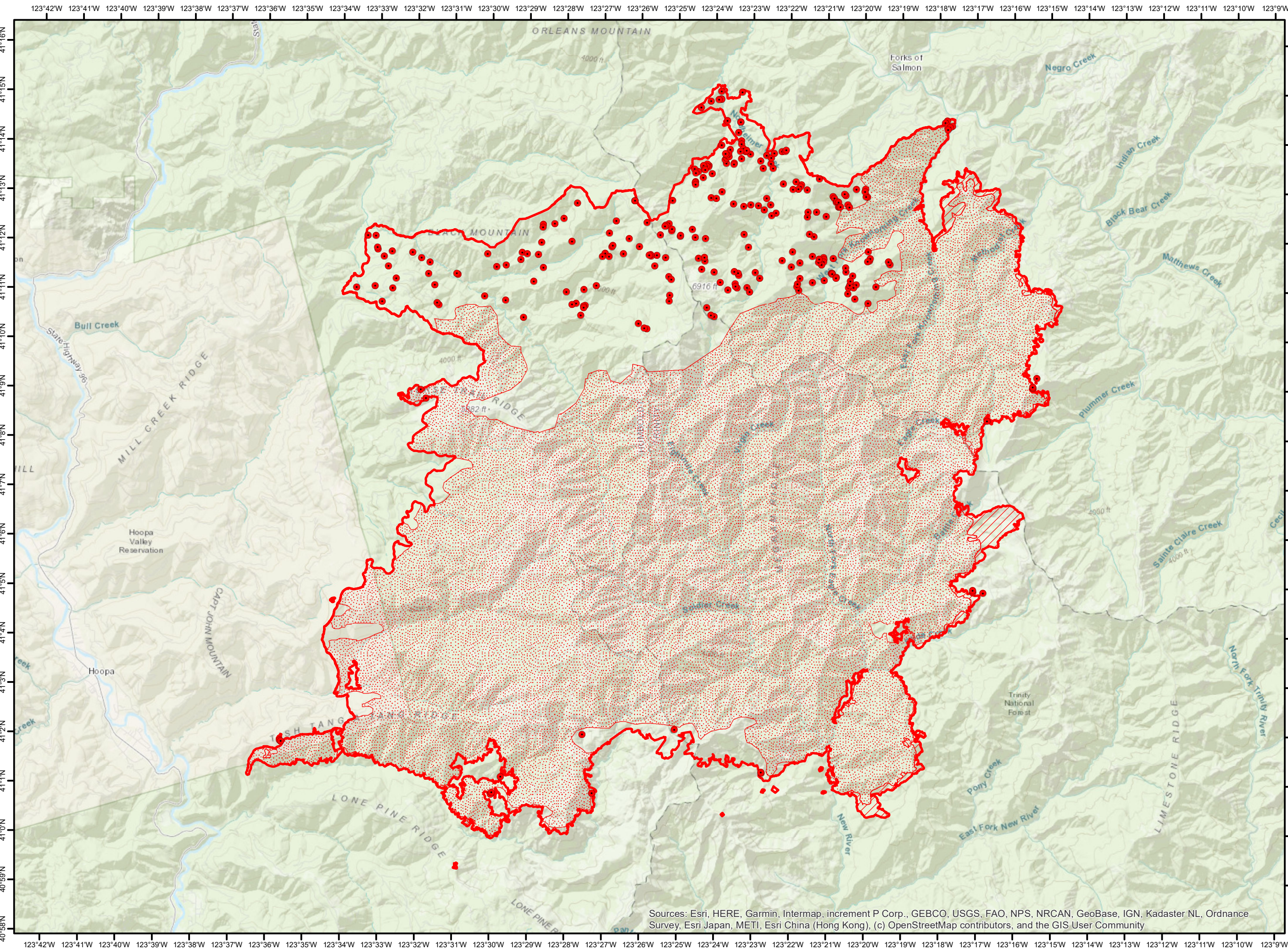
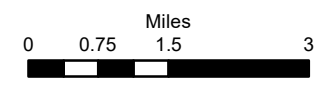
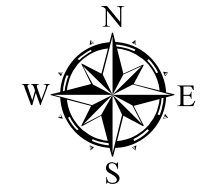


RED SALMON CA-SRF-000656 Infrared Map

1:130,000

-  Heat Perimeter
 -  Intense Heat Areas
 -  Scattered Heat Areas
 -  Isolated Heat Sources
- NAD 1983 UTM Zone 10N



IR Interpreter: Brian Monroe
IR interpreted acres: 122,569
Date: 09/30/2020
Scan Date: 09/29/2020
Scan Time: 1935 hrs PDT

Sources: Esri, HERE, Garmin, Intermap, increment P Corp., GEBCO, USGS, FAO, NPS, NRCAN, GeoBase, IGN, Kadaster NL, Ordnance Survey, Esri Japan, METI, Esri China (Hong Kong), (c) OpenStreetMap contributors, and the GIS User Community